

FOR LEASE

# 6327 THOMPSON ROAD

BAYTOWN, TX 77521



**11.9769 ACRES AVAILABLE**



# PROPERTY HIGHLIGHTS

EXTRA STABILIZED LAND OF 6.5 ACRES -  
FULLY FENCED AND LIGHTED

**2015**  
CONSTRUCTION

**CRANE CAPABLE**  
BUILDING

**10,970 SF**  
OFFICE

**19,700 SF**  
SHOP

**1,800 SF**  
COVERED WASH BAY

**35,030 SF**  
UNDER ROOF

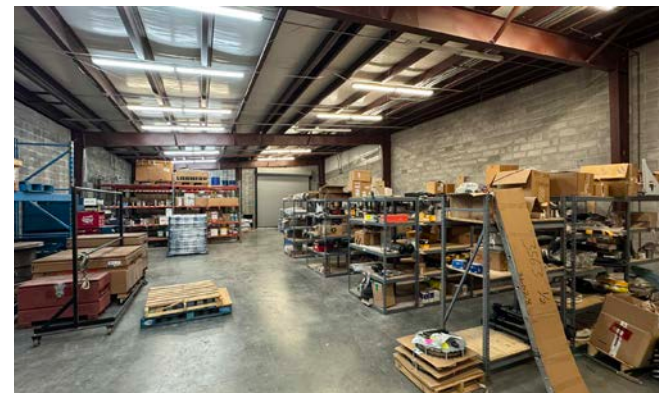
**POWER**  
800 AMP | 3-PHASE  
277/480V

**53'**  
EVE HEIGHT  
WITH PEAK ROOF  
CLEARANCE AT >3'

**12"**  
SLAB

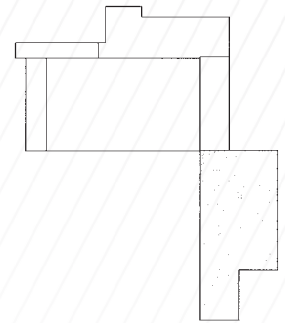
**LED**  
YARD LIGHTING

PIT FOR BELOW ACCESS





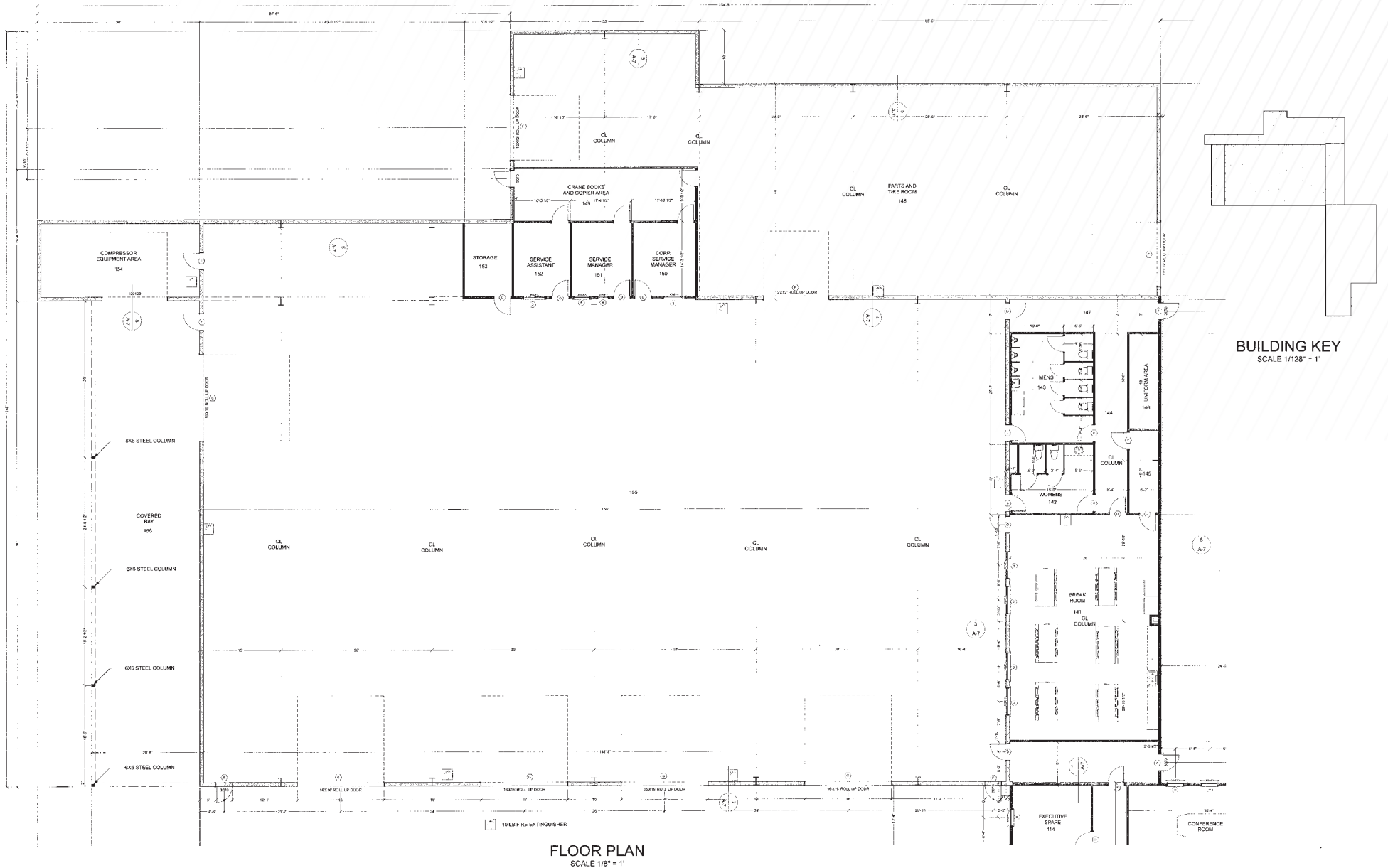
# OFFICE FLOOR PLAN



BUILDING KEY  
SCALE 1/128" = 1'

FLOOR PLAN  
SCALE 1/8" = 1'

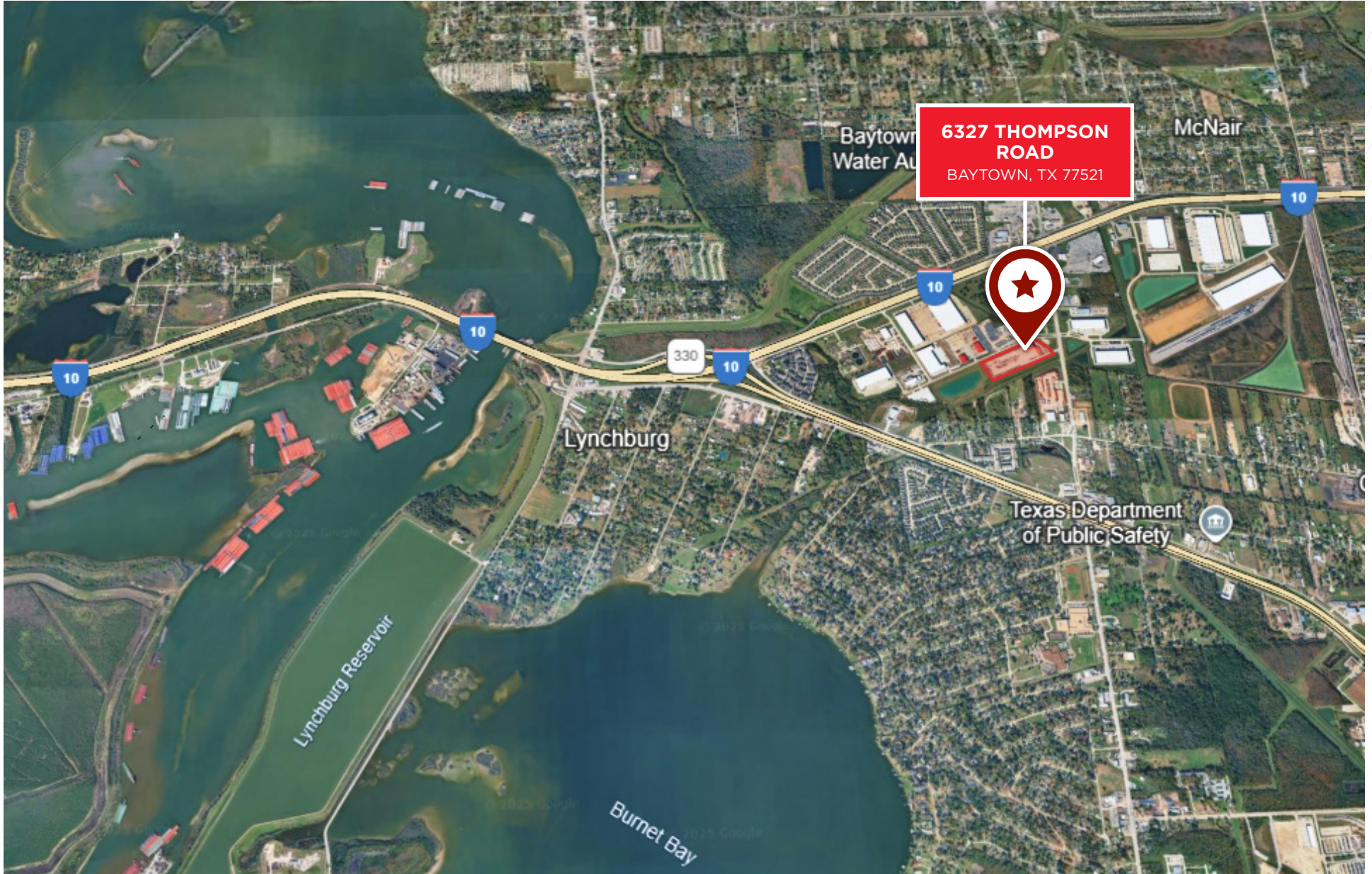
# SHOP & SHOP OFFICE FLOOR PLAN



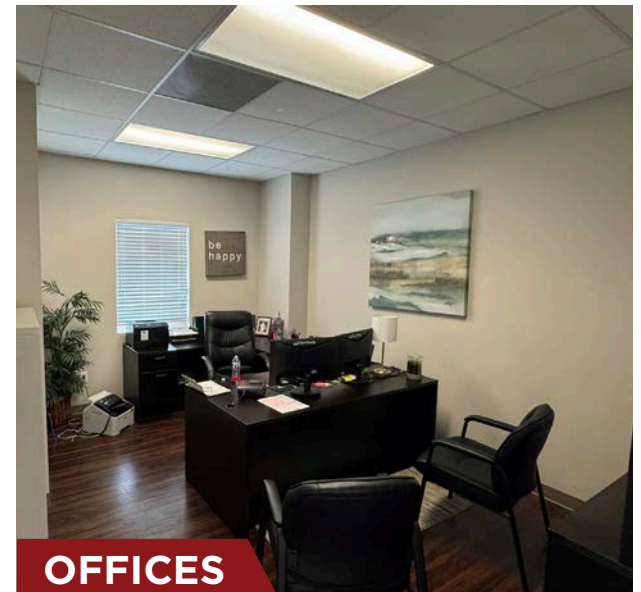
**BUILDING KEY**  
SCALE 1/128" = 1"

**FLOOR PLAN**  
SCALE 1/8" = 1"

# LOCATION MAP



# INTERNAL PHOTOS



**FOR MORE INFORMATION, PLEASE CONTACT:**

**Coe Parker, SIOR**

Senior Director

+1 713 963 2825

[coe.parker@cushwake.com](mailto:coe.parker@cushwake.com)

**B. Kelley Parker, SIOR**

Vice Chair

+1 713 963 2896

[kelley.parker@cushwake.com](mailto:kelley.parker@cushwake.com)



©2025 Cushman & Wakefield. All rights reserved. The information contained in this communication is strictly confidential. This information has been obtained from sources believed to be reliable but has not been verified. NO WARRANTY OR REPRESENTATION, EXPRESS OR IMPLIED, IS MADE AS TO THE CONDITION OF THE PROPERTY (OR PROPERTIES) REFERENCED HEREIN OR AS TO THE ACCURACY OR COMPLETENESS OF THE INFORMATION CONTAINED HEREIN, AND SAME IS SUBMITTED SUBJECT TO ERRORS, OMISSIONS, CHANGE OF PRICE, RENTAL OR OTHER CONDITIONS, WITHDRAWAL WITHOUT NOTICE, AND TO ANY SPECIAL LISTING CONDITIONS IMPOSED BY THE PROPERTY OWNER(S). ANY PROJECTIONS, OPINIONS OR ESTIMATES ARE SUBJECT TO UNCERTAINTY AND DO NOT SIGNIFY CURRENT OR FUTURE PROPERTY PERFORMANCE.

