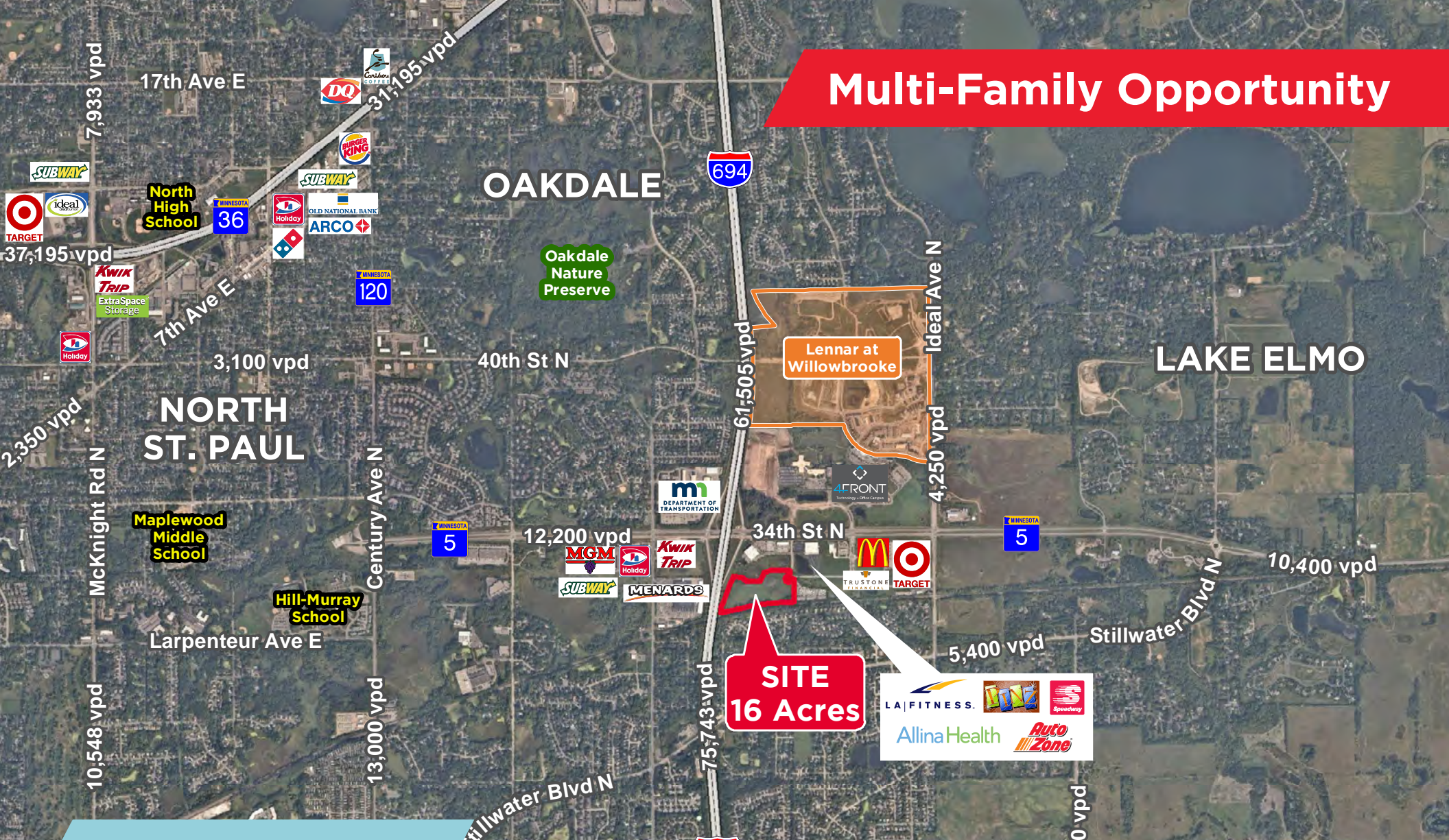


Multi-Family Opportunity



OAKDALE, MN

16 MIXED-USE ACRES

For more information, please contact:

Jon Rausch
Executive Director
+1 952 893 8251
jon.rausch@cushwake.com

Luke Appert
Executive Director
+1 952 893 8238
luke.appert@cushwake.com

Ben Drew
Senior Associate
+1 952 837 8553
ben.drew@cushwake.com



OAKDALE, MN

16 ACRES

Property Information

The subject property falls within the heart of Oakdale’s primary mixed-use district. Located in the Southeast quadrant of I-694 & Hwy 5 provides for ultimate visibility and access. The property contains 16 acres and can be divisible to fit user/developer requirements.

The mixed-use land designation allows for a wide variety of uses. The flexibility will ultimately allow the City to work with developers to form a Planned Unit Development (PUD), where commercial, residential, and office uses are allowed. City sewer and water are readily available making the site immediately available for development.

Parcel Size	16.01 acres
PID #	17.029.21.34.0040 17.029.21.34.0041
Total Tax	\$73,622



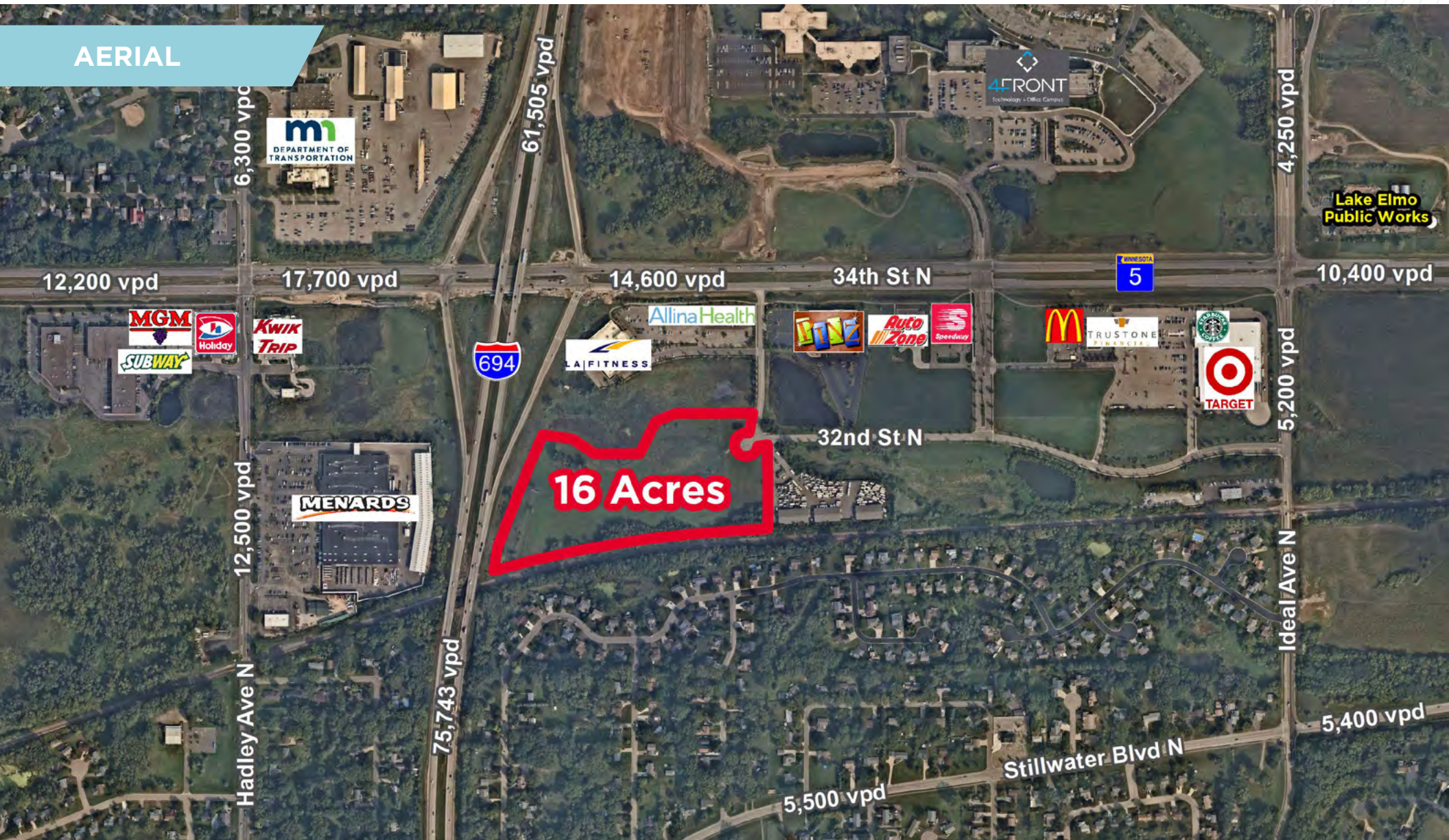
Demographics (2023)

	1 Mile	3 Miles	5 Miles
Population	6,188	62,377	185,352
Households	2,292	23,736	68,996
Average HH Income	\$106,454	\$106,104	\$107,432
Daytime Population	1,592	29,092	82,174

OAKDALE, MN

16 ACRES

AERIAL



OAKDALE, MN

16 ACRES



OAKDALE, MN

16 ACRES

AERIAL

SHOREVIEW

VADNAIS HEIGHTS

WHITE BEAR LAKE

GRANT

ROSEVILLE

LITTLE CANADA

MAHTOMEDI

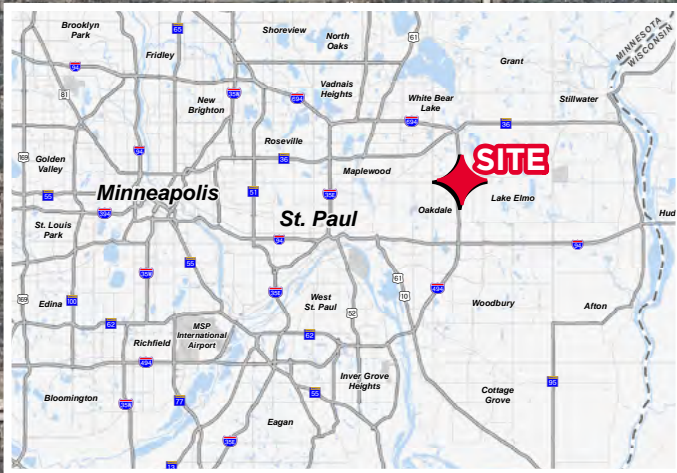
NORTH ST. PAUL

MAPLEWOOD

SITE

LAKE ELMO

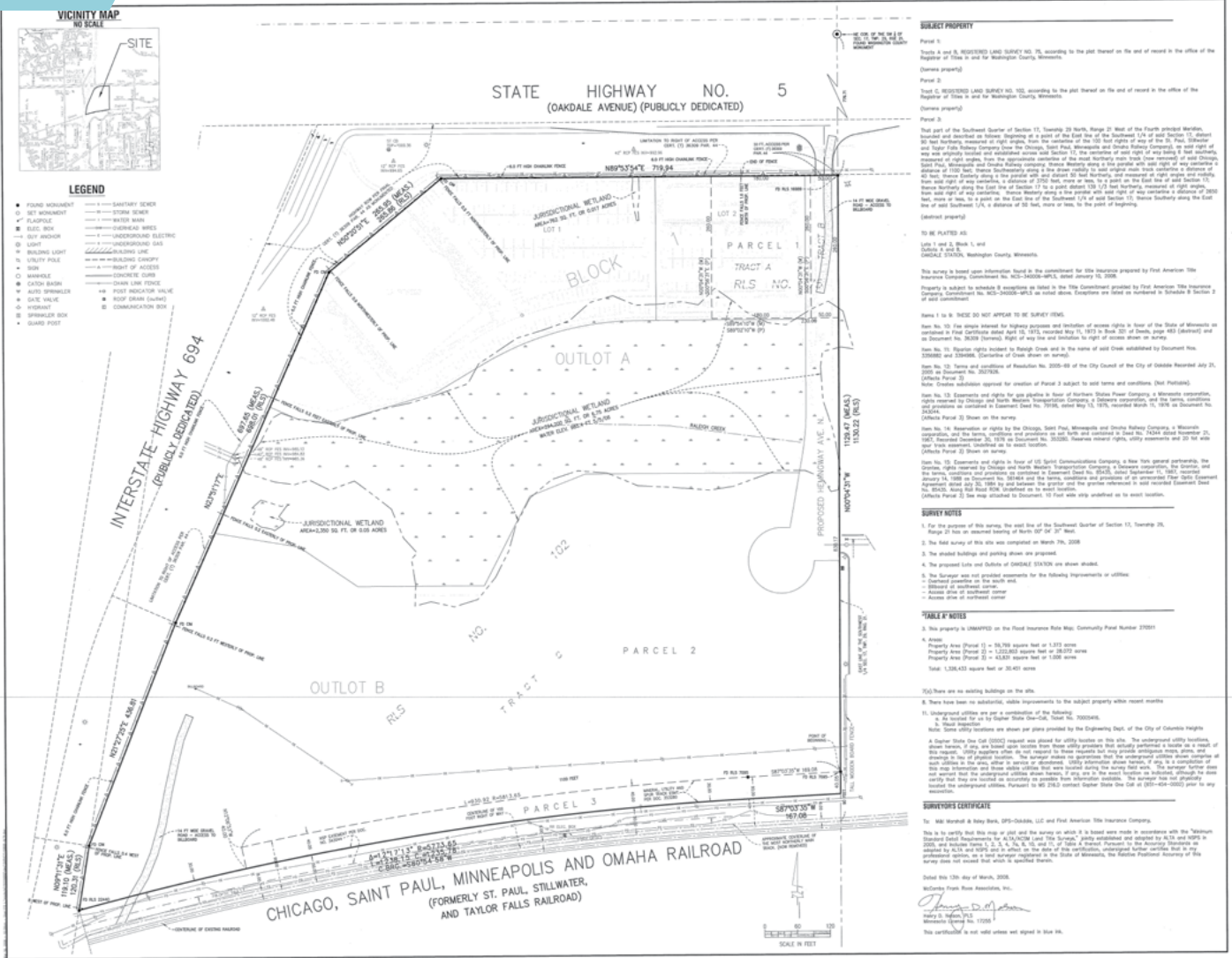
OAKDALE



OAKDALE, MN

16 ACRES

SURVEY



Engineering - Planning - Surveying

MFRA

McCombs Frank Ross
Associates, Inc.
1400 Hennepin Avenue
Room 12200
Atlanta, Georgia 30309
Phone 404.525.0000
Fax 404.525.0001
www.mcfra.com

Client
Dale Properties

Months Months

Project
Oakdale Station

Location
Oakdale, MN

Certification

Summary
Designed: []
Reviewed: []
Checked: []
Field Book: 1317/08

Revision History
No. Date By Description

Sheet Title
**ALTA/ACSM Land
Title Survey**

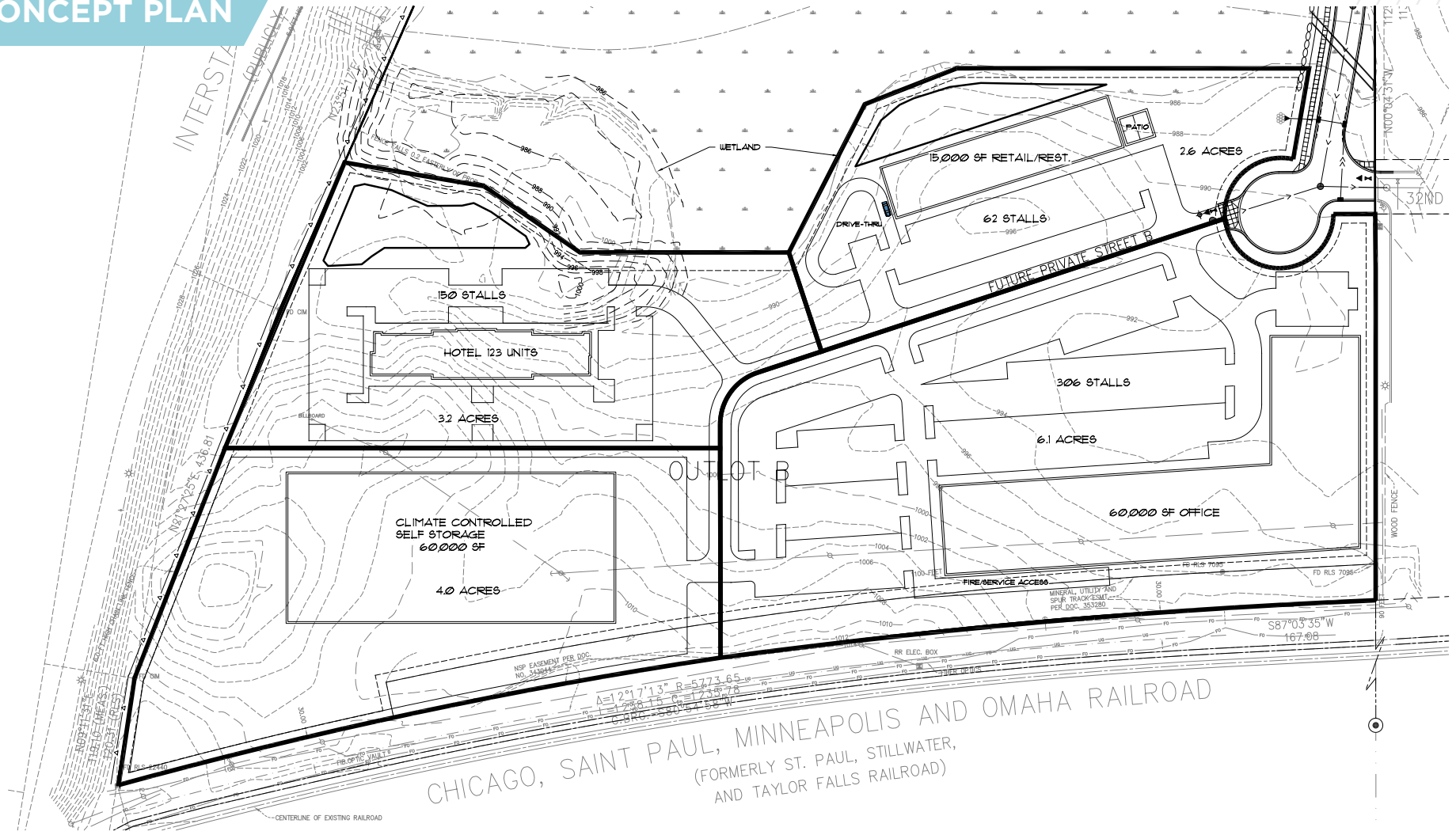
Sheet Number/Revision
1

Project No. 15808

OAKDALE, MN

16 ACRES

CONCEPT PLAN



[CLICK ON PLAN FOR PRINTABLE IMAGE](#)

OAKDALE, MN

16 ACRES

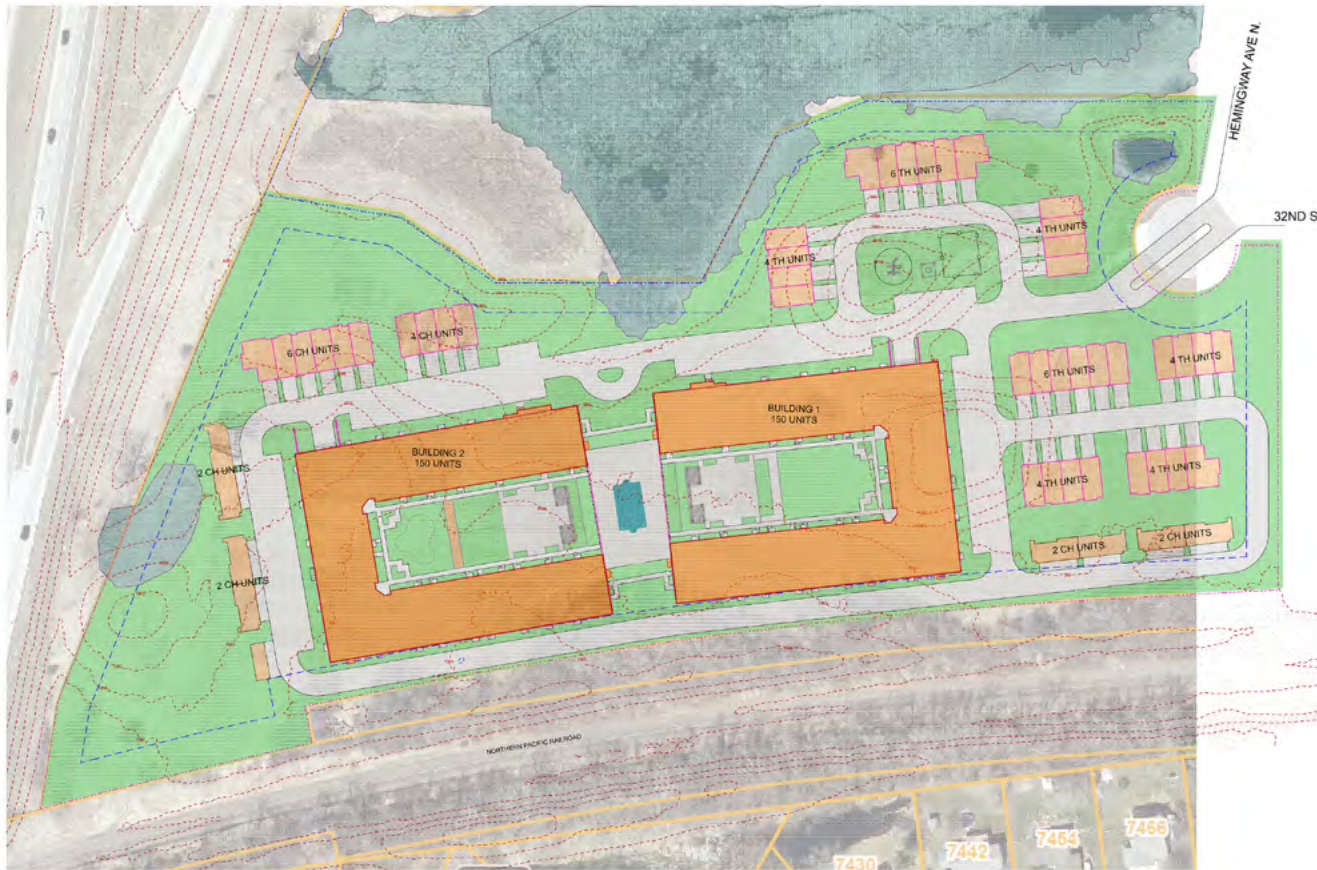
SITE PLAN

BUILDING 1
1 BEDROOMS: 79
2 BEDROOMS: 60
3 BEDROOMS: 11
TOTAL: 150

BUILDING 2
1 BEDROOMS: 73
2 BEDROOMS: 66
3 BEDROOMS: 11
TOTAL: 150

TOWNHOMES & CARRIAGE HOMES
2 BEDROOM TH: 18
3 BEDROOM TH: 24
2 BEDROOM CH: 8
TOTAL: 50

TOTAL UNITS: 350



1 ARCHITECTURAL SITE PLAN

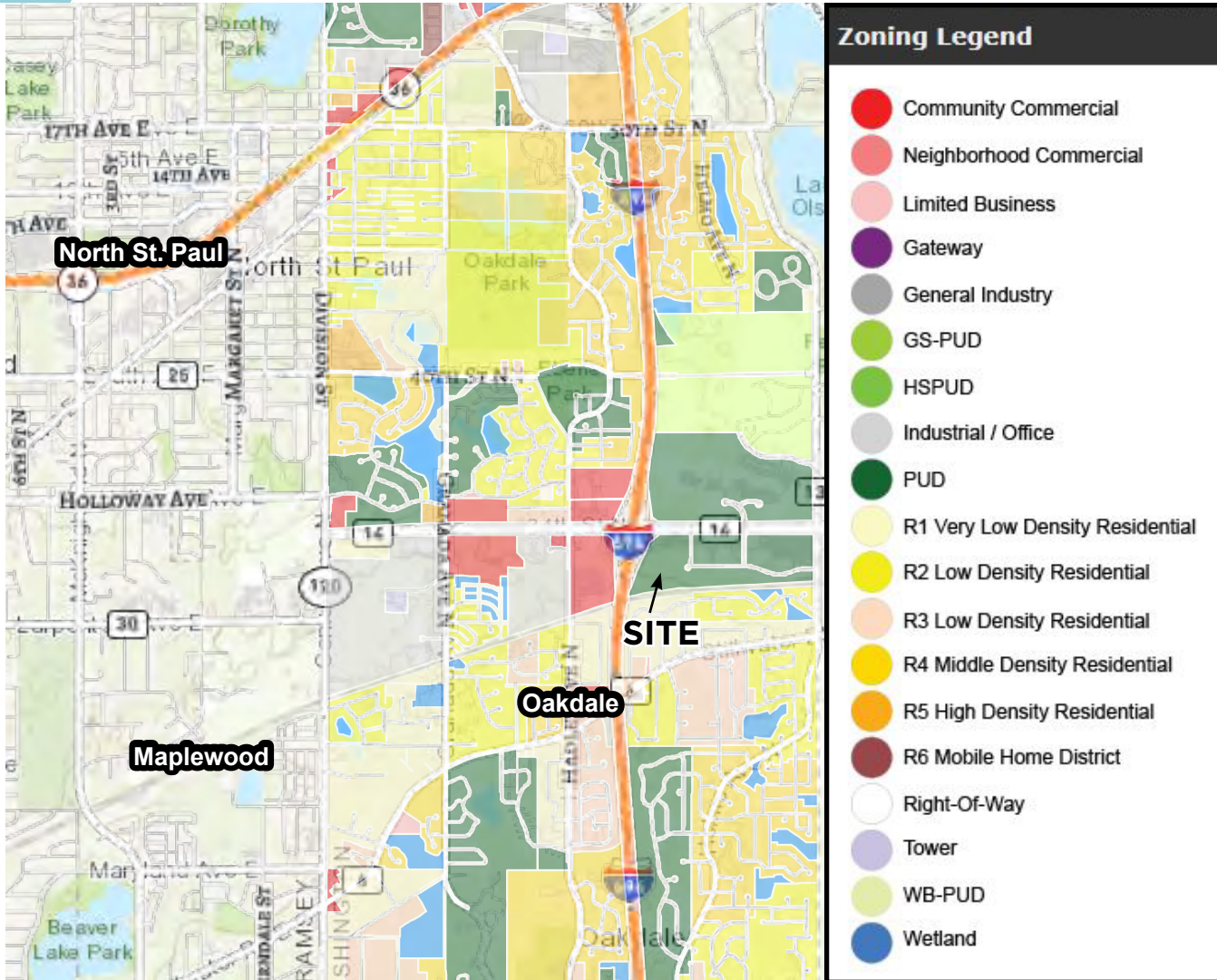


[CLICK ON PLAN FOR PRINTABLE IMAGE](#)

OAKDALE, MN

16 ACRES

ZONING MAP





SITE

ST. PAUL

FOR MORE INFORMATION, CONTACT:

Jon Rausch
Executive Director
+1 952 893 8251
jon.rausch@cushwake.com
visit us at: landmnwi.com

Luke Appert
Executive Director
+1 952 893 8238
luke.appert@cushwake.com

Ben Drew
Senior Associate
+1 952 837 8553
ben.drew@cushwake.com

©2023 Cushman & Wakefield. All rights reserved. The material in this presentation has been prepared solely for information purposes, and is strictly confidential. Any disclosure, use, copying or circulation of this presentation (or the information contained within it) is strictly prohibited, unless you have obtained Cushman & Wakefield's prior written consent. The views expressed in this presentation are the views of the author and do not necessarily reflect the views of Cushman & Wakefield. Neither this presentation nor any part of it shall form the basis of, or be relied upon in connection with any offer, or act as an inducement to enter into any contract or commitment whatsoever. NO REPRESENTATION OR WARRANTY IS GIVEN, EXPRESS OR IMPLIED, AS TO THE ACCURACY OF THE INFORMATION CONTAINED WITHIN THIS PRESENTATION, AND CUSHMAN & WAKEFIELD IS UNDER NO OBLIGATION TO SUBSEQUENTLY CORRECT IT IN THE EVENT OF ERRORS.

