

# Main Street Station

1215 Main Street, Philomath, OR 97370

For Lease



## Property Overview

A hard to find small office located in downtown Philomath. The 520 SF suite 100 offers two private offices with outside windows, a large reception room that can accommodate two work stations, and a file/storage room. An additional 260 SF storage/small vehicle storage space (no automotive repairs) can also be added. Onsite plus street parking.

## Property Details

- |                              |                 |
|------------------------------|-----------------|
| • Total Size:                | 520 SF          |
| • Divisible To:              | NA              |
| • Location:                  | 1st Floor       |
| • Private Offices:           | 2               |
| • Per Month/SF:              | \$2.00          |
| • Additional 260 SF Storage: | Available       |
| • Storage-Per Month/SF:      | \$1.25          |
| • Type of Lease:             | Full Service    |
| • Monument Sign:             | Yes             |
| • Parking:                   | Onsite + Street |

## Contact Information:

David Suprono, CCIM  
davidsuprono@ccim.net  
www.cbcworldwide.com

Office: (541) 757-0222  
Mobile: (541) 760-5096  
Toll Free Fax: (877) 335-6199



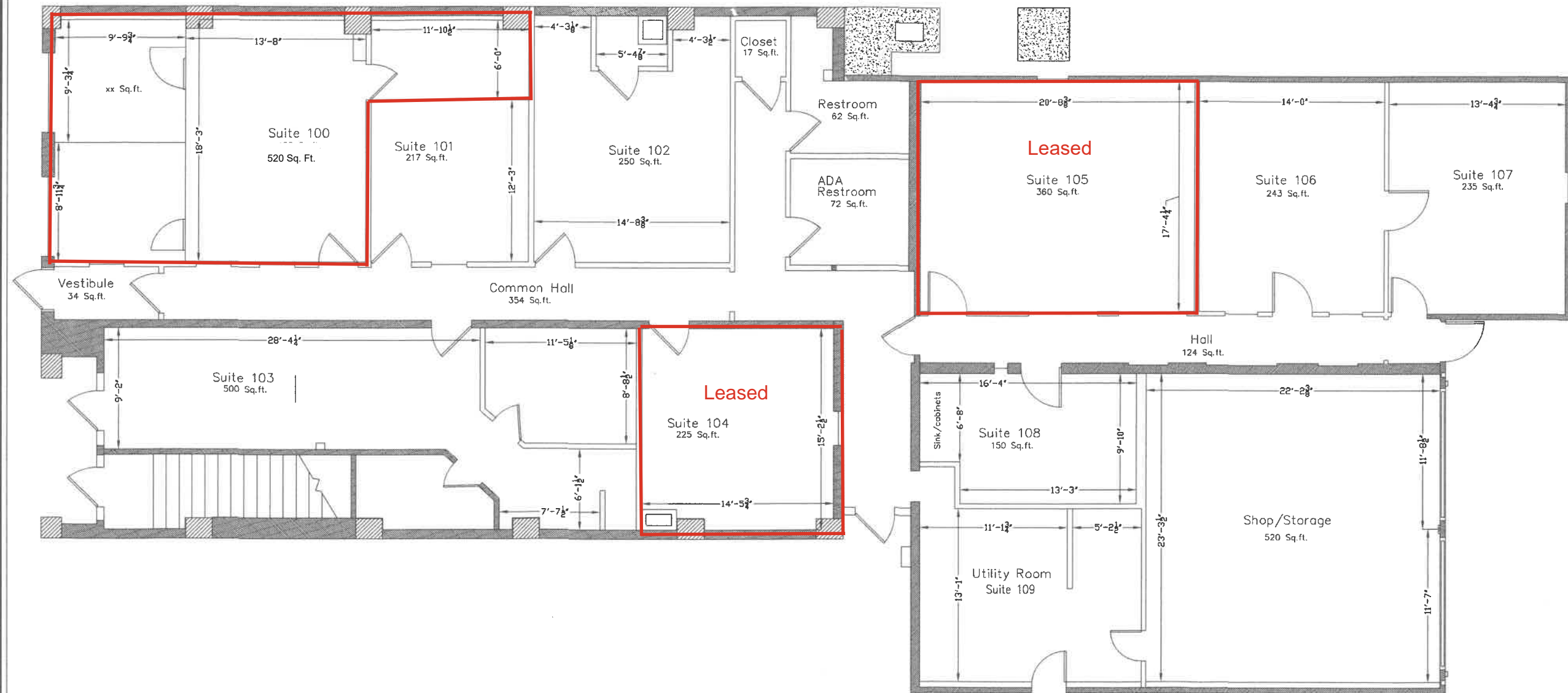
VALLEY BROKERS

Coldwell Banker Commercial Valley Brokers

1109 N.W. 9th Street, Corvallis, OR 97330

Coldwell Banker Commercial and the Coldwell Banker Commercial Logo are registered service marks licensed to Coldwell Banker Commercial Affiliates. Each Office is Independently Owned and Operated.

(541) 757-0222



Scale: 1/4" = 1'

SHEET

# MAIN STREET STATION First Floor Areas

**JOHN D. MCGEE, P.E.**  
JDMcGee, Inc.  
PO BOX 1472  
PHILOMATH, OREGON 97370  
TEL: 541-929-4226 FAX: 541-929-4227  
E-MAIL: jmcgee@jdmcgee.net

BY	DATE	PROJECT #
Designed		
Drawn		
Checked		
Rev.		
JDM	1/9/2023	ADDED COMMON AREA LABELS AND AREAS