



FOR LEASE

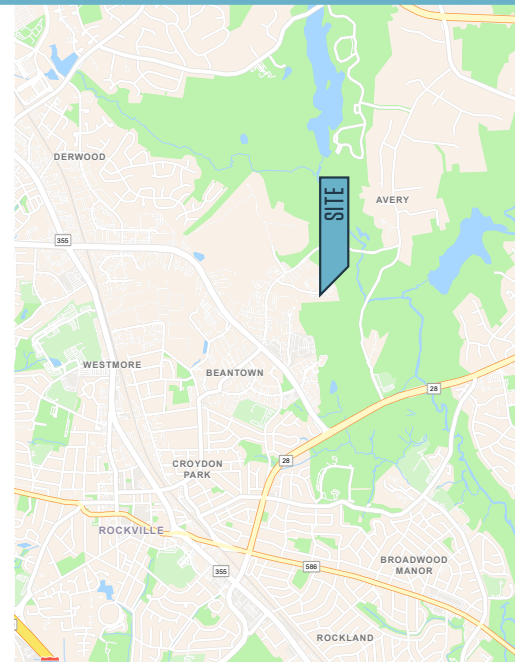
PROPERTY HIGHLIGHTS:

Features

- Clear Height: 22'
- Parking Spaces: 53

Warehouse Facility Facts

- Building Size: 48,300 SF
- Lot Size: 4.34 AC
- Year Built: 2001
- Construction: Masonry
- Water: City Water
- Sewer: City Sewer
- Heating: Gas
- Power Supply: Amps: 200
- Zoning: I-4 (Light Industrial)



Kenneth Fellows
kfellows@klnb.com
301-222-0210

Robert Pugh
rpugh@klnb.com
301-222-0211

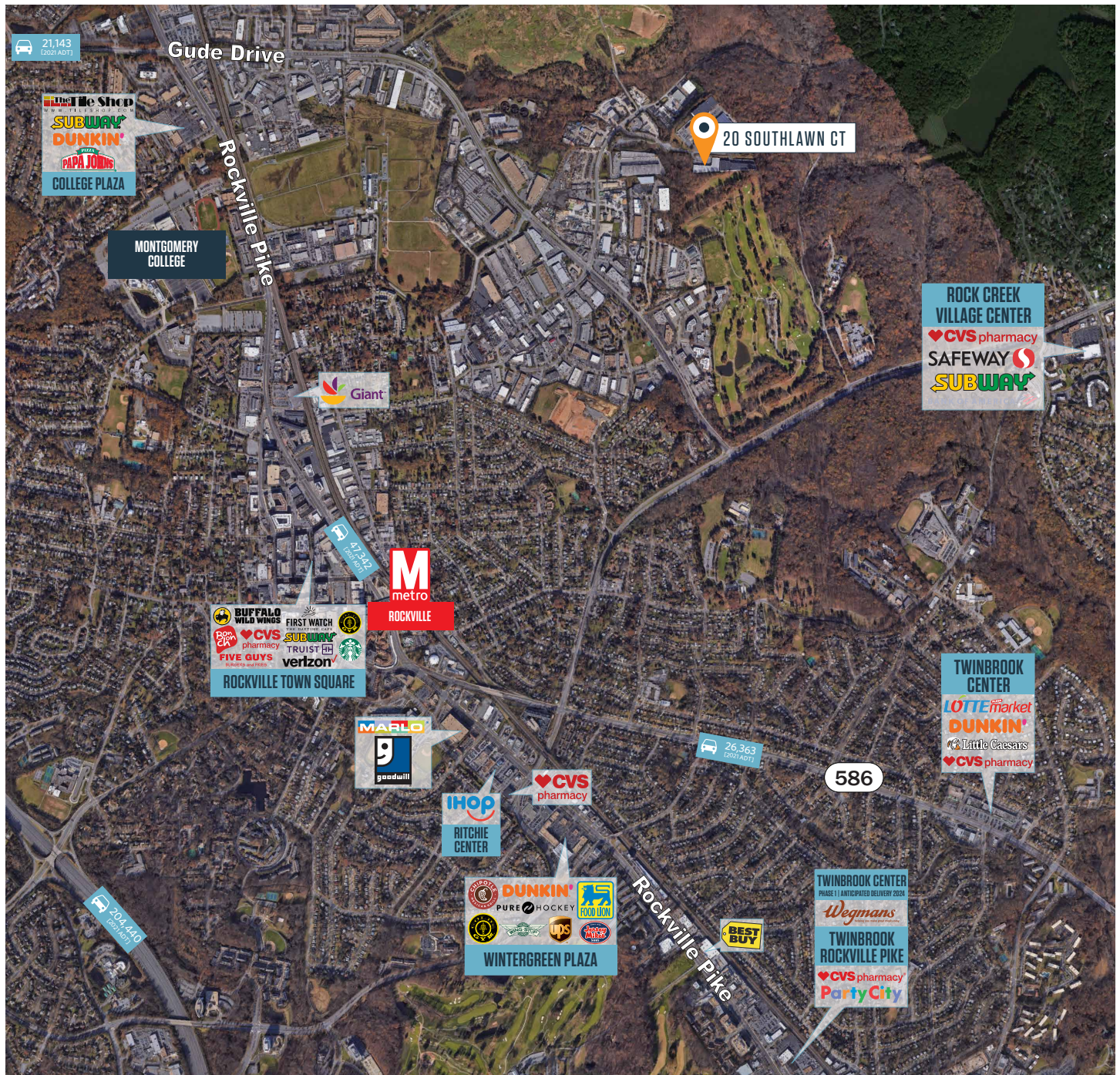
Keiry Martinez
kmartinez@klnb.com
703-334-5629

2273 Research Blvd, Suite 150
Rockville, MD 20850
klnb.com

20 SOUTHLAWN CT

Rockville, MD 20850 | Montgomery County

MARKET AERIAL

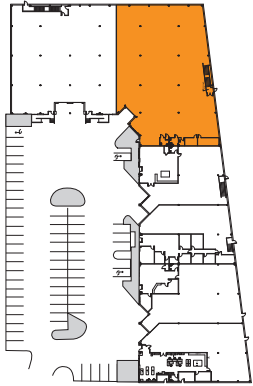


Kenneth Fellows
kfellows@klnb.com
301-222-0210

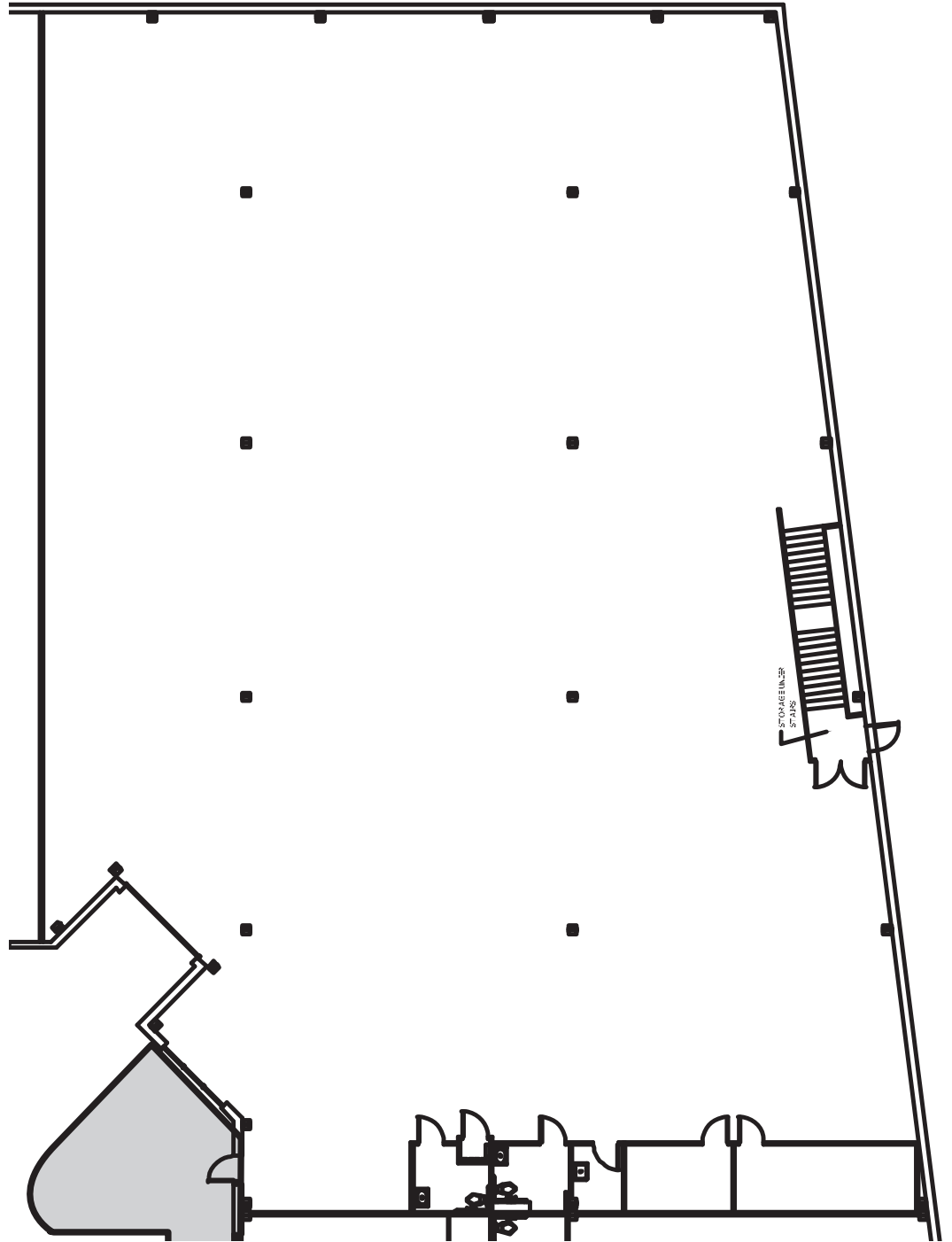
Robert Pugh
rpugh@klnb.com
301-222-0211

Keiry Martinez
kmartinez@klnb.com
703-334-5629

FLOOR PLAN



SUITE E
13,446 SF



20 SOUTHLAWN CT

Rockville, MD 20850 | Montgomery County

[CLICK TO VIEW PROPERTY WEBSITE](#)

For More Information, Please Contact:

Kenneth Fellows

kfellows@klnb.com

301-222-0210

Robert Pugh

rpugh@klnb.com

301-222-0211

Keiry Martinez

kmartinez@klnb.com

703-334-5629

2273 Research Blvd, Suite 150
Rockville, MD 20850

klnb.com

 facebook.com/KLNBCRE

 [@KLNBCRE](https://twitter.com/KLNBCRE)

 linkedin.com/company/klnb

 instagram.com/klnbcre

While we have no reason to doubt the accuracy of any of the information supplied, we cannot, and do not, guarantee its accuracy. All information should be independently verified prior to a purchase or lease of the property. We are not responsible for errors, omissions, misuse, or misinterpretation of information contained herein and make no warranty of any kind, express or implied, with respect to the property or any other matters.

klnb

MP
MARCUS PARTNERS