

FOR LEASE > LOFT STYLE OFFICE SPACE

# The Northern Light Tower



1010 WESTERN AVENUE, PITTSBURGH, PA 15233



Five FREE parking spaces per 1,000 RSF  
First 18 months of lease if signed by October 31, 2019



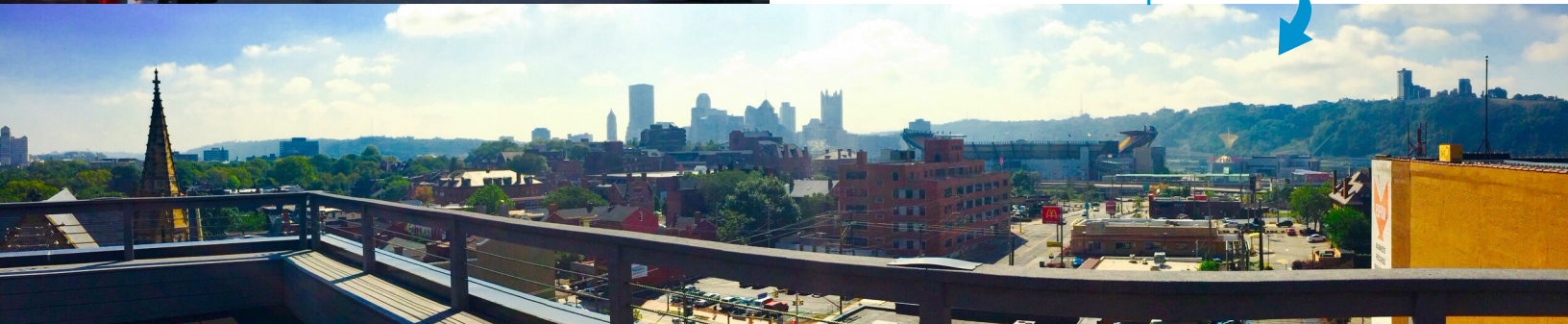
## Property Highlights

- > 3rd Floor | 3,875 RSF
- > 4th Floor | 5,700 RSF
  - can be combined for 9,575 RSF contiguous
- > 6th Floor | 2,100 RSF
- > Exterior signage opportunity
- > Significant natural light
- > Dramatic exposed brick walls, ceilings and HVAC
- > High tech security system
- > Rooftop deck with wifi, golf range and fully equipped multimedia conference center available to all tenants
- > Spectacular glass walled elevator with city view
- > Abundant surface parking and indoor heated garage

## Amenities

- > Easy access to Downtown, West End Bridge, I-376, I-279, Route 65 and Route 19
- > 1/4 mile to Heinz Field & 2 miles to PNC Park
- > Many restaurants within close proximity

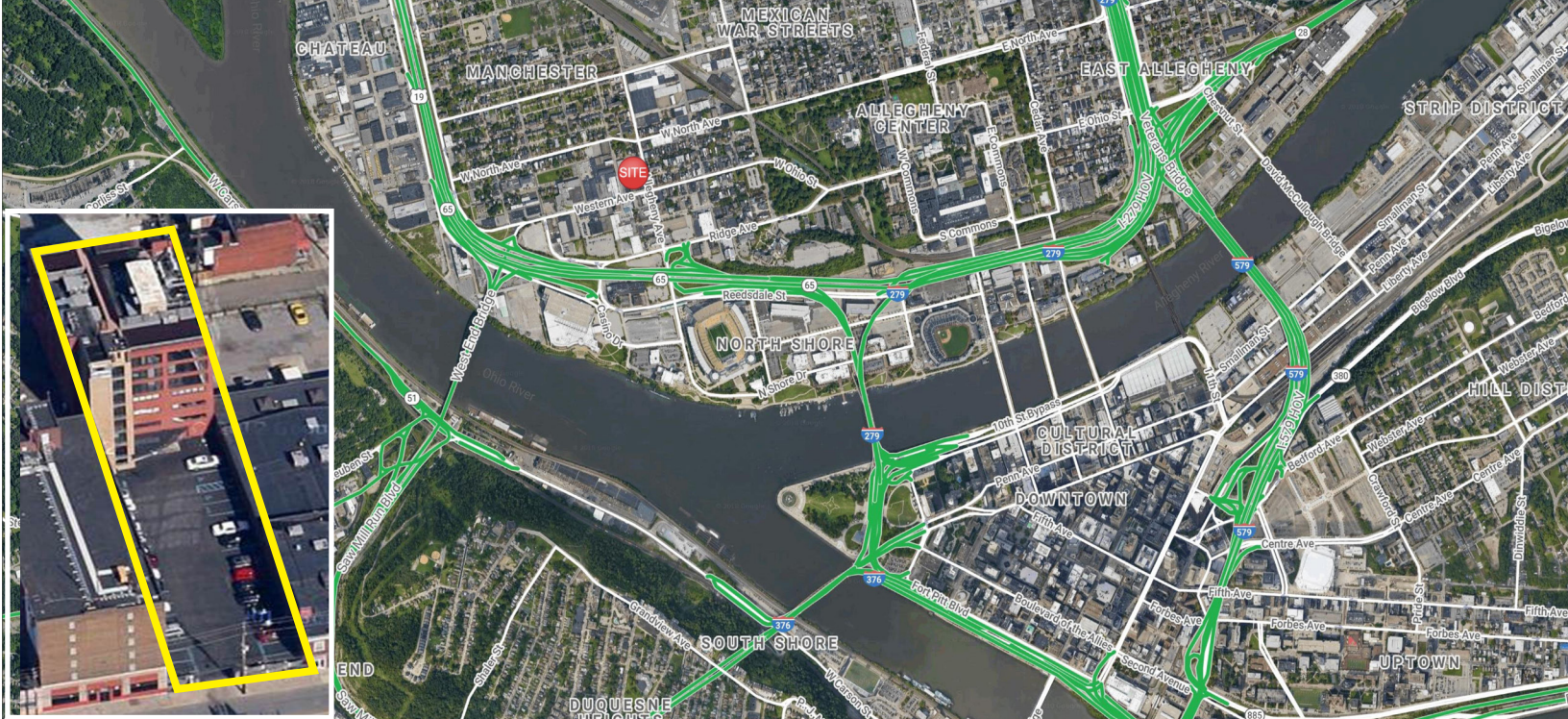
## View from rooftop deck



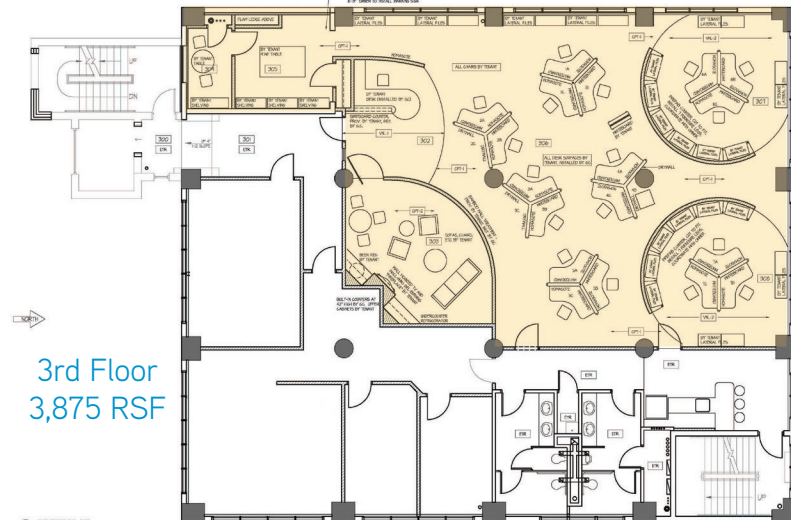
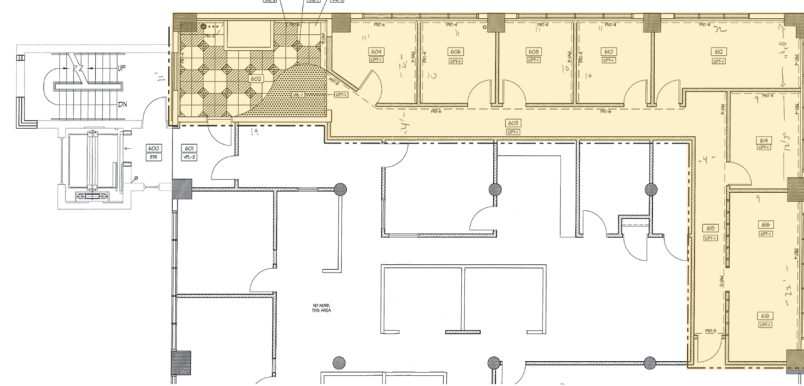
PAUL HORAN  
PRINCIPAL | PITTSBURGH  
OFFICE BROKERAGE  
DIR 412 515 8525  
paul.horan@colliers.com

EDWARD LAWRENCE  
PRINCIPAL | PITTSBURGH  
OFFICE BROKERAGE  
DIR 412 515 8526  
ed.lawrence@colliers.com

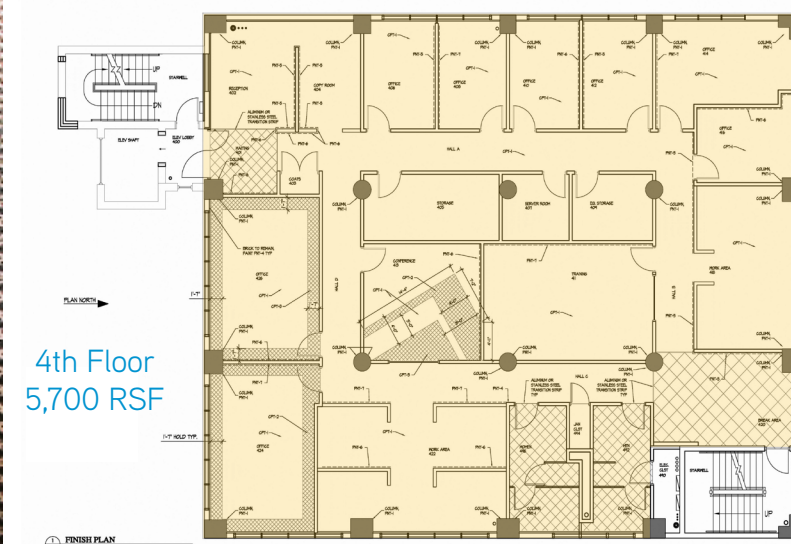
COLLIERS INTERNATIONAL | PITTSBURGH  
Two Gateway Center  
603 Stanwix Street, Suite 125  
Pittsburgh, PA 15222  
www.colliers.com/pittsburgh



6th Floor  
2,100 RSF



3rd Floor  
3,875 RSF



4th Floor  
5,700 RSF

The information contained herein has been given to us by the owner of the property or other sources we deem reliable. We have no reason to doubt its accuracy, but we do not guarantee it. All information should be verified prior to purchase or lease.

