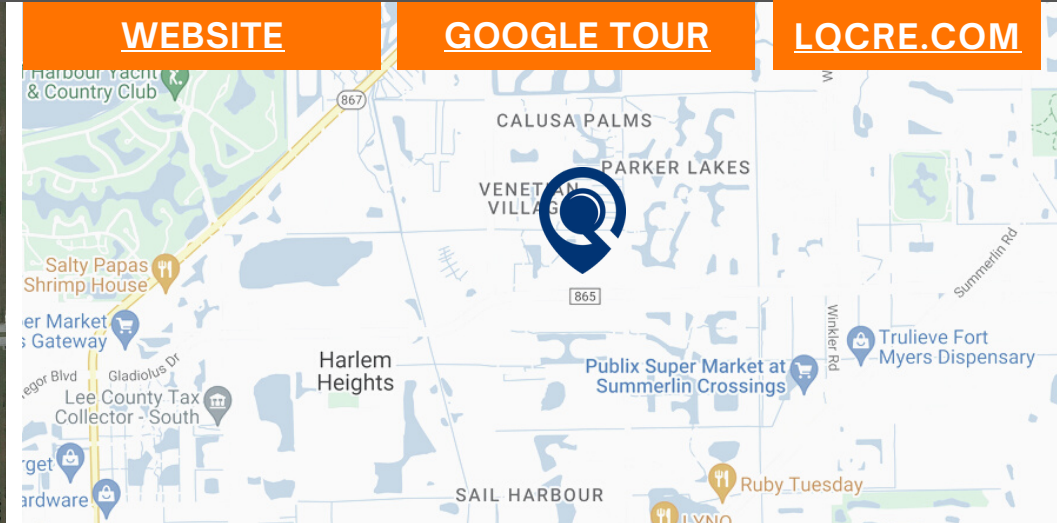
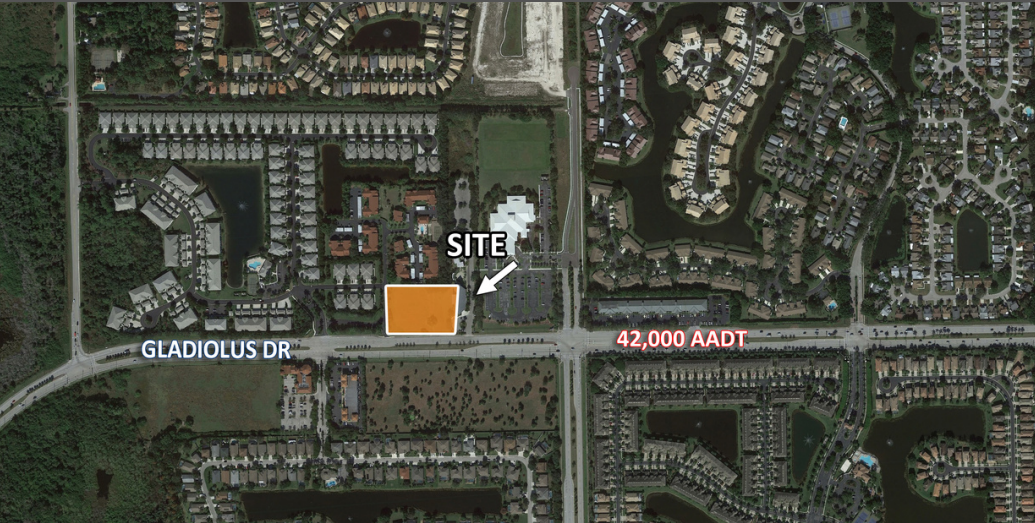


# COMMERCIAL LAND - GLADIOLUS DRIVE

9680 Gladiolus Drive | Fort Myers, FL 33908

Commercial Land for Sale



[WEBSITE](#)

[GOOGLE TOUR](#)

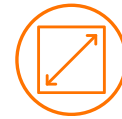
[LQCRE.COM](#)



**\$900,000**  
PRICE



**1.79**  
AC



**CS-1**  
Zoning



**\$11.54**  
PSF

- This 1.79 Acre lot is located in the North side of Gladiolus Drive, half a mile North of Healthpark Medical Center.
- Healthpark is a 461 bed hospital specializing in cardiac and obstetric care, and also has the Golisano Children's Hospital(135 beds), the only children's hospital in the SWFL region.
- This site is zoned CS-1 for a variety of office uses and interior storage.
- Great site at a good price.



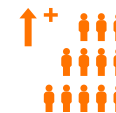
5-MILE POPULATION

**126,682**



5-MILE INCOME

**\$93,607**



5-YEAR INCREASE

**0.5%**



5-MILE EMPLOYEES

**67,101**



1614 Colonial Blvd #101  
Fort Myers, FL 33907

[LQCRE.COM](#)

Mike Doyle, CCIM  
Senior Associate  
D: 239-275-4922  
C: 239-851-3164  
[mdoyle@lqcre.com](mailto:mdoyle@lqcre.com)

# COMMERCIAL LAND - GLADIOLUS DRIVE

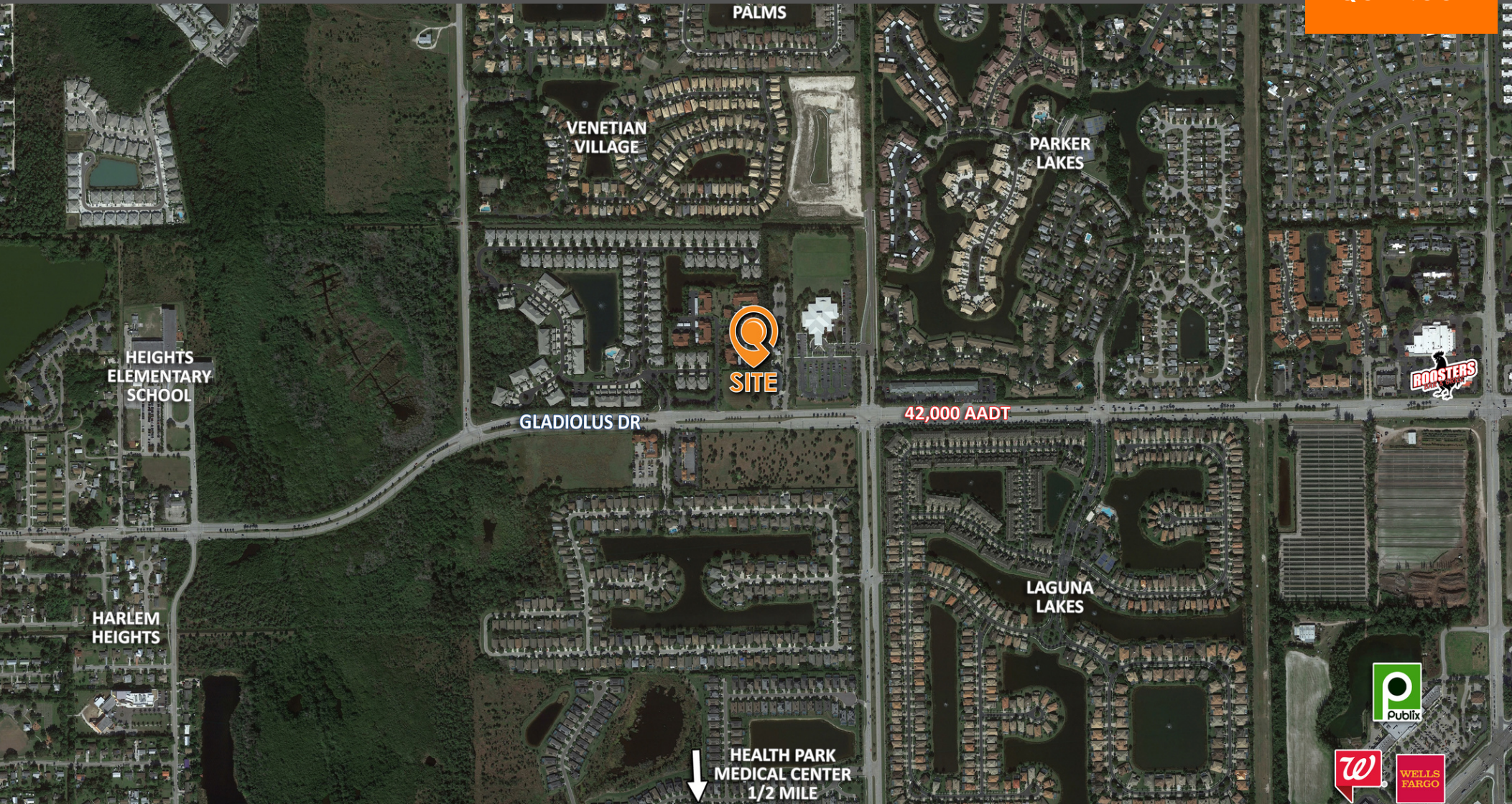
9680 Gladiolus Drive | Fort Myers, FL 33908

Commercial Land for Sale



LQ Commercial  
REAL ESTATE SERVICES

LQCRE.COM



LQ Commercial  
REAL ESTATE SERVICES

1614 Colonial Blvd #101  
Fort Myers, FL 33907

[LQCRE.COM](http://LQCRE.COM)

Mike Doyle, CCIM

Senior Associate

D: 239-275-4922

C: 239-851-3164

[mdoyle@lqcre.com](mailto:mdoyle@lqcre.com)