



578 MAIN STREET

MALDEN, MASSACHUSETTS

OFFICE/MEDICAL OFFICE

+/- 1,500 - 9,000+ SF

ORANGE LINE



Steve Nohrden
President
Steve@BurgessProperties.com

Charlie Jacob
Senior Associate
Charlie@BurgessProperties.com

 **BURGESS**
PROPERTIES
BurgessProperties.com

Information contained herein is from sources deemed reliable, however no guarantee is provided as to the accuracy thereof. All statements and conditions contained herein are subject to errors, omissions, prior sale, removal from the market, and subject to change without notice. Information contained herein may be confidential and any use, distribution, copying or disclosure by anyone unauthorized is strictly prohibited.

PROPERTY OVERVIEW

As Exclusive Agent for United Properties, Burgess Properties, LLC is pleased to present the opportunity to lease this rare **MEDICAL OFFICE** building in quickly-developing Malden Center. Excellent access to MBTA and major highways.

AVAILABLE SPACES

2nd Floor +/-1,503 - 4,500+ SF

1st Floor +/-4,859 SF

LL +/-200 - 500 SF Suites

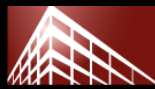
PASSENGER ELEVATOR

PARKING

+/-49 SPACES

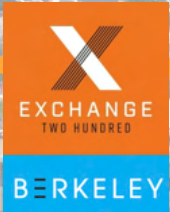
MBTA

ORANGE LINE T, COMMUTER RAIL & BUS AVAILABLE



NEIGHBORHOOD

Equity Residential



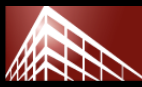
DOWNTOWN MALDEN LOCATION



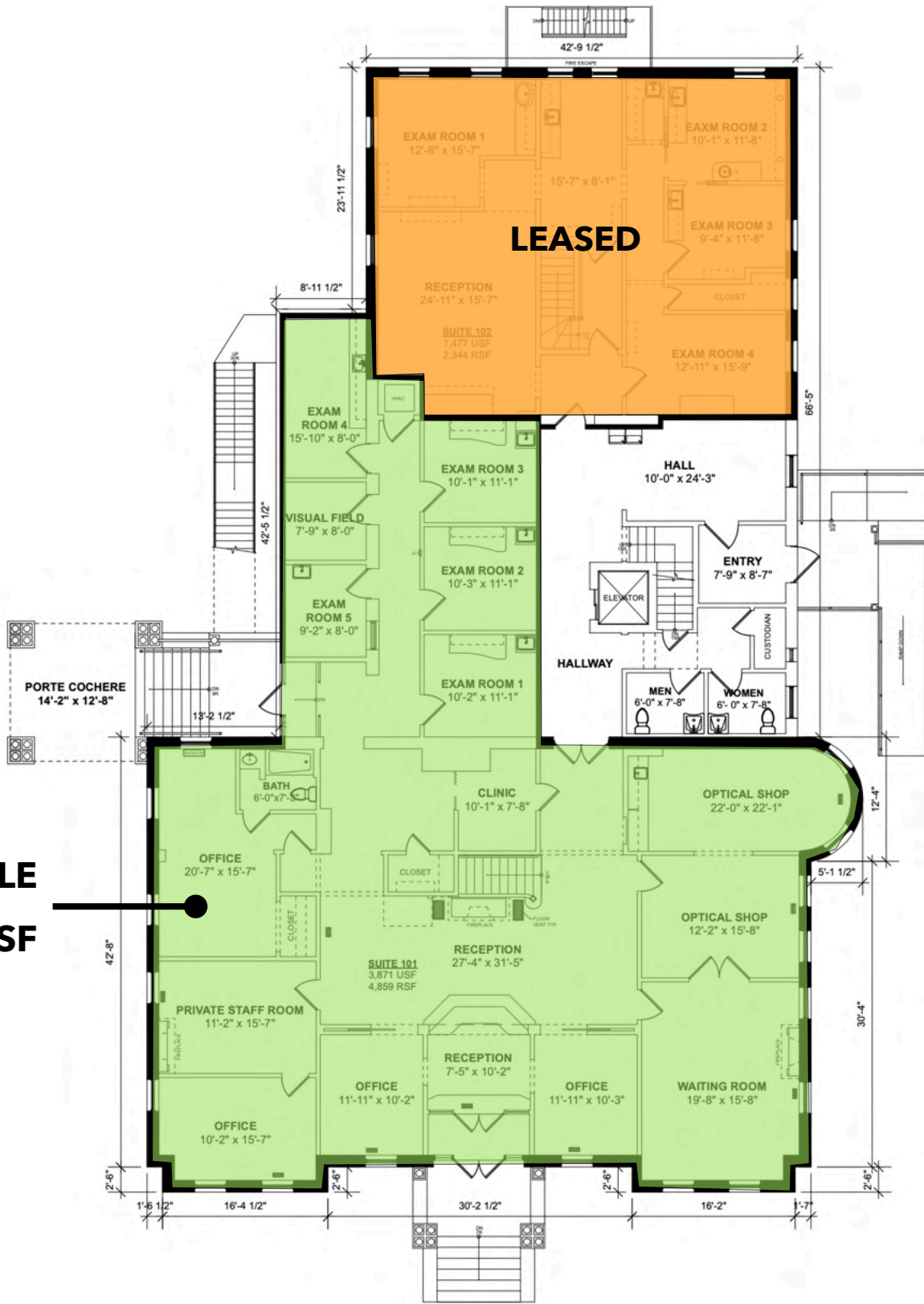
TENANTS INCLUDING



578 MAIN STREET



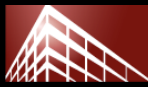
1ST FLOOR PLAN +/-4,859 SF



AVAILABLE
+/-4,859 SF

FIRST FLOOR PLAN
Ceiling Height = 10'-0"

NOT NECESSARILY TO SCALE

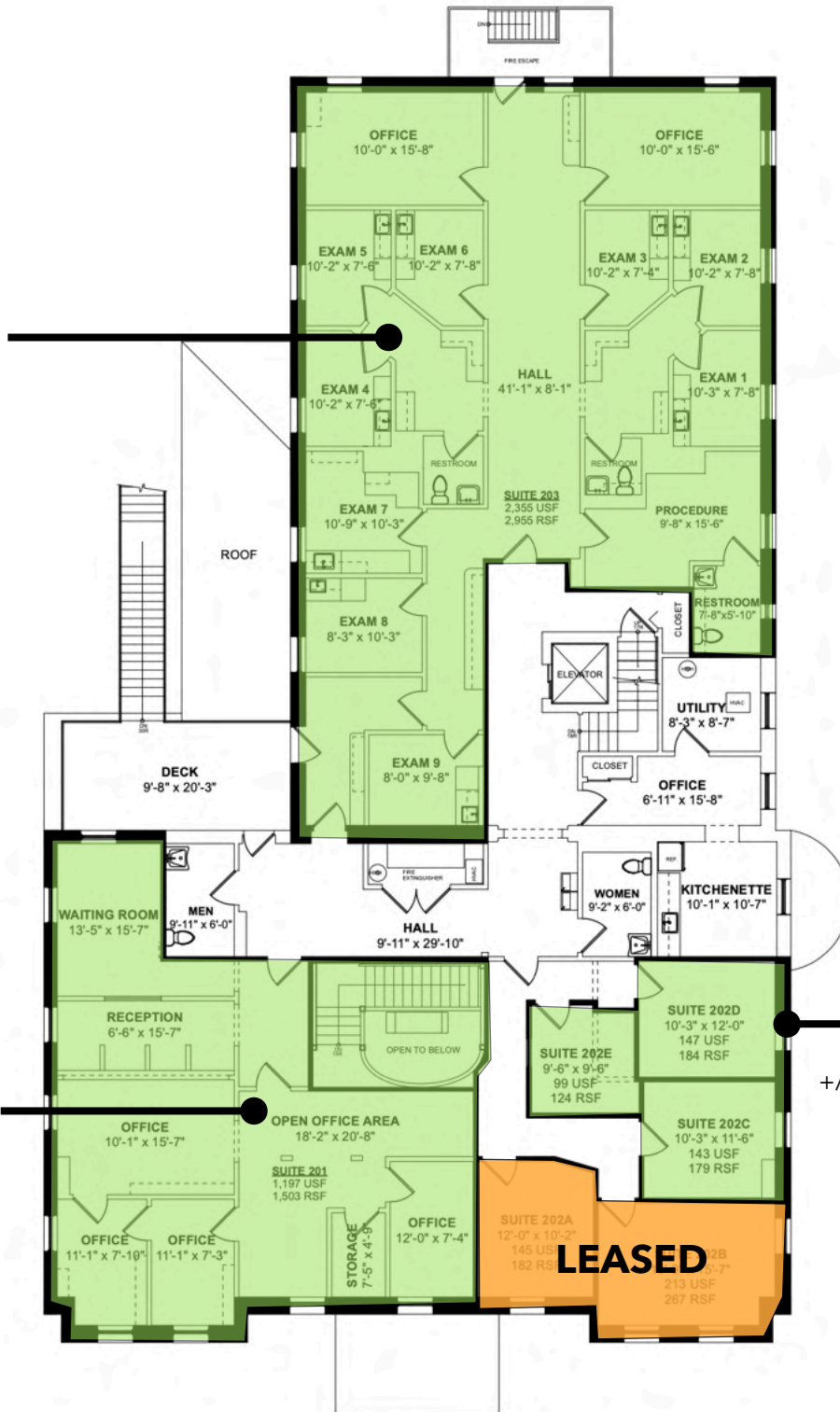


2ND FLOOR PLAN +/- 1,503 - 4,945 SF

AVAILABLE
+/- 2,955 SF

AVAILABLE
+/- 1,503 SF

AVAILABLE
+/- 124 - 487 SF



SECOND FLOOR PLAN
Ceiling Height = 8'-3"