

1241  
Columbia St.



INDUSTRIAL WAREHOUSE LEASE JUST SOUTH OF DOWNTOWN ORLANDO



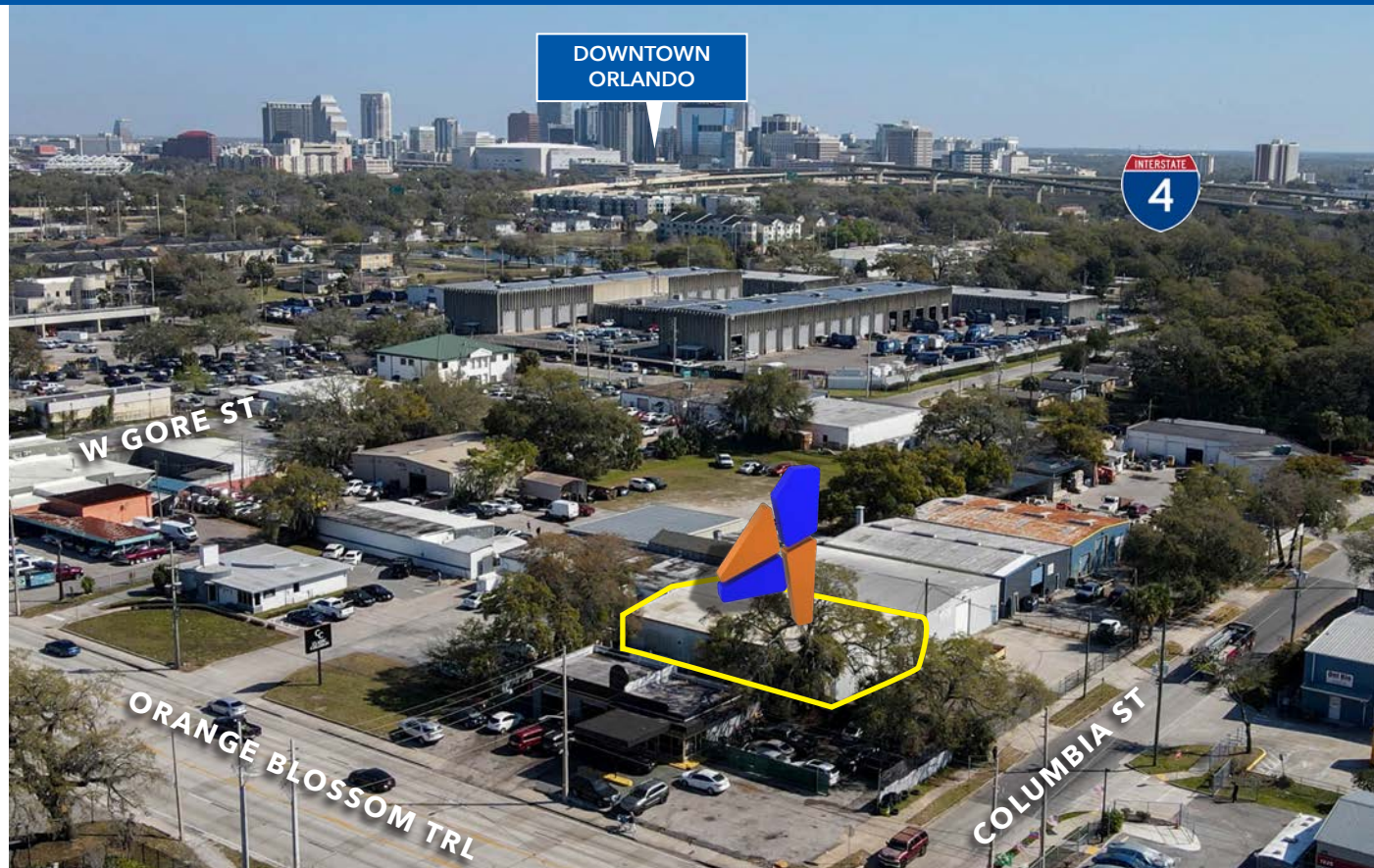
4,940 SF Warehouse  
1241 Columbia St, Orlando, FL 32805

CALL FOR  
DETAILS



## PROPERTY DETAILS

Lease Rate:	CALL FOR DETAILS
Building SF	4,940 SF
Location:	1241 Columbia St, Orlando, FL 32805
Municipality:	Orlando
Parcel ID:	34-22-29-8944-00-022
Zoning:	I-G/T
Property Use:	Industrial
Stories:	1+ Loft storage
Year Built:	1974
Parking:	1.79/1,000
Signage:	Pylon/Building



## HIGHLIGHTS

- Drive in Bay
- Rare find - Small Bay Industrial
- Easy Access to I-4 and 408

## Don't Miss Out!

Contact us today to discuss this amazing warehouse leasing opportunity!

## INDUSTRIAL WAREHOUSE LEASE JUST SOUTH OF DOWNTOWN ORLANDO

Discover a prime leasing opportunity for a rare small bay warehouse nestled close to downtown Orlando, offering unparalleled convenience with easy access to both I-4 and State Road 408. This coveted space combines the convenience of being centrally located with the practicality of modern logistics, making it an ideal hub for businesses seeking proximity to major transportation arteries. With its strategic location, this warehouse promises seamless connectivity to key business districts while providing the flexibility and functionality required for diverse operations. Embrace the opportunity to secure a dynamic space that perfectly balances accessibility, convenience, and potential for growth in the heart of Orlando's thriving commercial landscape.

OFFERED BY:



**Trey Dyer**

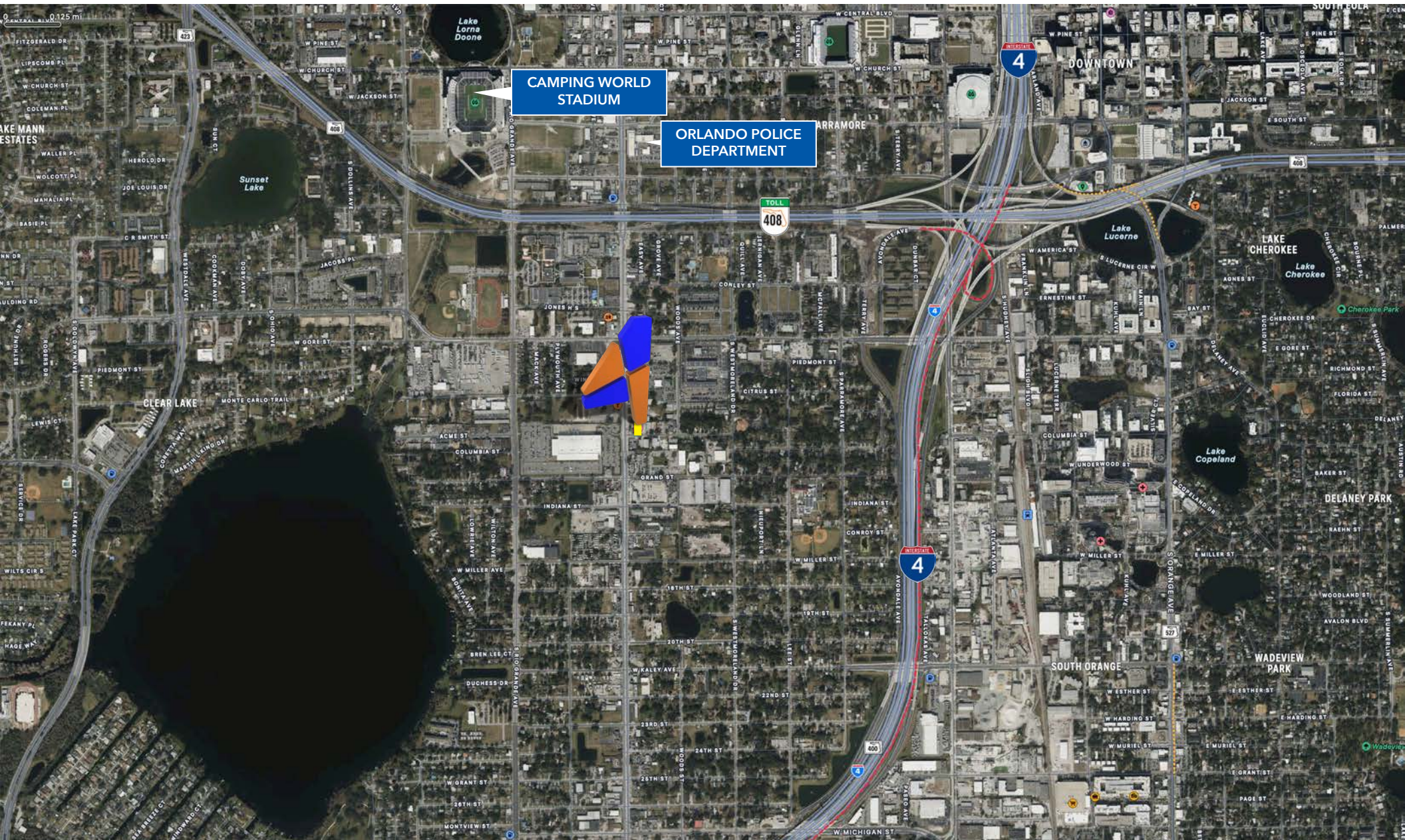
trey@4acre.com  
407.797.7767

**Garrett Gleiter**

garrett@4acre.com  
407.539.4514



# LOCATION MAP



4 ACRE COMMERCIAL | CONTACT TREY DYER AT 407.797.7767 | GARRETT GLEITER AT 407.539.4514





# LOCATION AERIAL





# AERIALS

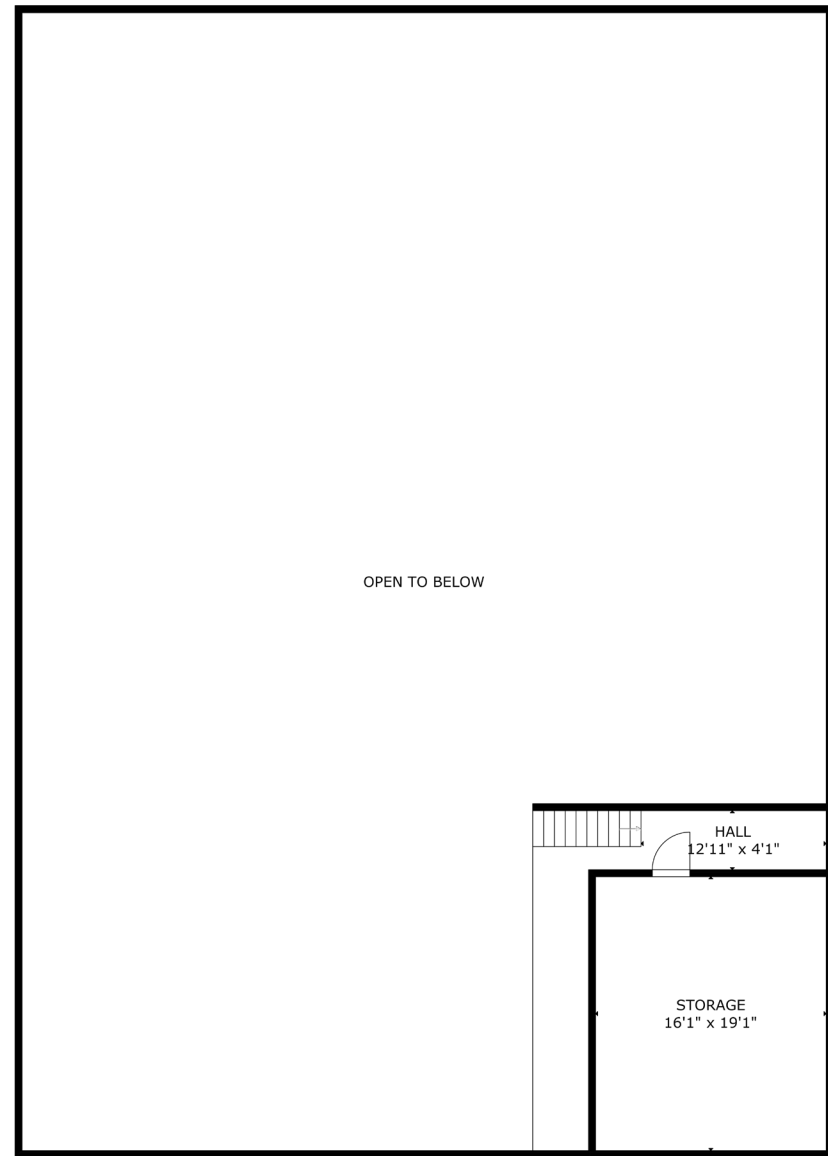
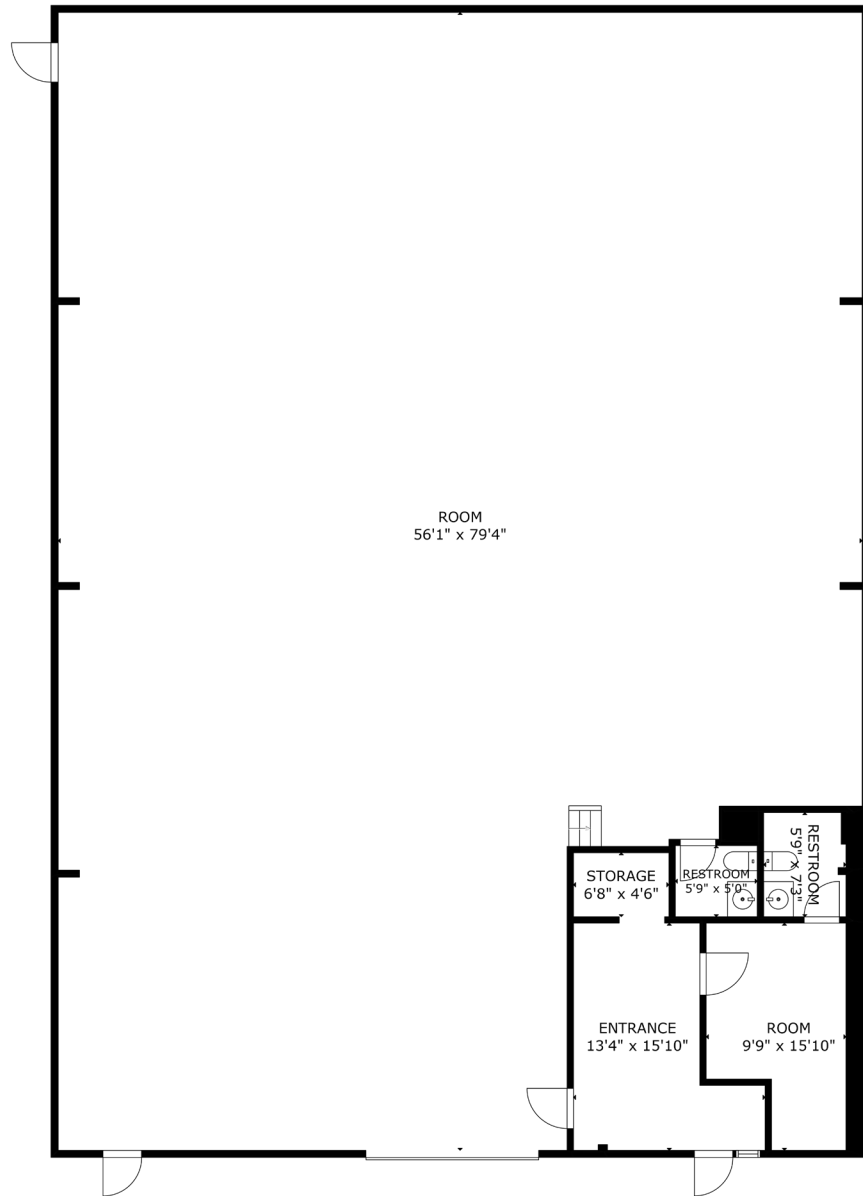




# ELEVATION

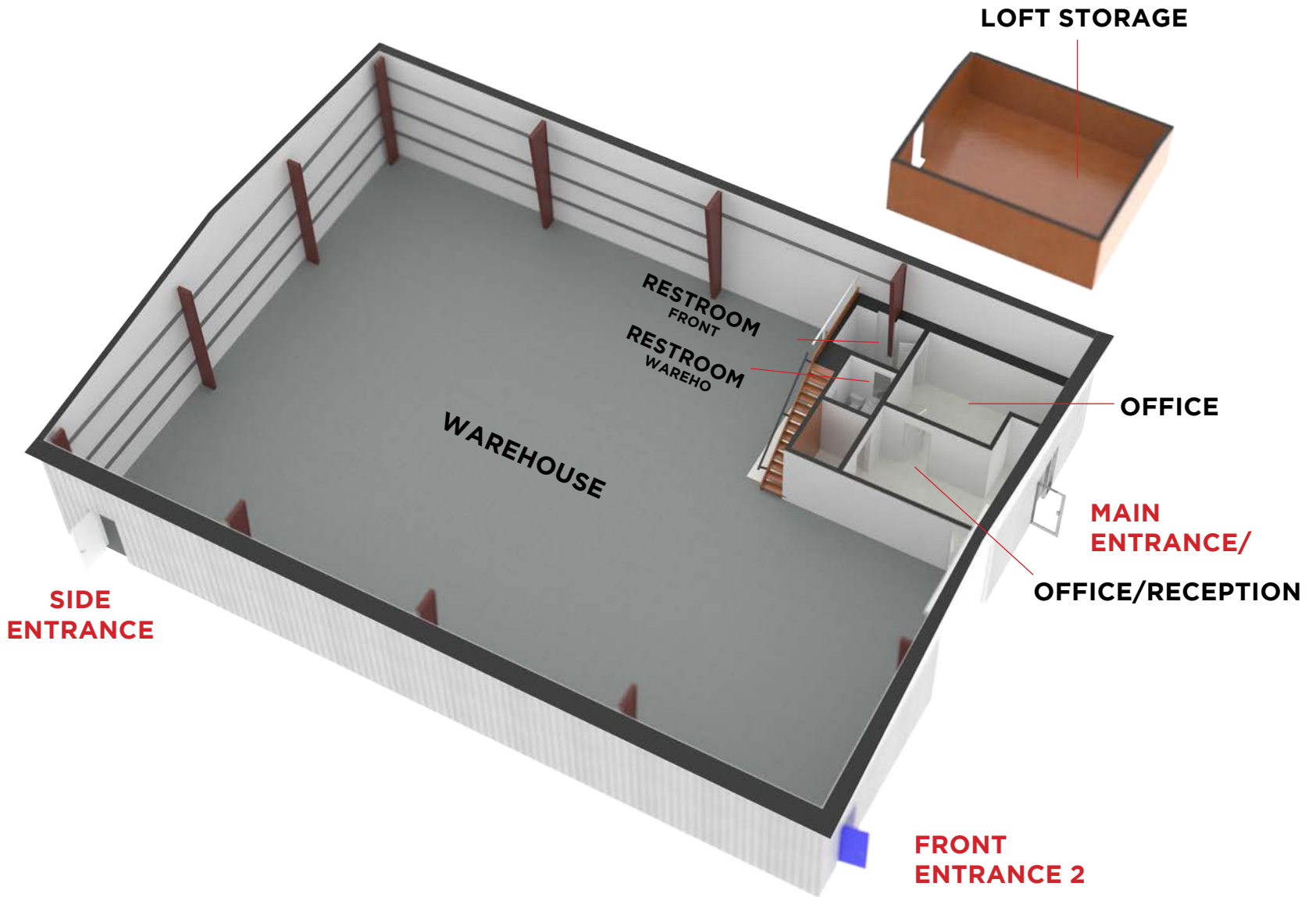


# FLOOR PLAN | 4,940 SF



FLOOR 2

# 3D LAYOUT | 4,940 SF







**Trey Dyer**

**trey@4acre.com**

**407.797.7767**

**Garrett Gleiter**

**garrett@4acre.com**

**407.539.4514**

4 Acre Commercial Real Estate (4 Acre) does not represent or warranty the accuracy of the information contained herein. Such information has been given to 4 Acre by the owner of the property or obtained from other sources deemed reliable. 4 Acre has no reason to doubt its accuracy, but does not guarantee it. The reviewer(s) of this document is encouraged to perform their own research for their own purposes to verify the dependability of the information being reviewed. All information should be verified by reviewer(s) prior to purchase or lease. Unless otherwise noted, the property is being offered as-is, where is, with all faults. This information represents the proprietary work product of 4 Acre Realty, LLC and may not be copied, reproduced, modified, distributed, published, transmitted, or otherwise disclosed without the express written consent of 4 Acre Realty, LLC.