

# CITY CENTRE PLAZA

2225 Civic Center Drive | 2290 McDaniel Street | North Las Vegas, NV 89030



## PROPERTY DETAILS

- City Centre Plaza:  
9,191 SF lease space available
- City Centre Plaza II:  
2,365 SF lease space available
- For office or medical office use
- Leasing is Negotiable
- 3 to 5 year lease terms
- Pricing upon request
- Built out space ready for immediate occupancy
- Across from North Las Vegas City Hall, Municipal Courts and within 1/2 mile of North Vista Hospital Campus
- Monument and building signage available

### BRUCE FOLLMER

President / Broker | Lic.# B.0018023

### GRANT BERGDOLL

Associate | Lic.# S.0204379

📍 1129 S. Casino Center Blvd. | Las Vegas, NV 89104 📞 702.347.7777 🌐 [mfrenv.com](http://mfrenv.com)



Disclaimer: The information above has been obtained from sources believed reliable. While we do not doubt its accuracy, we have not verified it and make no guarantee, warranty or representation about it. It is your responsibility to independently confirm its accuracy and completeness. Any projections, opinions, assumptions or estimates used are for example only and do not represent the current or future performance of the property. The value of this transaction to you depends on tax and other factors which should be evaluated by your tax, financial and legal advisors. You and your advisors should conduct a careful, independent investigation of the property to determine for your satisfaction the suitability of the property for your needs. This information has been prepared exclusively for the clients of Michaels Follmer Real Estate (MFRE) and is confidential. It is the property of MFRE, and reproduction of any portion without the written consent of MFRE is strictly prohibited.



**City Centre Plaza | 2225 Civic Center Drive**  
Level 1: +/- 22,356 RSF

Suite 130  
Suite 136  
Suite 155

+/- 2,428  
+/- 1,330  
+/- 1,458

Negotiable  
Negotiable  
Negotiable



President / Broker | Lic.# B.0018023

# GRANT BERGDOLL

Associate | Lic.# S.0204379

📍 1129 S. Casino Center Blvd. | Las Vegas, NV 89104 📞 702.347.7777 🌐 [mfrenv.com](https://mfrenv.com)

MICHAELS FOLLMER  
MFRE  
REAL ESTATE

Disclaimer: The information above has been obtained from sources believed reliable. While we do not doubt its accuracy, we have not verified it and make no guarantee, warranty or representation about it. It is your responsibility to independently confirm its accuracy and completeness. Any projections, opinions, assumptions or estimates used are for example only and do not represent the current or future performance of the property. The value of this transaction to you depends on tax and other factors which should be evaluated by your tax, financial and legal advisors. You and your advisors should conduct a careful, independent investigation of the property to determine for your satisfaction the suitability of the property for your needs. This information has been prepared exclusively for the clients of Michaels Follmer Real Estate (MFRE) and is confidential. It is the property of MFRE, and reproduction of any portion without the written consent of MFRE is strictly prohibited.

# FLOOR PLAN

**City Centre Plaza II | 2225 Civic Center Drive**

Level 2: +/- 17,912 RSF

**SUITES AVAILABLE:**

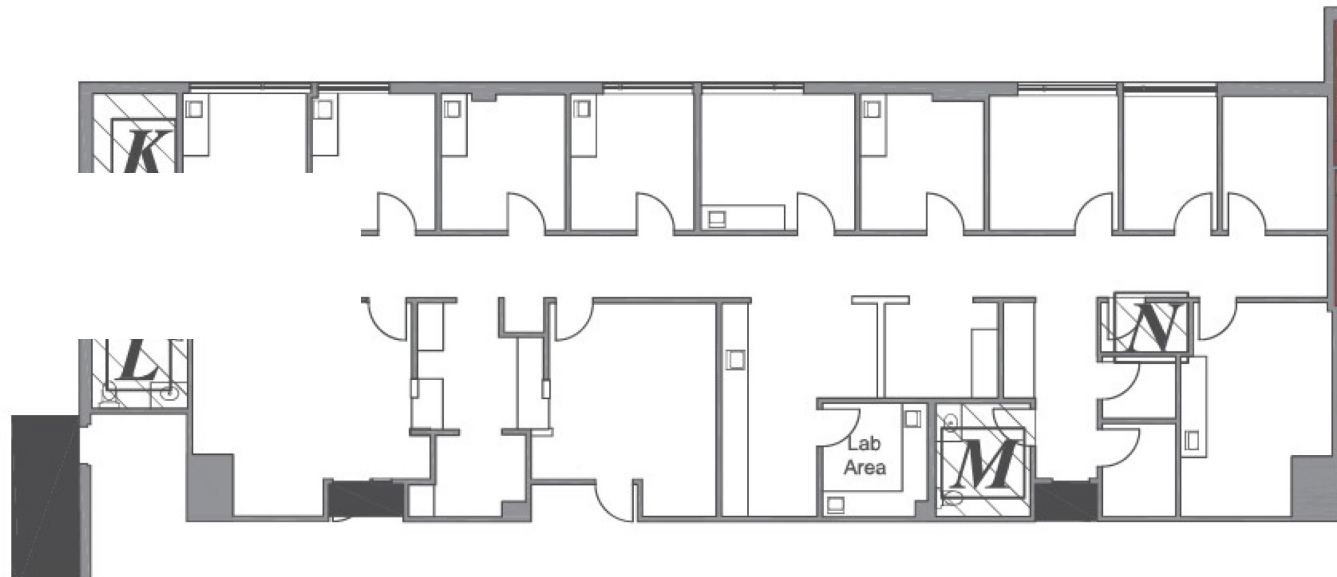
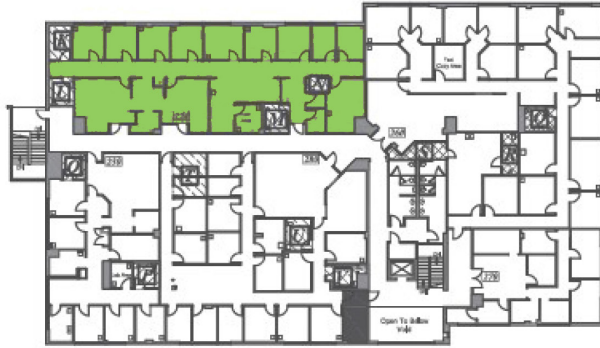
Suite 260

**SQUARE FOOTAGE:**

+/- 3,975

**LEASE RATE:**

Negotiable



**BRUCE FOLLMER**

President / Broker | Lic.# B.0018023

**GRANT BERGDOLL**

Associate | Lic.# S.0204379

📍 1129 S. Casino Center Blvd. | Las Vegas, NV 89104 📞 702.347.7777 🌐 [mfrenv.com](http://mfrenv.com)



Disclaimer: The information above has been obtained from sources believed reliable. While we do not doubt its accuracy, we have not verified it and make no guarantee, warranty or representation about it. It is your responsibility to independently confirm its accuracy and completeness. Any projections, opinions, assumptions or estimates used are for example only and do not represent the current or future performance of the property. The value of this transaction to you depends on tax and other factors which should be evaluated by your tax, financial and legal advisors. You and your advisors should conduct a careful, independent investigation of the property to determine for your satisfaction the suitability of the property for your needs. This information has been prepared exclusively for the clients of Michaels Follmer Real Estate (MFRE) and is confidential. It is the property of MFRE, and reproduction of any portion without the written consent of MFRE is strictly prohibited.

# FLOOR PLAN

**City Centre Plaza II | 2290 McDaniel Street**

Level 2: +/- 5,199 RSF

**SUITES AVAILABLE:**

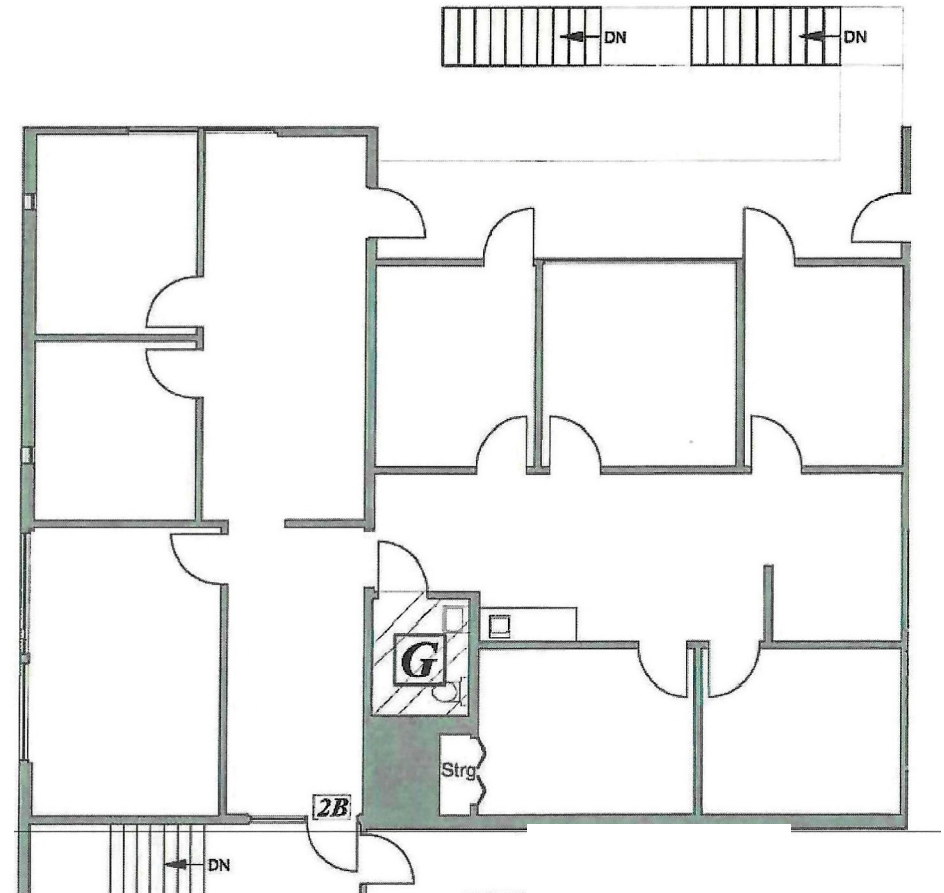
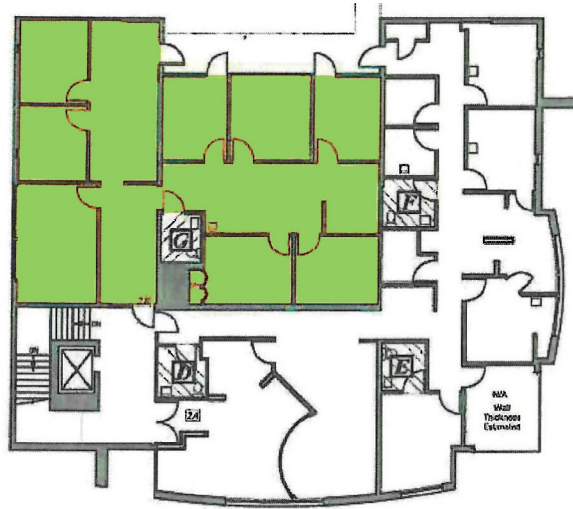
Suite 2B

**SQUARE FOOTAGE:**

+/- 2,365

**LEASE RATE:**

Negotiable



**BRUCE FOLLMER**

President / Broker | Lic.# B.0018023

**GRANT BERGDOLL**

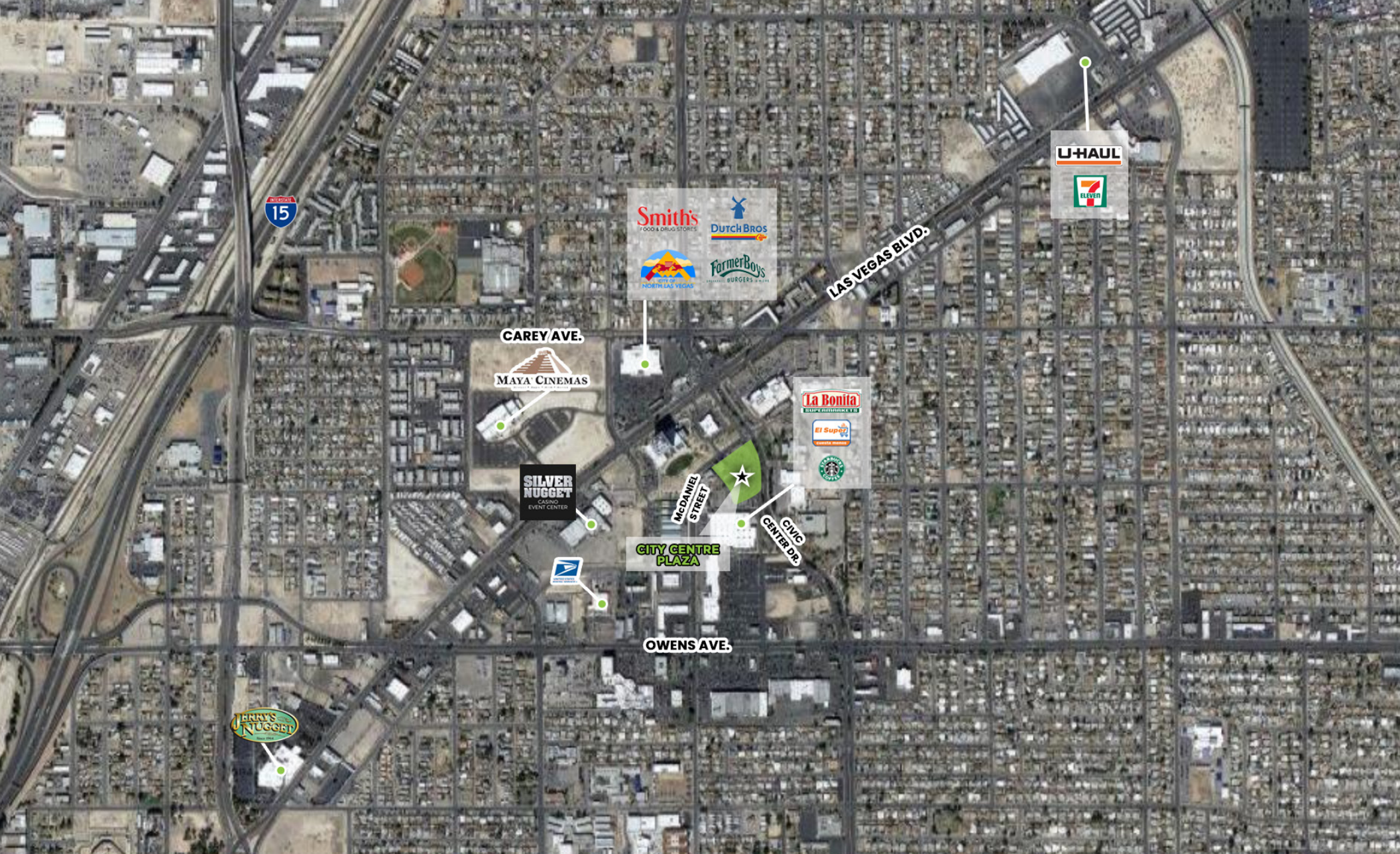
Associate | Lic.# S.0204379

📍 1129 S. Casino Center Blvd. | Las Vegas, NV 89104 📞 702.347.7777 🌐 [mfrenv.com](http://mfrenv.com)



Disclaimer: The information above has been obtained from sources believed reliable. While we do not doubt its accuracy, we have not verified it and make no guarantee, warranty or representation about it. It is your responsibility to independently confirm its accuracy and completeness. Any projections, opinions, assumptions or estimates used are for example only and do not represent the current or future performance of the property. The value of this transaction to you depends on tax and other factors which should be evaluated by your tax, financial and legal advisors. You and your advisors should conduct a careful, independent investigation of the property to determine for your satisfaction the suitability of the property for your needs. This information has been prepared exclusively for the clients of Michaels Follmer Real Estate (MFRE) and is confidential. It is the property of MFRE, and reproduction of any portion without the written consent of MFRE is strictly prohibited.





**BRUCE FOLLMER**

President / Broker | Lic.# B.0018023

**GRANT BERGDOLL**

Associate | Lic.# S.0204379

📍 1129 S. Casino Center Blvd. | Las Vegas, NV 89104 📞 702.347.7777 🌐 [mfrenv.com](http://mfrenv.com)



Disclaimer: The information above has been obtained from sources believed reliable. While we do not doubt its accuracy, we have not verified it and make no guarantee, warranty or representation about it. It is your responsibility to independently confirm its accuracy and completeness. Any projections, opinions, assumptions or estimates used are for example only and do not represent the current or future performance of the property. The value of this transaction to you depends on tax and other factors which should be evaluated by your tax, financial and legal advisors. You and your advisors should conduct a careful, independent investigation of the property to determine for your satisfaction the suitability of the property for your needs. This information has been prepared exclusively for the clients of Michael's Follmer Real Estate (MFRE) and is confidential. It is the property of MFRE, and reproduction of any portion without the written consent of MFRE is strictly prohibited.