

PRICE REDUCTION
\$1,500,000

±15,000 SF Remodeled 3-story Retail Building
on ±6,969 SF Lot in Old Town Lompoc, CA



ROB HAMBLETON
805.879.9611
rbambleton@radiusgroup.com
CA LIC. 01858350

JON OHLGREN
805.689.7839
joblgren@radiusgroup.com
CA LIC. 01464358





This three-story former hotel and now retail building is available for the first time in decades. The ground floor retail has been completely remodeled and has high ceilings, restrooms and ample space for any concept.



Opportunity Highlights

New Price	\$1,500,000
Building Size	±15,000 SF
Land Size	±6,969 SF
Ceiling Height	±20'
APN	085-161-012
Floors	Three (3)
Zoning	OTC (Old Town Commercial)
Sprinklers	None

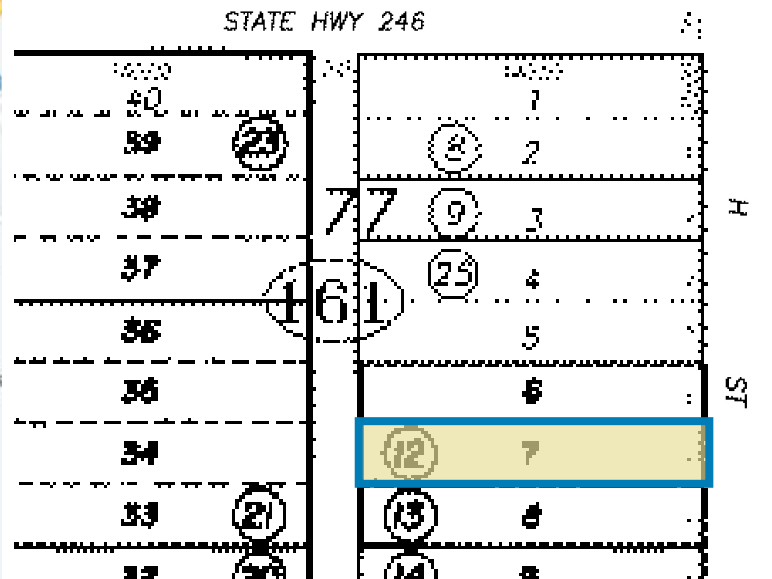
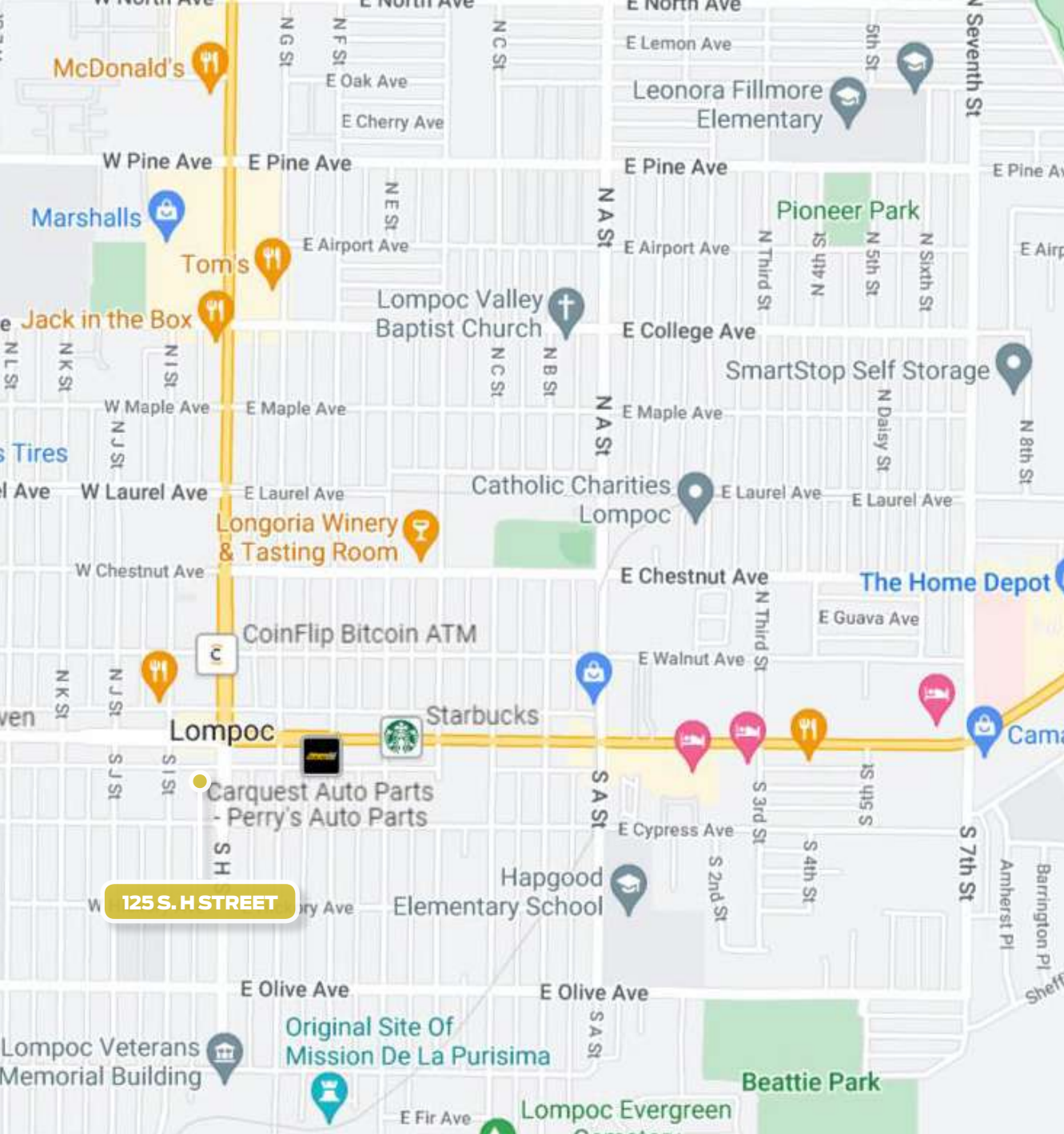
The information provided here has been obtained from the owner of the property or from other sources deemed reliable. We have no reason to doubt its accuracy, but we do not guarantee it.



ROB HAMBLETON
805.879.9611
rbambleton@radiusgroup.com
CA LIC. 01858350

JON OHLGREN
805.689.7839
joblgren@radiusgroup.com
CA LIC. 01464358





ROB HAMBLETON
 805.879.9611
rbamblenton@radiusgroup.com
 CA LIC. 01858350

JON OHLGREN
 805.689.7839
joblgren@radiusgroup.com
 CA LIC. 01464358



125 SOUTH
H STREET
LOMPOC
CA 93436

PRICE REDUCTION
Remodeled ±15,000 SF Retail Building
20 ft. ceilings on Ground Floor
Located in Old Town Lompoc



ROB HAMBLETON
805.879.9611
rbambleton@radiusgroup.com
CA LIC. 01858350

JON OHLGREN
805.689.7839
joblgren@radiusgroup.com
CA LIC. 01464358



SELECT NEARBY AMENITIES & POINTS OF INTEREST

SUBJECT PROPERTY

W. OCEAN AVE.

OLD TOWN LOMPOC

- 1 Cypress Gallery
- 2 Lompoc Museum
- 3 Lompoc Valley Middle School
- 4 Ryon Park
- 5 Lompoc Valley Historical Society
- 6 Sushi Teri Lompoc
- 7 Lompoc Civic Center
- 8 Starbucks
- 9 Solvang Brewing Company
- 10 Bread Board Deli
- 11 Brewer Clifton Winery
- 12 Longoria Winery & Tasting room
- 13 Stolpman Winery
- 14 South Side Coffee Co.
- 15 Grocery Outlet
- 16 Pier Fitness Health Club
- 17 Lompoc Valley Medical Center
- 18 The Home Depot
- 19 Montemar Wines
- 20 Lompoc Aquatic Center
- 21 Lompoc High School
- 22 ALDI
- 23 Marshalls
- 24 Ulta Beauty
- 25 La Botte Italian
- 26 Embassy Suites by Hilton
- 27 Albertsons
- 28 Lompoc City Airport

ROB HAMBLETON
805.879.9611
rbambleton@radiusgroup.com
CA LIC. 01858350

JON OHLGREN
805.689.7839
joblgren@radiusgroup.com
CA LIC. 01464358





CITY OF ARTS & FLOWERS

Old Town Lompoc

This charming and storied section of Lompoc showcases an array of boutiques and cafés, including the Lompoc Museum and the Cypress Gallery. With nearly 40 murals adorning street corners, alleyways, and the sides of prominent buildings, Old Town Lompoc has transformed into an open-air art gallery.

The Lompoc Murals stand out as one of the city's premier attractions, portraying vignettes of Lompoc's heritage, floral industry, historic landmarks, cultural diversity, scenic magnificence, and beyond. Adding to the ambiance, Lompoc's neon signs illuminate Old Town, evoking a nostalgic vintage ambiance.

Come Friday nights during the summer season, Old Town Market bustles with energy, offering live music, a farmers market, local artisans, and engaging events. Throughout the year, the Lompoc Farmers Market takes its place every Friday afternoon in Old Town, showcasing locally cultivated produce and flowers.

Located on scenic Pacific Coast Highway, Lompoc is approximately 55 miles northwest of Santa Barbara, 155 miles northwest of Los Angeles and 270 miles southeast of San Francisco. The Pacific Ocean is roughly nine miles from town. The Lompoc Valley is a key part of the Central California region with a population of approximately 44,398. Vandenberg Air Force Base — a major regional employer — is 10 miles northwest of the City and is among the nation's most important military and aerospace installations.