

# Tucson Airport Commerce Center

2560 E Commerce Center Pl | Tucson, AZ



**FOR SALE OR BTS**

±5.8 AC  
AVAILABLE

140-26-037A  
APN

I-1 & P-1, City of Tucson  
ZONING [\(CLICK HERE\)](#)

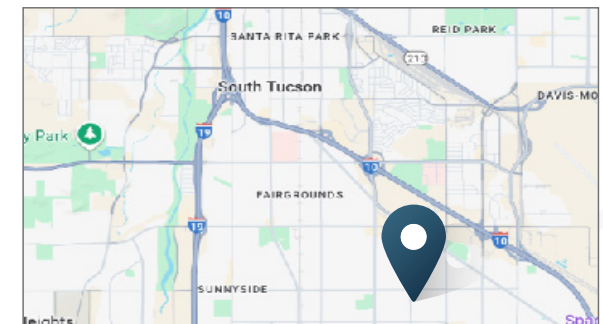
Contact  
Broker  
PRICE

## ABOUT THE PROPERTY

- ±5.82 acre (253,519 SF) expansive lot offering ample space for commercial uses
- Positioned in a high-demand commerce and industrial district, providing strong visibility and easy access for customers and suppliers
- Adjacent to Walmart Neighborhood Market Center
- The property is situated within the Tucson Airport Commerce Center, a strategic location in a rapidly thriving business corridor
- Utilities Available – Water, sewer, electric, and gas

## TRAFFIC COUNTS

Tucson Blvd	13,480 VPD
Drexel Rd	8,704 VPD
Year: 2024   Source: ADOT	

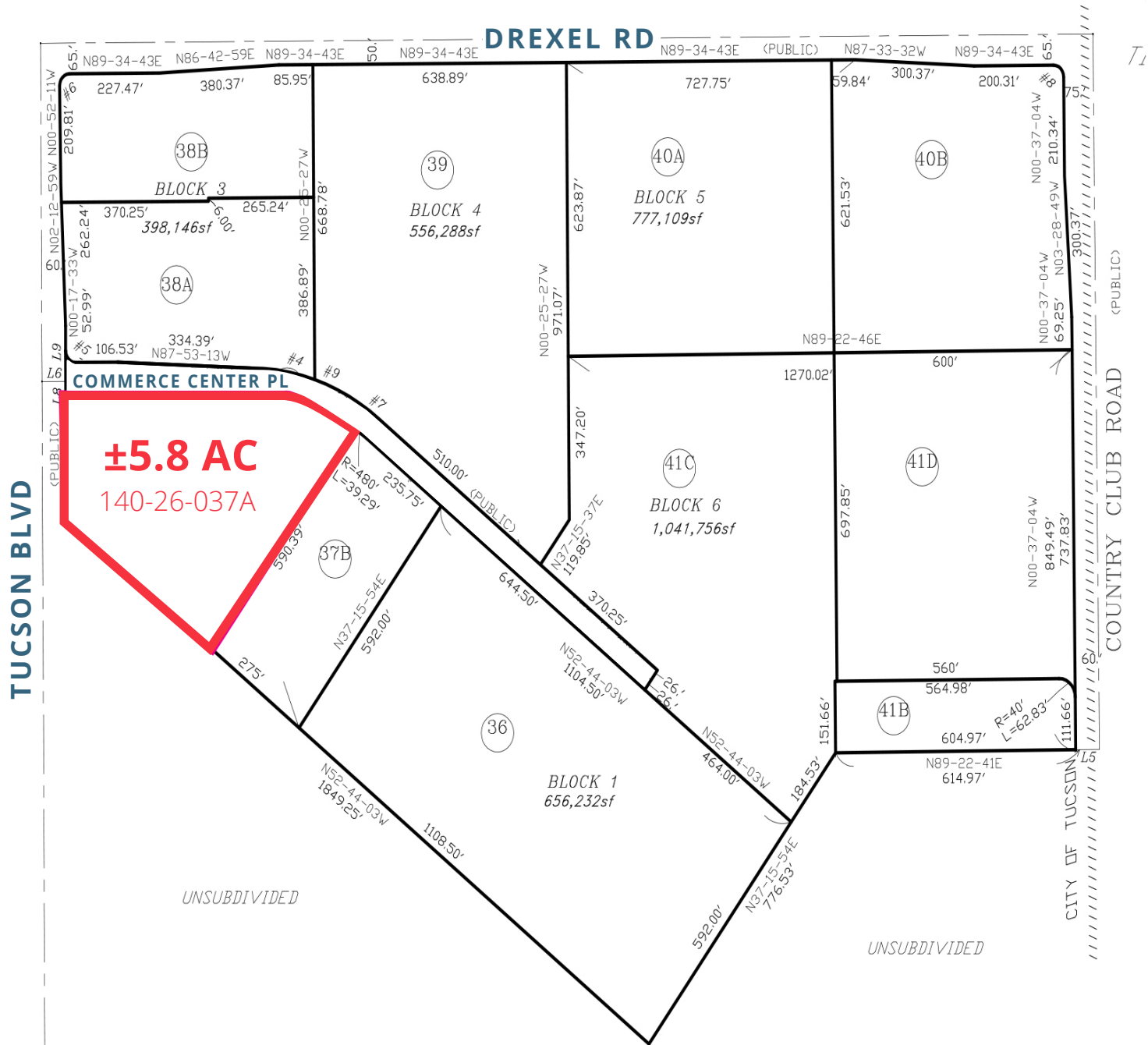


# Tucson Airport Commerce Center

2560 E Commerce Center Pl | Tucson, AZ



## SITE PLAN





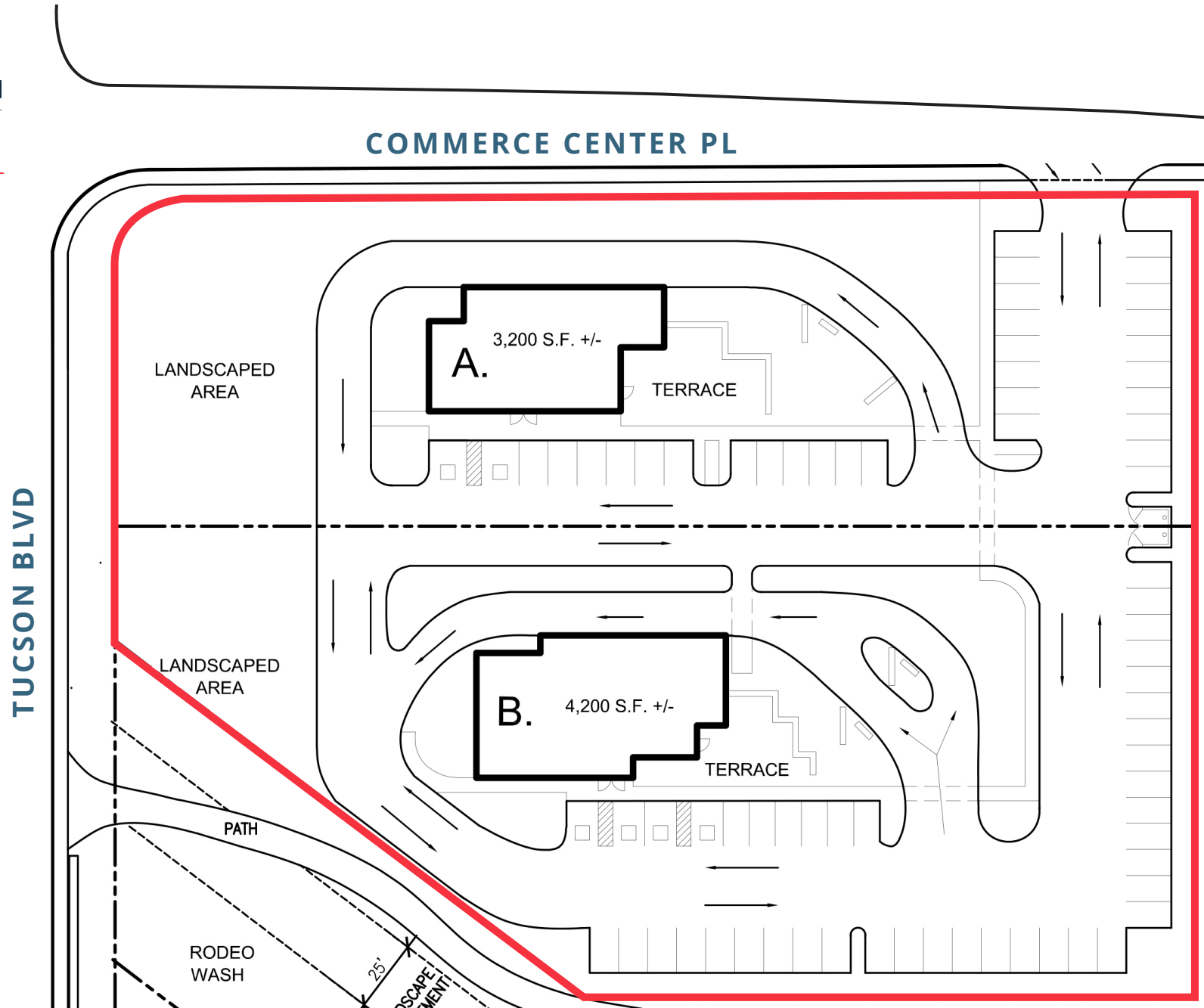
# Tucson Airport Commerce Center

2560 E Commerce Center Pl | Tucson, AZ



## 1 SITE PLAN

CONCEPTUAL  
RETAIL



# Tucson Airport Commerce Center

2560 E Commerce Center Pl | Tucson, AZ



## 2 SITE PLAN

CONCEPTUAL  
OFFICE  
BUILDING





# Tucson Airport Commerce Center

2560 E Commerce Center Pl | Tucson, AZ



## DEMOGRAPHIC HIGHLIGHTS (2025)

### 1 MILE

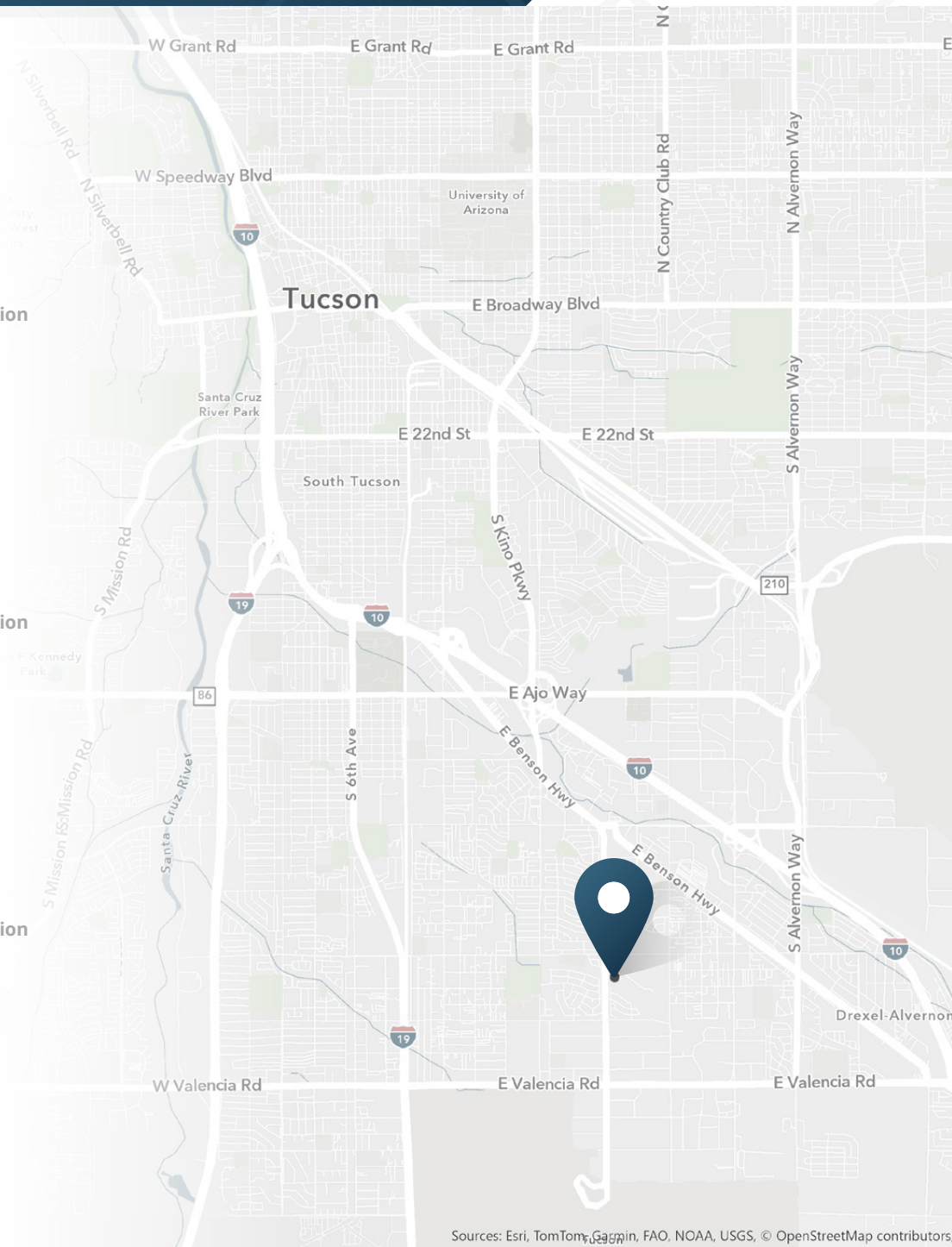
15,963	15,867	\$68,918	14,189
2025 Population	2030 Population	Avg Household Income	Daytime Population

### 3 MILES

74,313	74,077	\$72,630	87,774
2025 Population	2030 Population	Avg Household Income	Daytime Population

### 5 MILES

159,490	159,700	\$72,231	203,588
2025 Population	2030 Population	Avg Household Income	Daytime Population





# SEC Drexel Road & Tucson Boulevard

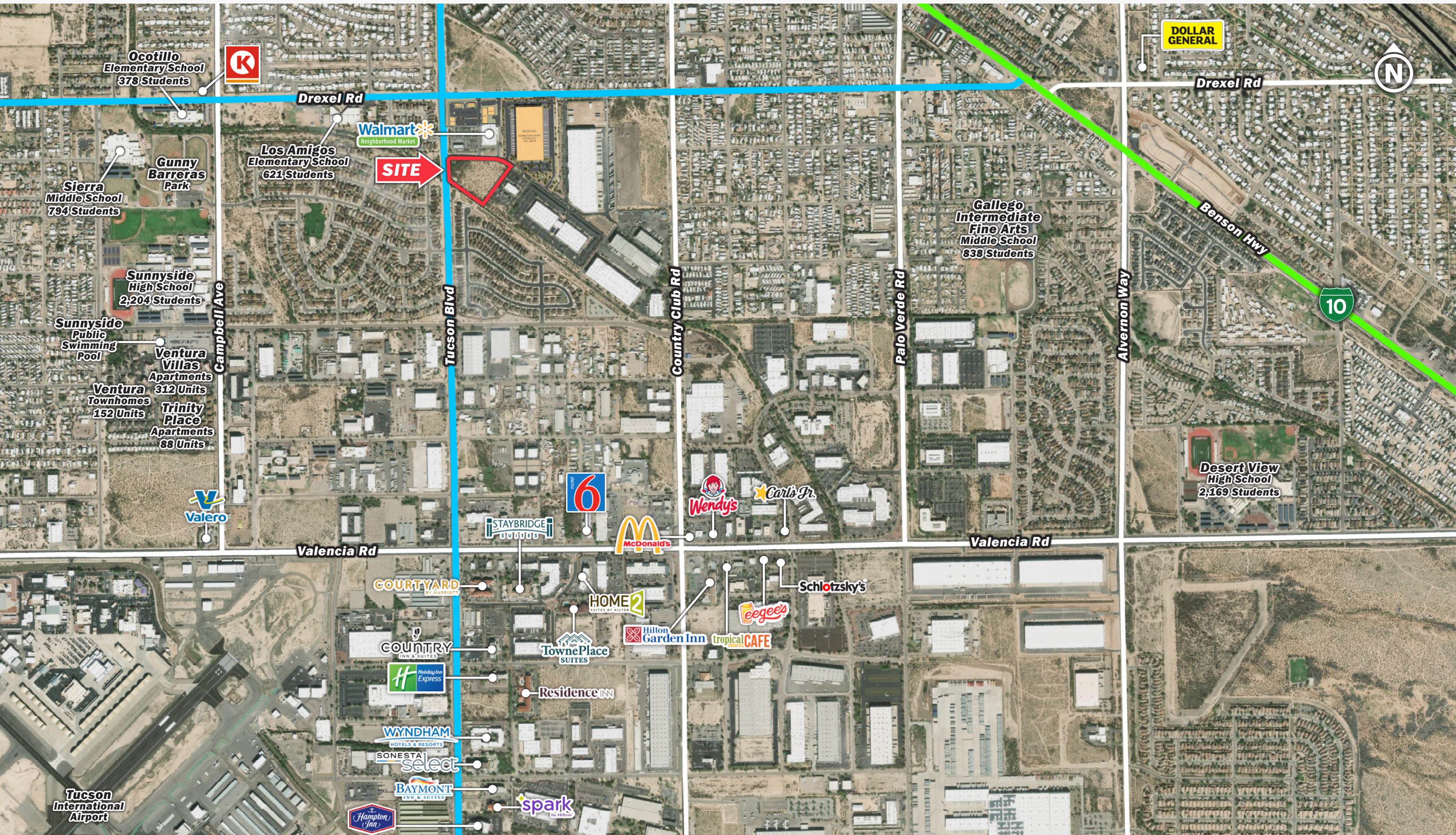
2560 East Commerce Center Place | Tucson, Arizona 85706





# SEC Drexel Road & Tucson Boulevard

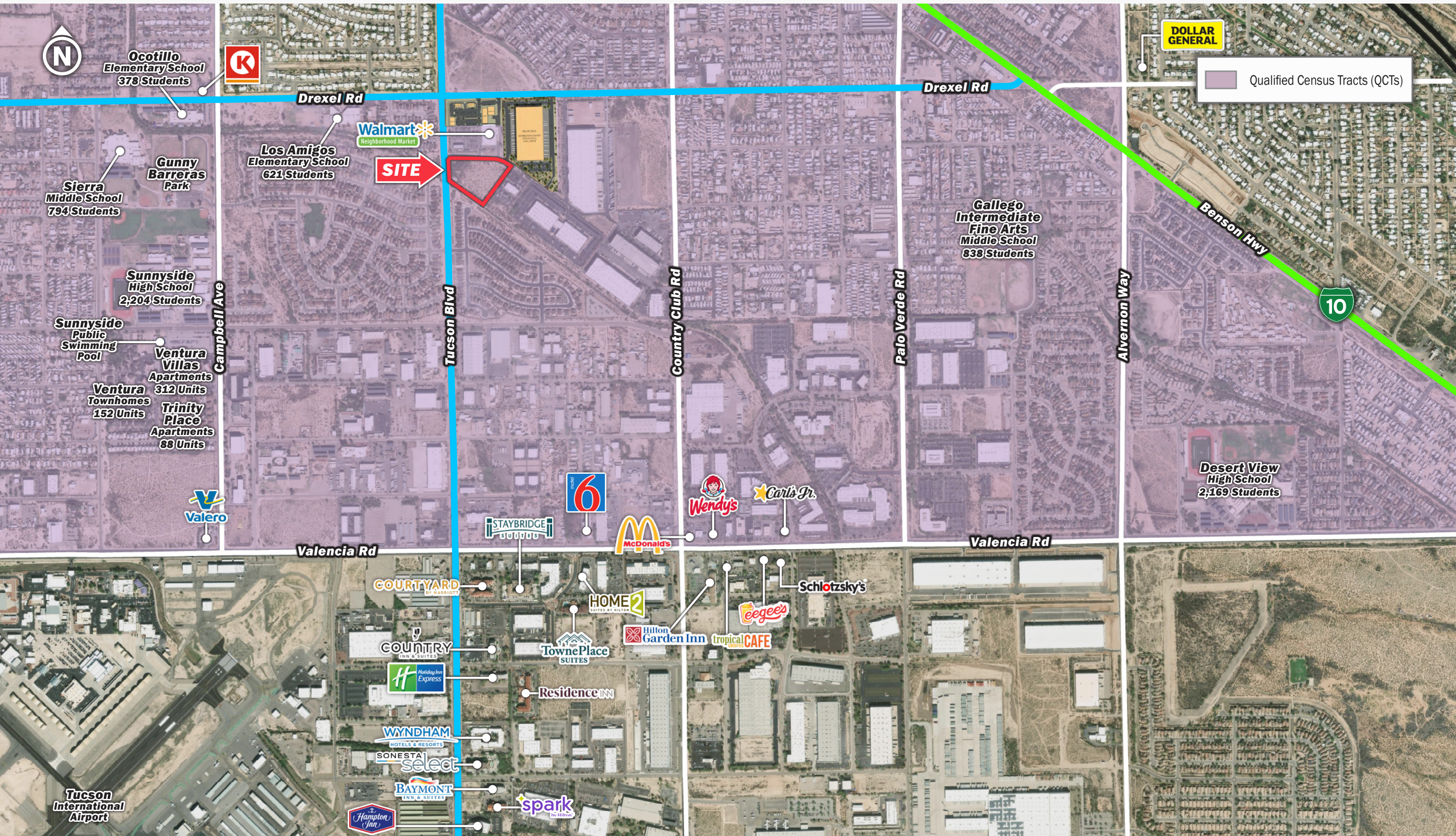
2560 East Commerce Center Place | Tucson, Arizona 85706





# SEC Drexel Road & Tucson Boulevard

2560 East Commerce Center Place | Tucson, Arizona 85706







**SRS**

3131 E Camelback Road, Suite 110  
Phoenix, AZ 85016  
602.682.6000

**BRAD BALBO**

602.682.6016

[brad.balbo@srsre.com](mailto:brad.balbo@srsre.com)

**SRSRE.COM**

© SRS

The information presented was obtained from sources deemed reliable;  
however SRS does not guarantee its completeness or accuracy.