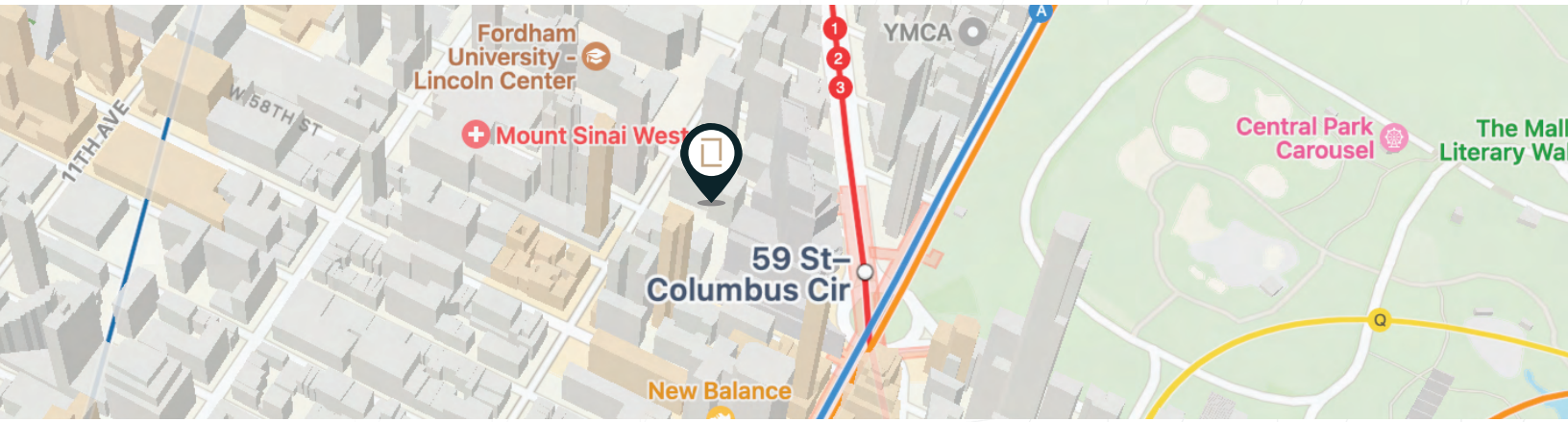




MEDICAL OFFICE FOR LEASE

**30 W 60TH ST #1S**  
**NEW YORK, NY 10019**



# LISTING BRIEF

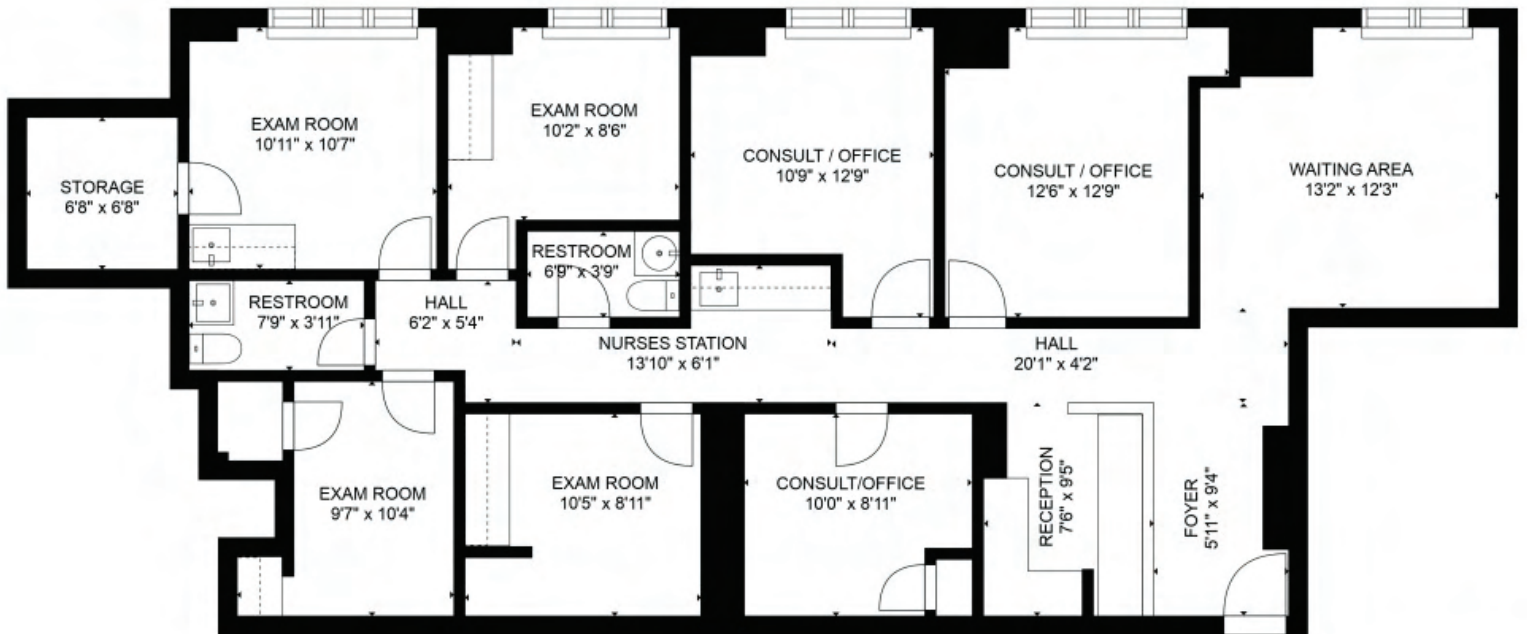
Discover this prime medical office space near Columbus Circle. Benefit from unparalleled visibility and accessibility, close to Mount Sinai West and public transit. Join a thriving healthcare community in one of NYC's most sought-after neighborhoods.

- 1,600 SF MEDICAL OFFICE IN PRISTINE CO-OP BUILDING
- 8 CONSULT/EXAM ROOMS
- TWO PRIVATE BATHROOMS
- MODERN WAITING ROOM + RECEPTIONIST DESK
- NATURAL LIGHT THROUGHOUT

 NYS  
SPACE  
FINDERS



# FLOOR PLAN



FLOOR PLAN FOR ILLUSTRATIVE PURPOSES ONLY

# NEARBY MEDICAL TENANTS



Mount  
Sinai

one medical



CityMD



SO  
UL  
DENTAL

**MOTION**  
PT Group

# MEDICAL OFFICE PHOTOS





# CONTACT



**LUCA DICIERO**  
FOUNDER & CEO

---

(347) 242-0353  
luca@nyspacefinders.com



**FAISAL GILANI**  
LICENSED REAL ESTATE  
SALESPERSON

---

(925) 285-3075  
faisal@nyspacefinders.com



**DAMIAN DAKAS**  
LICENSED REAL ESTATE  
SALESPERSON

---

(516) 840-2002  
damian@nyspacefinders.com