

10200 Grand Central Ave,
Owings Mills, MD 21117

BUILDING
SPECS



KEVIN KEANE

Senior Vice President
of Office Leasing
410.581.2519
kevin@davidsbrown.com

BRENT MANGUM

Vice President
of Office Leasing
410.581.2518
brent@davidsbrown.com

NOAH ADLER

Leasing Associate
410.581.2510
nadler@davidsbrown.com



10200 Grand Central Ave,
Owings Mills, MD 21117

BUILDING SPECS

Overview

- Existing four-story mid-rise Class A mixed-use office/retail building
- 178,000 total RSF
- 142,000 SF of office space
- 36,000 SF of street-level retail space
- Attached, enclosed bridge entry directly into the building from the free, parking garage
- Fitness Center within building
- Exterior signage available. Visible to 140k cars daily
- Direct access to Metro subway station

Total RSF - 178,000 RSF

LEVEL 1	RETAIL - ALL LEASED
LEVEL 2	1,460 SF OFFICE - AVAILABLE
LEVEL 3	OFFICE - ALL LEASED
LEVEL 4	OFFICE - ALL LEASED

Column spacing
35'

Celing Height
10'-0" AFF

Delivery
Available Now

Owner/Developer/Property Managers
David S Brown Enterprises

Parking - Office
Attached Garage - 2,865 Spaces

Architect
Curry Architects

General Contractor
David S Brown Enterprises

Transportation
Direct access to I-795
Direct access to Owings Mills Metro Station



KEVIN KEANE

Senior Vice President
of Office Leasing
410.581.2519
kevin@davidsbrown.com

BRENT MANGUM

Vice President
of Office Leasing
410.581.2518
brent@davidsbrown.com

NOAH ADLER

Leasing Associate
410.581.2510
nadler@davidsbrown.com

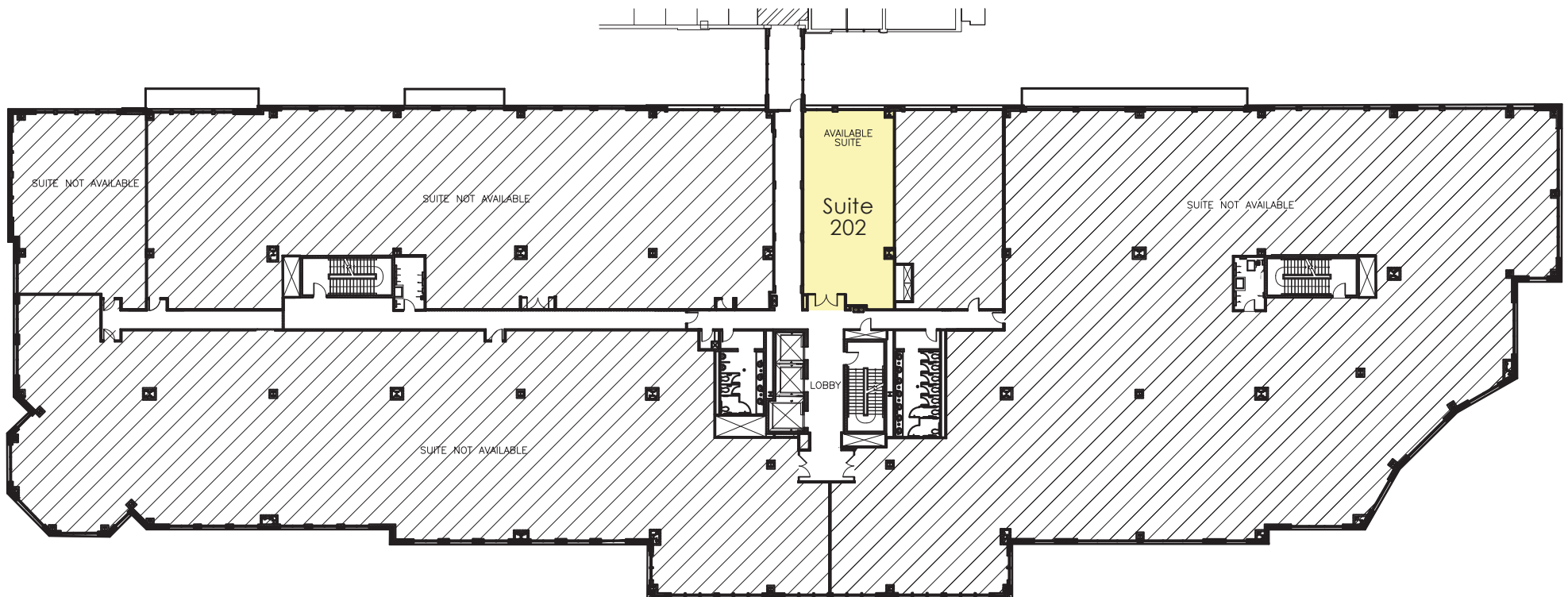


10200 Grand Central Ave,
Owings Mills, MD 21117

LEVEL
2

Available

Suite 202: 1,460 SF



**METRO
CENTRE**

KEVIN KEANE

Senior Vice President
of Office Leasing
410.581.2519
kevin@davidsbrown.com

BRENT MANGUM

Vice President
of Office Leasing
410.581.2518
brent@davidsbrown.com

NOAH ADLER

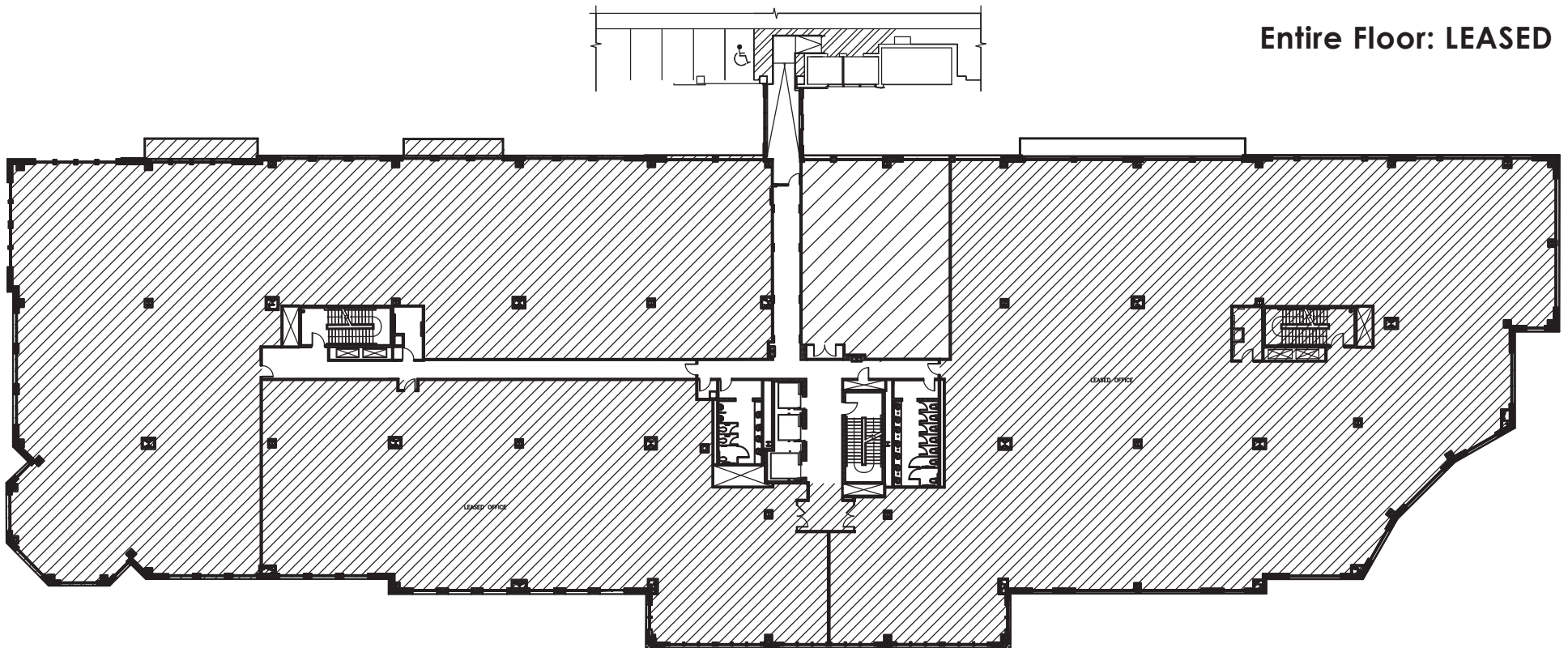
Leasing Associate
410.581.2510
nadler@davidsbrown.com



10200 Grand Central Ave,
Owings Mills, MD 21117

LEVEL
3

Entire Floor: LEASED



KEVIN KEANE

Senior Vice President
of Office Leasing
410.581.2519
kevin@davidsbrown.com

BRENT MANGUM

Vice President
of Office Leasing
410.581.2518
brent@davidsbrown.com

NOAH ADLER

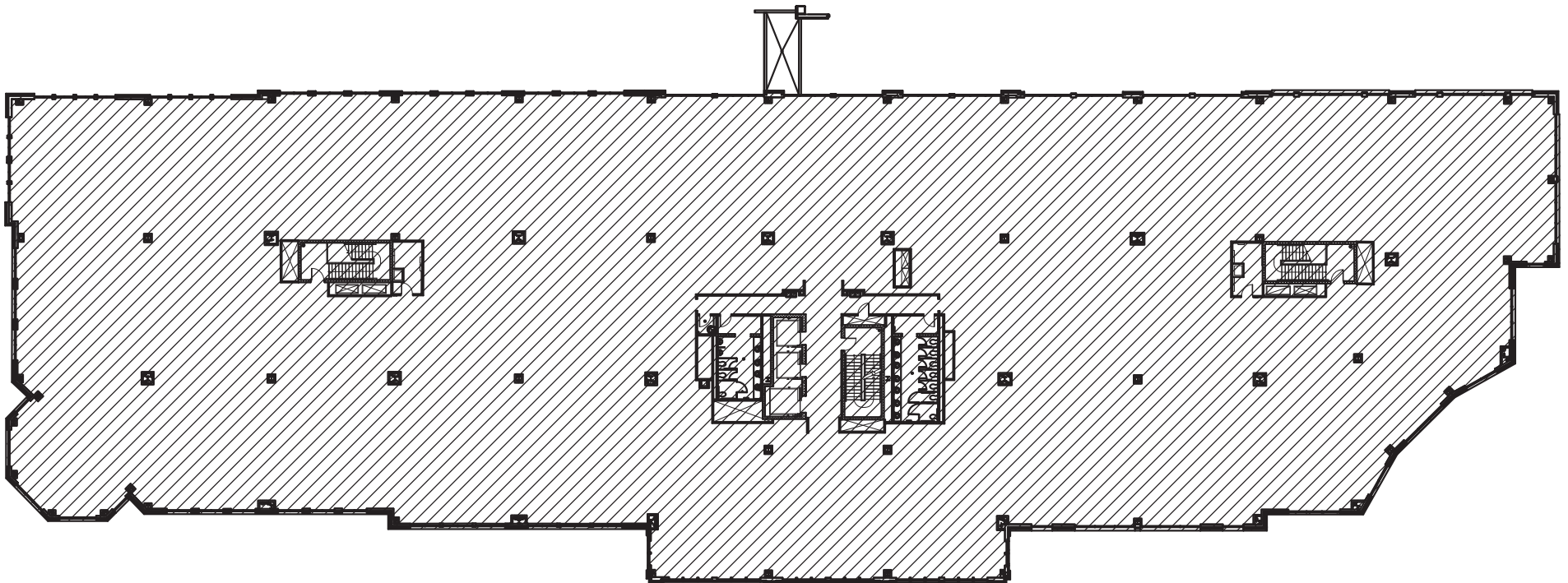
Leasing Associate
410.581.2510
nadler@davidsbrown.com



10200 Grand Central Ave,
Owings Mills, MD 21117

LEVEL
4

Entire Floor: LEASED



METRO
CENTRE

KEVIN KEANE

Senior Vice President
of Office Leasing
410.581.2519
kevin@davidsbrown.com

BRENT MANGUM

Vice President
of Office Leasing
410.581.2518
brent@davidsbrown.com

NOAH ADLER

Leasing Associate
410.581.2510
nadler@davidsbrown.com

