

# FOR SALE / MORENA BOULEVARD SUBMARKET ±6,400 SF INDUSTRIAL BUILDING ON ±0.87 ACRES

FULLY FENCED AND SECURED YARD

1018 CUDAHY PLACE, SAN DIEGO, CA 92110



**GLENN ARNOLD**

SENIOR VICE PRESIDENT/PARTNER  
LIC. #00953038 | 858.458.3319  
GARNOLD@VOITCO.COM

**RANDY LaCHANCE**

EXECUTIVE VICE PRESIDENT  
LIC. #00969674 | 858.458.3374  
RLACHANCE@VOITCO.COM

**MILES ARNOLD**

SENIOR ASSOCIATE  
LIC. #02094013 | 858.458.3324  
MARNOLD@VOITCO.COM

***Voit***  
REAL ESTATE SERVICES



# PROPERTY SUMMARY

## ADDRESS

1018 Cudahy Place, San Diego, CA 92110

## BUILDING SIZE

±6,400 SF two story industrial including second floor offices

## LOT SIZE

±37,897 Square Feet

## ESTIMATED EXCESS LAND

19,715 Square Feet

## CONSTRUCTION TYPE

Wood Frame and Stucco

## PARCEL NUMBER

436-296-06

## YEAR BUILT

1973

## ZONING

IL3-1

## COUNTY / SUBMARKET

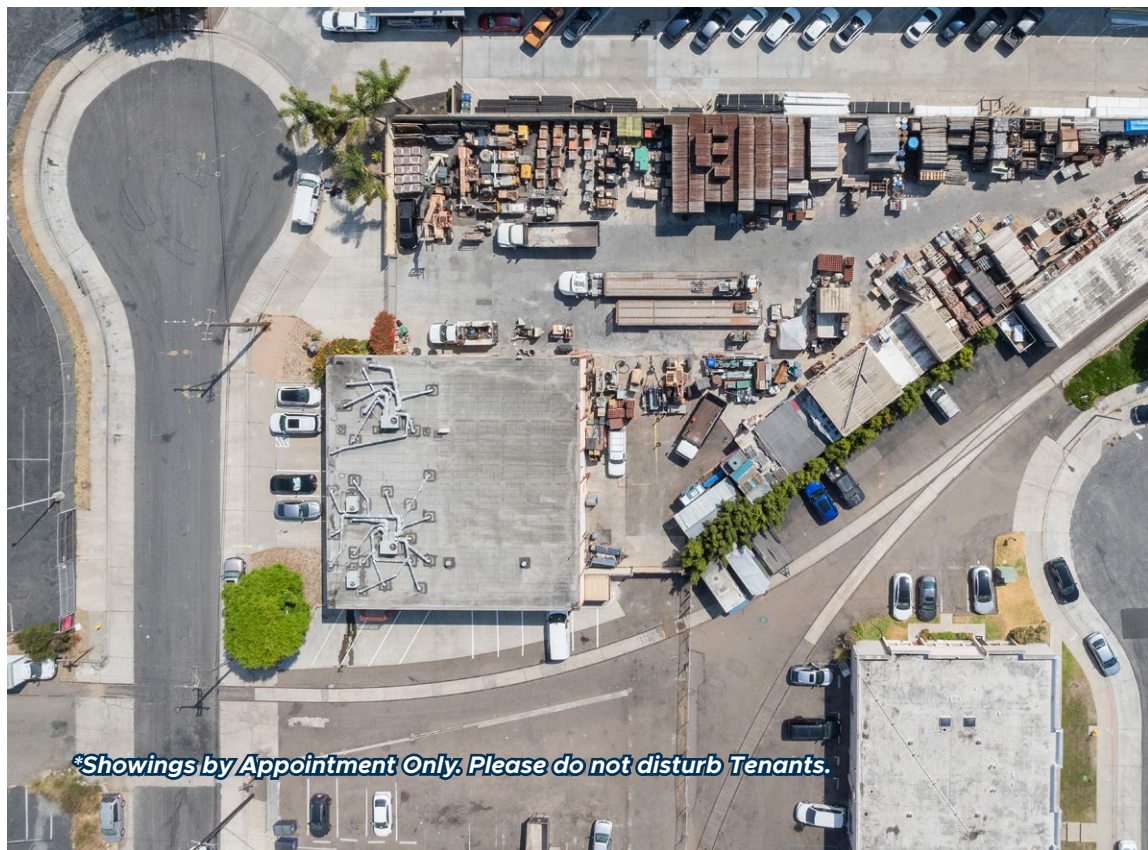
San Diego/Morena Boulevard

## DELIVERABILITY

Month to month leases are in place. The property can be delivered vacant with 60-90 days notice

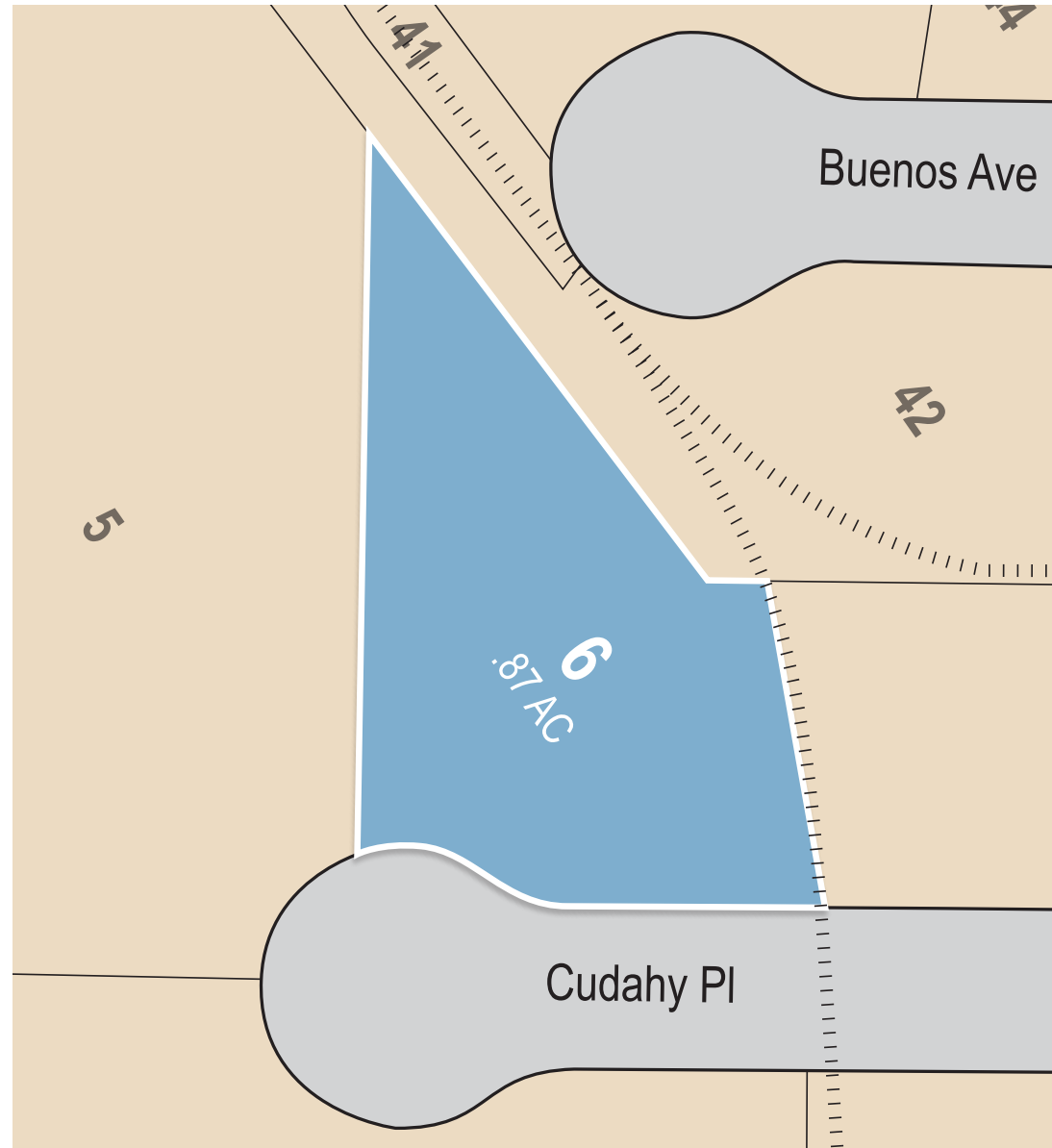
## SALE PRICE

\$5,200,000

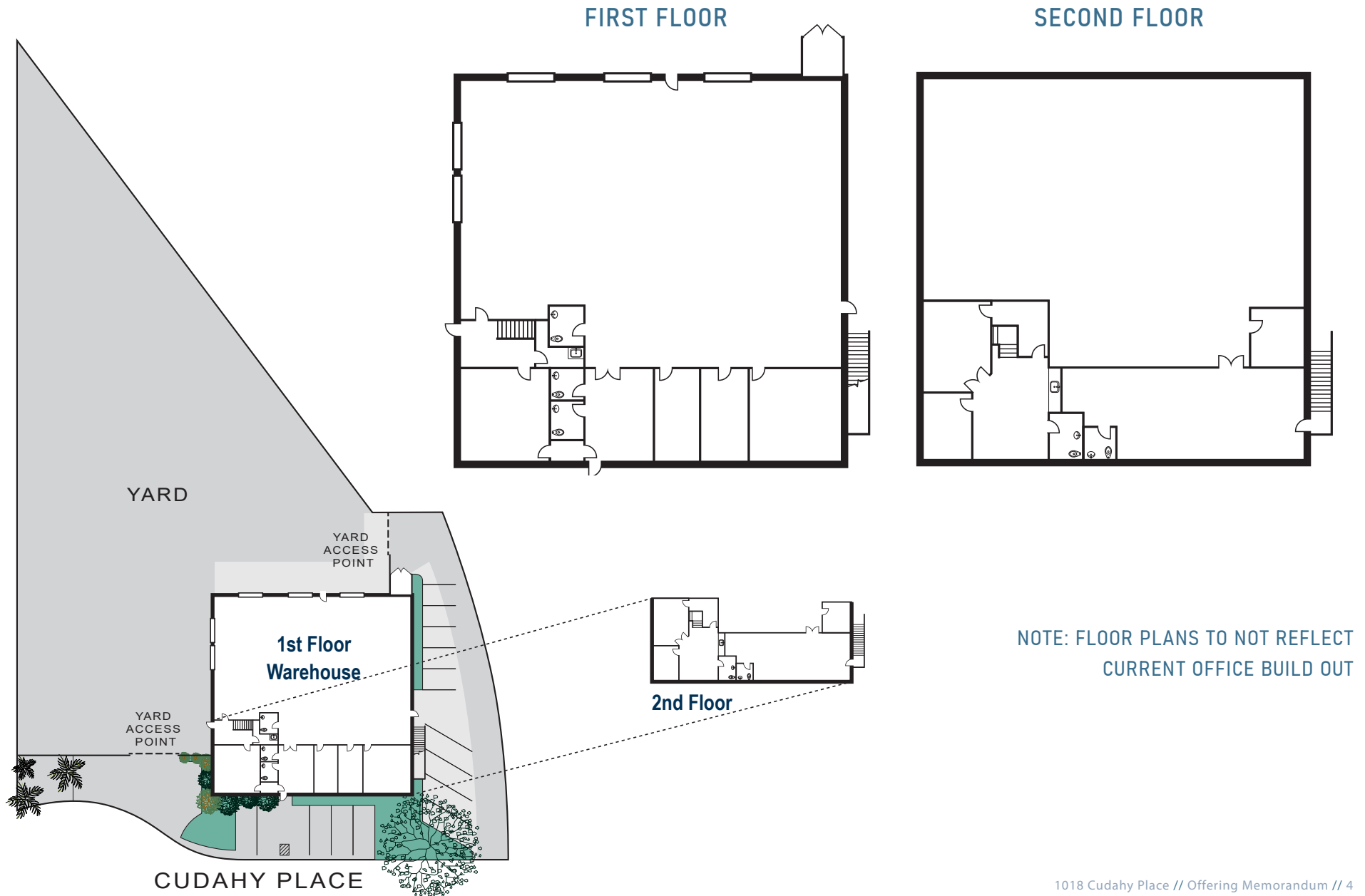


*\*Showings by Appointment Only. Please do not disturb Tenants.*

# PARCEL MAP



# SITE & FLOOR PLANS





# CENTRAL COUNTY LOCATION - EXCELLENT FREE-





# AVAILABLE FOR SALE

## 1018 CUDAHY PLACE, SAN DIEGO, CA 92110



### GLENN ARNOLD

SENIOR VICE PRESIDENT/PARTNER  
LIC. #00953038 | 858.458.3319  
GARNOLD@VOITCO.COM

### RANDY LaCHANCE

EXECUTIVE VICE PRESIDENT  
LIC. #00969674 | 858.458.3374  
RLACHANCE@VOITCO.COM

### MILES ARNOLD

SENIOR ASSOCIATE  
LIC. #02094013 | 858.458.3324  
MARNOLD@VOITCO.COM

# Voit

REAL ESTATE SERVICES

4180 La Jolla Village Drive, Suite 100, La Jolla, CA 92037 • 858.453.0505 • 858.408.3976 Fax • Lic #01991785 • [www.voitco.com](http://www.voitco.com)

Licensed as Real Estate Salespersons by the DRE. The information contained herein has been obtained from sources we deem reliable. While we have no reason to doubt its accuracy, we do not guarantee it. ©2025 Voit Real Estate Services, Inc. All Rights Reserved.