

FLOOR PLANS

1200 & 1300 Summit Avenue | Fort Worth, Texas 76102

SUMMIT OFFICE PARK



Owned by



Leased and Managed by



CONTACT

Vic Meyer | 817.710.1113 | vmeyer@holtlunsford.com
Matt Carthey | 817.710.1111 | mcarthey@holtlunsford.com
Reilly Clark | 817.632.6157 | rclark@holtlunsford.com

This information is deemed reliable, however Holt Lunsford Commercial makes no guarantees, warranties or representation as to the completeness or accuracy thereof.



1200 Summit Avenue | Fort Worth, Texas 76102

SUMMIT OFFICE PARK

CLICK BELOW TO VIEW VIRTUAL TOURS

- [Lobby Renovations](#)
- [Amenities](#)
- [Spec Floor](#)

BUILDING

- Twin-building, mid-rise (8-story), 242,482 SF office development
- Constructed in 1974, renovated in 2008, 2012, 2019 and situated on 9 acres of newly-landscaped grounds

LOCATION

- Located on the perimeter of the Fort Worth CBD
- Summit Avenue just North of Interstate 30
- Close to the medical, cultural and West 7th districts with immediate access to Interstate 30 and the New Chisholm Trail Parkway

PARKING

- 881 parking spaces, including 599 spaces in the 3-story parking garage which is connected between the two towers
- Parking ratio of 3.65/1000

AMENITIES

- Full-service deli
- Fitness center
- Touch-screen directory
- Flat-screen televisions in elevator lobbies
- 24-hour surveillance
- Secure building access after business hours
- On-site property management and engineering teams

NEW CAPITAL IMPROVEMENTS

- New exterior paint
- New building lobbies
- Conference and training facilities
- Tenant lounge
- Expanded deli



Owned by



Leased and Managed by



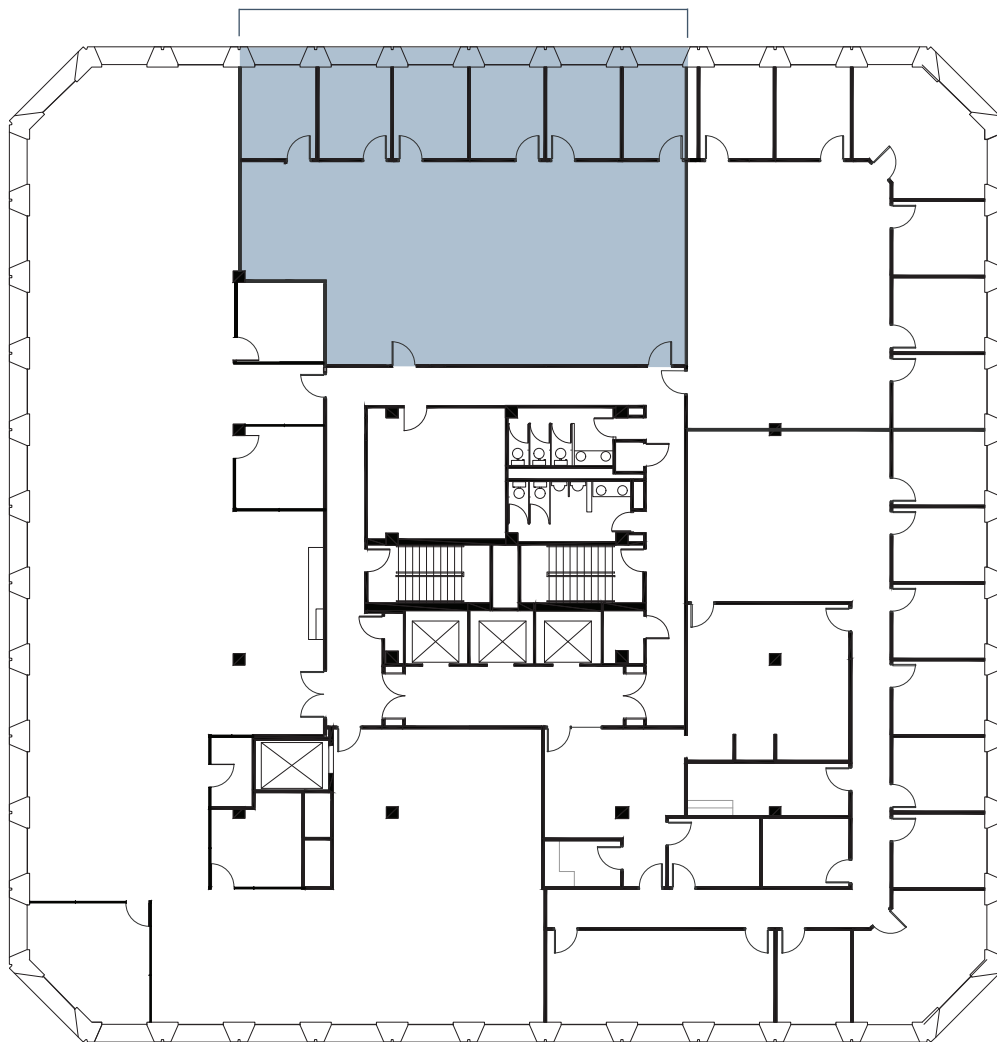
CONTACT

Vic Meyer | 817.710.1113 | vmeyer@holtlunsford.com
 Matt Carthey | 817.710.1111 | mcarthey@holtlunsford.com
 Reilly Clark | 817.632.6157 | rclark@holtlunsford.com



Floor 2

SUITE 220
2,515 SF



Owned by



Leased and Managed by

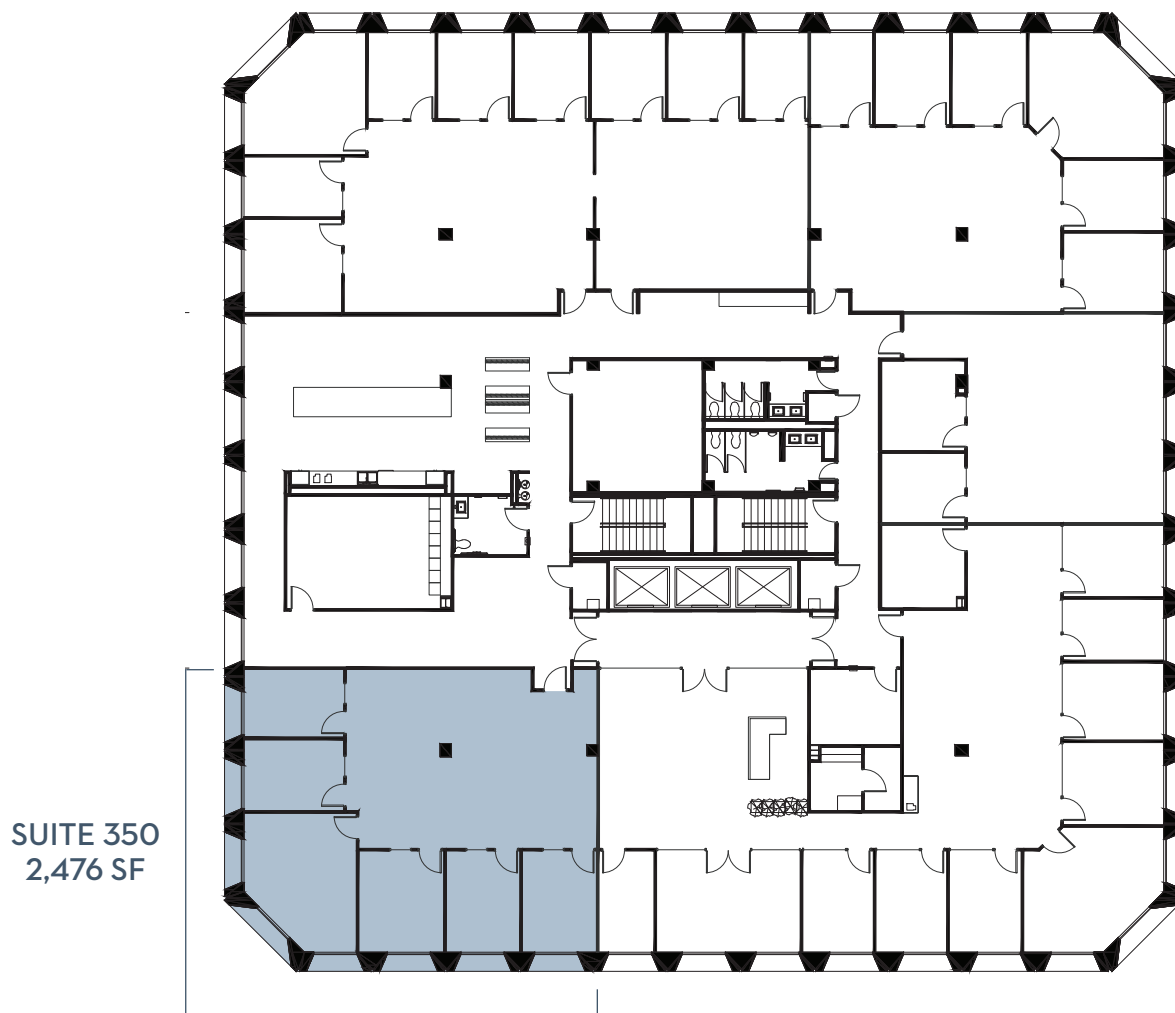


CONTACT

Vic Meyer | 817.710.1113 | vmeyer@holtlunsford.com
Matt Carthey | 817.710.1111 | mcarthey@holtlunsford.com
Reilly Clark | 817.632.6157 | rclark@holtlunsford.com



Floor 3



Owned by

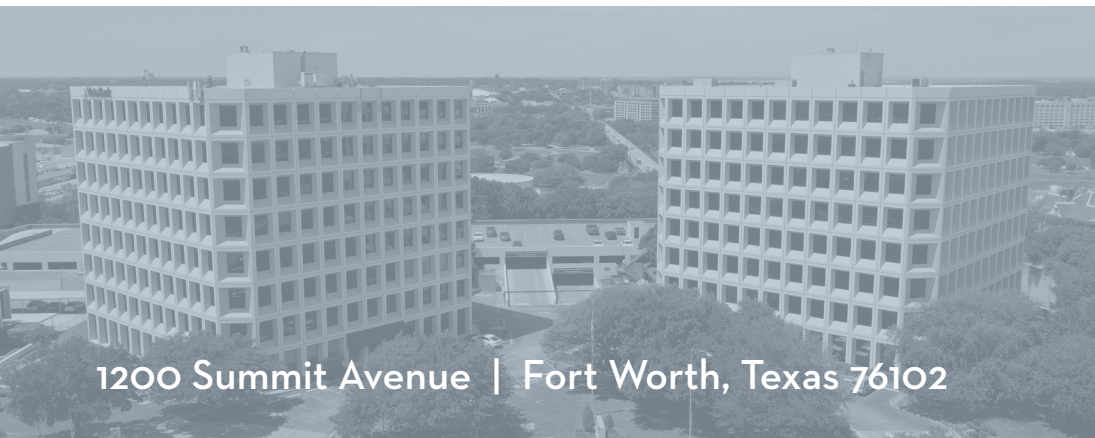


Leased and Managed by



CONTACT

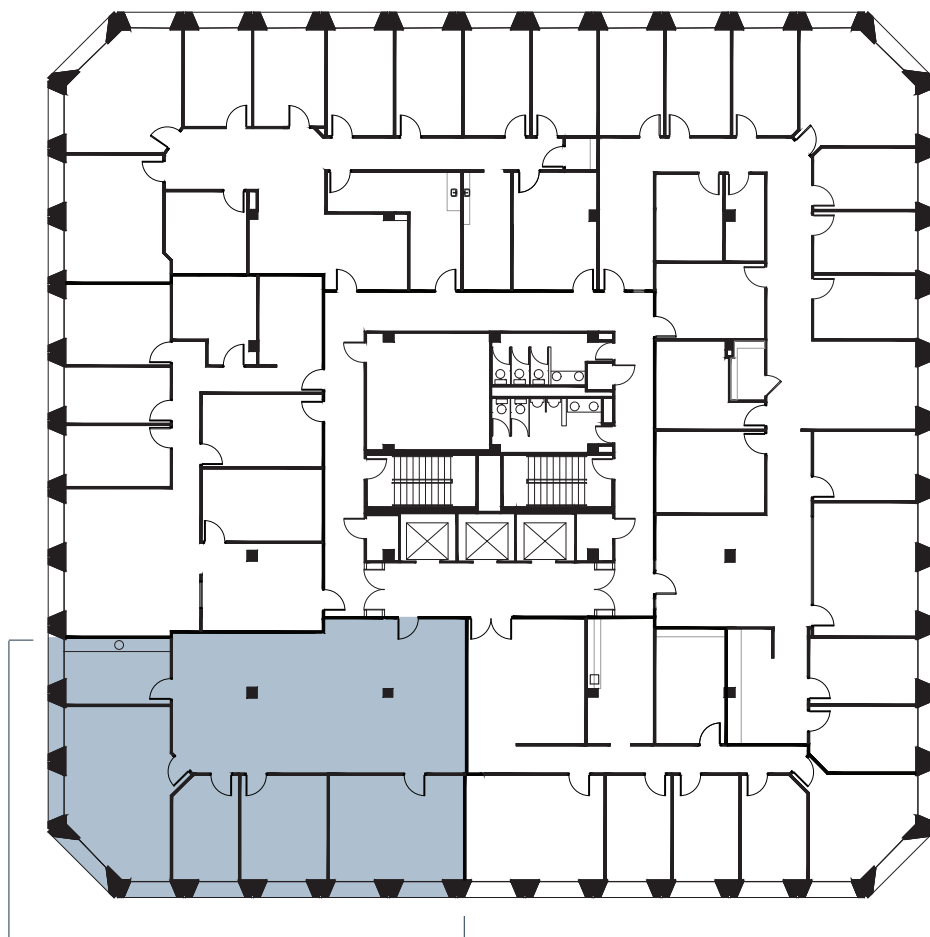
Vic Meyer | 817.710.1113 | vmeyer@holtlunsford.com
Matt Carthey | 817.710.1111 | mcarthey@holtlunsford.com
Reilly Clark | 817.632.6157 | rclark@holtlunsford.com



1200 Summit Avenue | Fort Worth, Texas 76102

SUMMIT OFFICE PARK

Floor 5



SUITE 500 | 2,491 SF

Owned by



Leased and Managed by



CONTACT

Vic Meyer | 817.710.1113 | vmeyer@holtlunsford.com
Matt Carthey | 817.710.1111 | mcarthey@holtlunsford.com
Reilly Clark | 817.632.6157 | rclark@holtlunsford.com

This information is deemed reliable, however Holt Lunsford Commercial makes no guarantees, warranties or representation as to the completeness or accuracy thereof.



1200 Summit Avenue | Fort Worth, Texas 76102

SUMMIT OFFICE PARK

Floor 7



Owned by



Leased and Managed by



CONTACT

Vic Meyer | 817.710.1113 | vmeyer@holtlunsford.com
Matt Carthey | 817.710.1111 | mcarthey@holtlunsford.com
Reilly Clark | 817.632.6157 | rclark@holtlunsford.com

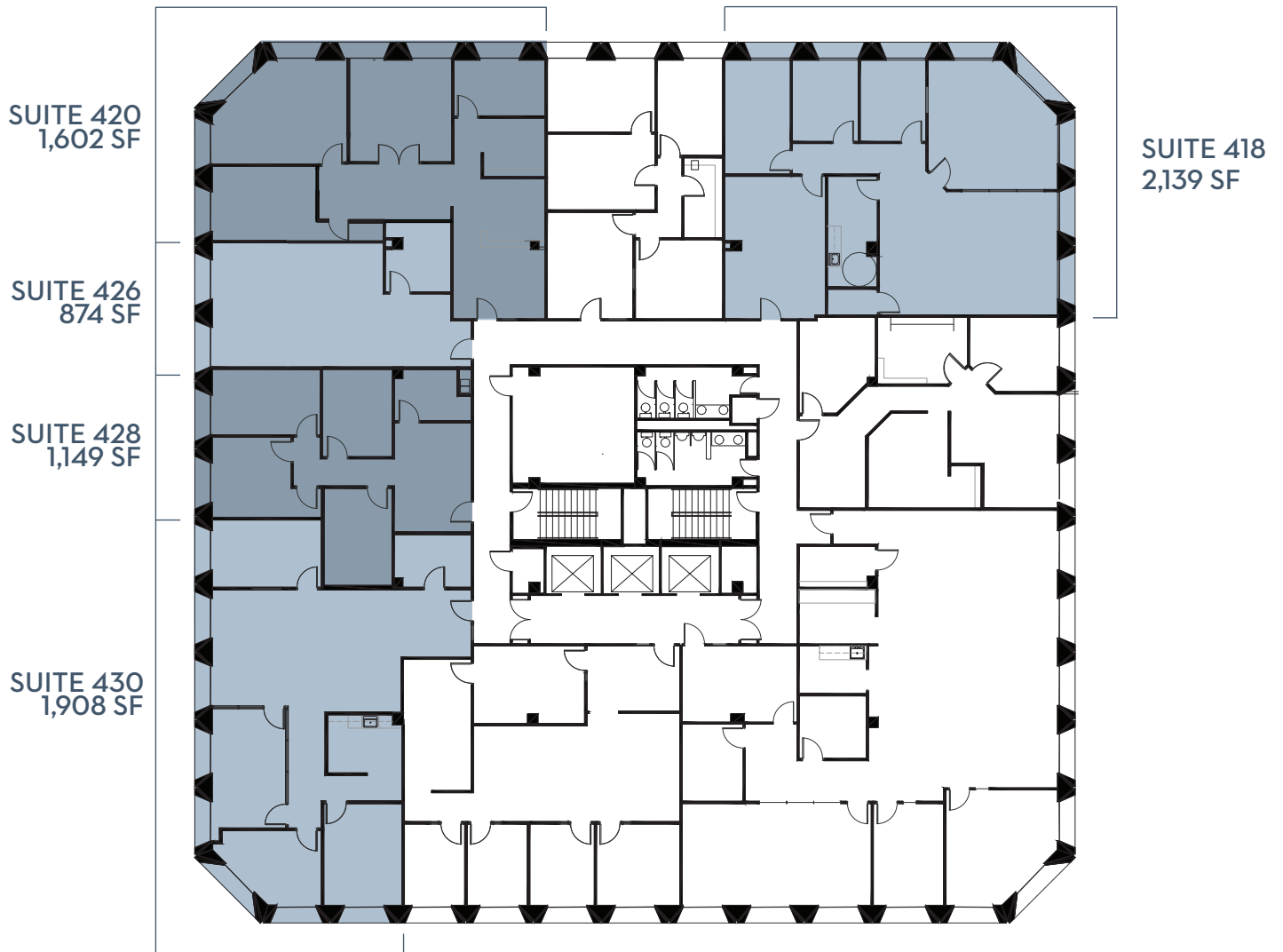


1300 Summit Avenue | Fort Worth, Texas 76102

SUMMIT OFFICE PARK

Floor 4

420, 426, 428, AND 430
CONTIGUOUS
5,533 SF



Owned by



Leased and Managed by



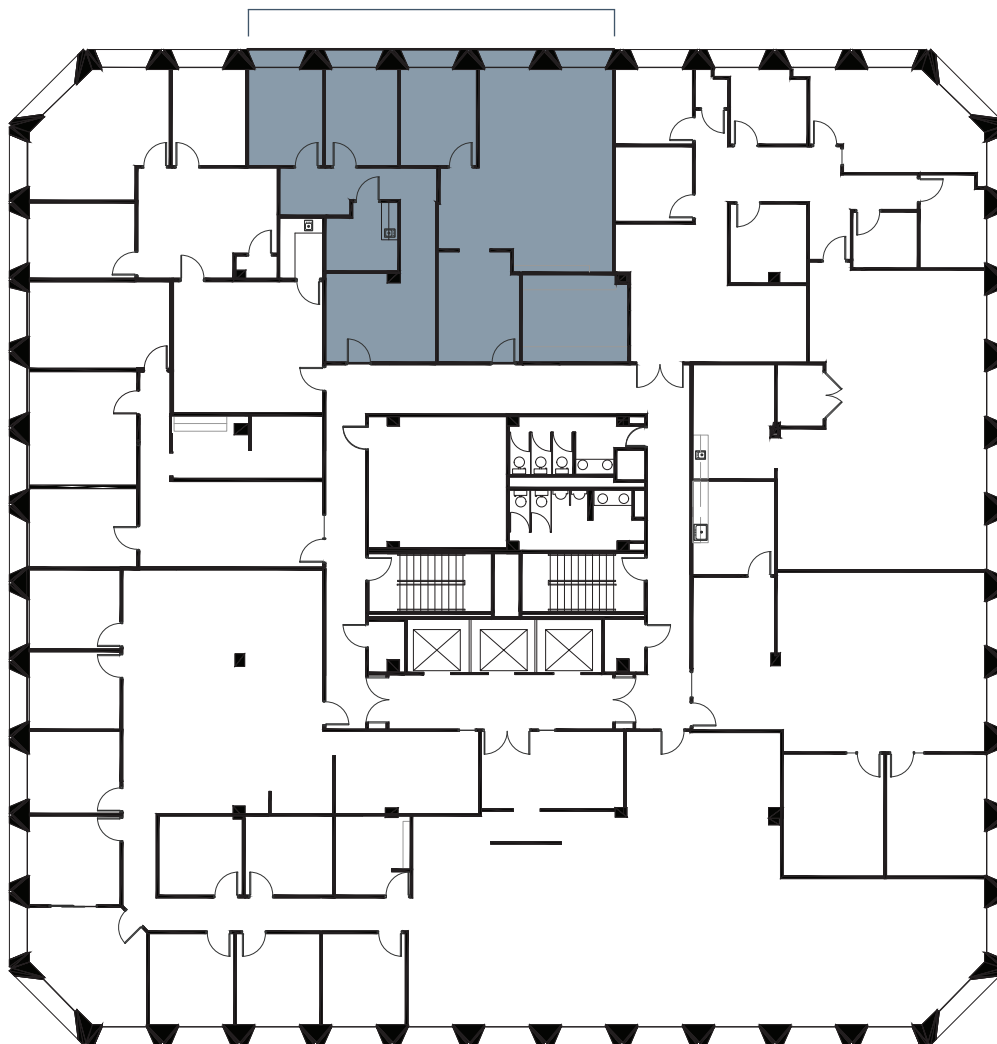
CONTACT

Vic Meyer | 817.710.1113 | vmeyer@holtlunsford.com
Matt Carthey | 817.710.1111 | mcarthey@holtlunsford.com
Reilly Clark | 817.632.6157 | rclark@holtlunsford.com



Floor 5

SUITE 514
1,874 SF



Owned by



Leased and Managed by



CONTACT

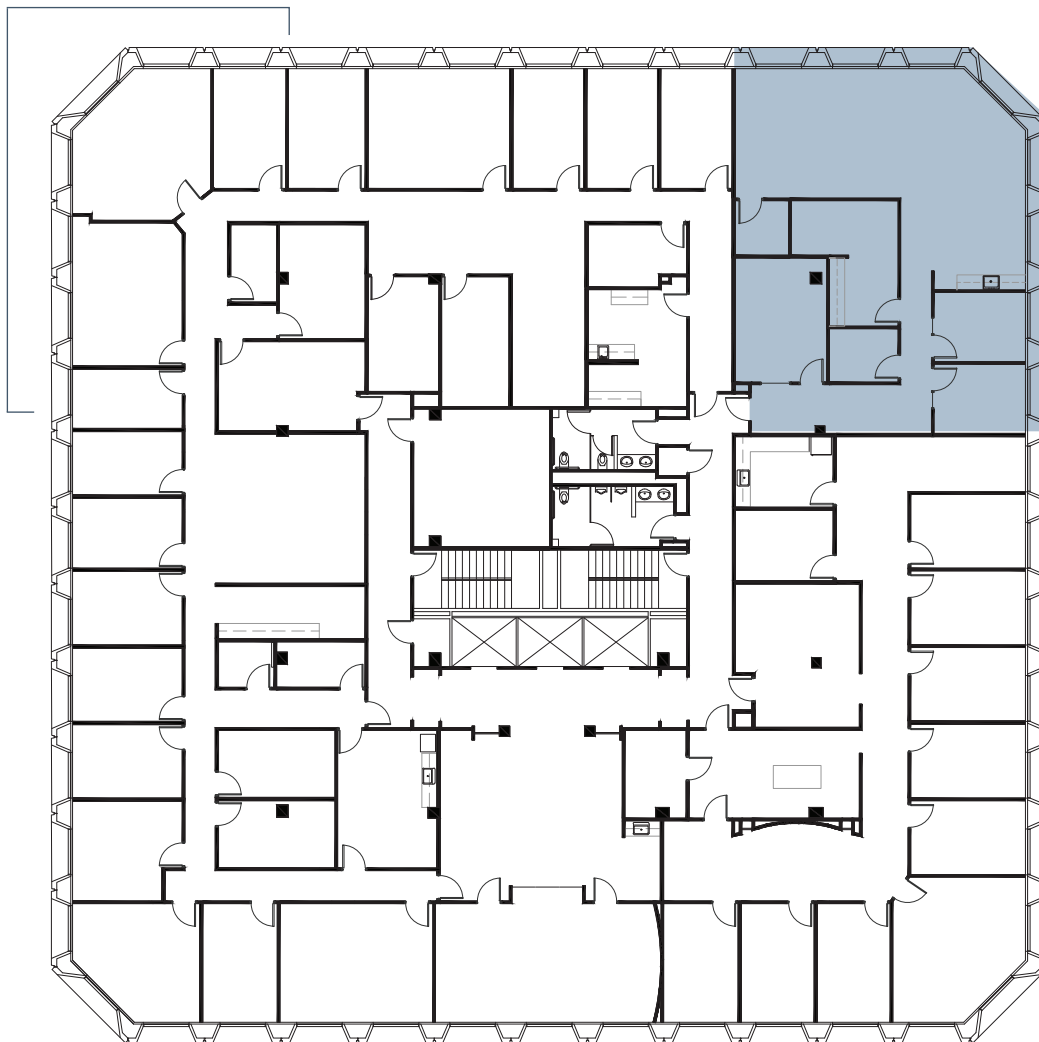
Vic Meyer | 817.710.1113 | vmeyer@holtlunsford.com
Matt Carthey | 817.710.1111 | mcarthey@holtlunsford.com
Reilly Clark | 817.632.6157 | rclark@holtlunsford.com



1300 Summit Avenue | Fort Worth, Texas 76102

SUMMIT OFFICE PARK

Floor 6



SUITE 625
2,069 SF

Owned by



Leased and Managed by



CONTACT

Vic Meyer | 817.710.1113 | vmeyer@holtlunsford.com
Matt Carthey | 817.710.1111 | mcarthey@holtlunsford.com
Reilly Clark | 817.632.6157 | rclark@holtlunsford.com



Information About Brokerage Services

Texas law requires all real estate license holders to give the following information about brokerage services to prospective buyers, tenants, sellers and landlords.

2-10-2025



TYPES OF REAL ESTATE LICENSE HOLDERS:

- **A BROKER** is responsible for all brokerage activities, including acts performed by sales agents sponsored by the broker.
- **A SALES AGENT** must be sponsored by a broker and works with clients on behalf of the broker.

A BROKER'S MINIMUM DUTIES REQUIRED BY LAW (A client is the person or party that the broker represents):

- Put the interests of the client above all others, including the broker's own interests;
- Inform the client of any material information about the property or transaction received by the broker;
- Answer the client's questions and present any offer to or counter-offer from the client; and
- Treat all parties to a real estate transaction honestly and fairly.

A LICENSE HOLDER CAN REPRESENT A PARTY IN A REAL ESTATE TRANSACTION:

AS AGENT FOR OWNER (SELLER/LANDLORD): The broker becomes the property owner's agent through an agreement with the owner, usually in a written listing to sell or property management agreement. An owner's agent must perform the broker's minimum duties above and must inform the owner of any material information about the property or transaction known by the agent, including information disclosed to the agent or subagent by the buyer or buyer's agent. **An owner's agent fees are not set by law and are fully negotiable.**

AS AGENT FOR BUYER/TENANT: The broker becomes the buyer/tenant's agent by agreeing to represent the buyer, usually through a written representation agreement. A buyer's agent must perform the broker's minimum duties above and must inform the buyer of any material information about the property or transaction known by the agent, including information disclosed to the agent by the seller or seller's agent. **A buyer/tenant's agent fees are not set by law and are fully negotiable.**

AS AGENT FOR BOTH - INTERMEDIARY: To act as an intermediary between the parties the broker must first obtain the written agreement of *each party* to the transaction. The written agreement must state who will pay the broker and, in conspicuous bold or underlined print, set forth the broker's obligations as an intermediary. A broker who acts as an intermediary:

- Must treat all parties to the transaction impartially and fairly;
- May, with the parties' written consent, appoint a different license holder associated with the broker to each party (owner and buyer) to communicate with, provide opinions and advice to, and carry out the instructions of each party to the transaction.
- Must not, unless specifically authorized in writing to do so by the party, disclose:
 - that the owner will accept a price less than the written asking price;
 - that the buyer/tenant will pay a price greater than the price submitted in a written offer; and
 - any confidential information or any other information that a party specifically instructs the broker in writing not to disclose, unless required to do so by law.

AS SUBAGENT: A license holder acts as a subagent when aiding a buyer in a transaction without an agreement to represent the buyer. A subagent can assist the buyer but does not represent the buyer and must place the interests of the owner first.

TO AVOID DISPUTES, ALL AGREEMENTS BETWEEN YOU AND A BROKER SHOULD BE IN WRITING AND CLEARLY ESTABLISH:

- The broker's duties and responsibilities to you, and your obligations under the representation agreement.
- Who will pay the broker for services provided to you, when payment will be made and how the payment will be calculated.

LICENSE HOLDER CONTACT INFORMATION: This notice is being provided for information purposes. It does not create an obligation for you to use the broker's services. Please acknowledge receipt of this notice below and retain a copy for your records.

<u>Holt Lunsford Commercial, Inc.</u>	<u>359505</u>	<u>hlunsford@holtlunsford.com</u>	<u>972.241.8300</u>
Licensed Broker /Broker Firm Name or Primary Assumed Business Name	License No.	Email	Phone
<u>Mario Zandstra</u>	<u>312827</u>	<u>mzandstra@holtlunsford.com</u>	<u>972.241.8300</u>
Designated Broker of Firm	License No.	Email	Phone
<u></u>	<u></u>	<u></u>	<u></u>
Licensed Supervisor of Sales Agent/ Associate	License No.	Email	Phone
<u></u>	<u></u>	<u></u>	<u></u>
Sales Agent/Associate's Name	License No.	Email	Phone

Buyer/Tenant/Seller/Landlord Initials

Date