

ROCKY MOUNTAIN EYE CENTER

4400 South 700 East, Murray, UT 84107

PROPERTY DESCRIPTION:

- Located on Highly Trafficked 700 East
- Abundant Parking Ratio of 4.7 Stalls/1,000 SF
- General or Medical Office Users
- Close Proximity to I-15 and I-215 Freeway Access Points
- Well Kept Property Grounds and Common Areas
- Competitive Full Service Lease Rate (Excl. Interior Janitorial)
- T.I. Available for Qualified Tenants

LEASE RATE:

\$21.50 SF/YR
(FULL SERVICE)

PROPERTY DETAILS:

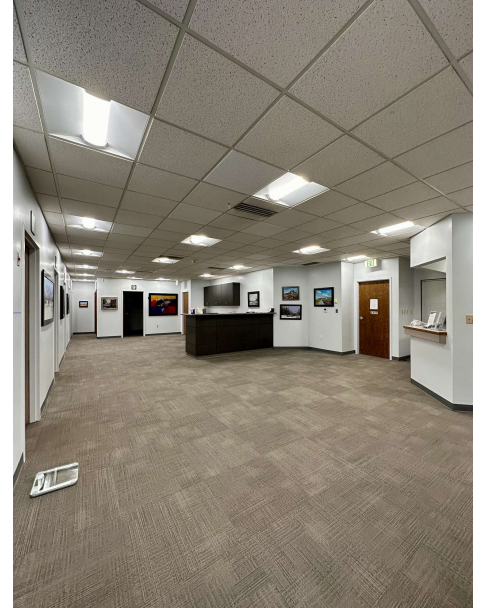
SUITE 240: 4,710 SF

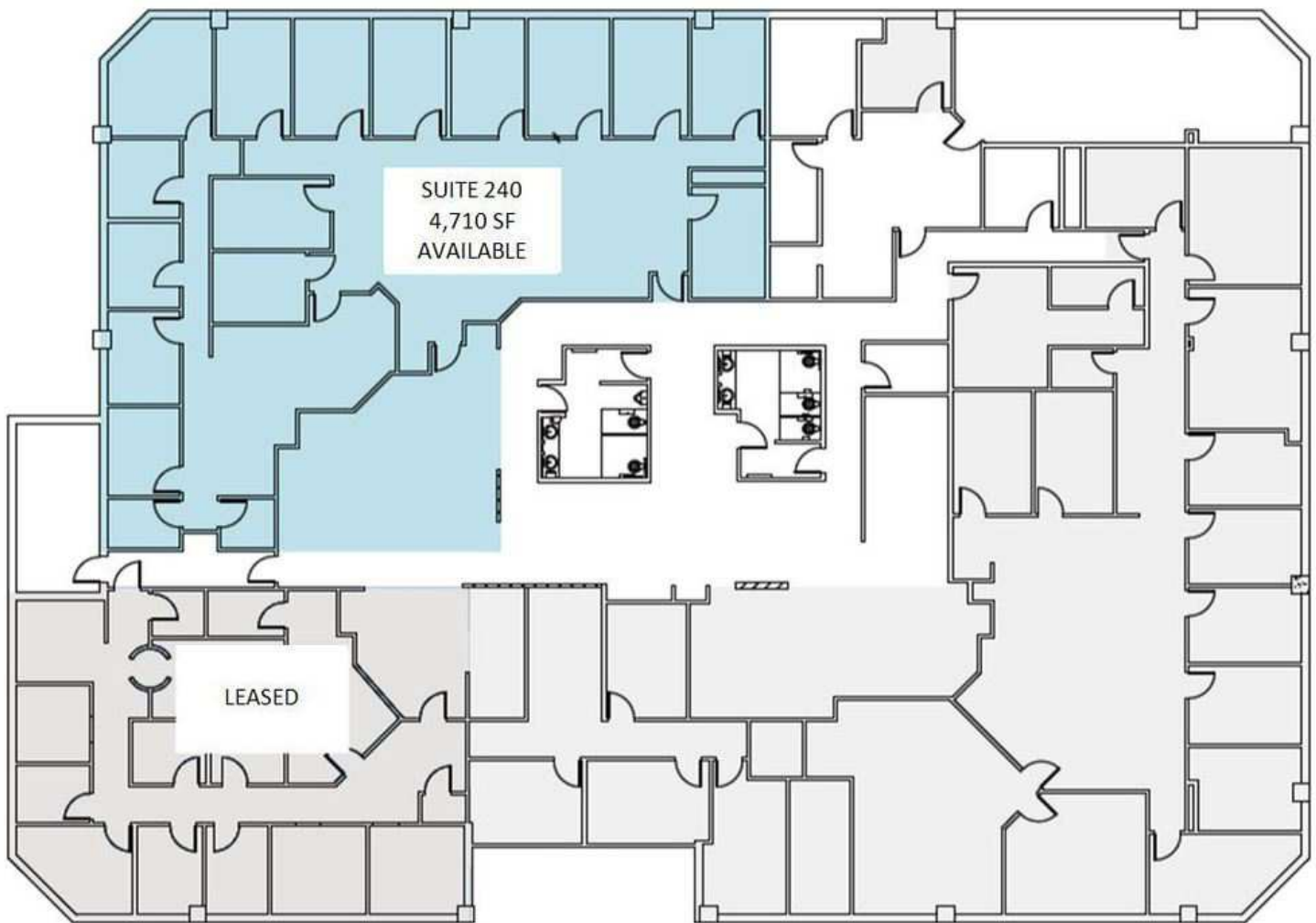
CHRIS METOS
801.879.7870
chris@iproperties.com

JAMES BURGESS
801.916.5457
james@theburgessco.com

51 East 400 South Suite 210
Salt Lake City, UT 84111
801.355.0600 | iproperties.com









CHRIS METOS
801.879.7870
chris@iproperties.com

JAMES BURGESS
801.916.5457
james@theburgessco.com

51 East 400 South Suite 210
Salt Lake City, UT 84111
801.355.0600 | iproperties.com