

# MIDDLE SCHOOL COMMUNITY CHARTER SCHOOL OF PATERSON 137 ELLISON STREET PATERSON, NJ 07501 PROJECT NUMBER: 2013-278

## Building Analysis

Existing Building  
Scope of Work is limited to Repairs throughout the building and minor Alterations on First Floor Only.  
Current Use - "E" - Education  
Proposed Use - "E" - Education  
Construction Type: IIB  
Sprinklered: Yes, X No, \_\_\_

Useable Building Area	Occupant Load by Floor (See Egress Plans below)
1st Floor 6,250 SF	191 Occ
2nd Floor 6,250 SF	164 Occ
3rd Floor 6,250 SF	125 Occ
4th Floor 6,250 SF	125 Occ
<b>Total</b> 25,000 SF	<b>626 Occupants</b>

Anticipated Enrollment: 400 Students

Egress Component  
Stairways (includes per occupant): 647/2 = 180 occupants  
Other Egress Components: 357/2 = 180 occupants  
Total: 72/2 = 360 occupants

Travel Distance to Exit Access  
With Sprinkler System: 250 feet

## Plumbing Fixture Count

REQUIRED	W/C	LAVS	FOUNTAIN SINKS	SERVICE
WOMEN 1-30	1	2	1/100	1-FLR
MEN 31-60	1	1		
UNISEX 61-90	1	1		
MEH 1-30	1	1		
31-60	1	1		
61-90	1	1		
UNISEX 91-120	4	5		
PROPOSED				
1ST FLR	W/C	LAVS	FOUNTAIN SINKS	SERVICE
MEN 95	4	2	1	1
WOMEN 95	4	1		
UNISEX 95	4	3	1	1
MEN 73	4	2		
WOMEN 73	4	1		
UNISEX 73	4	3	1	1
MEN 60	4	1		
WOMEN 60	4	2		
UNISEX 60	4	2	1	1
MEN 47	4	2		
WOMEN 47	4	1		
UNISEX 47	4	2	1	1

## Applicable Codes

UNIFORM CONSTRUCTION CODE (N.J.A.C. 5:23)  
2005 NATIONAL ELECTRICAL CODE  
2006 NATIONAL STANDARD PLUMBING CODE  
2006 NATIONAL STANDARD MECHANICAL CODE  
2006 INTERNATIONAL ENERGY CONSERVATION CODE  
2006 INTERNATIONAL MECHANICAL CODE  
2006 INTERNATIONAL FUEL GAS CODE  
2006 INTERNATIONAL FIRE AND MARINE BOAT CODE (N.J.A.C. 5:24)  
BARBER FREE SHUB CODE  
ANSI A117.1-2003

## Drawing Index

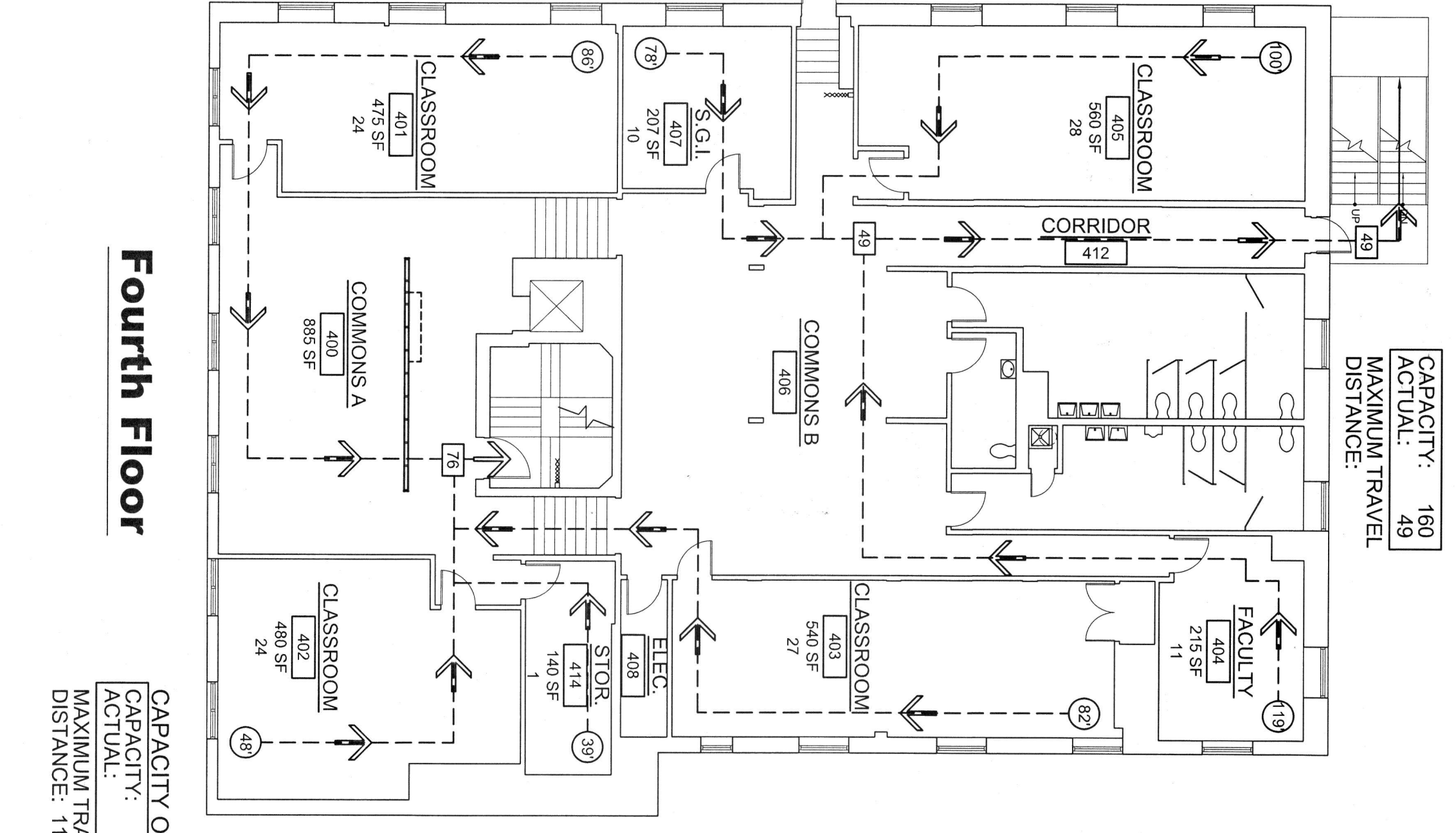
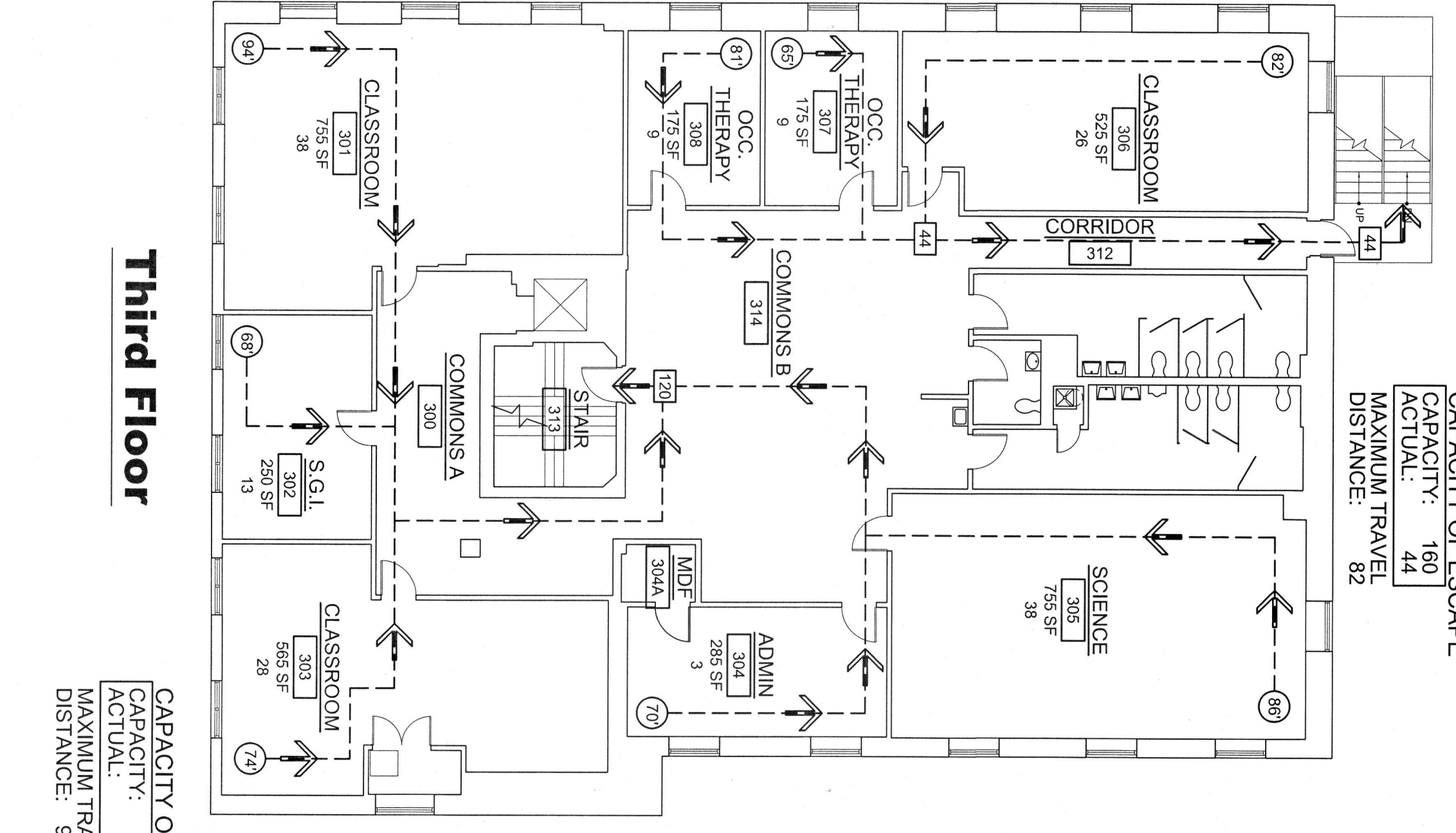
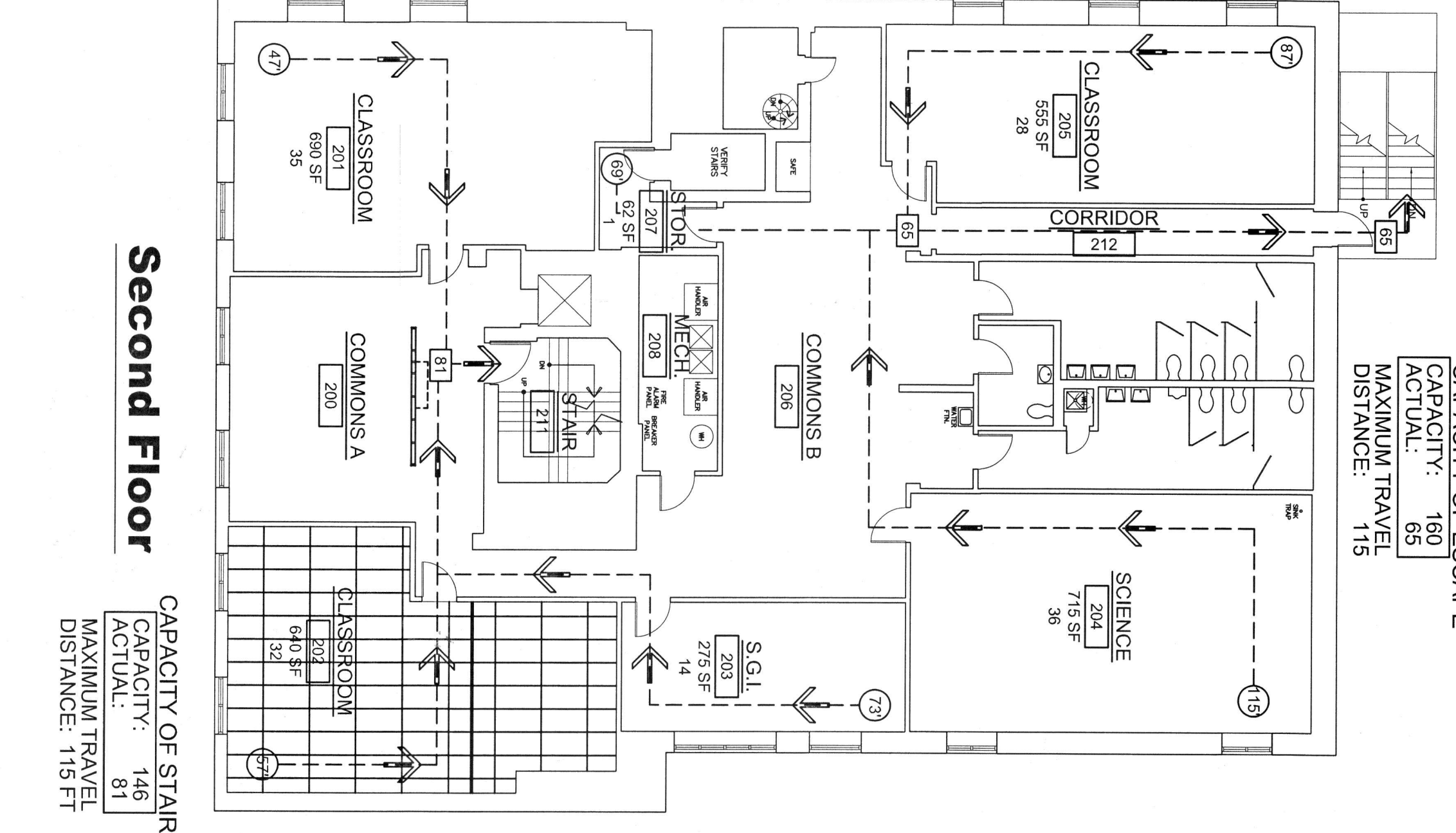
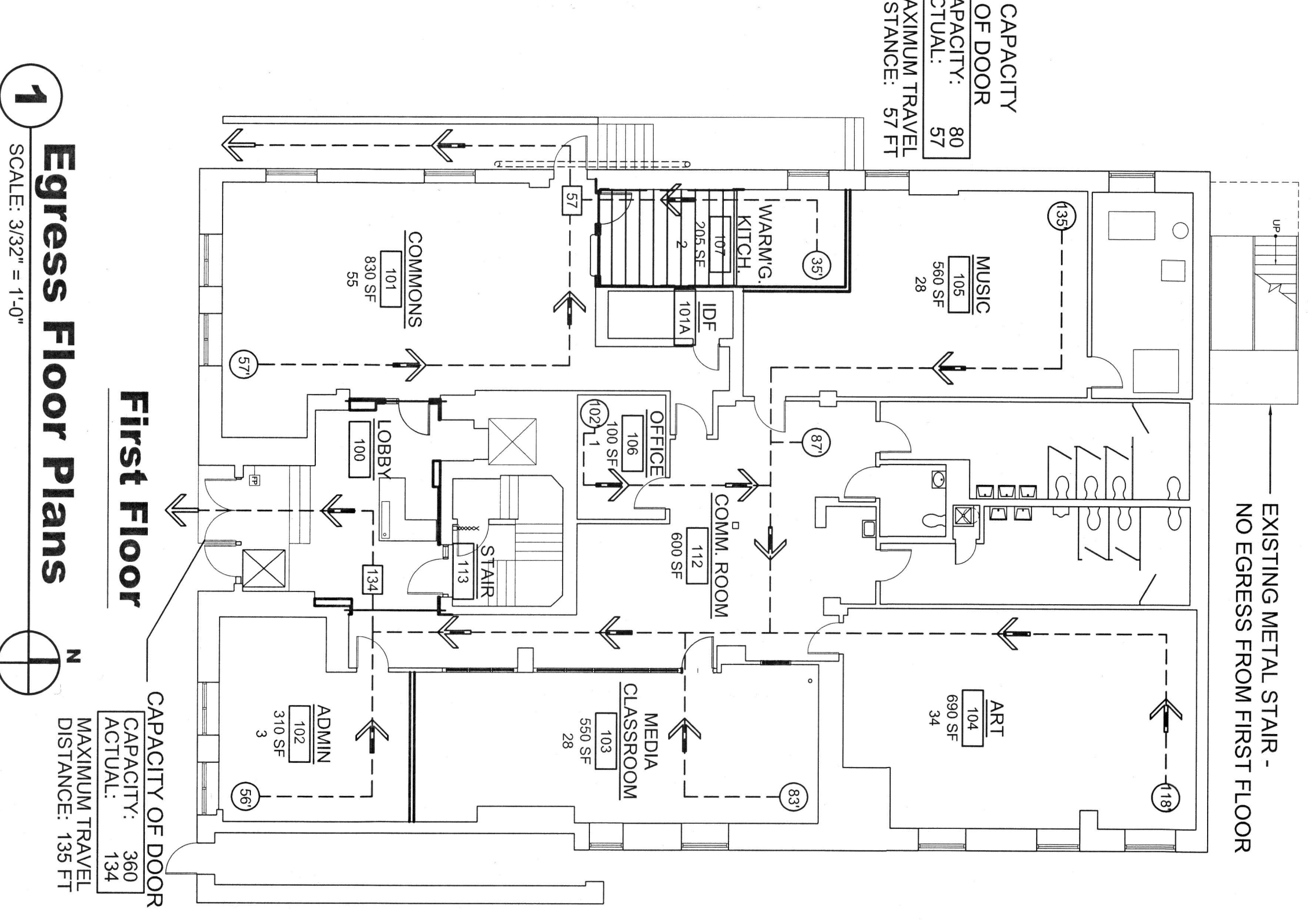
ARCHITECTURAL	MECHANICAL
A001 TITLE SHEET AND CODE INFORMATION A100 FIRST FLOOR & SECOND FLOOR DEMOLITION PLANS A101 RESTROOM AND ROOF PLANS A102 MECHANICAL SCHEDULES & DETAILS A103 MECHANICAL SCHEDULES & DETAILS A104 THIRD AND FOURTH FLOOR PLANS A105 MECHANICAL SCHEDULES & DETAILS A106 MECHANICAL SCHEDULES & DETAILS A107 MECHANICAL SCHEDULES & DETAILS A108 MECHANICAL SCHEDULES & DETAILS A109 MECHANICAL SCHEDULES & DETAILS A110 MECHANICAL SCHEDULES & DETAILS A111 MECHANICAL SCHEDULES & DETAILS A112 MECHANICAL SCHEDULES & DETAILS A113 MECHANICAL SCHEDULES & DETAILS A114 MECHANICAL SCHEDULES & DETAILS A115 MECHANICAL SCHEDULES & DETAILS A116 MECHANICAL SCHEDULES & DETAILS A117 MECHANICAL SCHEDULES & DETAILS A118 MECHANICAL SCHEDULES & DETAILS A119 MECHANICAL SCHEDULES & DETAILS A120 MECHANICAL SCHEDULES & DETAILS A121 MECHANICAL SCHEDULES & DETAILS A122 MECHANICAL SCHEDULES & DETAILS A123 MECHANICAL SCHEDULES & DETAILS A124 MECHANICAL SCHEDULES & DETAILS A125 MECHANICAL SCHEDULES & DETAILS A126 MECHANICAL SCHEDULES & DETAILS A127 MECHANICAL SCHEDULES & DETAILS A128 MECHANICAL SCHEDULES & DETAILS A129 MECHANICAL SCHEDULES & DETAILS A130 MECHANICAL SCHEDULES & DETAILS A131 MECHANICAL SCHEDULES & DETAILS A132 MECHANICAL SCHEDULES & DETAILS A133 MECHANICAL SCHEDULES & DETAILS A134 MECHANICAL SCHEDULES & DETAILS A135 MECHANICAL SCHEDULES & DETAILS A136 MECHANICAL SCHEDULES & DETAILS A137 MECHANICAL SCHEDULES & DETAILS A138 MECHANICAL SCHEDULES & DETAILS A139 MECHANICAL SCHEDULES & DETAILS A140 MECHANICAL SCHEDULES & DETAILS A141 MECHANICAL SCHEDULES & DETAILS A142 MECHANICAL SCHEDULES & DETAILS A143 MECHANICAL SCHEDULES & DETAILS A144 MECHANICAL SCHEDULES & DETAILS A145 MECHANICAL SCHEDULES & DETAILS A146 MECHANICAL SCHEDULES & DETAILS A147 MECHANICAL SCHEDULES & DETAILS A148 MECHANICAL SCHEDULES & DETAILS A149 MECHANICAL SCHEDULES & DETAILS A150 MECHANICAL SCHEDULES & DETAILS A151 MECHANICAL SCHEDULES & DETAILS A152 MECHANICAL SCHEDULES & DETAILS A153 MECHANICAL SCHEDULES & DETAILS A154 MECHANICAL SCHEDULES & DETAILS A155 MECHANICAL SCHEDULES & DETAILS A156 MECHANICAL SCHEDULES & DETAILS A157 MECHANICAL SCHEDULES & DETAILS A158 MECHANICAL SCHEDULES & DETAILS A159 MECHANICAL SCHEDULES & DETAILS A160 MECHANICAL SCHEDULES & DETAILS A161 MECHANICAL SCHEDULES & DETAILS A162 MECHANICAL SCHEDULES & DETAILS A163 MECHANICAL SCHEDULES & DETAILS A164 MECHANICAL SCHEDULES & DETAILS A165 MECHANICAL SCHEDULES & DETAILS A166 MECHANICAL SCHEDULES & DETAILS A167 MECHANICAL SCHEDULES & DETAILS A168 MECHANICAL SCHEDULES & DETAILS A169 MECHANICAL SCHEDULES & DETAILS A170 MECHANICAL SCHEDULES & DETAILS A171 MECHANICAL SCHEDULES & DETAILS A172 MECHANICAL SCHEDULES & DETAILS A173 MECHANICAL SCHEDULES & DETAILS A174 MECHANICAL SCHEDULES & DETAILS A175 MECHANICAL SCHEDULES & DETAILS A176 MECHANICAL SCHEDULES & DETAILS A177 MECHANICAL SCHEDULES & DETAILS A178 MECHANICAL SCHEDULES & DETAILS A179 MECHANICAL SCHEDULES & DETAILS A180 MECHANICAL SCHEDULES & DETAILS A181 MECHANICAL SCHEDULES & DETAILS A182 MECHANICAL SCHEDULES & DETAILS A183 MECHANICAL SCHEDULES & DETAILS A184 MECHANICAL SCHEDULES & DETAILS A185 MECHANICAL SCHEDULES & DETAILS A186 MECHANICAL SCHEDULES & DETAILS A187 MECHANICAL SCHEDULES & DETAILS A188 MECHANICAL SCHEDULES & DETAILS A189 MECHANICAL SCHEDULES & DETAILS A190 MECHANICAL SCHEDULES & DETAILS A191 MECHANICAL SCHEDULES & DETAILS A192 MECHANICAL SCHEDULES & DETAILS A193 MECHANICAL SCHEDULES & DETAILS A194 MECHANICAL SCHEDULES & DETAILS A195 MECHANICAL SCHEDULES & DETAILS A196 MECHANICAL SCHEDULES & DETAILS A197 MECHANICAL SCHEDULES & DETAILS A198 MECHANICAL SCHEDULES & DETAILS A199 MECHANICAL SCHEDULES & DETAILS A200 MECHANICAL SCHEDULES & DETAILS	E000 ELECTRICAL INFORMATION SHEET E100 FIRST FLOOR LIGHTING & POWER PLANS E200 SECOND, THIRD & FOURTH FLOOR & ROOF POWER PLANS E300 ELECTRICAL SCHEDULES, WIRING & DETAILS E400 ELECTRICAL SCHEDULES, WIRING & DETAILS E500 ELECTRICAL SCHEDULES, WIRING & DETAILS E600 ELECTRICAL SCHEDULES, WIRING & DETAILS E700 ELECTRICAL SCHEDULES, WIRING & DETAILS E800 ELECTRICAL SCHEDULES, WIRING & DETAILS E900 ELECTRICAL SCHEDULES, WIRING & DETAILS E1000 ELECTRICAL SCHEDULES, WIRING & DETAILS E1100 ELECTRICAL SCHEDULES, WIRING & DETAILS E1200 ELECTRICAL SCHEDULES, WIRING & DETAILS E1300 ELECTRICAL SCHEDULES, WIRING & DETAILS E1400 ELECTRICAL SCHEDULES, WIRING & DETAILS E1500 ELECTRICAL SCHEDULES, WIRING & DETAILS E1600 ELECTRICAL SCHEDULES, WIRING & DETAILS E1700 ELECTRICAL SCHEDULES, WIRING & DETAILS E1800 ELECTRICAL SCHEDULES, WIRING & DETAILS E1900 ELECTRICAL SCHEDULES, WIRING & DETAILS E2000 ELECTRICAL SCHEDULES, WIRING & DETAILS E2100 ELECTRICAL SCHEDULES, WIRING & DETAILS E2200 ELECTRICAL SCHEDULES, WIRING & DETAILS E2300 ELECTRICAL SCHEDULES, WIRING & DETAILS E2400 ELECTRICAL SCHEDULES, WIRING & DETAILS E2500 ELECTRICAL SCHEDULES, WIRING & DETAILS E2600 ELECTRICAL SCHEDULES, WIRING & DETAILS E2700 ELECTRICAL SCHEDULES, WIRING & DETAILS E2800 ELECTRICAL SCHEDULES, WIRING & DETAILS E2900 ELECTRICAL SCHEDULES, WIRING & DETAILS E3000 ELECTRICAL SCHEDULES, WIRING & DETAILS E3100 ELECTRICAL SCHEDULES, WIRING & DETAILS E3200 ELECTRICAL SCHEDULES, WIRING & DETAILS E3300 ELECTRICAL SCHEDULES, WIRING & DETAILS E3400 ELECTRICAL SCHEDULES, WIRING & DETAILS E3500 ELECTRICAL SCHEDULES, WIRING & DETAILS E3600 ELECTRICAL SCHEDULES, WIRING & DETAILS E3700 ELECTRICAL SCHEDULES, WIRING & DETAILS E3800 ELECTRICAL SCHEDULES, WIRING & DETAILS E3900 ELECTRICAL SCHEDULES, WIRING & DETAILS E4000 ELECTRICAL SCHEDULES, WIRING & DETAILS E4100 ELECTRICAL SCHEDULES, WIRING & DETAILS E4200 ELECTRICAL SCHEDULES, WIRING & DETAILS E4300 ELECTRICAL SCHEDULES, WIRING & DETAILS E4400 ELECTRICAL SCHEDULES, WIRING & DETAILS E4500 ELECTRICAL SCHEDULES, WIRING & DETAILS E4600 ELECTRICAL SCHEDULES, WIRING & DETAILS E4700 ELECTRICAL SCHEDULES, WIRING & DETAILS E4800 ELECTRICAL SCHEDULES, WIRING & DETAILS E4900 ELECTRICAL SCHEDULES, WIRING & DETAILS E5000 ELECTRICAL SCHEDULES, WIRING & DETAILS E5100 ELECTRICAL SCHEDULES, WIRING & DETAILS E5200 ELECTRICAL SCHEDULES, WIRING & DETAILS E5300 ELECTRICAL SCHEDULES, WIRING & DETAILS E5400 ELECTRICAL SCHEDULES, WIRING & DETAILS E5500 ELECTRICAL SCHEDULES, WIRING & DETAILS E5600 ELECTRICAL SCHEDULES, WIRING & DETAILS E5700 ELECTRICAL SCHEDULES, WIRING & DETAILS E5800 ELECTRICAL SCHEDULES, WIRING & DETAILS E5900 ELECTRICAL SCHEDULES, WIRING & DETAILS E6000 ELECTRICAL SCHEDULES, WIRING & DETAILS E6100 ELECTRICAL SCHEDULES, WIRING & DETAILS E6200 ELECTRICAL SCHEDULES, WIRING & DETAILS E6300 ELECTRICAL SCHEDULES, WIRING & DETAILS E6400 ELECTRICAL SCHEDULES, WIRING & DETAILS E6500 ELECTRICAL SCHEDULES, WIRING & DETAILS E6600 ELECTRICAL SCHEDULES, WIRING & DETAILS E6700 ELECTRICAL SCHEDULES, WIRING & DETAILS E6800 ELECTRICAL SCHEDULES, WIRING & DETAILS E6900 ELECTRICAL SCHEDULES, WIRING & DETAILS E7000 ELECTRICAL SCHEDULES, WIRING & DETAILS E7100 ELECTRICAL SCHEDULES, WIRING & DETAILS E7200 ELECTRICAL SCHEDULES, WIRING & DETAILS E7300 ELECTRICAL SCHEDULES, WIRING & DETAILS E7400 ELECTRICAL SCHEDULES, WIRING & DETAILS E7500 ELECTRICAL SCHEDULES, WIRING & DETAILS E7600 ELECTRICAL SCHEDULES, WIRING & DETAILS E7700 ELECTRICAL SCHEDULES, WIRING & DETAILS E7800 ELECTRICAL SCHEDULES, WIRING & DETAILS E7900 ELECTRICAL SCHEDULES, WIRING & DETAILS E8000 ELECTRICAL SCHEDULES, WIRING & DETAILS E8100 ELECTRICAL SCHEDULES, WIRING & DETAILS E8200 ELECTRICAL SCHEDULES, WIRING & DETAILS E8300 ELECTRICAL SCHEDULES, WIRING & DETAILS E8400 ELECTRICAL SCHEDULES, WIRING & DETAILS E8500 ELECTRICAL SCHEDULES, WIRING & DETAILS E8600 ELECTRICAL SCHEDULES, WIRING & DETAILS E8700 ELECTRICAL SCHEDULES, WIRING & DETAILS E8800 ELECTRICAL SCHEDULES, WIRING & DETAILS E8900 ELECTRICAL SCHEDULES, WIRING & DETAILS E9000 ELECTRICAL SCHEDULES, WIRING & DETAILS E9100 ELECTRICAL SCHEDULES, WIRING & DETAILS E9200 ELECTRICAL SCHEDULES, WIRING & DETAILS E9300 ELECTRICAL SCHEDULES, WIRING & DETAILS E9400 ELECTRICAL SCHEDULES, WIRING & DETAILS E9500 ELECTRICAL SCHEDULES, WIRING & DETAILS E9600 ELECTRICAL SCHEDULES, WIRING & DETAILS E9700 ELECTRICAL SCHEDULES, WIRING & DETAILS E9800 ELECTRICAL SCHEDULES, WIRING & DETAILS E9900 ELECTRICAL SCHEDULES, WIRING & DETAILS E10000 ELECTRICAL SCHEDULES, WIRING & DETAILS

## Project Team

**Owner:** Community Charter School of Paterson  
75 Spruce Street  
Paterson, NJ 07501  
T: 973.443.2057  
F: 973.263.1925

**Architect:** Design Ideas Group  
15 Bellamy Street  
New Brunswick, New Jersey 08901  
T: 732.287.1925

**Consultants:** Barry Isett & Associates, Inc.  
86 S. Route 100  
Paterson, NJ 07501  
T: 610.388.8944  
F: 610.388.8909



**Project No.:** 13,278  
**Date:** 4/30/13  
**Scale:** AS NOTED  
**Drawn by:** jlm  
**Checked by:** VM

**Project:** MIDDLE SCHOOL - COMMUNITY CHARTER SCHOOL OF PATERSON  
137 ELLISON STREET  
PATERSON, NJ 07501

**Owner:** COMMUNITY CHARTER SCHOOL OF PATERSON  
75 SPRUCE STREET  
PATERSON, NJ 07501

**Design Ideas Group**  
15 Bellamy Street  
New Brunswick, New Jersey 08901  
T: 732.287.1925

**Barry Isett & Associates, Inc.**  
86 S. Route 100  
Paterson, NJ 07501  
T: 610.388.8944  
F: 610.388.8909

**Barry Isett & Associates, Inc.**  
86 S. Route 100  
Paterson, NJ 07501  
T: 610.388.8944  
F: 610.388.8909

**Barry Isett & Associates, Inc.**  
86 S. Route 100  
Paterson, NJ 07501  
T: 610.388.8944  
F: 610.388.8909