



**MOVING FLORIDA
FORWARD** 
Infrastructure Initiative

U.S. 301 Widening & Realignment

Presentation to: Sumter County Chamber of Commerce

October 15, 2025

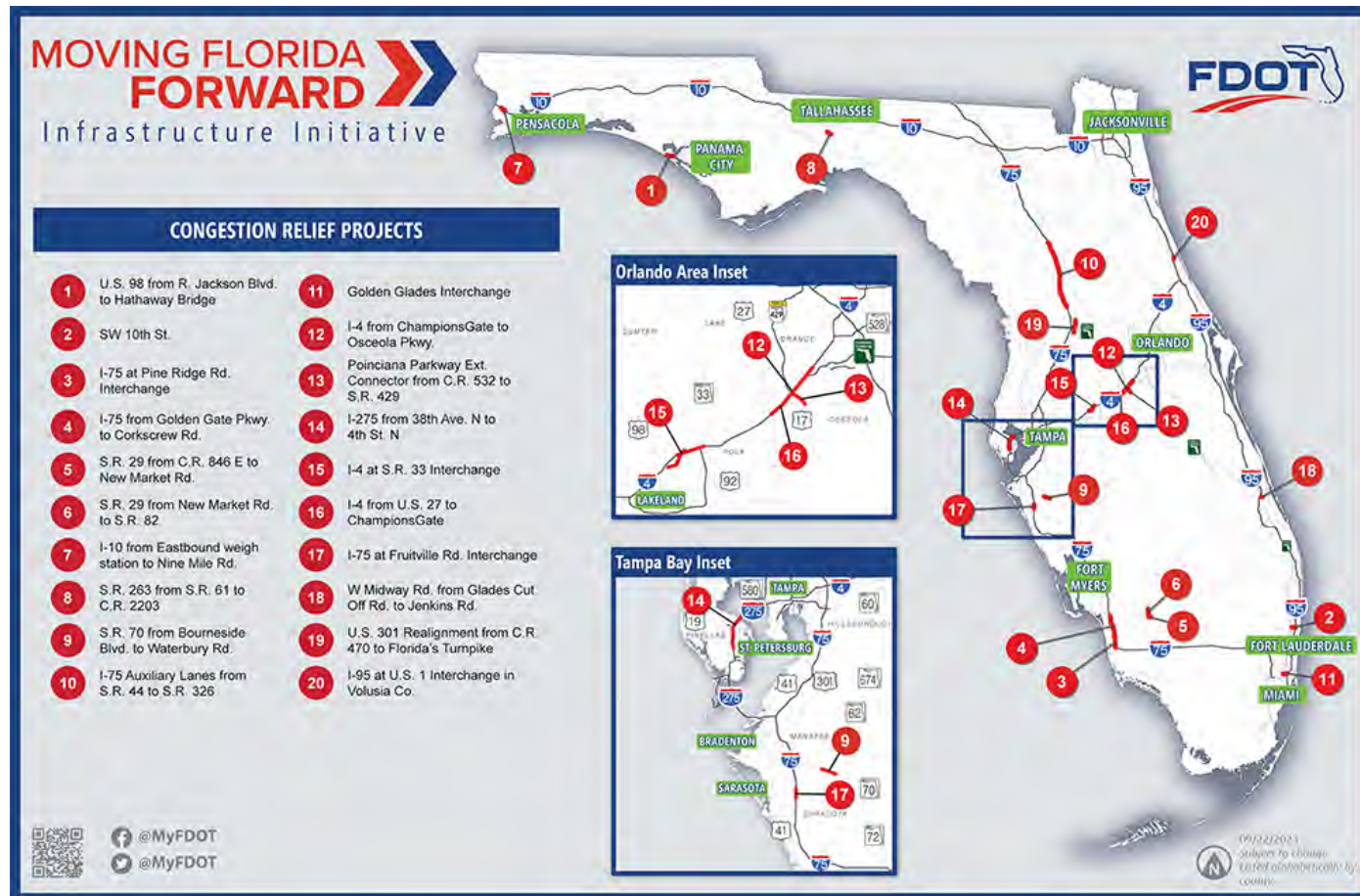
FPID Nos.: 430132-2, 430132-4, 430132-5

Project Background



- » U.S. 301 currently a two-lane undivided roadway
- » PD&E Study completed in 2019 under FPID No. 430132-1
- » Three alternatives evaluated to increase capacity and safety
- » Design follows the identified preferred Alternative 2

Moving Florida Forward Investment



19

MOVING FLORIDA FORWARD
Infrastructure Initiative



U.S. 301 Realignment from C.R. 470 to Florida's Turnpike

PROJECT DESCRIPTION

- Reconstruct U.S. 301 from C.R. 470 to FL's Turnpike
- Add shared use path
- Realigns roadway for truck traffic around City of Coleman
- Two added traffic signals: C.R. 525 & Warm Springs Ave

COUNTY
Sumter

PROJECT LIMITS

U.S. 301 from County Road (C.R.) 470 to Florida's Turnpike

FUNDING

\$60 Million

CONSTRUCTION

2025

PROJECT LOCATION



REGIONAL ECONOMIC IMPACT
\$255 MILLION



PROJECT BENEFITS

New signal at C.R. 525 to

REDUCE DELAYS BY 83%

in the AM peak & **94.5%** in the PM peak

New signal at Warm Springs Ave to

REDUCE DELAYS BY 98%

in the AM/PM peak times

STREAMLINED ROUTE

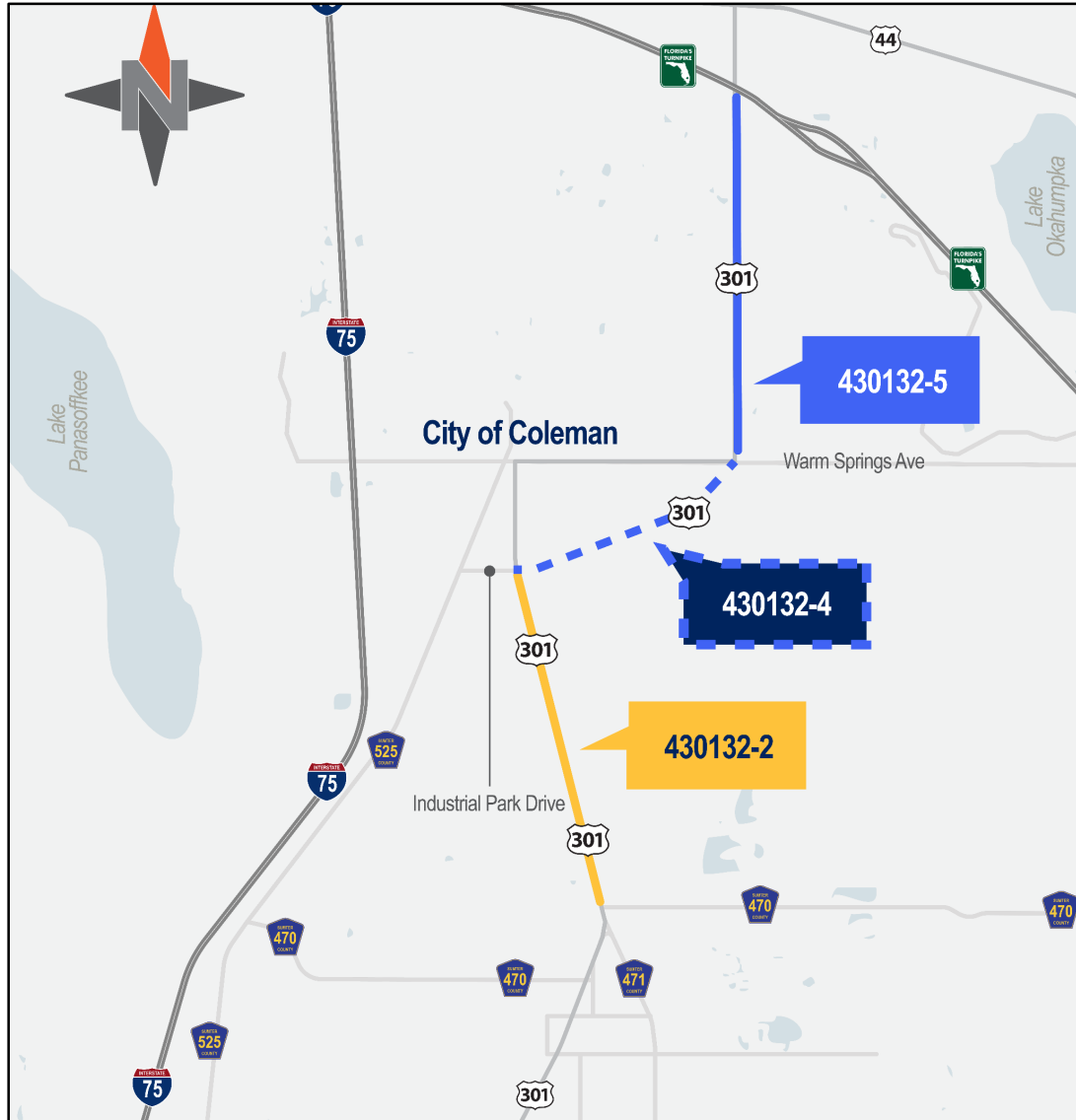
for truckers benefiting FL's supply chain



INCREASED mobility for the community downtown



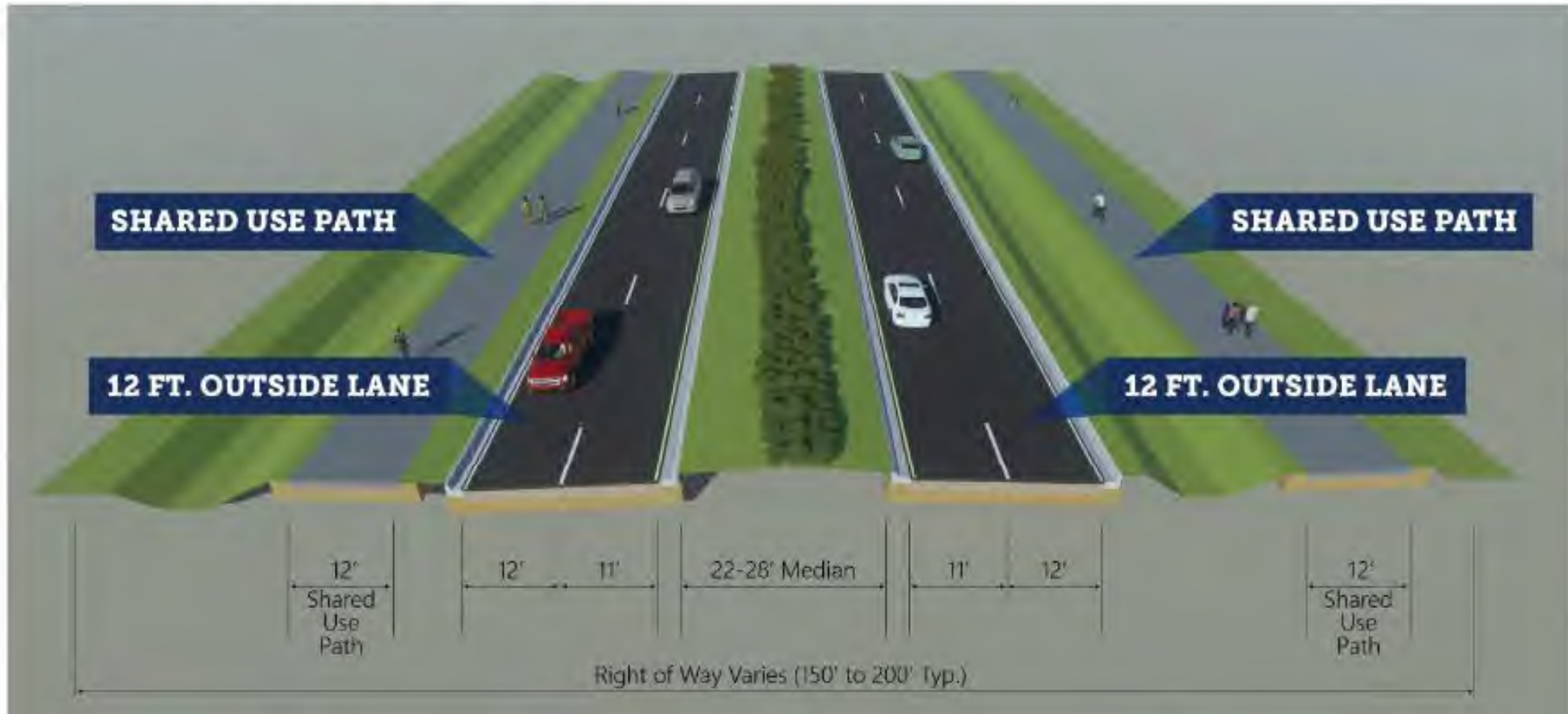
U.S. 301 Widening & Realignment Overview



- Overall limits are from County Road (C.R.) 470 to Florida's Turnpike
- Project divided into three segments for construction
 - 430132-2 – C.R. 470 to Industrial Park Drive (C.R. 525E and formerly Coleman Connector)
 - 430132-4 – Industrial Park Drive to south of Warm Springs Avenue (C.R. 468)
 - 430132-5 – Warm Springs Avenue to Florida's Turnpike

Proposed U.S. 301 (S.R. 35) Typical Section

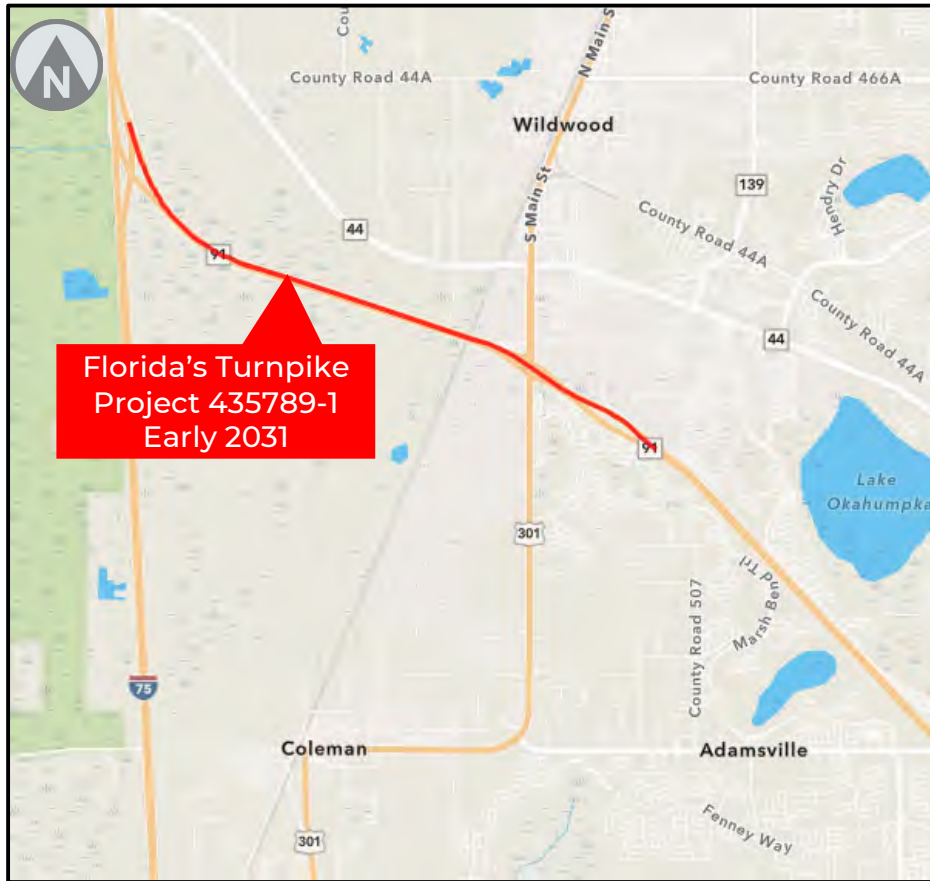
Four Lane Urban Typical (Full Reconstruction)



U.S. 301 Realignment (430132-4)



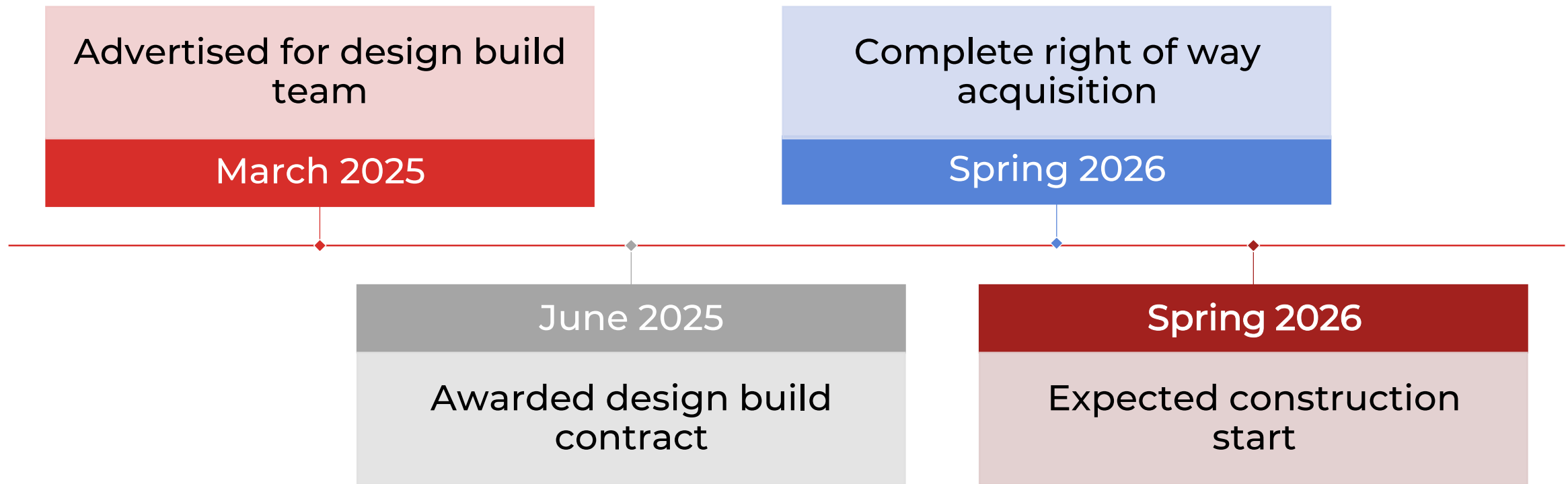
Turnpike Interchange Improvements



Turnpike Interchange Improvements



Estimated Schedule & Costs 430132-4

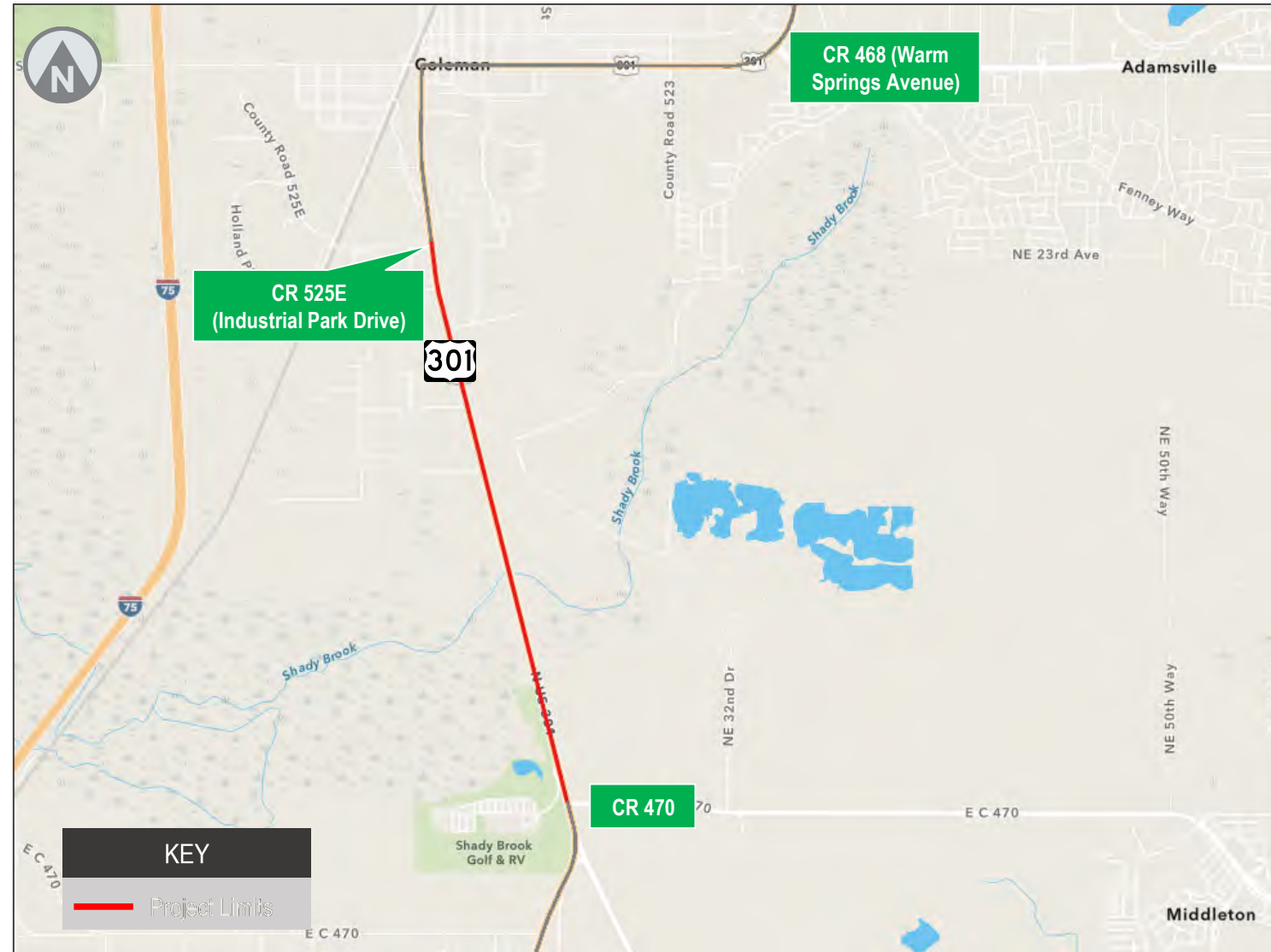


Construction cost for the realignment is about \$26 million

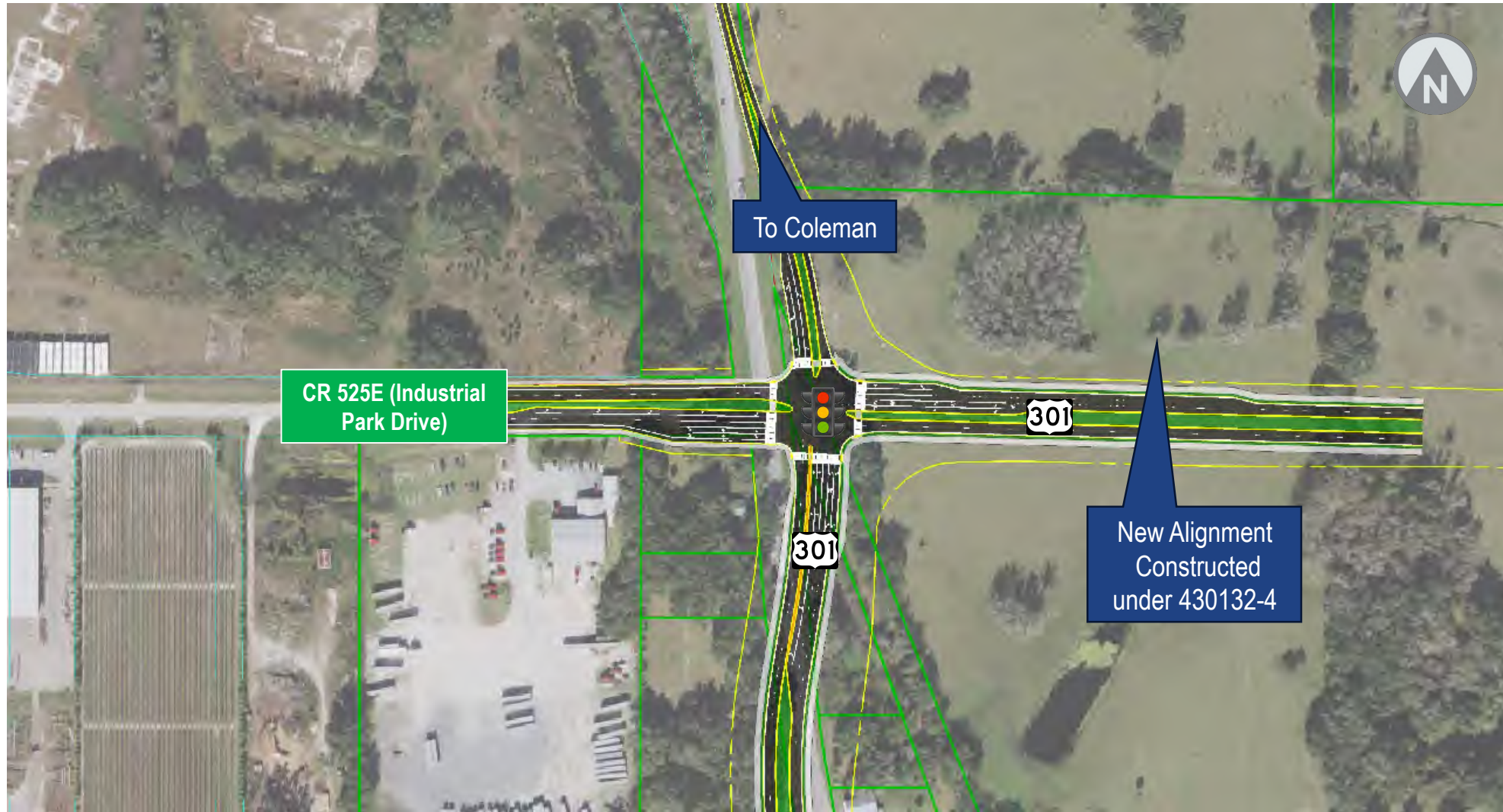
NOTE: New alignment will not open until other segments are built

U.S. 301 Widening – Southern Segment (430132-2)

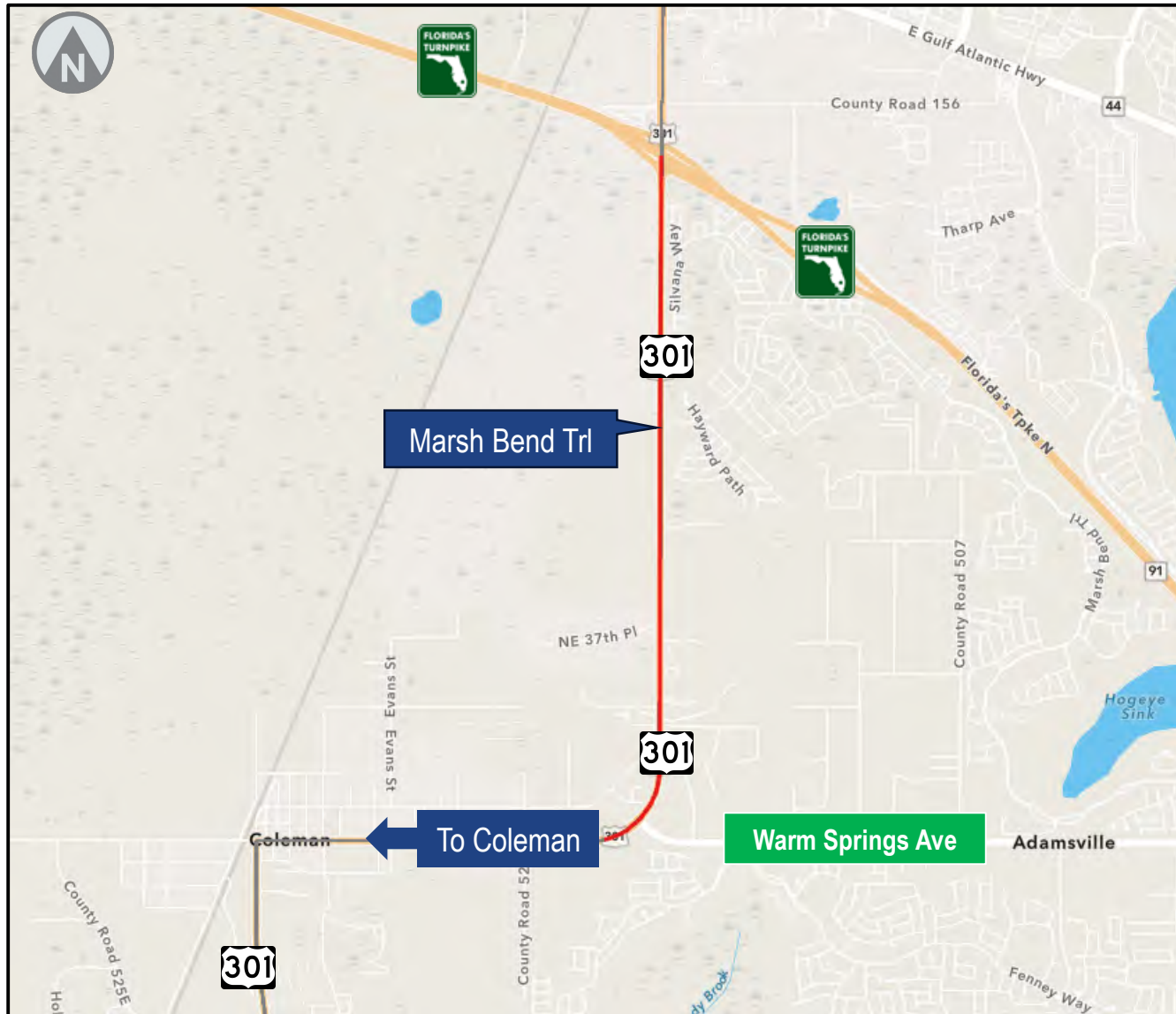
- Complete design late 2026
- Construction expected to start Summer 2027
- Estimated construction cost = \$64 million



U.S. 301 Widening - Southern Segment (430132-2)



U.S. 301 Widening – Northern Segment (430132-5)

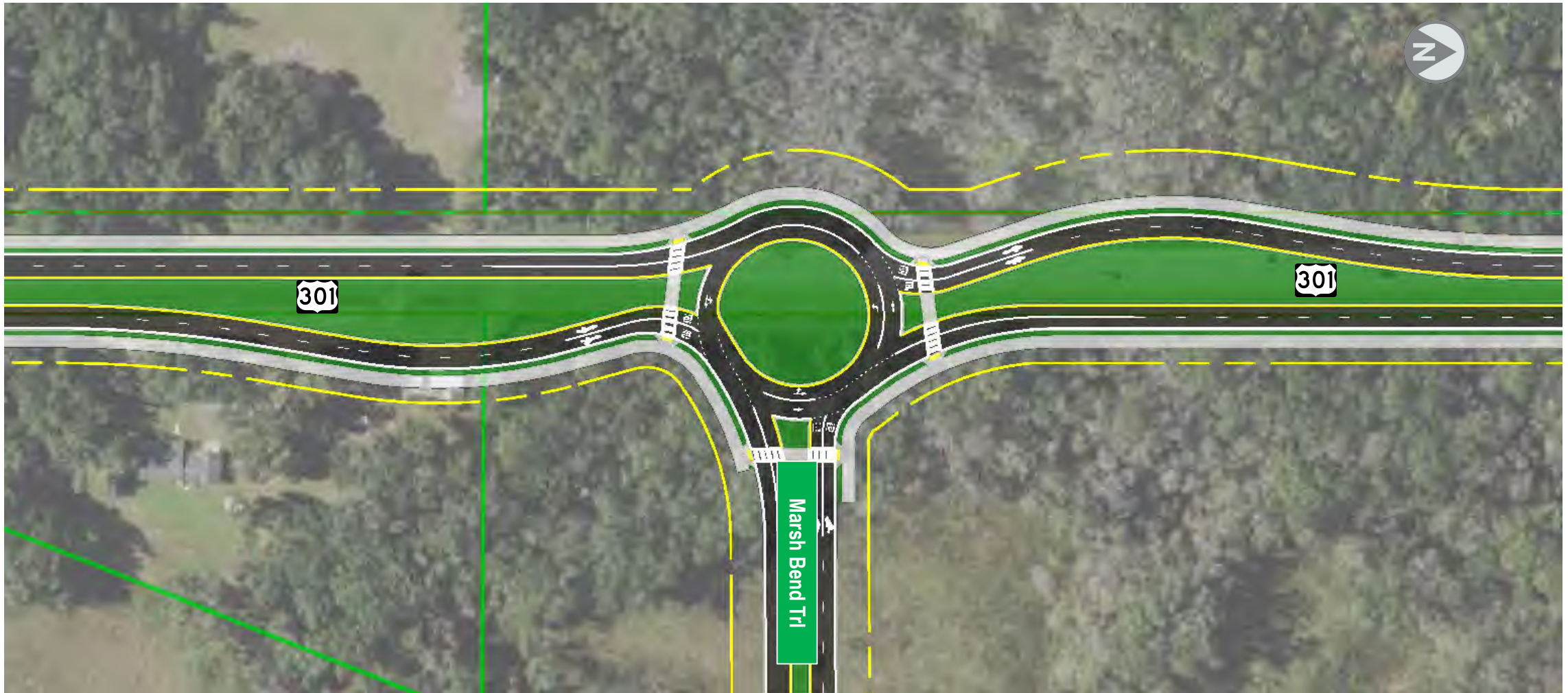


- Complete design late 2026
- Construction expected to start fall 2027
- Estimated construction cost = \$67 million

U.S. 301 Realignment (430132-4)



Marsh Bend Trail Roundabout (430132-5)



Contact the Project Manager



Derek.Dean@dot.state.fl.us



719 S. Woodland Blvd., MS 542
DeLand, FL 32720



386-943-5161

www.CFLRoads.com





Thank you!

