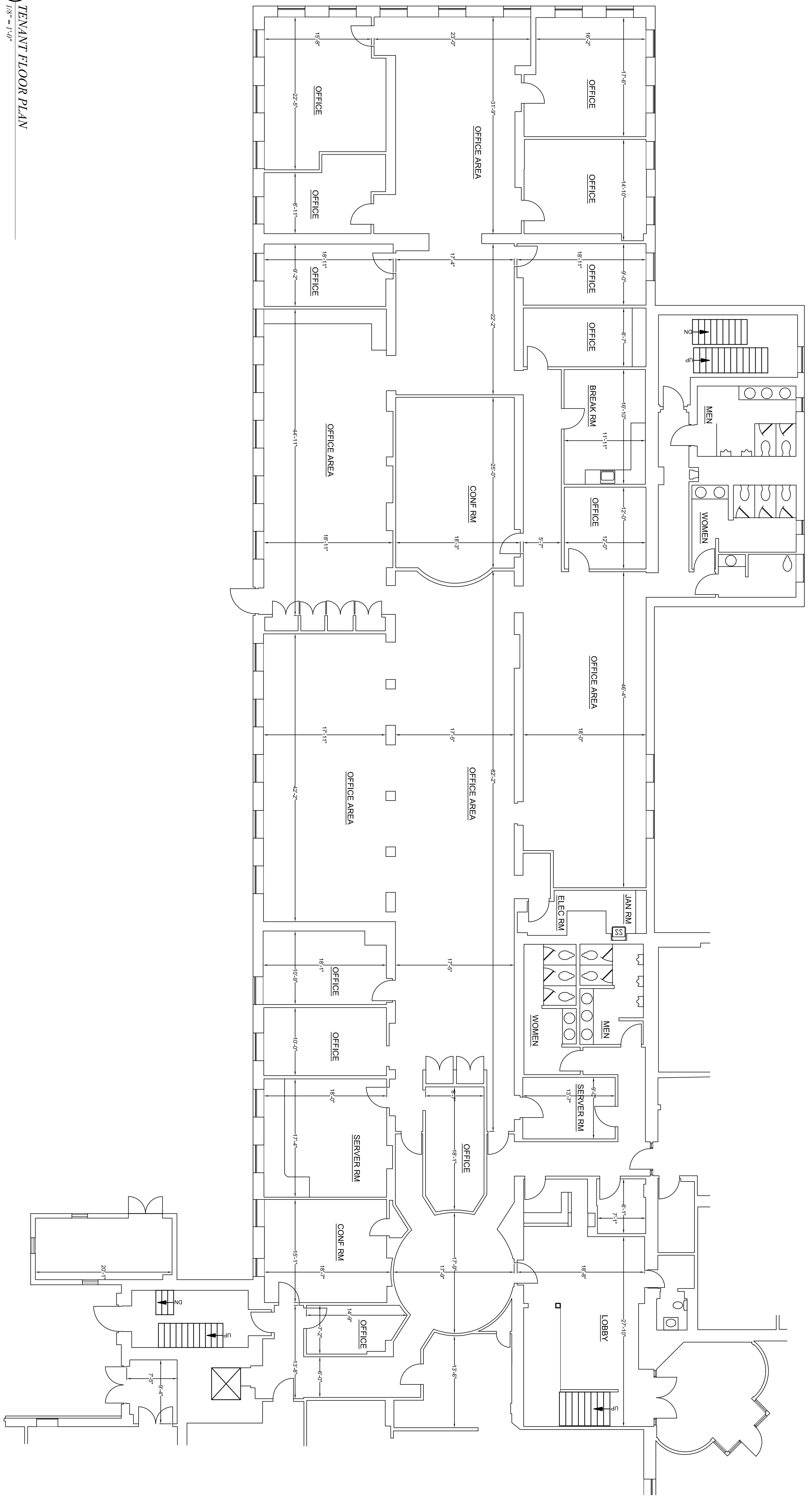


1
1/8" = 1'-0"

TENANT FLOOR PLAN



COMMERCIAL BUILDING
MARLOW PARK, L.L.C.
445 GODWIN AVENUE MIDLAND PARK, NJ
445 GODWIN AVENUE TENANT
FLOOR PLAN

Nick Tsapatsaris & Associates
Architects - Engineers
info@tsapatsaris.com
10 WILSEY SQUARE
RIDGEWOOD, NJ 07450
Phone: (201) 447-7044 Fax: 447-6074
119 FIRST AVENUE S. Suite 470
SEATTLE, WA 98104
Phone: (206) 535-7972

DRAWN BY:
M.S.
CHECKED BY:
N.T.
DATE:
OCT. 25, 2019
SCALE:
3/8" = 1'-0"

REVISION:
THIS DRAWING "ARCHITECTURAL WORK" IS PROTECTED UNDER SECTION 102 OF THE COPYRIGHT ACT (TITLE 17 OF THE UNITED STATES CODE) AS AMENDED ON DECEMBER 1, 1990. ALL DOCUMENTS CONTAINED HERE-IN ARE PROPERTY OF NICK TSAPATSARIS AND ASSOCIATES.
ALTERNATION OF THIS DRAWING, EXCEPT BY A LICENSED PROFESSIONAL ENGINEER OR ARCHITECT IS ILLEGAL. ANY ALTERATION BY A PROFESSIONAL ENGINEER OR ARCHITECT MUST BE INDICATED AND BEAR HIS/HER SEAL, SIGNATURE AND DATE OF ALTERATION.
THE USER OF THIS DRAWING SHALL VERIFY ALL DIMENSIONS SHOWN HEREON AND SCALE OF THIS DRAWING.

NICK TSAPATSARIS P.E., R.A.
N.J. Architect Lic. 15195
N.J. Engineer Lic. 38446
N.Y. Engineer Lic. 07630
THIS LINE IS 1" LONG

JOB NUMBER
0431203
DRAWING NUMBER
A-101