

FOR
LEASE

OFFICE

THE DENTAL CENTER

2304 Berlin Turnpike Newington, CT 06111



2304 Berlin Turnpike - Office

Reese Commercial is pleased to present office space at 2304 Berlin Turnpike, Newington, CT for Lease. Suite 201 (1,290 SF) and Suite 202 (770 SF) can be leased separately or combined for a total of 2,060 SF. Rental rates are \$1,250 and \$850 plus utilities and janitorial. Space is located on the second floor (walk up only, no elevator).

The first floor is occupied by The Dental Center LLC.

Prime location Northeast of the McDonald's intersection. Heavily traveled section of Berlin Turnpike with easy access to I-91.

Building Amenities

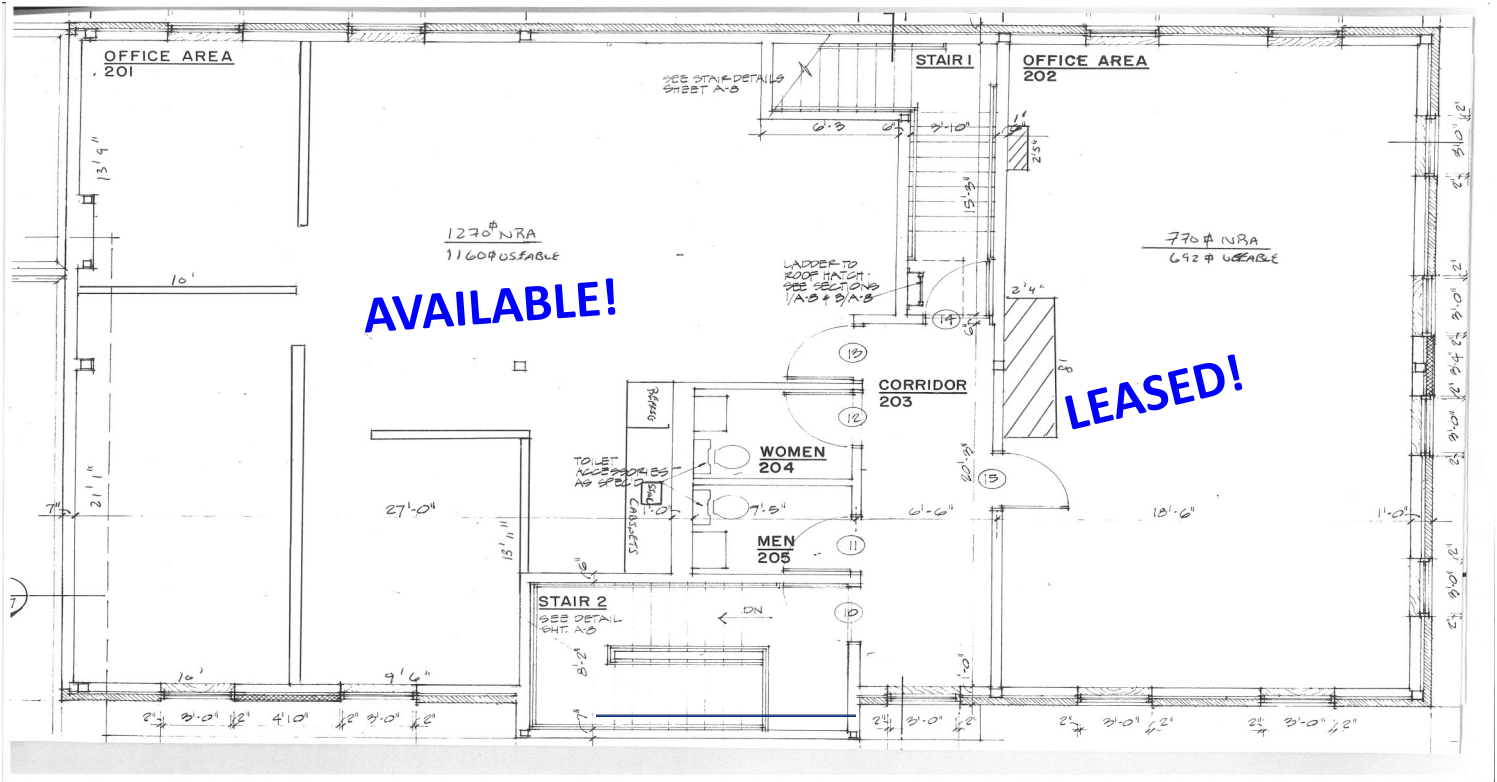
- Suite 201 at \$1,250/Month Modified Gross, 1,290 SF
Features 3 offices, large open 20' x 20' area
Breakfast bar with sink/cabinetry
- Suite 202 at \$850/Month Modified Gross, 770 SF
Features open floor plan 36' x 18.5' area

LEASED!

Reese & Company Real Estate LLC
2275 Silas Deane Hwy., Suite 300 | Rocky Hill, CT 06067
Direct 860.721.9000 x 1
dreese@reesecommercial.com



Floor Plan



Dimensions

Suite 201 (1,290 SF) Suite 202 (770 SF)

Directions

I-91S to CT-15S/US-5 S to Berlin Turnpike.

Contact Us

Reese & Company Real Estate LLC
2275 Silas Deane Hwy., Suite 300
Rocky Hill, CT 06067
Direct 860.721.9000 x 1
reese@reesecommercial.com

Information contained herein has been obtained from the owners or from other sources deemed reliable. We have no reason to doubt its accuracy but regret we cannot guarantee it. All property subject to change or withdrawal without notice..

