

470 Woods Mill Road +/- 1,002 Sqft Office Gainesville, Ga 30501



Great small office set-up in the middle of Gainesville, GA. This approximately 1,002 sqft space offers 4 private offices plus one large entry/bullpen area. This space also shares 3 restrooms with another tenant, so all 1,002 sqft of space is usable to the tenant. The space also comes with two assigned parking spaces, but additional parking is available on the east side of the building. New owners have invested and upgraded the property over the last 6 months including a new roof, landscaping and signage...more improvements are in the works.

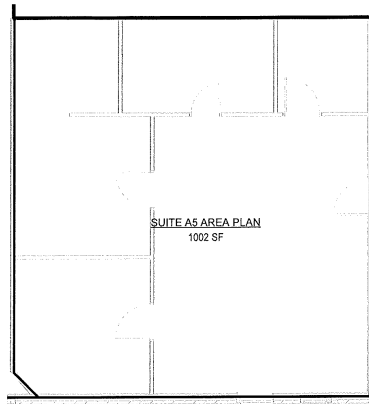
- **Asking \$1,461.25/month** (\$16/sqft plus \$1.50 CAM)

[Click Here for a Virtual Tour](#)

 **BERKSHIRE HATHAWAY
COMMERCIAL DIVISION**


DON GRIMSLEY
COMMERCIAL REAL ESTATE

Don Grimsley
Office: 770-533-6738
Cell: 706-968-9000
Email:
Don@DonGrimsley.com
500 Jesse Jewell Pkwy
Ste 300
Gainesville, GA 30501



1 SUITE A5 AREA PLAN (PIPE DREAM PRINTS)

SCALE: 3/16" = 1'-0"

TOTAL AREA AT SUITE A5: 1,002SF

| | | |
|---|---|---|
|  <small>www.draaww.com</small> <small>(website pending)</small> BOWLINE INVESTMENT GROUP | 470 WOODSMILL -AS-BUILT <small>SUITE A5 (1002 SF) (1002 SF)</small> | AREA PLAN SUITE A5 <small>Project Number</small> 24,032 <small>Date</small> 2025 02/08 <small>Drawn by</small> TB <small>Checked by</small> GVV <small>Scale: As Indicated</small> |
|---|---|---|

2/8/2025 3:13:02 PM

