

# DAYTON BUSINESS PARK

New Construction  
**FOR LEASE**

**20**

Haypress Road, Cranbury, NJ 08512



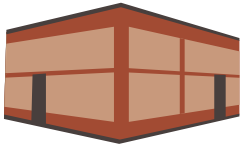
## AVAILABLE NOW FOR LEASE 3,000 SF - 52,000 SF

- ▶ Under Construction to be completed February 2018
- ▶ 52,000 sqft phase 1, overall building to be 105,000 sqft when completed
- ▶ ESFR Sprinkler System
- ▶ Swipe Card access control
- ▶ Video Monitoring of the inside and outside of the building
- ▶ Verizon and Comcast internet and phone service available
- ▶ 21 foot clear height ceilings
- ▶ Suites can be combined to make larger spaces

## ALL SUITES HAVE

- ▶ 12 x 12 drive in door
- ▶ Walk in door
- ▶ Access to 4 loading docks with 10 x 9 door
- ▶ City gas heat with separate meter
- ▶ ESFR sprinkler system
- ▶ 3 phase electric service with separate meter
- ▶ Access to bathrooms and washroom with sink
- ▶ Offices and bathrooms can be added if needed

[www.daytonbusinesspark.com](http://www.daytonbusinesspark.com)



# DAYTON BUSINESS PARK

New Construction

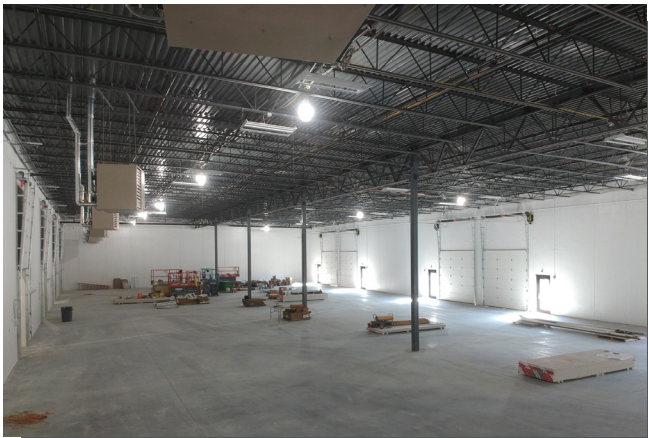
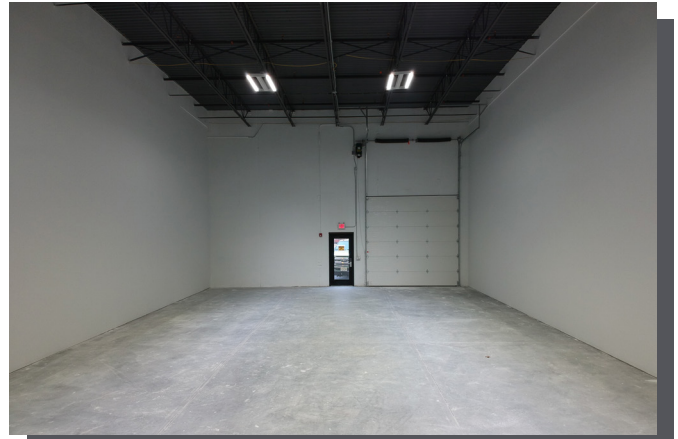
**FOR LEASE**

**20**

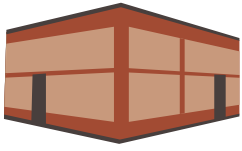
Haypress Road, Cranbury, NJ 08512



VISUAL







# DAYTON BUSINESS PARK

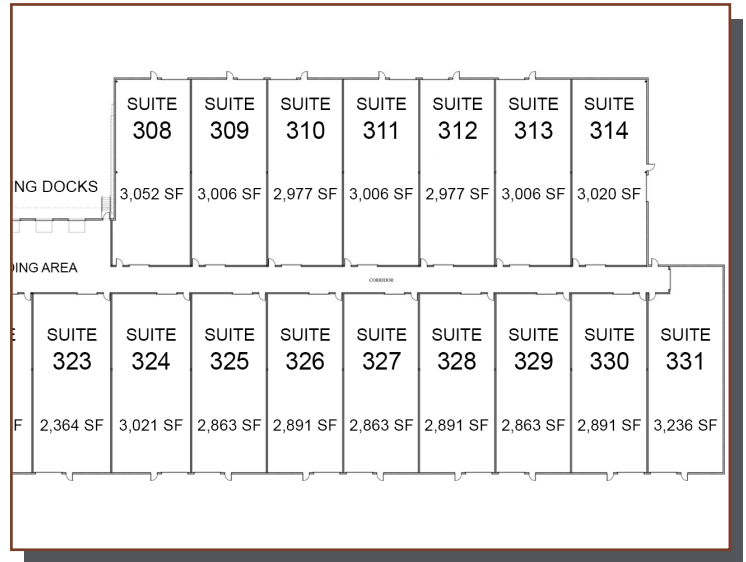
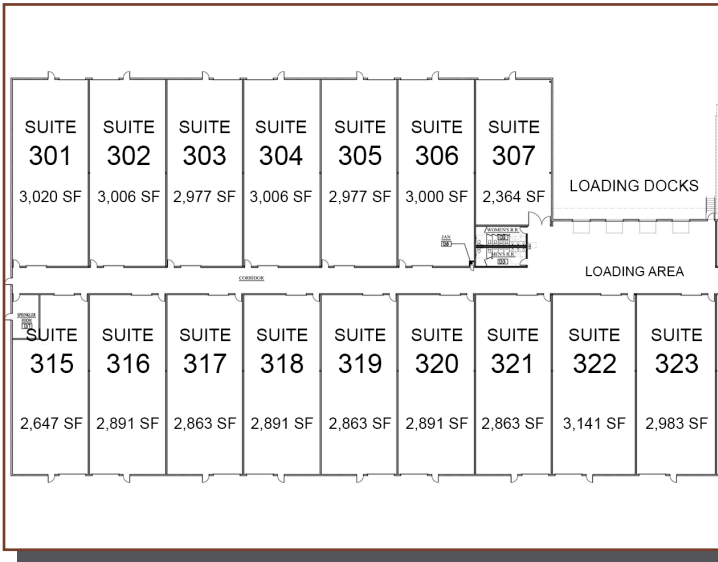
New Construction  
FOR LEASE

20

Haypress Road, Cranbury, NJ 08512



## SITE PLAN PHASE 1 & PHASE 2



## LOCATION

- ▶ Set in a park-like setting in Dayton, South Brunswick, Central New Jersey
- ▶ Located 4 minutes from Route 130 and The South Brunswick Park & Ride, and 9 minutes to Exit 8A of the NJ Turnpike/Route 95
- ▶ About 1 hour drive time to New York City and Philadelphia
- ▶ Princeton Train Station is nearby



## CONTACT INFO

Russell Wagner  
732-392-6845  
rwagner@daytonbusinesspark.com