

AUTOZONE SURPLUS LAND



MID-AMERICA[®]
Real Estate-Michigan, Inc.

2980 Gratiot Boulevard / Marysville, MI



RETAIL OPPORTUNITY

AUTOZONE SURPLUS LAND



Address

2980 Gratiot Boulevard
Marysville, MI 48040

Features

Vacant land available for sale.

Asking Price: \$75,000

Availability

1.46 Acres

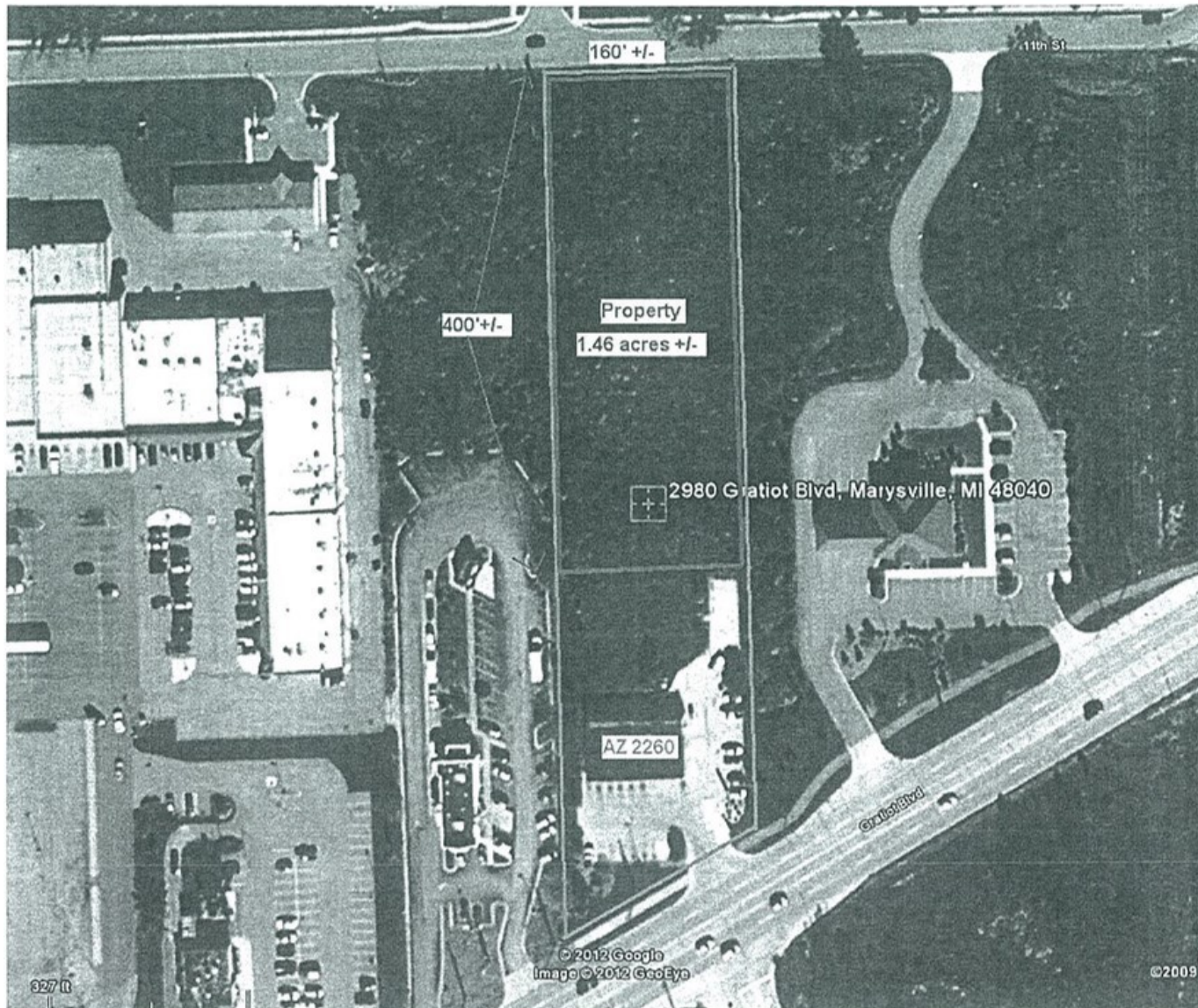


Demographics (2020)

	1 MILE	3 MILES	5 MILES
POPULATION	5,063	15,799	33,885
HOUSEHOLDS	1,996	6,259	13,256
AVG HOUSEHOLD INCOME	\$80,507	\$75,388	\$70,736
DAYTIME POPULATION	4,990	16,029	34,641

This information contained herein has either been given to us by the owner of the property or obtained from sources that we deem reliable. We have no reason to doubt its accuracy but we do not guarantee it.

AUTOZONE SURPLUS LAND



AUTOZONE SURPLUS LAND



AUTOZONE SURPLUS LAND

Cynthia J.
Kratchman

Mid-America Real Estate –
Michigan Inc.

T: 248.855.6800

CKratchman@MidAmericaGrp.com



MID-AMERICA®
Real Estate-Michigan, Inc.

38500 Woodward Avenue
Suite 100

Bloomfield Hills, MI 48304

248.855.6800

MidAmericaGrp.com



CONTACT