

FOR SALE & LEASE

411 JEFFERSON ST #1

Hoboken, NJ 07030



1,012 SF

PROPERTY DESCRIPTION

1,012 SF Ground Level Retail Condo For Lease & Sale

PROPERTY HIGHLIGHTS

- Available in 60 Days
- 1,012 SF Retail Condo in a Mixed-Use Building
- Private Outdoor Patio Space
- Prime Midtown Location
- Perfect for Boutique Fitness, Medical/Wellness and Daily Needs
- Great Foot Traffic in a Dense Residential Area with Strong Daytime Population
- Excellent Signage and Street Visibility
- Accessible Street Parking and 1 Block from Midtown Garage
- Near Columbus Park, Church Square Park and Mama Johnson Field
- Easy access to the NJ Transit Light Rail, Path, Ferry, Rt 78, 1&9, NJ Turnpike, Rt 139, Lincoln & Holland Tunnels, Jersey City Heights, Downtown Jersey City
- Blocks away from the Hoboken Westside Development

OFFERING SUMMARY

Sale Price:	Call For Details
Lease Rate:	Call For Details
Number of Units:	1
Available SF:	1,012 SF
Building Size:	1,012 SF

DEMOGRAPHICS	0.25 MILES	0.5 MILES	1 MILE
Total Households	5,509	18,126	45,788
Total Population	11,200	37,510	99,065
Average HH Income	\$199,780	\$208,938	\$182,366

CHRISTOPHER CONWAY

(201)-720-5310

cconway@atlanticcoastalre.com

Atlantic Coastal Real Estate | 9 Avenue at Port Imperial #111, West New York, NJ 07093 | atlanticcoastalre.com

ACRE.
ATLANTIC COASTAL
REAL ESTATE

FOR SALE & LEASE

411 JEFFERSON ST #1

Hoboken, NJ 07030



CHRISTOPHER CONWAY

(201)-720-5310

cconway@atlanticcoastalre.com

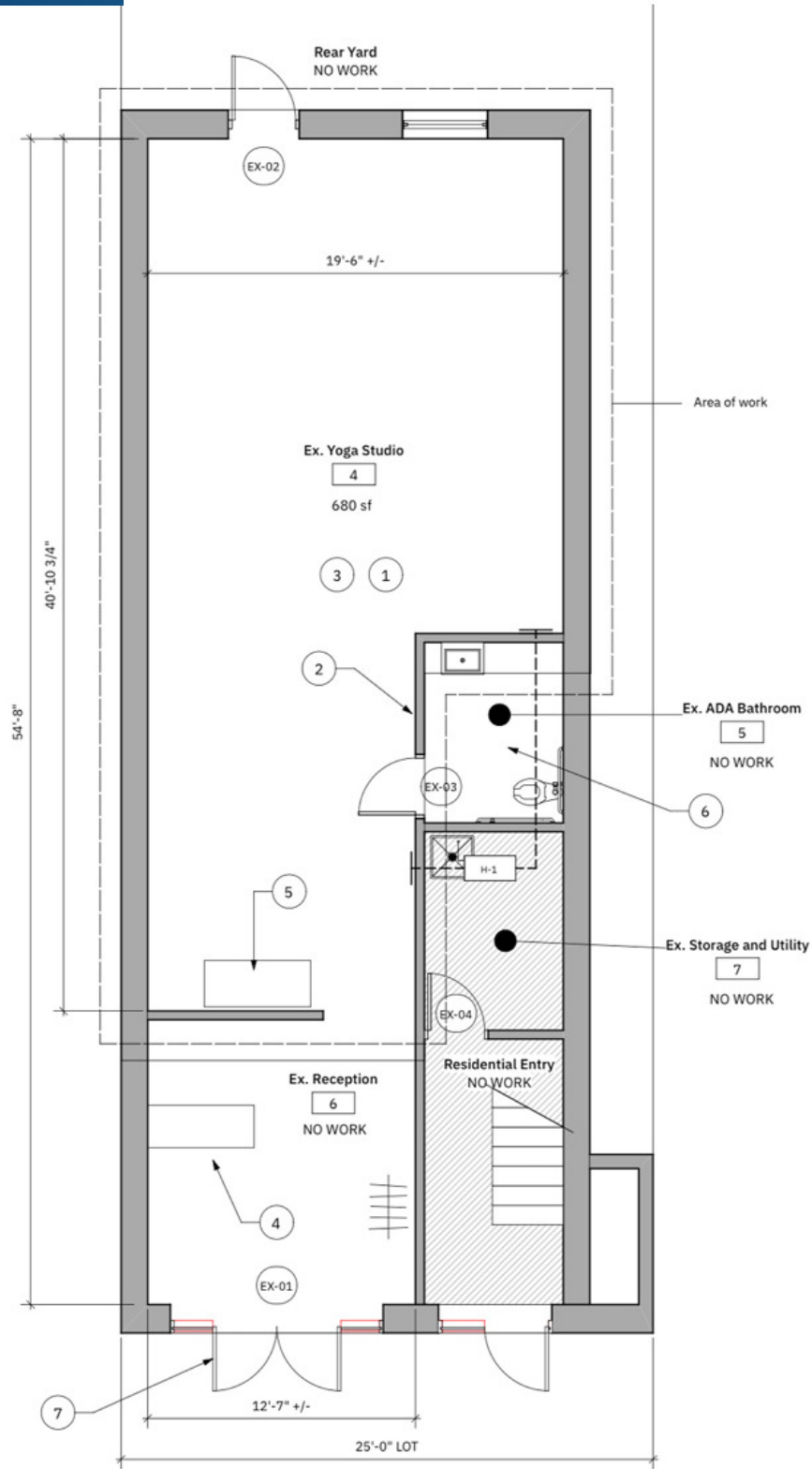
Atlantic Coastal Real Estate | 9 Avenue at Port Imperial #111, West New York, NJ 07093 | atlanticcoastalre.com

ACRE.
ATLANTIC COASTAL
REAL ESTATE

FOR SALE & LEASE

411 JEFFERSON ST #1

Hoboken, NJ 07030



CHRISTOPHER CONWAY

(201)-720-5310

cconway@atlanticcoastalre.com

Atlantic Coastal Real Estate | 9 Avenue at Port Imperial #111, West New York, NJ 07093 | atlanticcoastalre.com

ACRE.
ATLANTIC COASTAL
REAL ESTATE

FOR SALE & LEASE

411 JEFFERSON ST #1

Hoboken, NJ 07030



Google

CHRISTOPHER CONWAY

(201)-720-5310

cconway@atlanticcoastalre.com

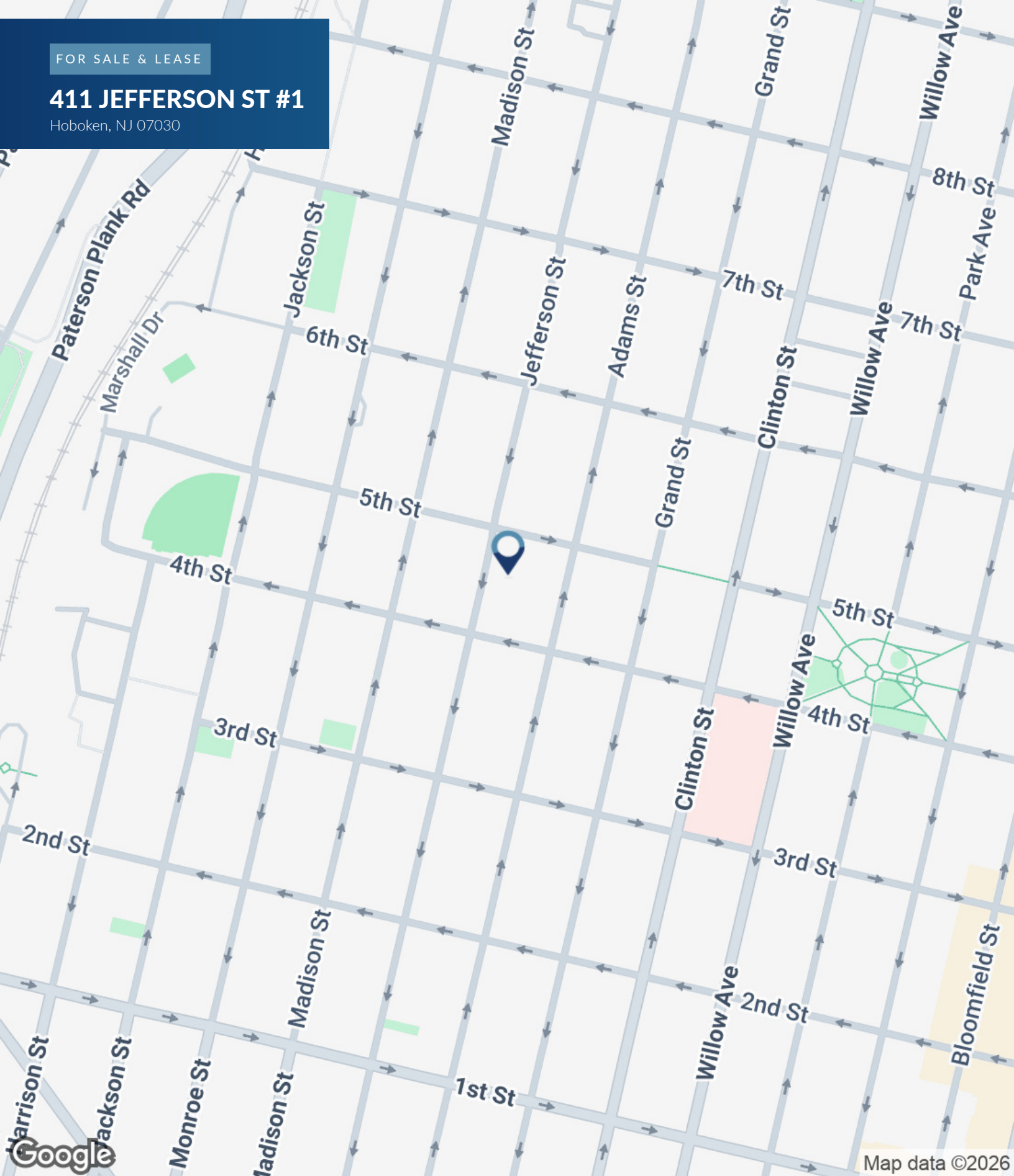
Atlantic Coastal Real Estate | 9 Avenue at Port Imperial #111, West New York, NJ 07093 | atlanticcoastalre.com

ACRE.
ATLANTIC COASTAL
REAL ESTATE

FOR SALE & LEASE

411 JEFFERSON ST #1

Hoboken, NJ 07030



CHRISTOPHER CONWAY

(201)-720-5310

cconway@atlanticcoastalre.com

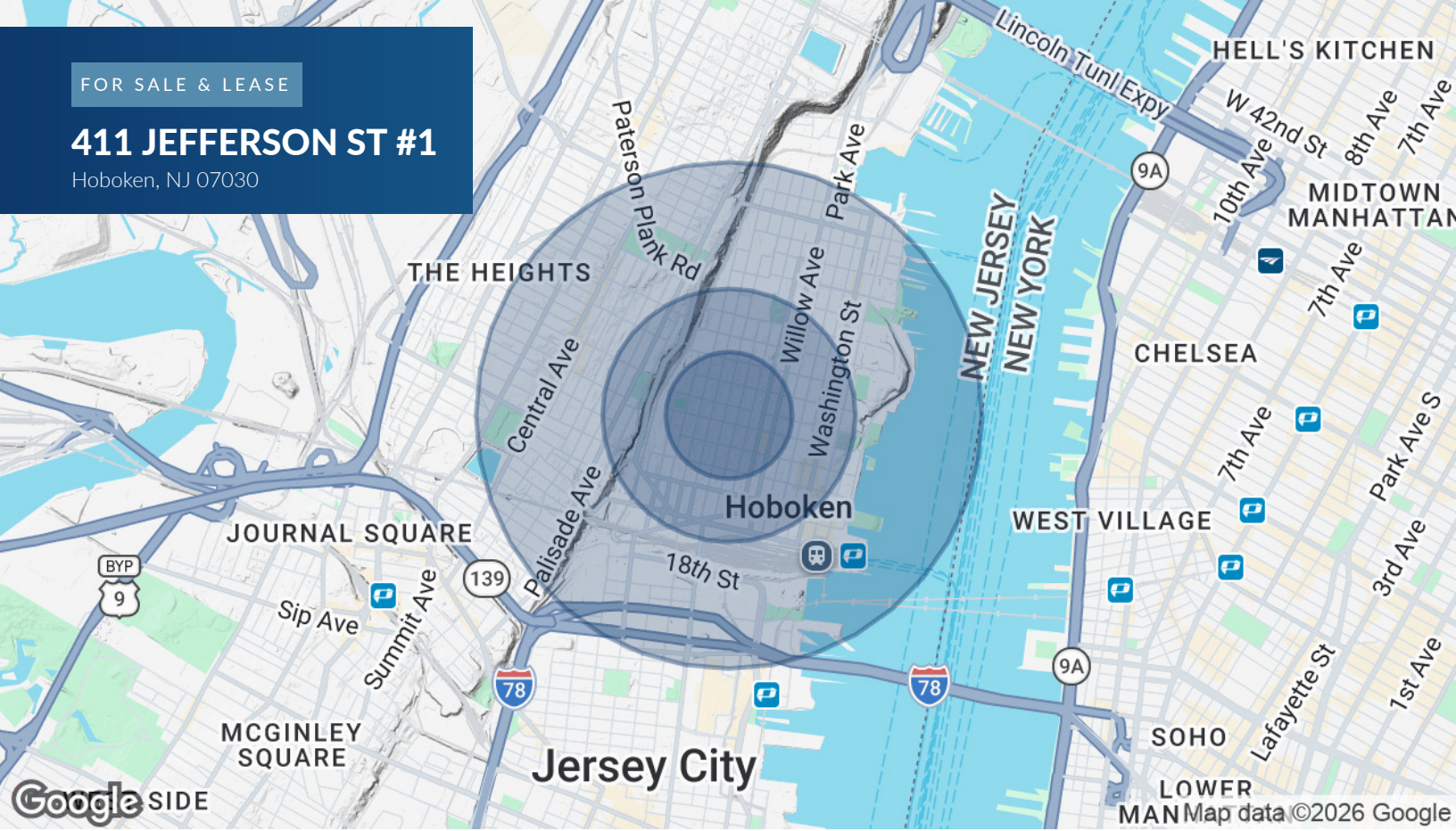
Atlantic Coastal Real Estate | 9 Avenue at Port Imperial #111, West New York, NJ 07093 | atlanticcoastalre.com

ACRE.
ATLANTIC COASTAL
REAL ESTATE

FOR SALE & LEASE

411 JEFFERSON ST #1

Hoboken, NJ 07030



POPULATION

0.25 MILES

0.5 MILES

1 MILE

Total Population	11,200	37,510	99,065
Average Age	32.1	32.6	33.9
Average Age (Male)	31.7	32.6	33.7
Average Age (Female)	32.0	32.4	34.5

HOUSEHOLDS & INCOME

0.25 MILES

0.5 MILES

1 MILE

Total Households	5,509	18,126	45,788
# of Persons per HH	2.0	2.1	2.2
Average HH Income	\$199,780	\$208,938	\$182,366
Average House Value	\$752,265	\$844,136	\$767,487

2023 American Community Survey (ACS)

CHRISTOPHER CONWAY

(201)-720-5310

cconway@atlanticcoastalre.com

Atlantic Coastal Real Estate | 9 Avenue at Port Imperial #111, West New York, NJ 07093 | atlanticcoastalre.com

ACRE.
ATLANTIC COASTAL
REAL ESTATE