

FLAGSHIP RETAIL SPACE FOR LEASE

325 SEASIDE AVENUE

WAIKIKI, HAWAII





WAIKIKI MAP



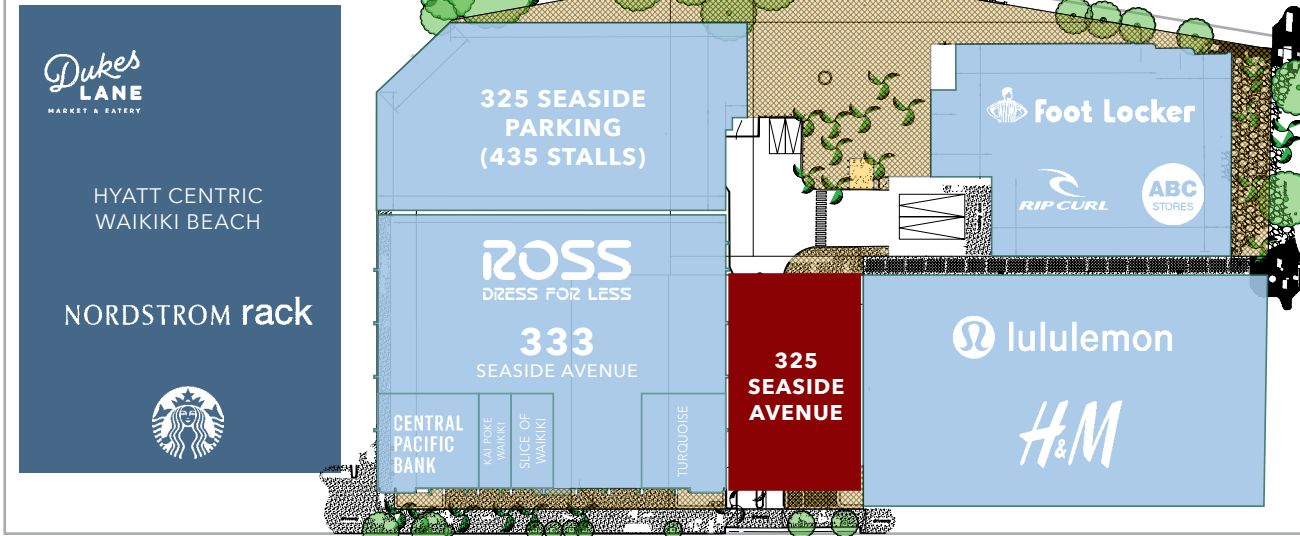
THE LAYLOW
AUTOGRAPH COLLECTION

INTERNATIONAL
MARKET PLACE

BEACHCOMBER WAIKIKI
BY OUTRIGGER



KUHIO AVENUE - 24,386 ADT



SEASIDE AVENUE - 7,513 ADT

MARINE SURF WAIKIKI

THE
SHORELINE
WAIKIKI

SEASIDE
COMMERCIAL
CENTER

WAIKIKI SHOPPING PLAZA

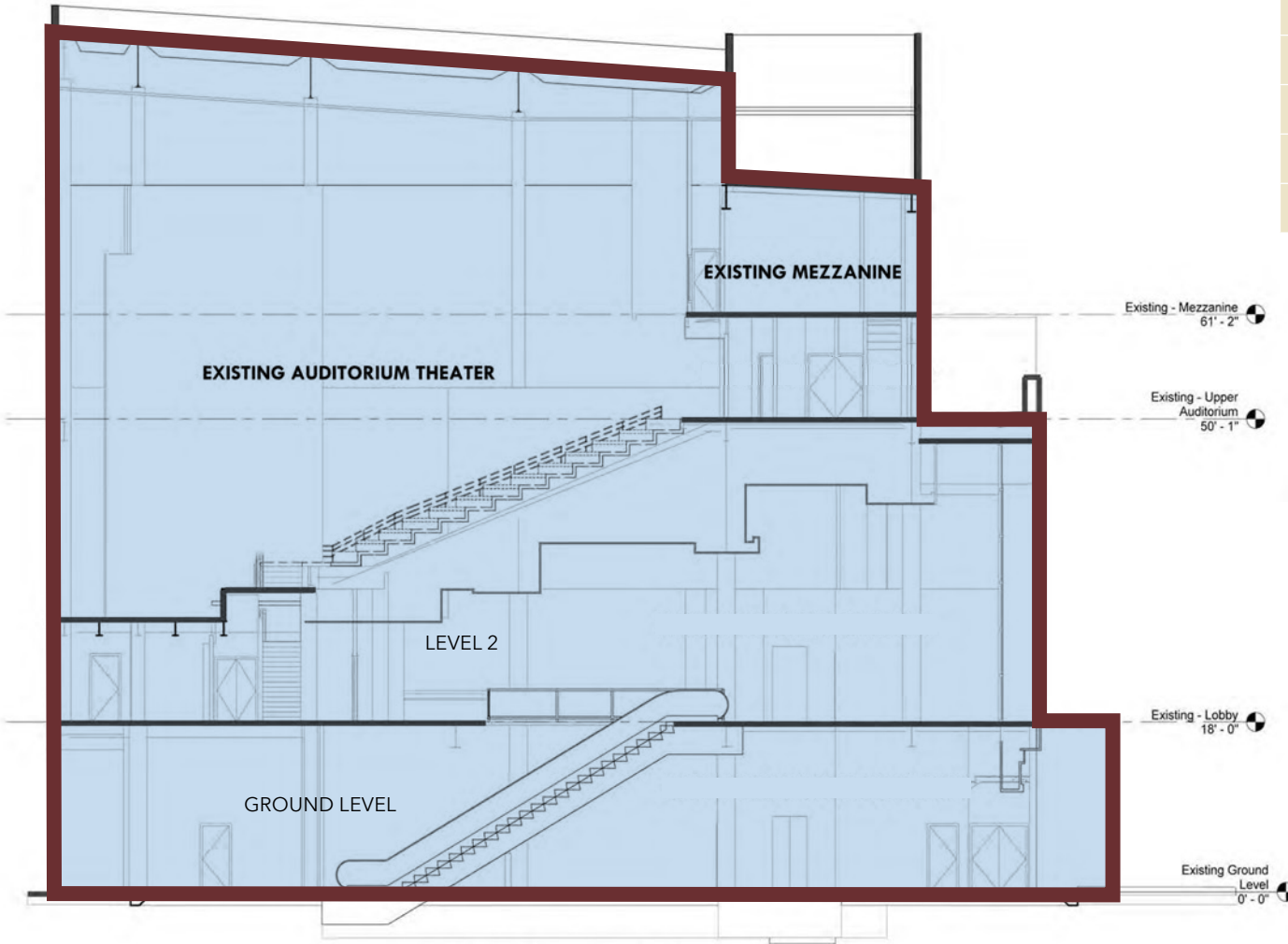
KALAKAUA AVENUE - 27,166 ADT

ROYAL HAWAIIAN
SHOPPING CENTER

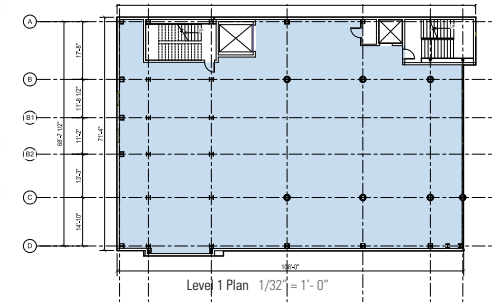
PROPERTY OVERVIEW

325 Seaside is located within the heart of Waikiki. Seaside Avenue is a primary connector street between Kalakaua Avenue and Kuhio Avenue, including multiple restaurants and retailers. 325 Seaside is part of the larger block owned by Robertson Properties that includes Ross, Central Pacific Bank, H&M, Lululemon, Rip Curl, Footlocker, ABC Stores, and others. The block features one of the most convenient retail parking structures in Waikiki with 435 stalls, making this property a convenient destination for locals and visitors.

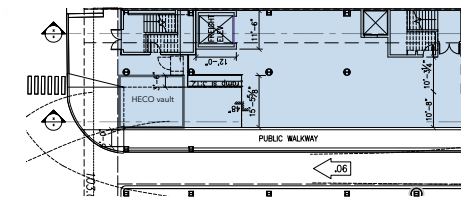
325 SEASIDE AVENUE CROSS SECTION



	GLA
Ground Floor	2,400 SF
Level 2	8,083 SF
Level 3 (existing auditorium)	8,742 SF
Total:	19,225 SF



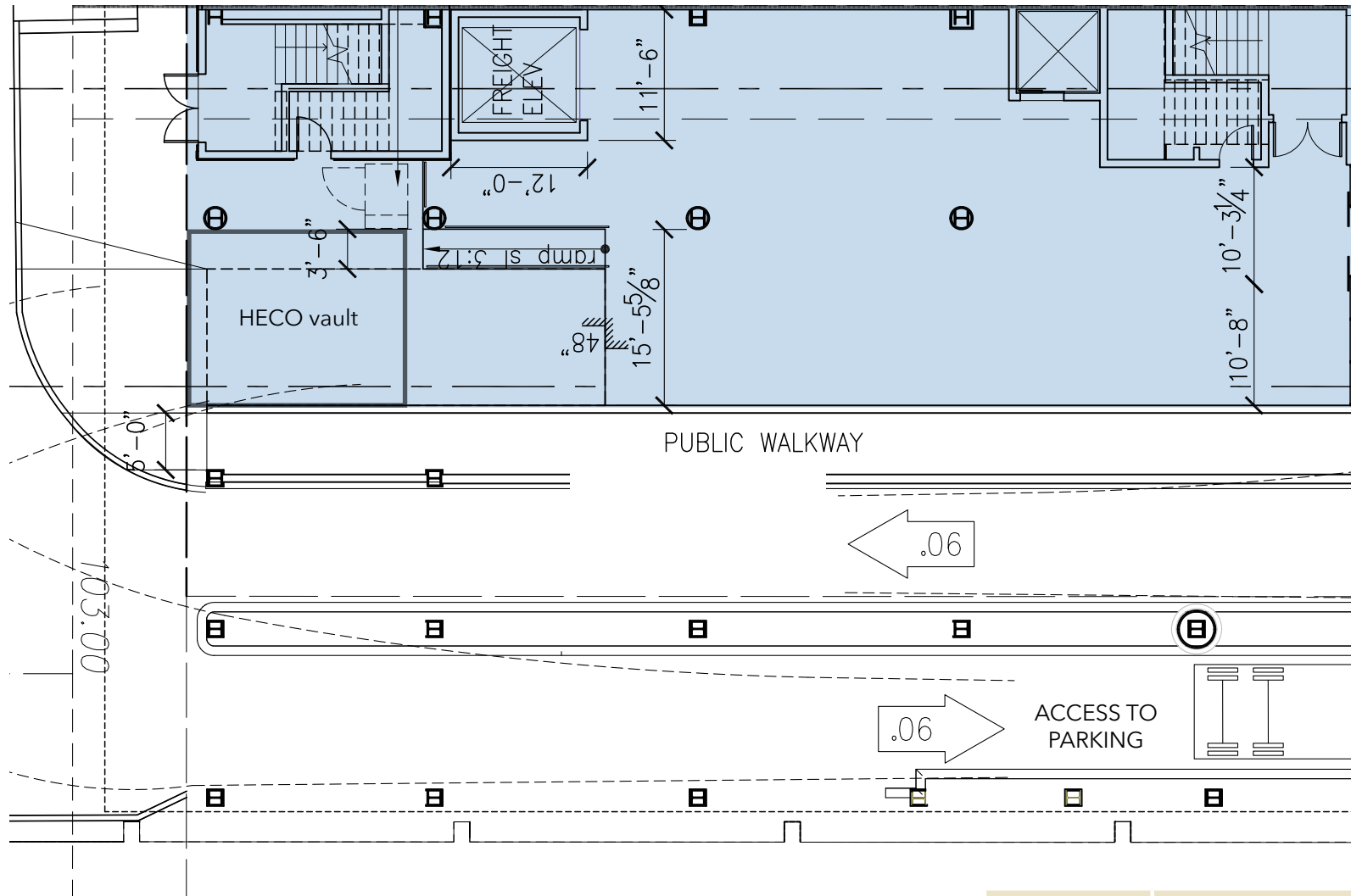
LEVEL 2



Ground Level Plan 1/32" = 1'-0"

GROUND LEVEL

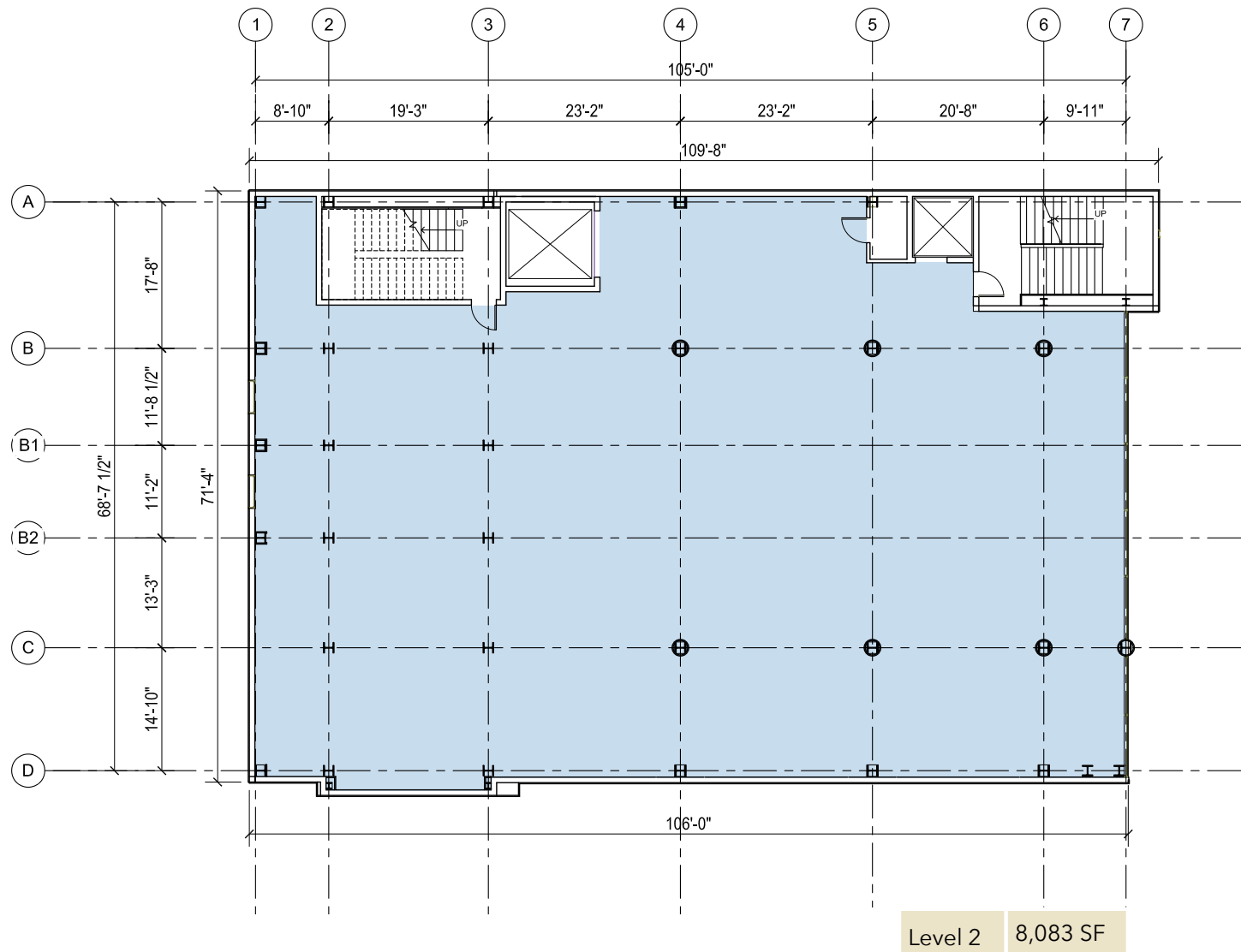
325 SEASIDE AVENUE **GROUND LEVEL**



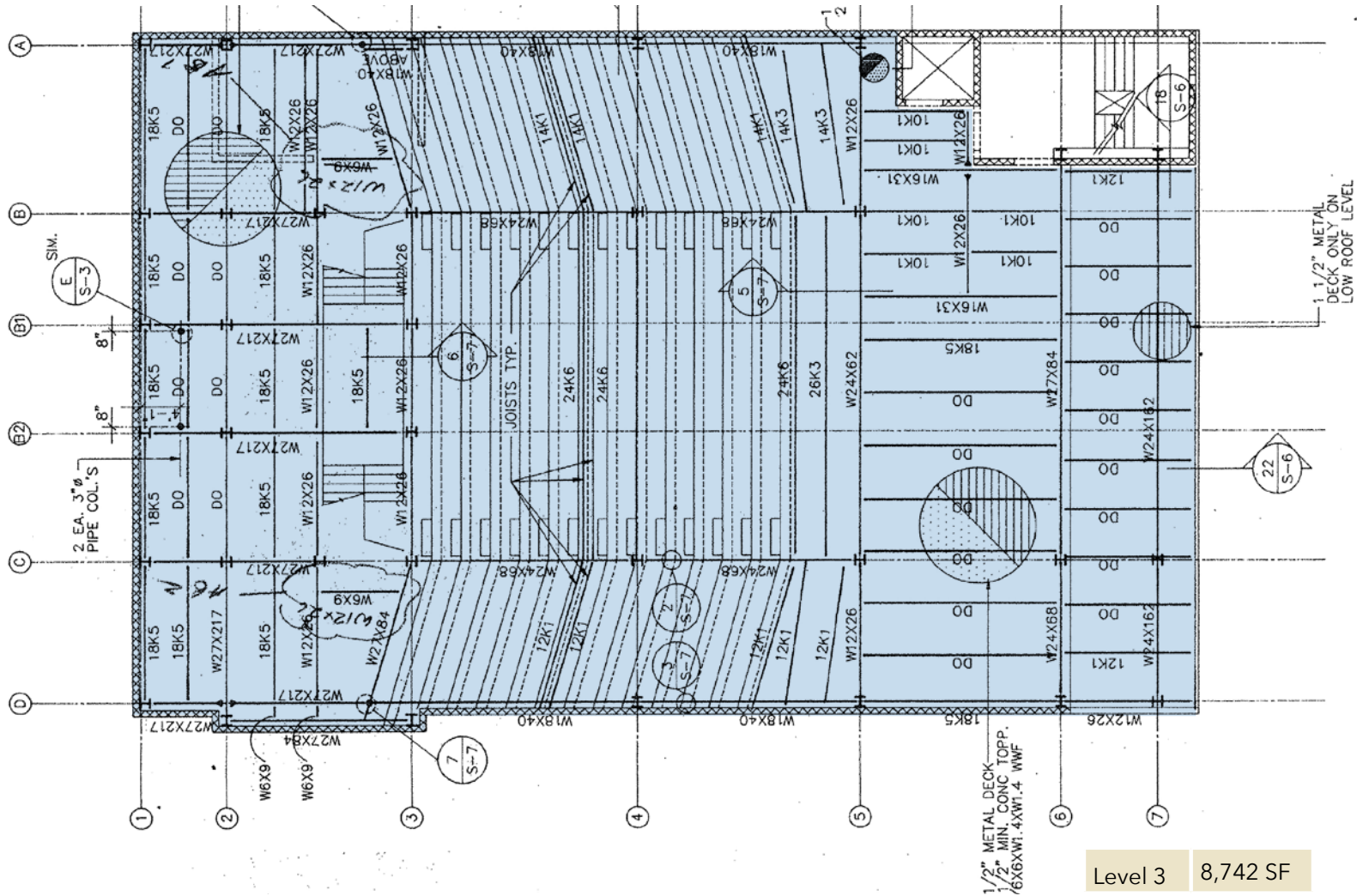
Seaside Avenue - 7,513 ADT

Ground Level 2,400 SF

325 SEASIDE AVENUE FLOOR PLAN: SECOND FLOOR



325 SEASIDE AVENUE FLOOR PLAN: THIRD FLOOR - EXISTING AUDITORIUM





WAIKIKI MARKET HIGHLIGHTS

30,787

Visitor Lodging
Units

22,731+

Waikiki Hotel
Rooms

99,194

Average Daily Visitor
Population On-island

30,441

Average Daily
Local Population

21,869

Average Daily
Employees

1.5 Million+

Square Feet
of Retail GLA

■ **Waikiki Retail:** Dior, Louis Vuitton, Gucci, Chanel, Hermès, Rolex, Yves Saint Laurent, Fendi, Balenciaga, Tiffany & Co., Valentino, Bottega Veneta, Prada, Moncler, Tesla, Jimmy Choo, Kith, Harry Winston, Salvatore Ferragamo, DFS, H&M, Urban Outfitters, Sephora, Victoria's Secret, UGG, Ross, Macy's, Quiksilver, Rip Curl, Volcom and many more

■ **Waikiki Restaurants:** The Cheesecake Factory, Tommy Bahama, P.F. Chang's, Hard Rock Cafe, Ruth's Chris Steak House, Yard House, Duke's Waikiki, Maui Brewing Co., Roy's, Paia Fish Market, StripSteak Waikiki, Marugame Udon, Poké Bar, Morimoto Asia and many more

This document has been prepared by The Beall Corporation for advertising and general information only. The Beall Corporation makes no guarantees, representations or warranties of any kind, expressed or implied, regarding the information including, but not limited to, warranties of content, accuracy and reliability. Any interested party should undertake their own inquiries as to the accuracy of the information. The Beall Corporation excludes unequivocally all inferred or implied terms, conditions and warranties arising out of this document and excludes all liability for loss and damages arising there from. This publication is the copyrighted property of The Beall Corporation and/or its licensor(s). © Copyright 2024. All rights reserved.



Scan or visit eepurl.com/c2rzHH to sign up for The Beall Corporation Newsletters and stay on top of Hawaii's Commercial Real Estate News

WWW.THEBEALLCORPORATION.COM

1120 12TH AVENUE, SUITE 301 | HONOLULU, HI 96816

BEALL CORP
RETAIL REAL ESTATE