



201 1ST STREET | PETALUMA, CA



FOR LEASE Vibrant Class “A” Office Space

Waterfront Office Building | Downtown Petaluma

JONES LANG LASALLE BROKERAGE, INC. CA REAL ESTATE LICENSE #: 01856260







PROPERTY HIGHLIGHTS

201 1st Street is located on the Petaluma River waterfront. It is adjacent to Petaluma's Theatre District, the region's premier downtown location, in the center of it all.



DESCRIPTION

-  Excellent access to Theatre District's shopping, dining, and fitness amenities
-  Abundant and convenient parking nearby
-  High visibility location and excellent branding opportunity
-  Prompt decision-making and uncomplicated negotiations by local, reputable owner



ADDRESS: 201 1st Street, Petaluma, CA

SIZE: ±1,400 - ±2,166 SF

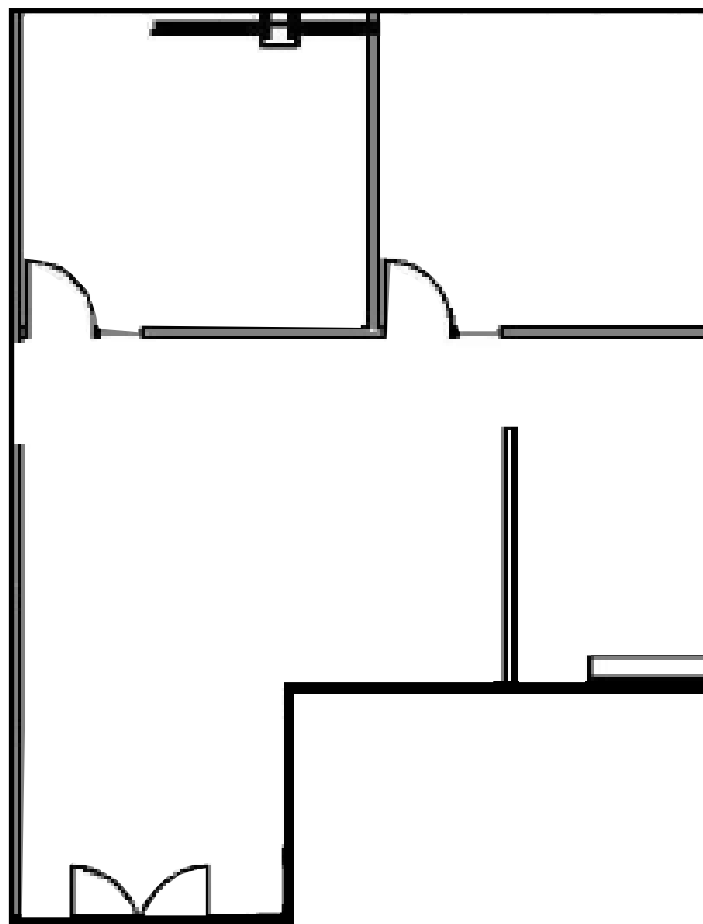
TYPE: Office

OWNED & MANAGED BY: Basin Street Properties

SUITE 206

±1,400 SF

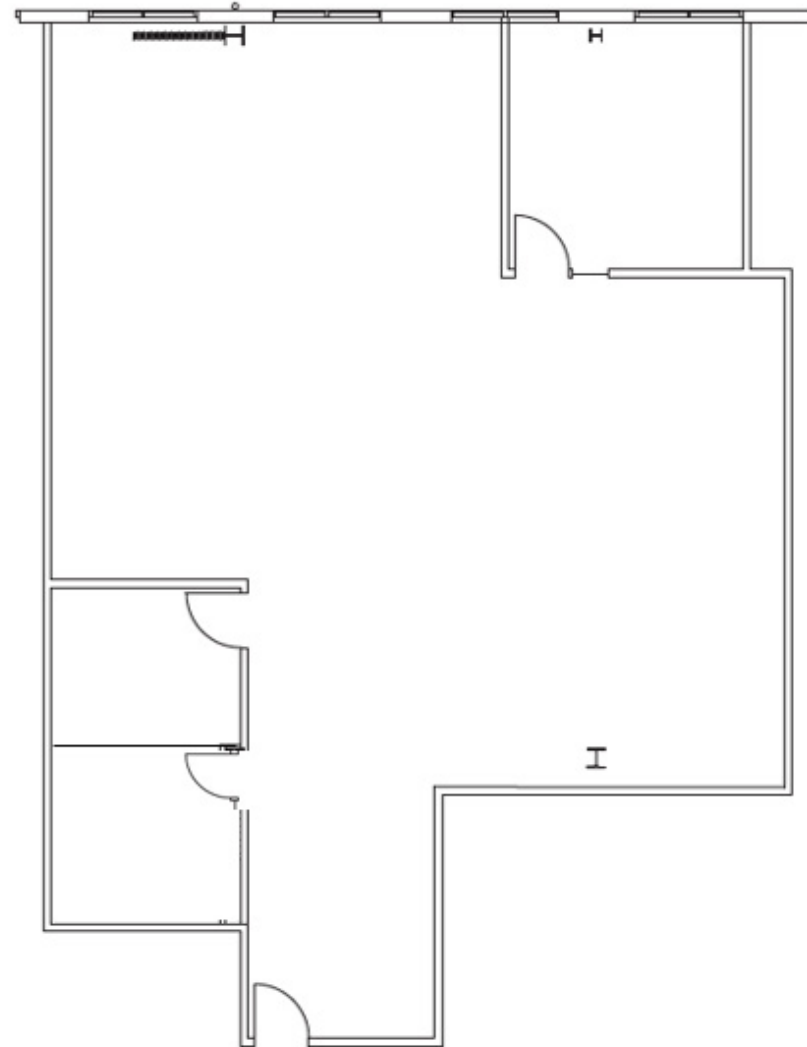
- Modern, creative office space
- Two (2) private offices
- Extensive glass-line
- Operable windows
- Available in 30 days



SUITE 211

±2,166 SF

- Modern, creative office space
- Three (3) private offices
- Operable windows



PROPERTY PHOTOS

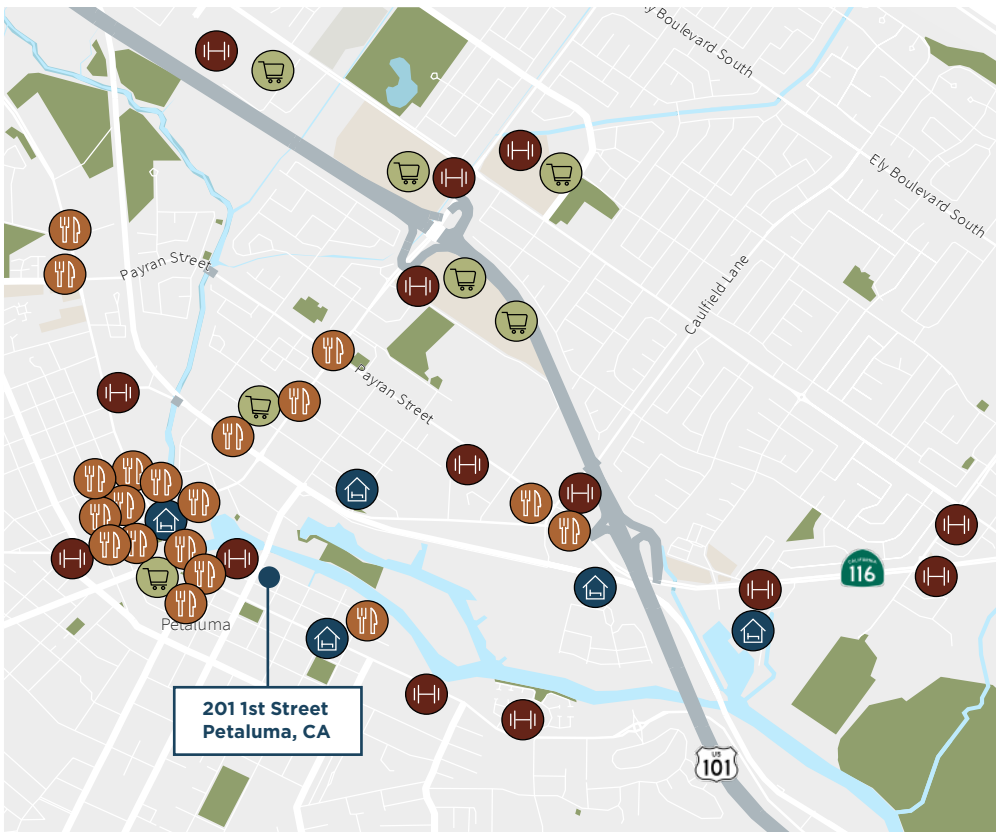


LOCATION AMENITIES

In the heart of charming Petaluma you will find the Theatre District. The region's premier open-air dining and retail destination venue, featuring local downtown shopping, savory eateries and entertainment.

Situated along the historic and scenic Petaluma River, visitors can shop, dine, and play the day away at this mixed-use lifestyle center.

Abundant Retail Amenities | Downtown Petaluma



Restaurants Fitness Hotels Retail

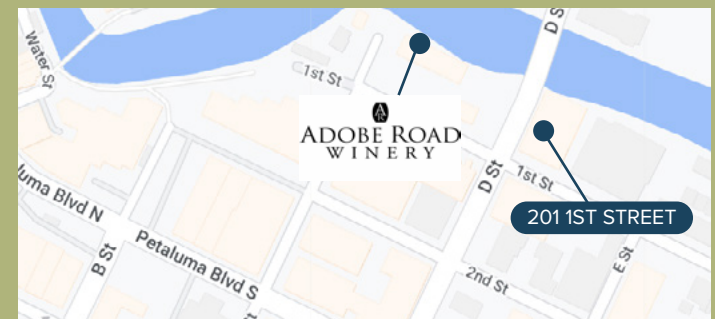


COMING 2025: Adobe Road Winery Waterfront Entertainment Complex

Click [HERE](#) to take a fly through tour of the project!



LOCATED ACROSS THE STREET
FROM 201 1ST STREET



FOR LEASE

201 1ST STREET | PETALUMA, CA

**For more information,
please contact:**

Tony Sarno
+1 707 217 7196
RE Lic# 01430933
tony.sarno@jll.com

Laura Duffy
+1 415 686 0255
RE Lic# 01922792
laura.duffy@jll.com

Glen Dowling
+1 415 299 6868
RE Lic# 00890450
glen.dowling@jll.com



BASIN STREET
PROPERTIES

Although information has been obtained from sources deemed reliable, neither Owner nor JLL makes any guarantees, warranties or representations, express or implied, as to the completeness or accuracy as to the information contained herein. Any projections, opinions, assumptions or estimates used are for example only. There may be differences between projected and actual results, and those differences may be material. The Property may be withdrawn without notice. Neither Owner nor JLL accepts any liability for any loss or damage suffered by any party resulting from reliance on this information. If the recipient of this information has signed a confidentiality agreement regarding this matter, this information is subject to the terms of that agreement. ©2025 Jones Lang LaSalle IP, Inc. All rights reserved.