

FOR LEASE

41615 EAST FLORIDA AVENUE
HEMET, CA

INDUSTRIAL
RETAIL
LAND
OFFICE



YOUR NAME HERE

YOUR NAME HERE






JANET F. KRAMER, JD, CCIM
951.600.8634 x702
janetk@svn.com
CalDRE #01351570



OFFERING SUMMARY

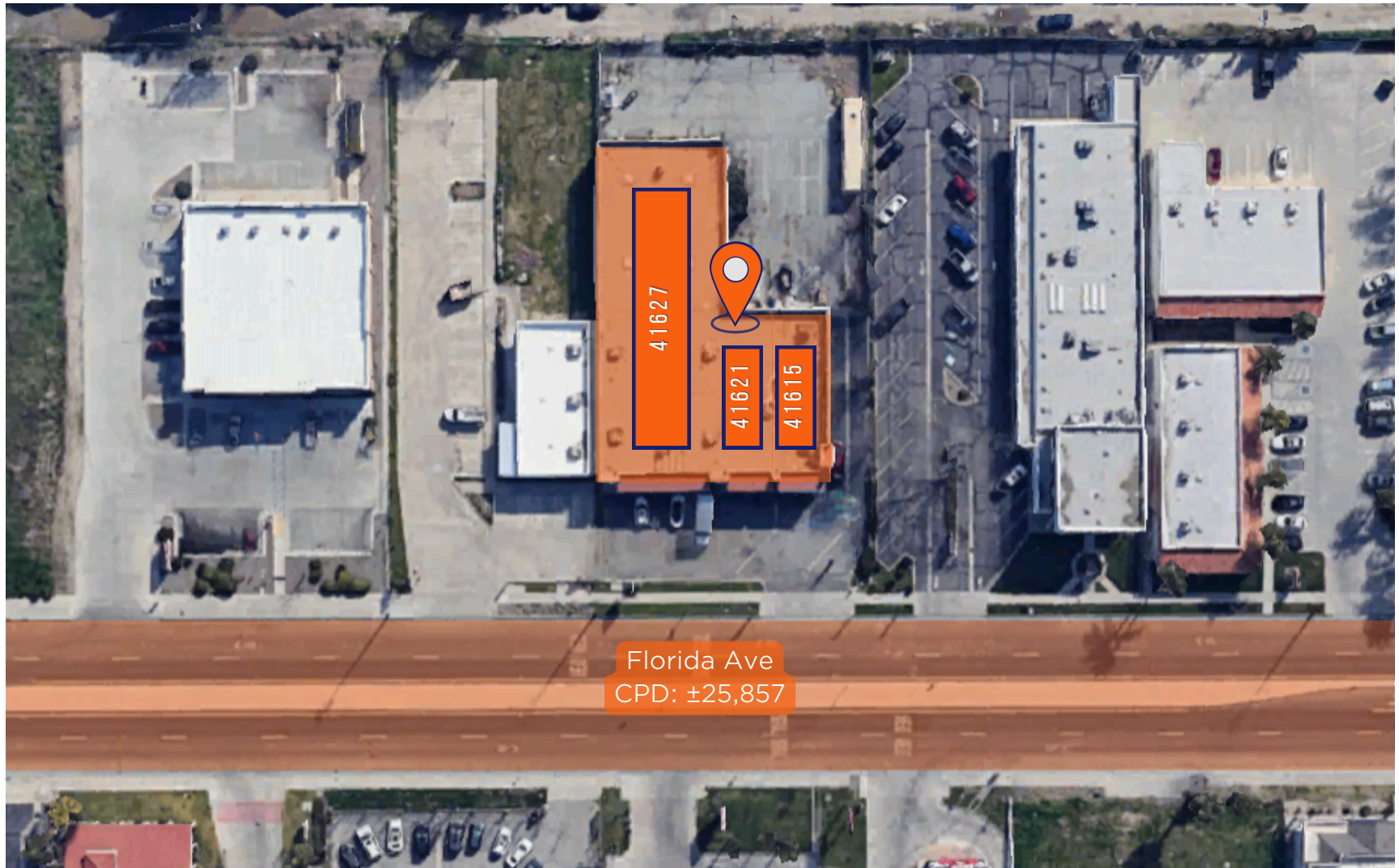
LEASE RATE:	\$1.25/SF/Month/NNN
NNN FEE:	\$0.35 SF
AVAILABILITIES:	±1,968 - 9861 SF Retail Suite
ZONING:	C1
MARKET:	Inland Empire

PROPERTY HIGHLIGHTS

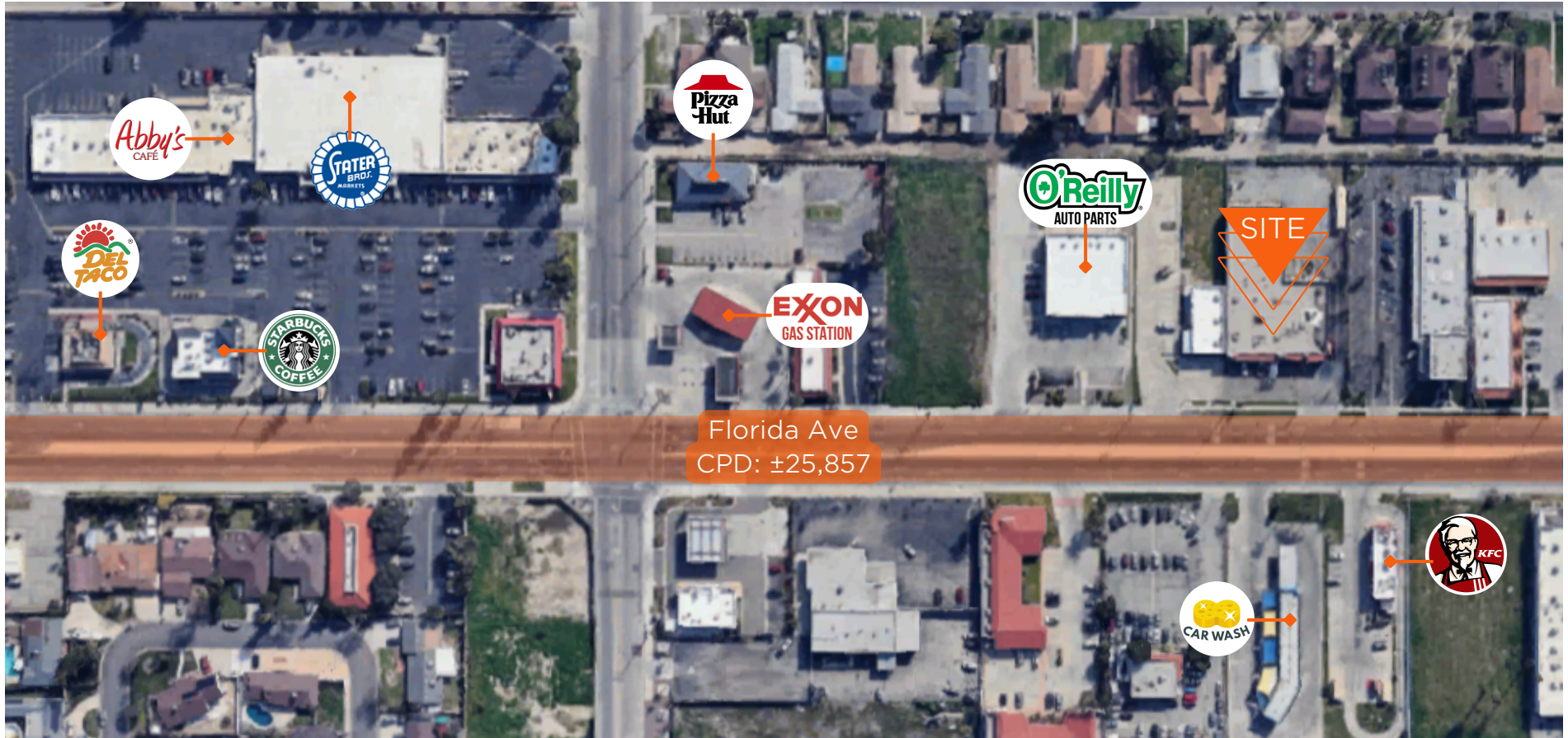
-  Signage Opportunities: Increase business visibility and brand recognition.
-  Prime Location: in the heart of East Hemet, benefiting from high traffic volumes
-  CPD: ±25,857 Florida Ave



JANET F. KRAMER, JD, CCIM
951.600.8634 x702
janetk@svn.com
CalDRE #01351570



JANET F. KRAMER, JD, CCIM
 951.600.8634 x702
 janetk@svn.com
 CalDRE #01351570



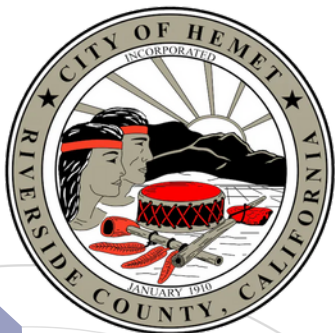
JANET F. KRAMER, JD, CCIM
951.600.8634 x702
janetk@svn.com
CalDRE #01351570



JANET F. KRAMER, JD, CCIM
951.600.8634 x702
janetk@svn.com
CalDRE #01351570

DEMOGRAPHICS

41615 EAST FLORIDA AVENUE | HEMET CA



- State** California
- County** Riverside
- Mayor** Jackie Peterson
- Website** hemetca.gov

POPULATION

Source: ESRI



88,607
POPULATION

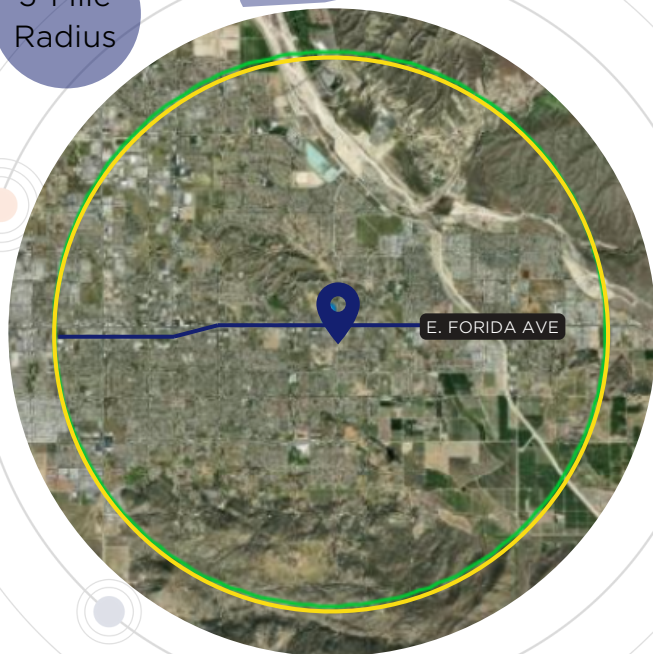


35.7
MEDIAN AGE



28,288
HOUSEHOLDS

3-Mile
Radius



EMPLOYMENT



50%
WHITE COLLAR



33%
BLUE COLLAR



23%
SERVICES



±38,632
EMPLOYED CIVILIANS

EDUCATION



33%
HIGH SCHOOL
GRADUATE



33%
SOME COLLEGE



15%
BACHELORS/GRAD/
PROF DEGREE

INCOME



23%
>\$100,000
ANNUAL INCOME



31%
>\$50,000
ANNUAL INCOME



\$128,896
MEDIAN NET
WORTH



JANET F. KRAMER, JD, CCIM
951.600.8634 x702
janetk@svn.com
CalDRE #01351570