

11530 & 11714 PARALLEL PKWY

KANSAS CITY, KS 66109

BOARDWALK
REALTY



HIGHLIGHTS

- 41 AC for Development
- Great Access to I-435 & K-7
- All Utilities to the Site
- Adjacent to the NEW American Royal Site

FOR SALE

\$625,0860

Haley Epps

Office: 913-871-7922

Mobile: 913-558-5958

Email: heppps@bwrealtykc.com

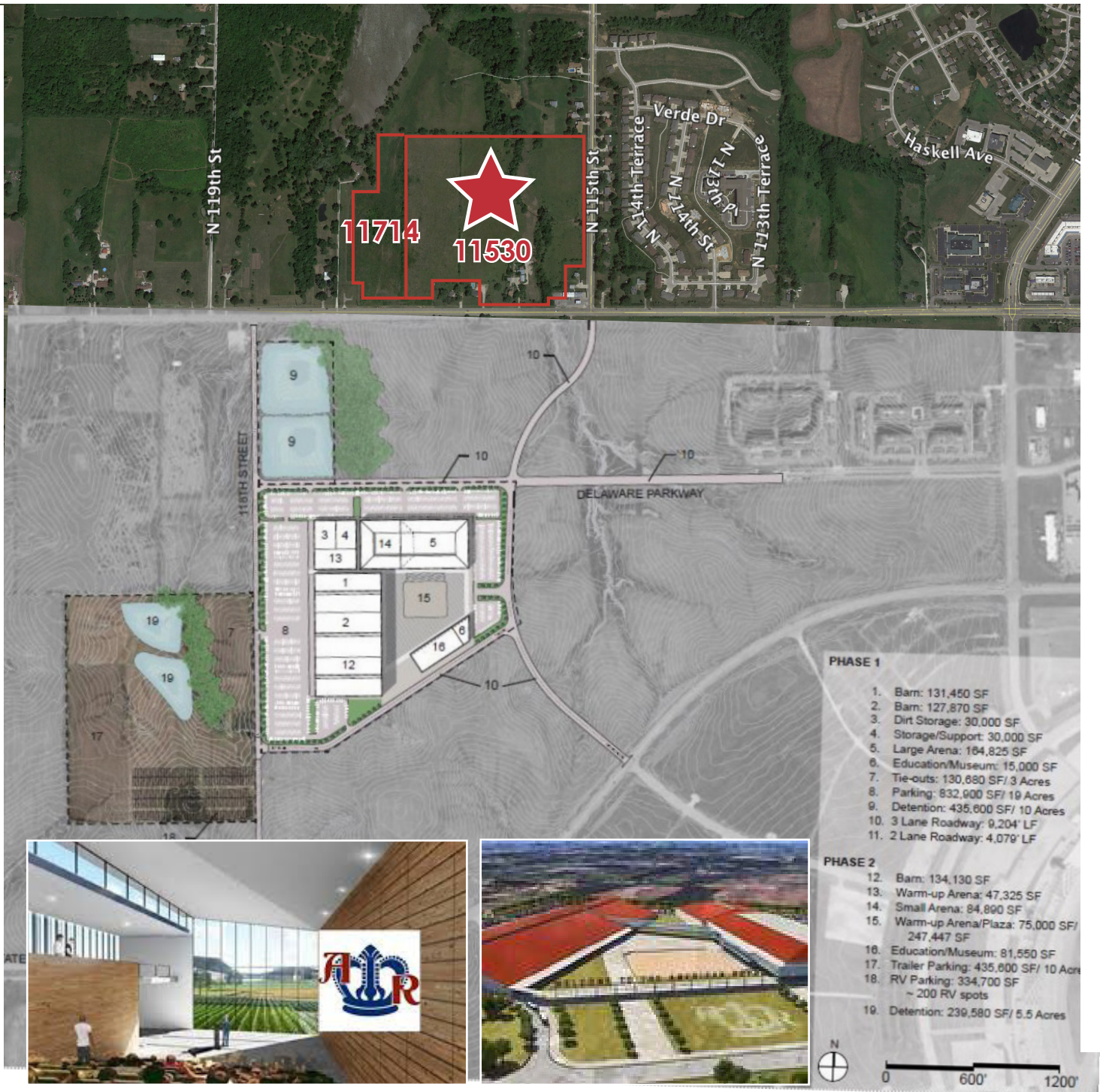
The information above has been obtained from sources believed reliable. While we do not doubt its accuracy we have not verified it and make no guarantee, warranty or representation about it. It is your responsibility to independently confirm its accuracy and completeness. Any projections, opinions, assumptions, or estimates used are for example only and do not represent the current or future performance of the property. You and your advisors should conduct a careful, independent investigation of the property to determine to your satisfaction the suitability of the property for your needs.

© 2018

AMERICAN ROYAL DEVELOPMENT

KANSAS CITY, KS 66109

BOARDWALK
REALTY



Haley Epps

Office: 913-871-7922

Mobile: 913-558-5958

Email: hepps@bwrealtykc.com

The information above has been obtained from sources believed reliable. While we do not doubt its accuracy we have not verified it and make no guarantee, warranty or representation about it. It is your responsibility to independently confirm its accuracy and completeness. Any projections, opinions, assumptions, or estimates used are for example only and do not represent the current or future performance of the property. You and your advisors should conduct a careful, independent investigation of the property to determine to your satisfaction the suitability of the property for your needs.

© 2018

11530 & 11714 PARALLEL PKWY

KANSAS CITY, KS 66109

BOARDWALK
REALTY

Wyandotte County, KS



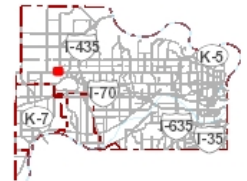
GeoSpatial Services

710 N 7th St, Suite 200 | Kansas City, KS 66101
Ph: 913-573-2941 | gss@wycokck.org
www.wycokck.org/gss

Legend

- Buildings
- Points of Interest
- Lakes
- Rivers
- Streams
- Parks*
- Unplatted Parcel
- ROW Parcel
- Platted Parcel
- Municipal Boundaries
- Railroads

Locator Map



Notes

Map Print Date: 1/9/2018 4:16 PM

626 0 313 626
Feet

Map Scale
1: 3,756



DISCLAIMER OF WARRANTY AND ACCURACY: Unified Government of Wyandotte Co./Kansas City, KS (UG) makes no representations or warranties about this map or its content, including, without limitation, accuracy, completeness, or fitness for any purpose. Users of this map document do so at their own risk; UG will not be liable to any such user for any loss or damage whatsoever.

Haley Epps

Office: 913-871-7922

Mobile: 913-558-5958

Email: hepps@bwrealtlykc.com

The information above has been obtained from sources believed reliable. While we do not doubt its accuracy we have not verified it and make no guarantee, warranty or representation about it. It is your responsibility to independently confirm its accuracy and completeness. Any projections, opinions, assumptions, or estimates used are for example only and do not represent the current or future performance of the property. You and your advisors should conduct a careful, independent investigation of the property to determine to your satisfaction the suitability of the property for your needs.

© 2018

11530 & 11714 PARALLEL PKWY

KANSAS CITY, KS 66109

**BOARDWALK
REALTY**

Wyandotte County, KS



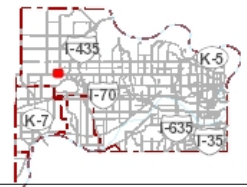
GeoSpatial Services

710 N 7th St, Suite 200 | Kansas City, KS 66101
Ph: 913-573-2941 | gss@wycokck.org
www.wycokck.org/gss

Legend

- Buildings
- Points of Interest
- Lakes
- Rivers
- Streams
- Parks*
- Unplatted Parcel
- ROW Parcel
- Platted Parcel
- Municipal Boundaries
- Railroads

Locator Map



Notes

Map Print Date: 1/9/2018 4:17 PM

626 0 313 626
Feet

Map Scale
1: 3,756



(c) 2015 Unified Government

DISCLAIMER OF WARRANTY AND ACCURACY: Unified Government of Wyandotte Co./Kansas City, KS (UG) makes no representations or warranties about this map or its content, including, without limitation, accuracy, completeness, or fitness for any purpose. Users of this map document do so at their own risk; UG will not be liable to any such user for any loss or damage whatsoever.

Haley Epps

Office: 913-871-7922

Mobile: 913-558-5958

Email: hepps@bwrealtlykc.com

The information above has been obtained from sources believed reliable. While we do not doubt its accuracy we have not verified it and make no guarantee, warranty or representation about it. It is your responsibility to independently confirm its accuracy and completeness. Any projections, opinions, assumptions, or estimates used are for example only and do not represent the current or future performance of the property. You and your advisors should conduct a careful, independent investigation of the property to determine to your satisfaction the suitability of the property for your needs.

© 2018