



## Fortune Plaza

6622 Southpoint Drive South  
Jacksonville, Florida 32216

Spaces	Lease Rate	Space Size
190	\$22.00 SF/yr	3,528 SF
310	\$22.00 SF/yr	6,635 SF

### Property Highlights

- Landmark Southpoint building highly visible from JTB & I-95
- Four-story atrium with water features & lush indoor landscape
- On-site deli/cafe
- Conveniently located near retail, restaurants & banking
- Under new ownership
- Abundant parking available

### Property Overview

Located in one of Jacksonville's best-performing submarkets, this world-class office and financial center sit on a 3.44-acre campus immediately accessible to the JTB/I-95 interchange.

### For More Information



#### Tiffany Wein

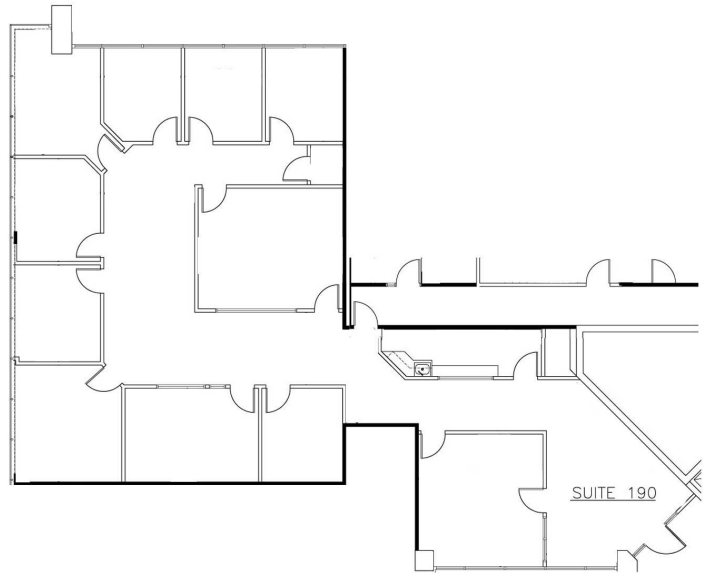
Senior Associate  
O: 904 404 4453 | C: 904 315 7162  
tw@naihallmark.com



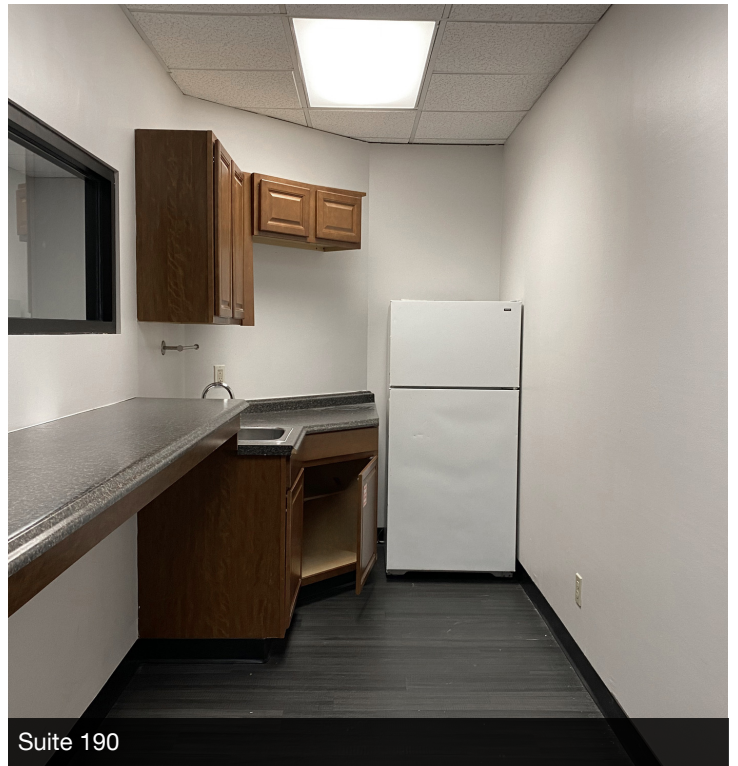
#### Chris Ware

Senior Associate  
O: 904 512 7590 | C: 904 553 2677  
cww@naihallmark.com



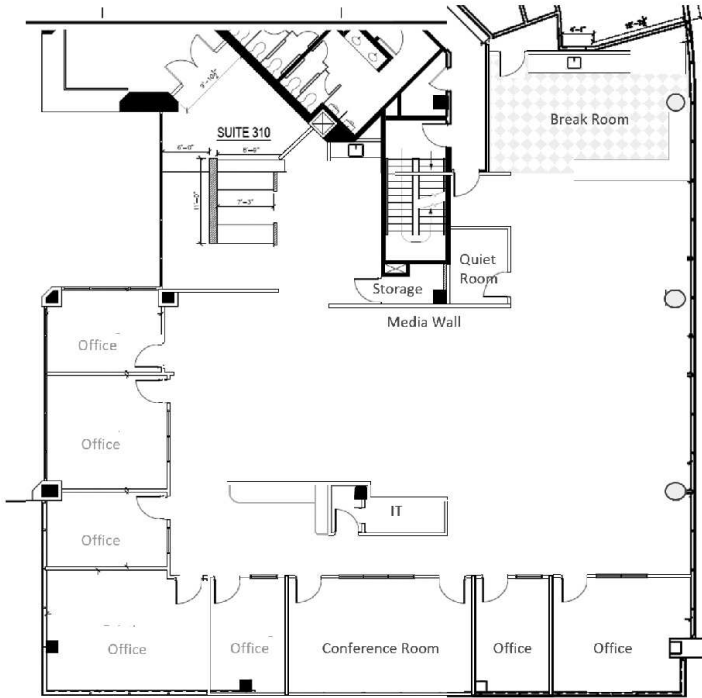


Suite 190





For Lease  
3,528 - 6,635 SF  
Office Space



Suite 310 - 6,635 SF



Suite 310



Suite 310



Suite 310



Suite 310



Suite 310











