

11000

➤ 11000 Broken Land Parkway  
Columbia, MD 21044



MERRIWEATHER DISTRICT

Howard Hughes  
COMMUNITIES

# 11000

Merriweather District's 11000 Broken Land Parkway delivers modern office space steps from dining, wellness, and lifestyle amenities. New indoor and outdoor spaces foster collaboration and community creating an unmatched office environment.

## FEATURES

TOTAL BUILDING SIZE: 168,647 SF

NUMBER OF FLOORS: 9

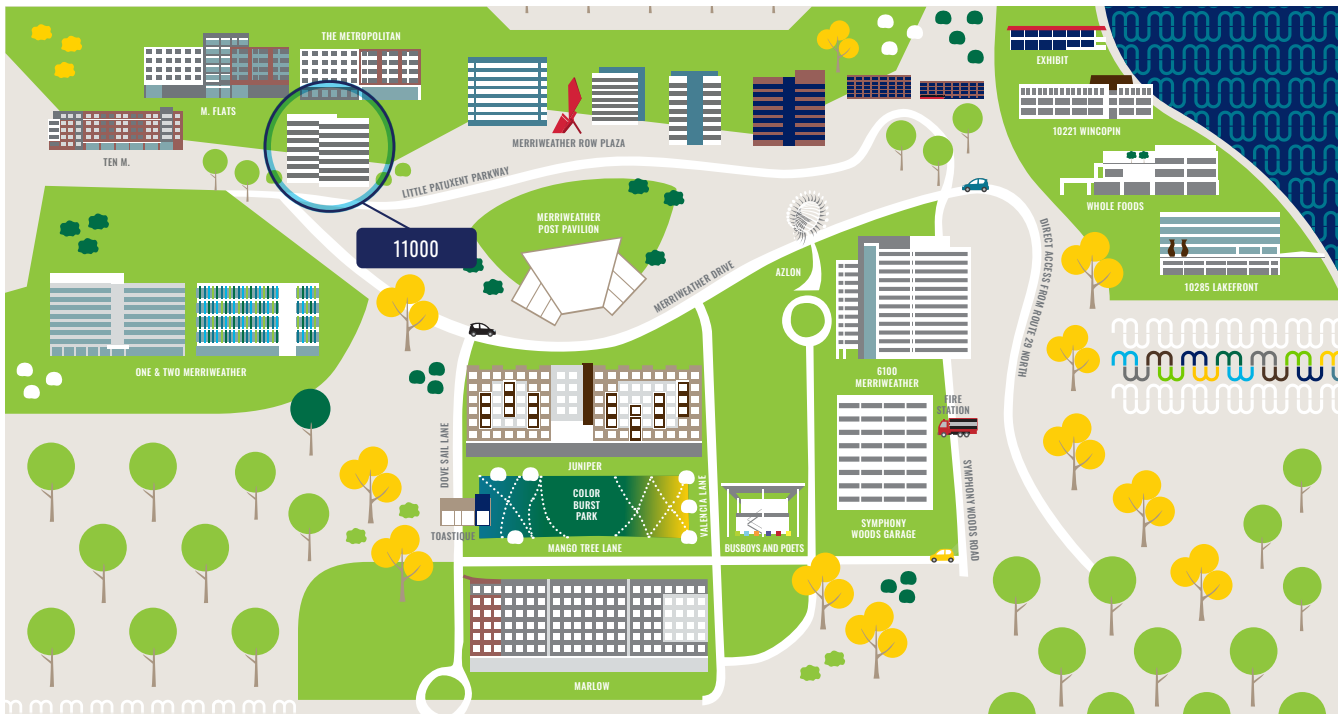
AVERAGE FLOOR PLATE: 18,738 SF

YEAR BUILT/RENOVATED: 1992/2022

PARKING: Free Surface & Garage Covered

AMENITIES: Conference Center, On-site Deli, Modern Lobby, Access to Amenity Lounge, Fitness Center

INTERNET PROVIDERS: Verizon, AT&T, CenturyLink, Comcast



RICH THOMAS, CCIM  
410.591.3881  
RICHARD.THOMAS@CUSHWAKE.COM

MATT MELNICK  
410.913.1784  
MATTHEW.MELNICK@CUSHWAKE.COM

PAT CRILLEY  
301.787.7730  
PAT.CRILLEY@CUSHWAKE.COM