

BAYSIDE REALTY PARTNERS PRESENTS

3400 California Street San Francisco, California

Top Floor Medical / Dental Office Space in Laurel Heights



TRASK LEONARD
President and CEO
650.533.2591
tleonard@baysiderp.com
DRE#01152101



GRACE LINDBERG
Vice President
415.307.0252
glindberg@baysiderp.com
DRE#02230832



3400 California Street

San Francisco, California

LOCATION

- Close to restaurants and shops on California Avenue
- Laurel Village shops, across the street
- Family-friendly neighborhood
- One dedicated parking spot included with each Suite
- Laurel Village Parking Lot across the street. Public parking with 90-minute limit
- Surface parking



BUILDING

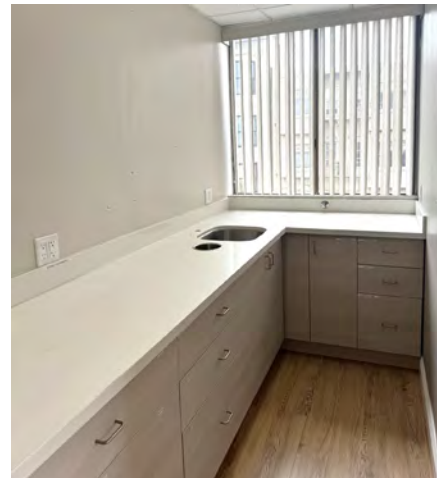
- Medical/Dental Building in great location of Laurel Heights
- Corner of California Street and Laurel Avenue
- Recently renovated elevator that services all three floors
- Both suites fully plumbed for medical/dental practices

3400 California Street

San Francisco, California



SUITE 301

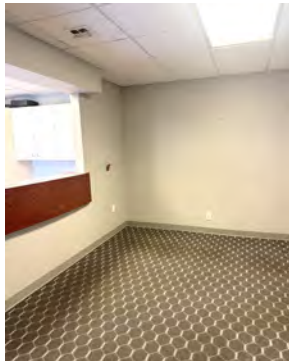


3400 California Street

San Francisco, California

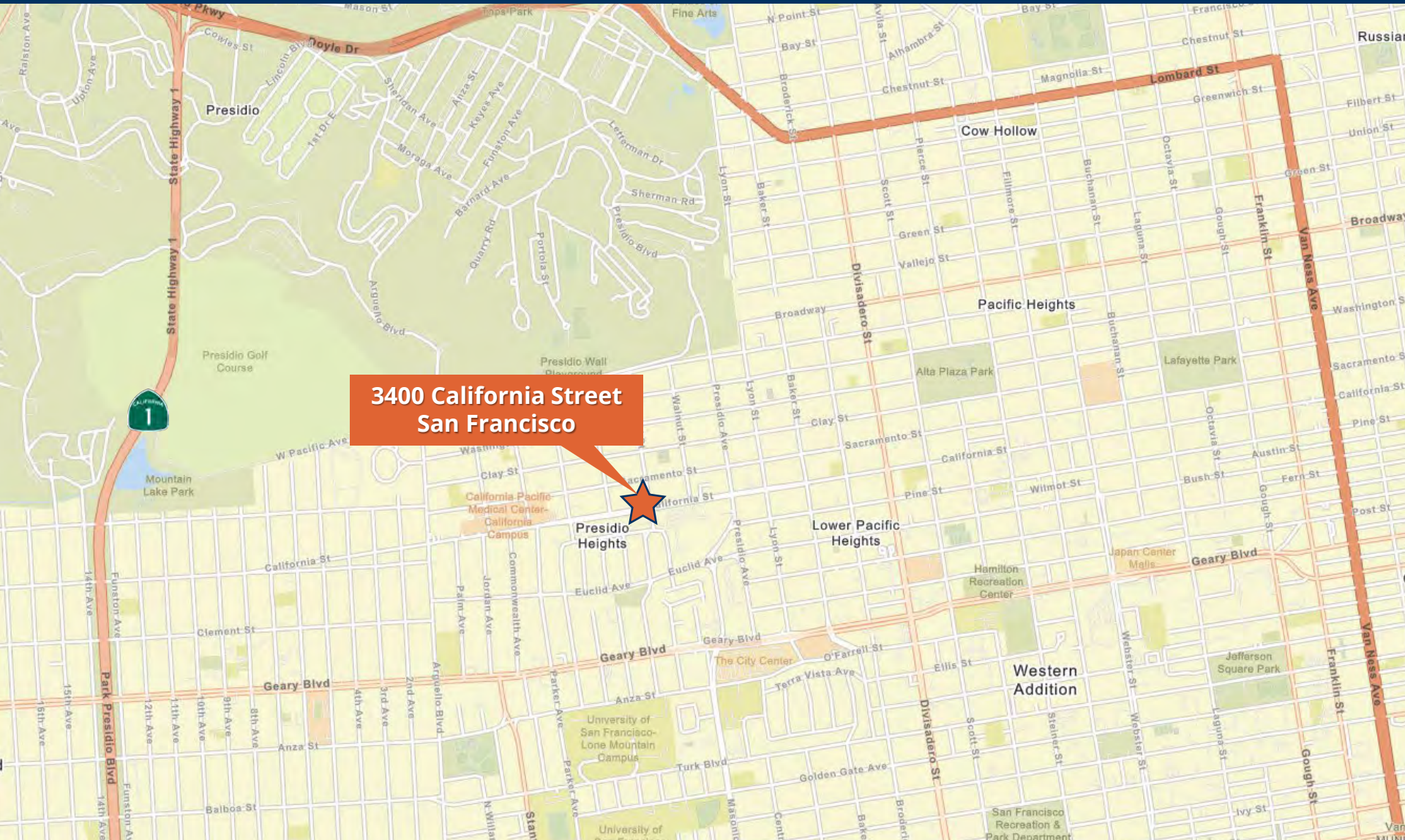


SUITE 302



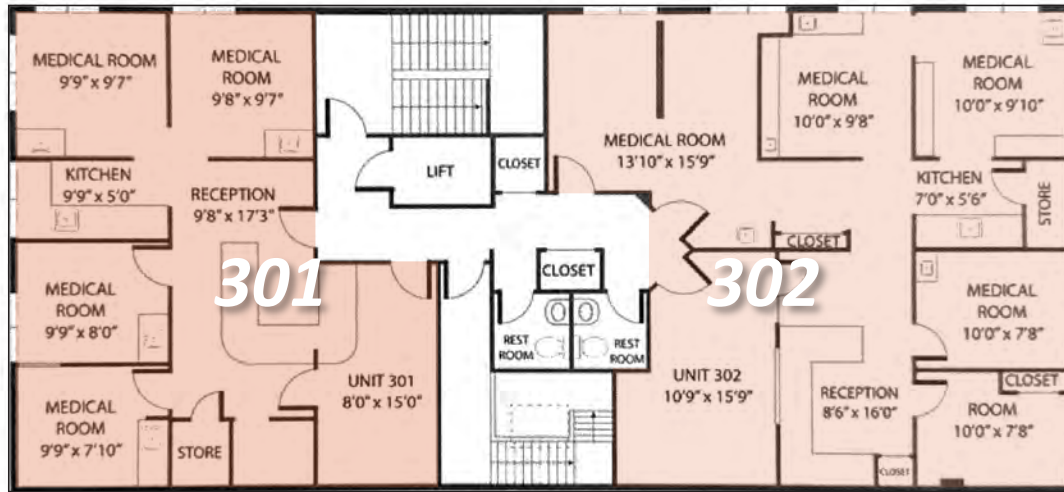
3400 California Street

San Francisco, California



3400 California Street

San Francisco, California



THIRD FLOOR

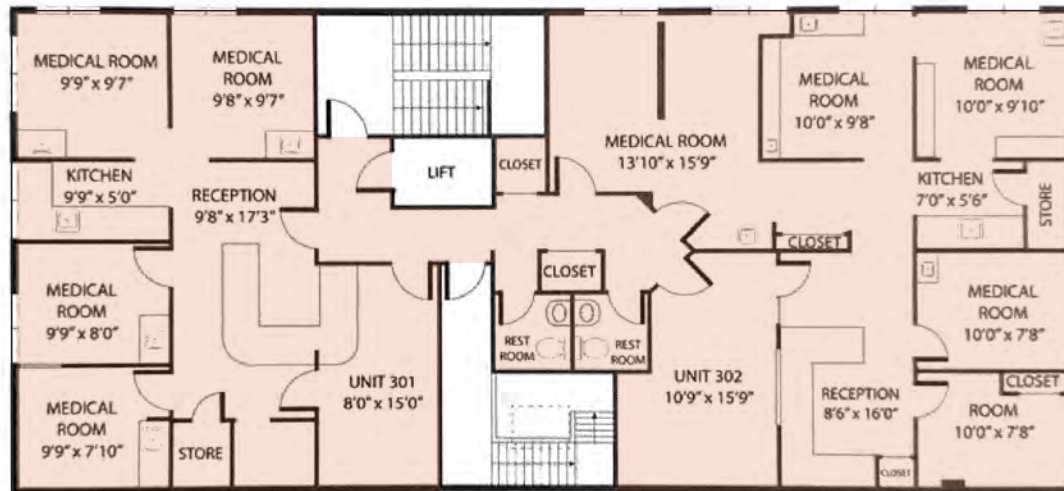
Suite 301 1,159 RSF

4 exam rooms, reception, waiting area, sterilization/kitchen and small office

Suite 302 1,426 RSF

6 exam rooms, reception, waiting area, sterilization/kitchen and storage

Both suites fully plumbed for medical/dental practices



FULL THIRD FLOOR

Suite 301 and 302 2,585 RSF

Suite 301 and Suite 302 combined, plus storage and 2 restrooms

Meet Your Expert Team



TRASK LEONARD

President and CEO

650.533.2591

tleonard@baysiderp.com

DRE#01152101



GRACE LINDBERG

Vice President

415.307.0252

glindberg@baysiderp.com

DRE#02230832

DOMINANT. EXPERT. INFLUENTIAL.

BAYSIDE REALTY PARTNERS

The preeminent provider of management, leasing, construction management and accounting services for healthcare properties.



MARKET LEADER

- Leasing & Property Management
- Investment Sales
- Tenant Representation
- Construction Management
- Property Repositioning



INFLUENTIAL NETWORK

- Institutional Investors
- Healthcare Systems and Healthcare Districts
- Physicians & Districts
- Private Investors



DOMINANT FOOTPRINT

- 2 million SF leased & managed
 - 50+ MOB portfolio
 - 10,000-240,000 SF
 - 500,000 SF portfolio
- San Francisco's largest MOBs
- 950+ leases executed
- 500+ medical and dental tenants

DOMINANT. EXPERT. INFLUENTIAL.