



Central Park Place

5100 Marsh Rd
Okemos, Michigan 48864

Property Highlights

- Prime retail location near the Meridian Mall
- Excellent street exposure with high traffic volume
- Surrounded by Walmart, Chili's, Olive Garden, Culvers, Aldi, Kroger, PetSmart, Target & Home Depot
- Signage available on Marsh Rd
- Suite E1 - 2,519 SF - Immediately available
- Suite E3 - 2,950 SF - Immediately available
- Suite F1 - 2,150 SF - Immediately available

Offering Summary

Lease Rate:	\$14.00 SF/yr (NNN)
Building Size:	74,000 SF
Available SF:	2,150 - 2,950 SF

For More Information

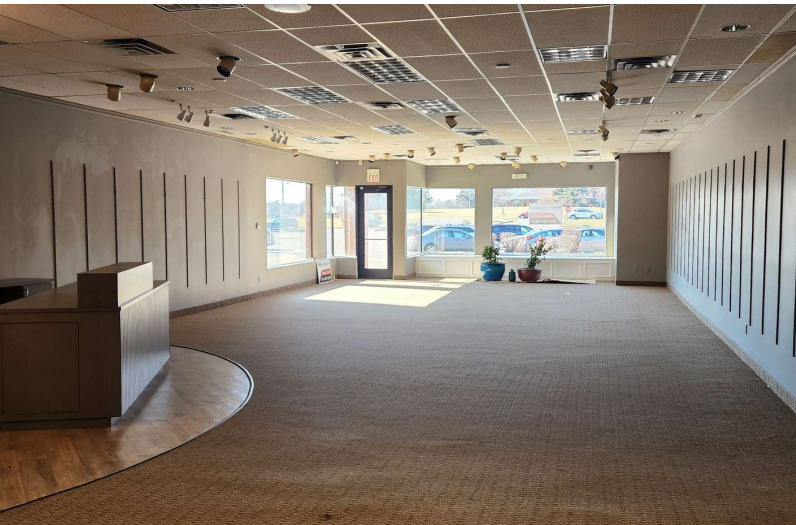


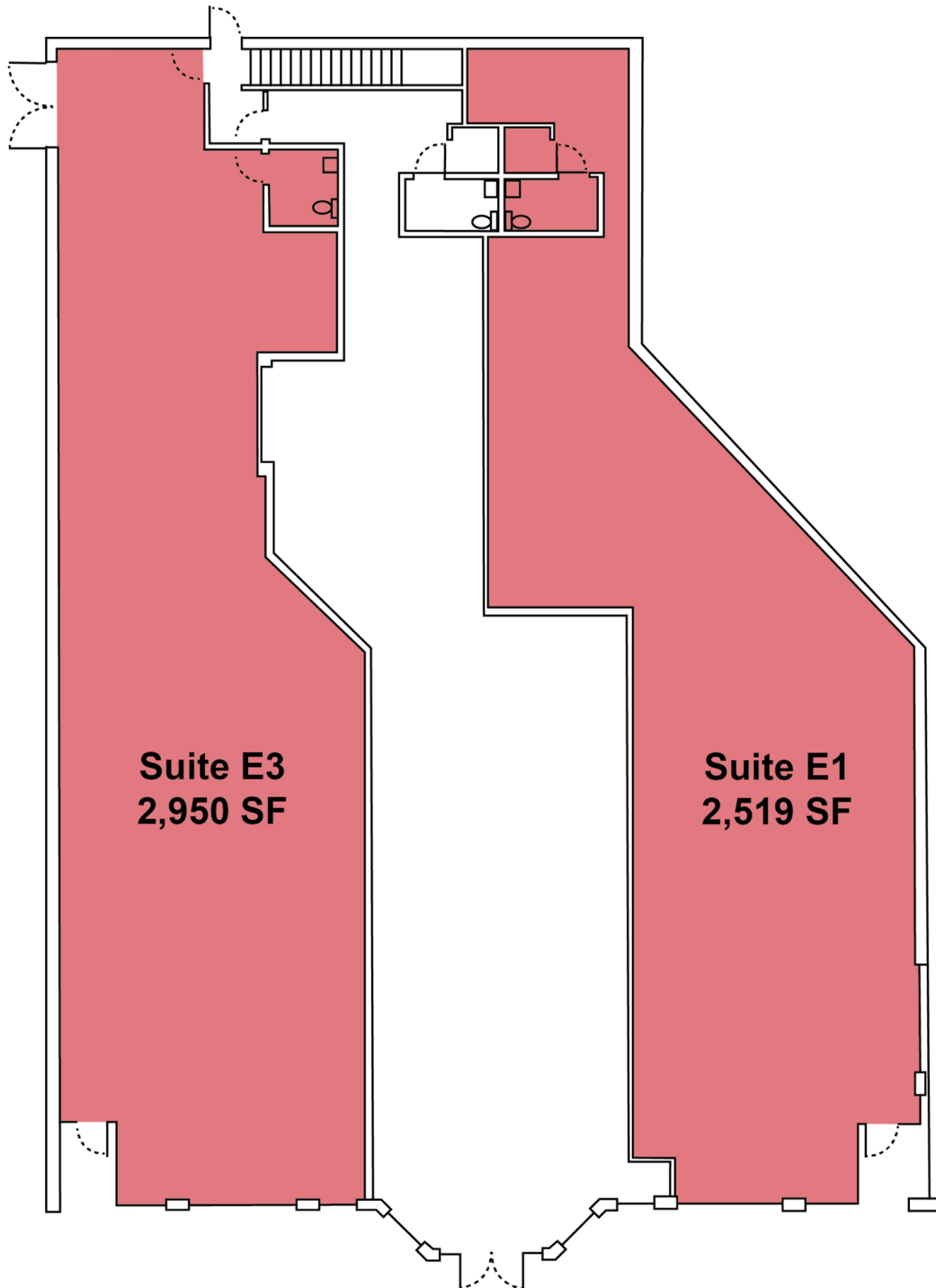
Jeffrey Branch

Commercial Advisor

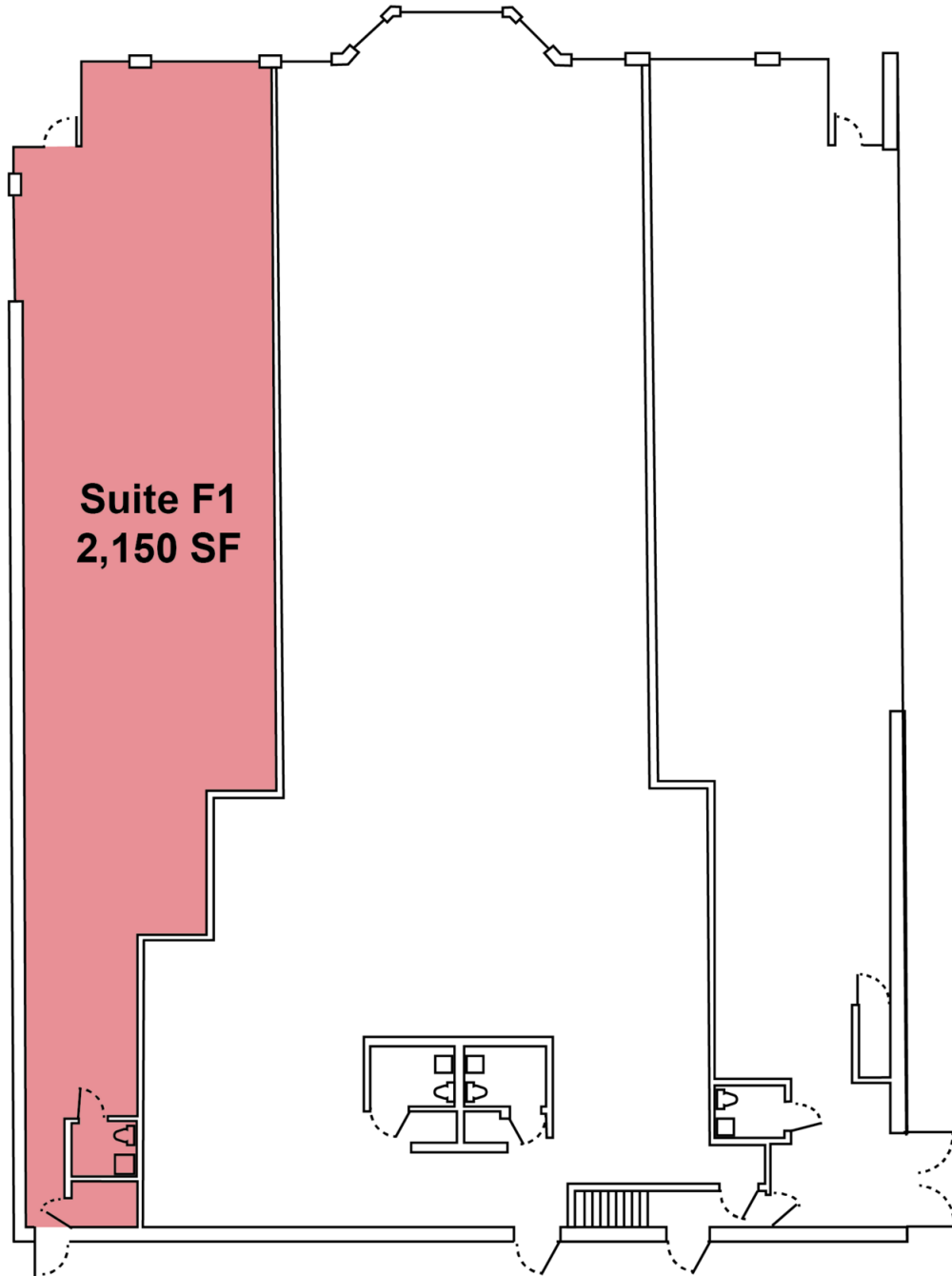
O: 517 487 9222 | C: 517 899 6368

jbranch@naimidmichigan.com





**Central Park Place
Building E**

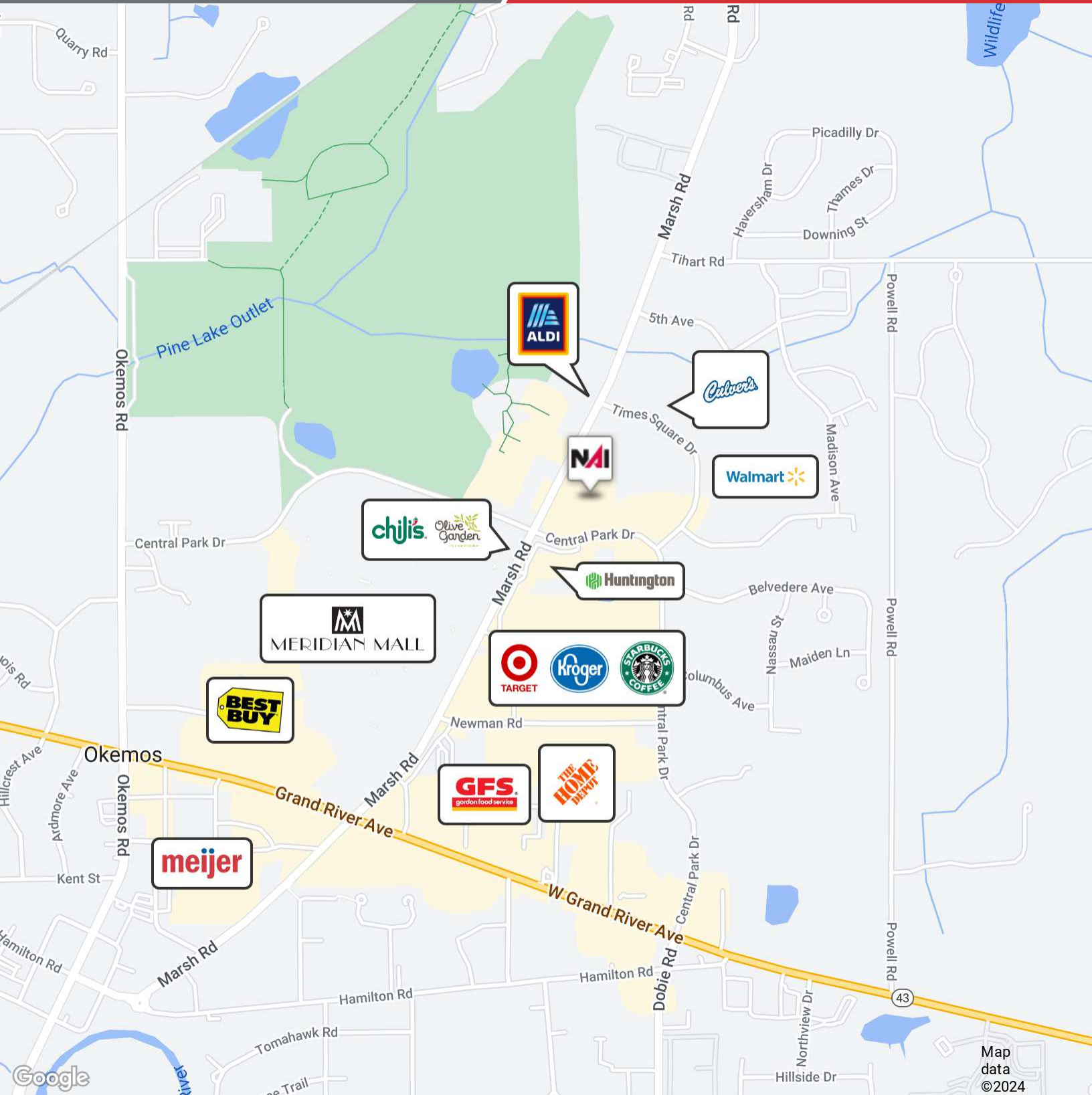


**Central Park Place
Building F**

For Lease

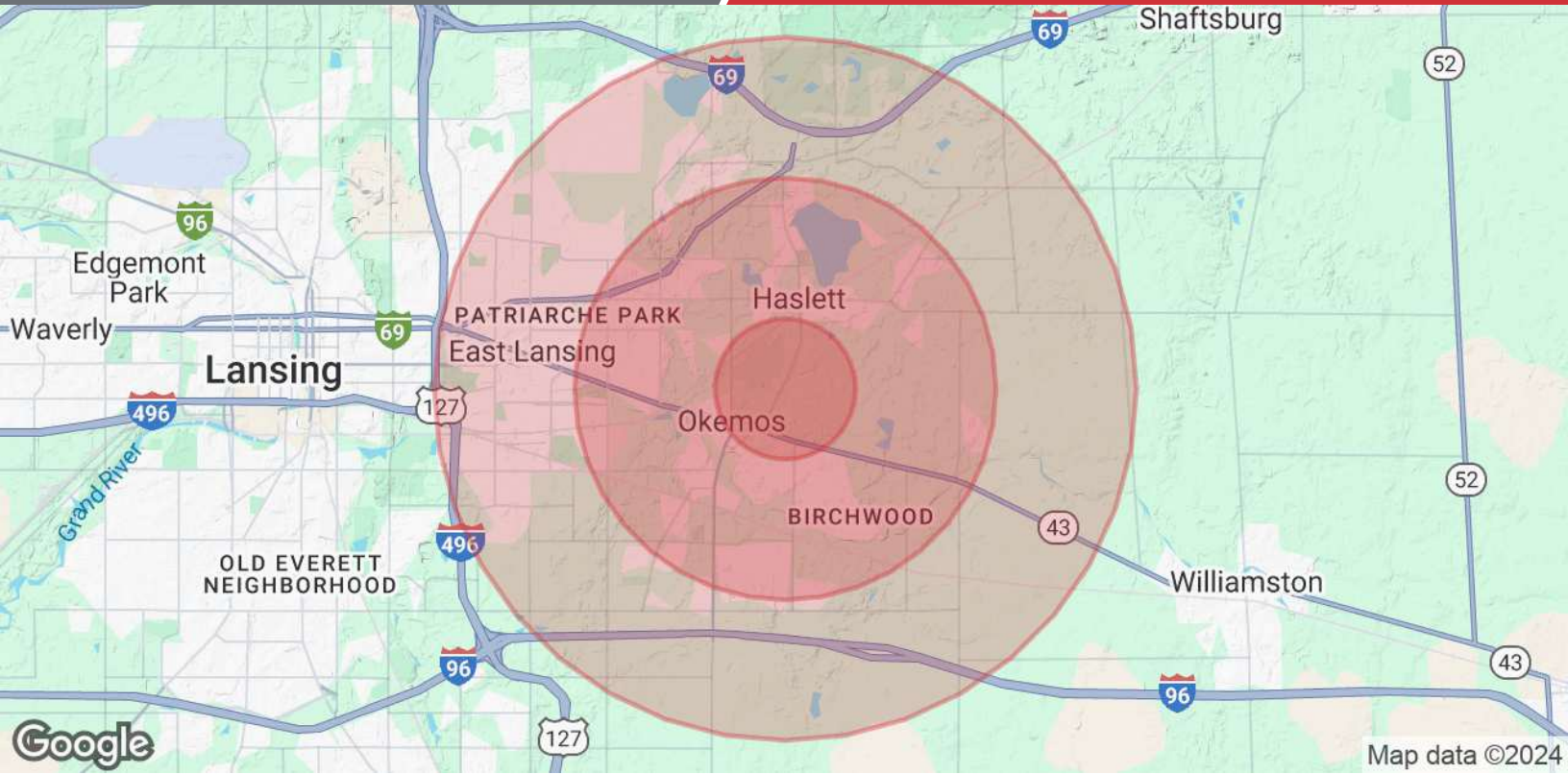
2,150 - 2,950 SF | \$14.00 SF/yr

Retail Space



NO WARRANTY OR REPRESENTATION, EXPRESS OR IMPLIED, IS MADE AS TO THE ACCURACY OF THE INFORMATION CONTAINED HEREIN, AND THE SAME IS SUBMITTED SUBJECT TO ERRORS, OMISSIONS, CHANGE OF PRICE, RENTAL OR OTHER CONDITIONS, PRIOR SALE, LEASE OR FINANCING, OR WITHDRAWAL WITHOUT NOTICE, AND OF ANY SPECIAL LISTING CONDITIONS IMPOSED BY OUR PRINCIPALS NO WARRANTIES OR REPRESENTATIONS ARE MADE AS TO THE CONDITION OF THE PROPERTY OR ANY HAZARDS CONTAINED THEREIN ARE INTENDED TO BE IMPLIED

2149 Jolly Road, Suite 200
Okemos, MI 48864
517 487 9222 tel
naimidmichigan.com



Population	1 Mile	3 Miles	5 Miles
Total Population	5,097	39,264	87,701
Average age	37.9	37.5	33.9
Average age (Male)	38.2	37.1	33.5
Average age (Female)	37.2	38.0	34.4
Households & Income	1 Mile	3 Miles	5 Miles
Total households	2,474	17,148	33,094
# of persons per HH	2.1	2.3	2.7
Average HH income	\$70,723	\$80,119	\$76,800
Average house value		\$257,098	\$245,855

* Demographic data derived from 2020 ACS - US Census