

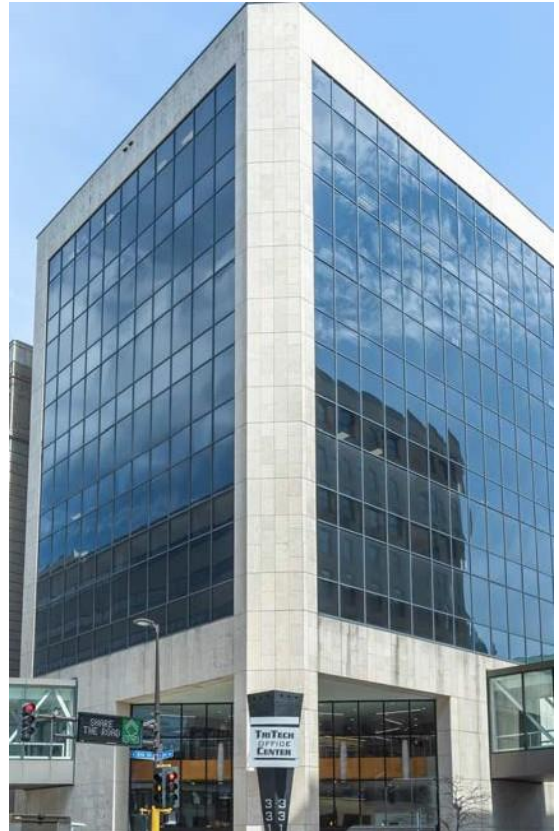
Expansive TriTech Center

331 2nd Avenue South, Minneapolis, MN

Strategically positioned in downtown Minneapolis between Target Field and U.S. Bank Stadium and five blocks from the Mississippi River, Expansive TriTech Center offers easy access to the courthouses, surrounding office towers, hotels, and dining. This modernist glass and concrete building completed in 1982 features nine stories of floor-to-ceiling views, contemporary amenities, skyway connectivity and bike storage.

Access:

Two blocks from light rail via Nicollet Mall or Government Plaza Station seven blocks to I-394.



📍 TriTech Center

A La Carte Turn Key Lease Services:

- Furniture Programming and Procurement
- Ready-To-Go Wifi Internet
- Modular In-Suite Phone Booths
- Keyless Suite Access System

Expand Your Space On Demand With Expansive™ Workspace Amenities:

- Meeting Rooms
 - Collaboration spaces of varying sizes for short term usage — great for interviews, team huddles, training, and more. Includes A/V equipment. *\$50 per hour*
- On Demand Day Offices:
 - Fully furnished private offices are also available for day use, based on availability. *\$89 per day*
- Expansive Lounge Pass
 - Access to the Expansive coworking lounge and Kitchen including free coffee and tea service, and an a la carte snack bar. *\$135 per user per month*

Additional Property Amenities:

- Storage
 - Multiple sizes of on-site storage with easy access to help manage inventory, equipment, supplies or other needs. *Starting at \$35 per month*
- On-Site Data Center
 - On-site secure storage for your data needs. *Pricing customized to your needs*
- Mothers Room
 - Free for nursing mothers in the building
- Indoor Bike Storage
 - Free for office tenants

Expansive Find Your Place

Powered by the largest portfolio of nationwide owned and operated flex space office buildings, Expansive offers workspaces where people and companies thrive.

Because we believe success is about both business and belonging, Expansive creates inclusive, productive environments for collaboration and engagement in vibrant professional communities.

With 44 locations and counting, Expansive leverages unparalleled flexibility, support, and value to maximize the return on your workspace investment.

We offer dedicated, shared, and on-demand flex space, event venues, storage, parking, and traditional long-term leases across our property portfolio.



3.7M
Square Feet
of Workspace

2012
Founded

40+
US Locations

33
Cities