

3780 Tradeport Court

Lockbourne, OH 43137



±508,775 SQ. FT AVAILABLE

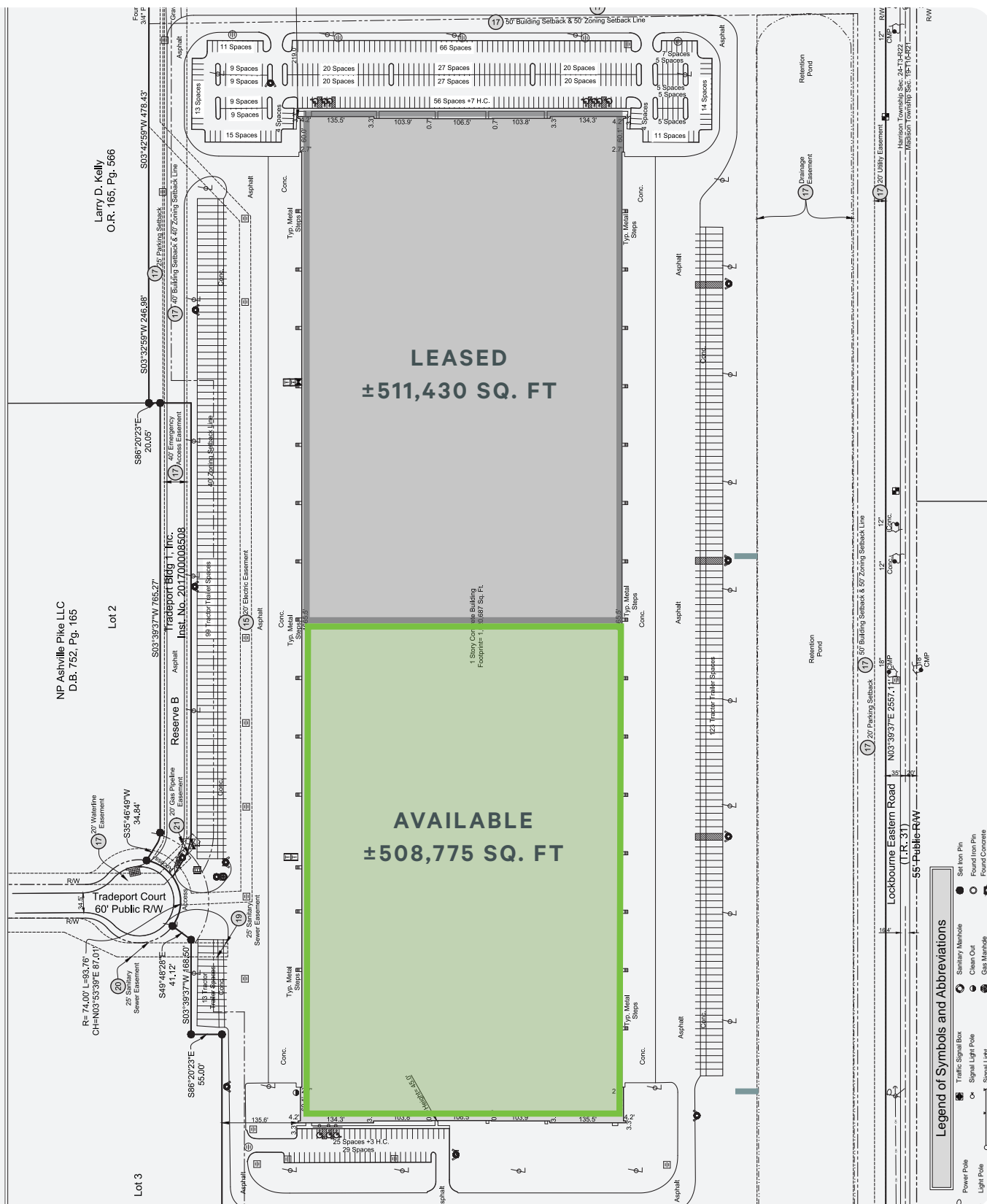
- » Located in Rickenbacker, which has a 2.4% vacancy rate
- » Available immediately
- » ±6.0 Miles to I-270, and close to I-71 and I-70
- » 10-hour truck drive to 47% of US population

Owned by
maple^{tree}

Property Details

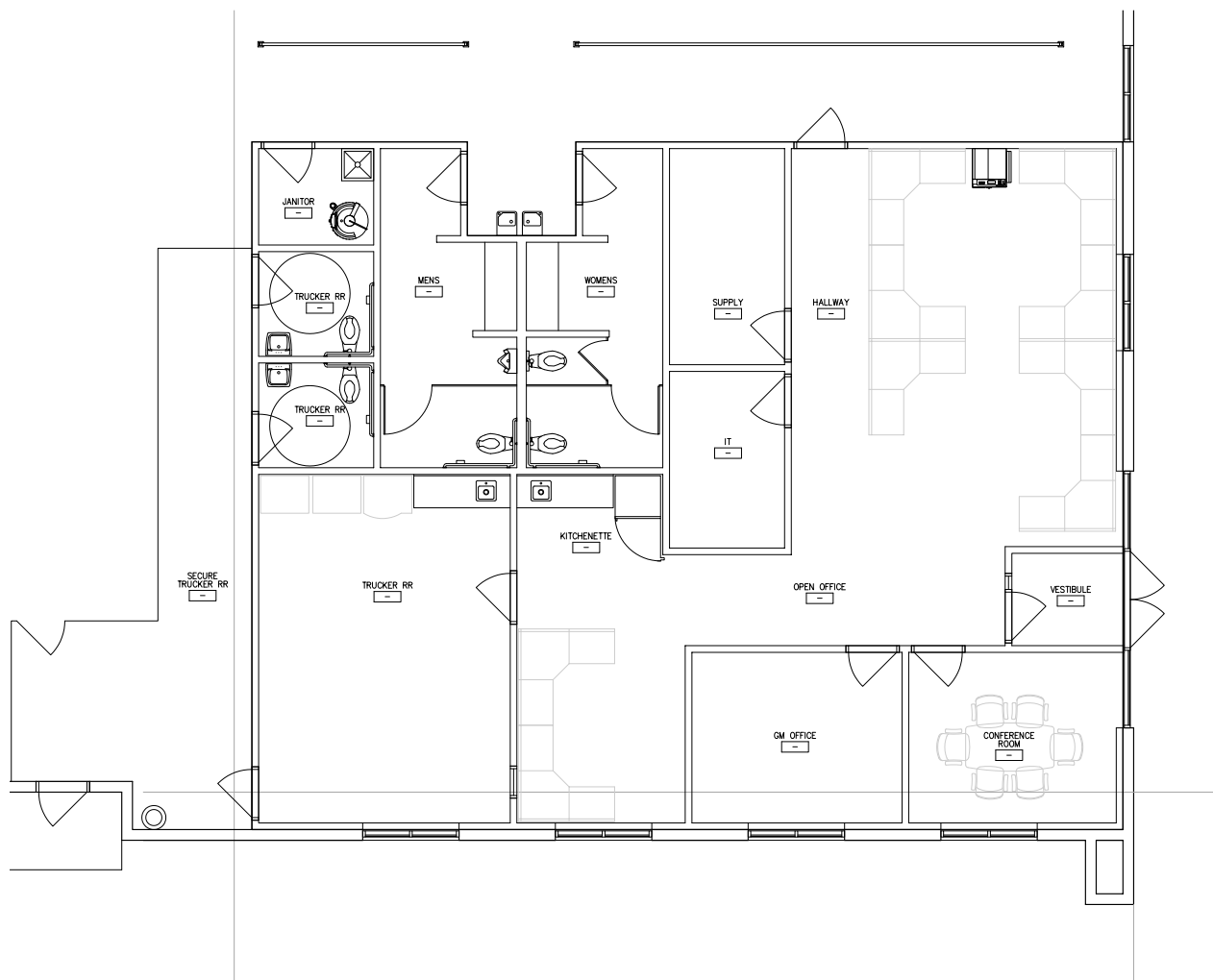
Available Space:	±508,775 Sq. Ft
Building Size:	±1,020,687 Sq. Ft
Office Size:	2,283 Sq. Ft Located in the SW Corner
Land:	73.45 Acres
Year Built:	2017
Zoning/Incentives:	Rickenbacker Business Development District / 15-Yr 100% Tax Abatement
Building Dimensions:	570' x 1,792'
Bay Size:	±31,920 Sq. Ft. (56' x 570')
Clear Height:	36'
Column Spacing:	55'W x 50'D with 60' speed bays
Docks	50 Docks (9' x 10')
Dock Equipment:	All Doors Outfitted with 40,000 lb Capacity levelers (6' x 8') Bumpers, Seals, Lights and Track Guards
Drive-ins:	2 - 12' x 14'
Truck Court:	130' Depth (60' Concrete Pad)
Construction:	Tilt-Up Concrete Panels
Roof:	45 mil Mechanically Fastened TPO Membrane Roof
Floor:	7" Unreinforced Concrete Slab (4,000 PSI); Staging Bay Reinforced with Wire Welded Mesh; FF 55, FL 33
Fire Suppression:	ESFR
Heating:	Direct Fired Gas Air Make-Up Units Mounted on Roof; 55° Inside at 0° Outside
Ventilation Fans:	Exhaust Fans and Intake Louvers Provide Ventilation to Code
Lighting:	LED, 30fc, occupancy sensors
Parking:	Est. 57 Auto Parking Spaces, Est. 115 Trailer Parking Spaces
Electrical Service:	One (1) 2000 Amp 277/480 Volt, 3 Phase Services; South Central Power
Rate:	Negotiable
Est. Opex:	Estimated at \$0.58/Sq. Ft

Site Plan



Office Layout

»» Optimal space for business operations



±2,283 SQ. FT OFFICE SPACE

3780 Tradeport Court
Lockbourne, OH 43137

For Lease

Conceptual Truck Parking



Prime Location in Rickenbacker



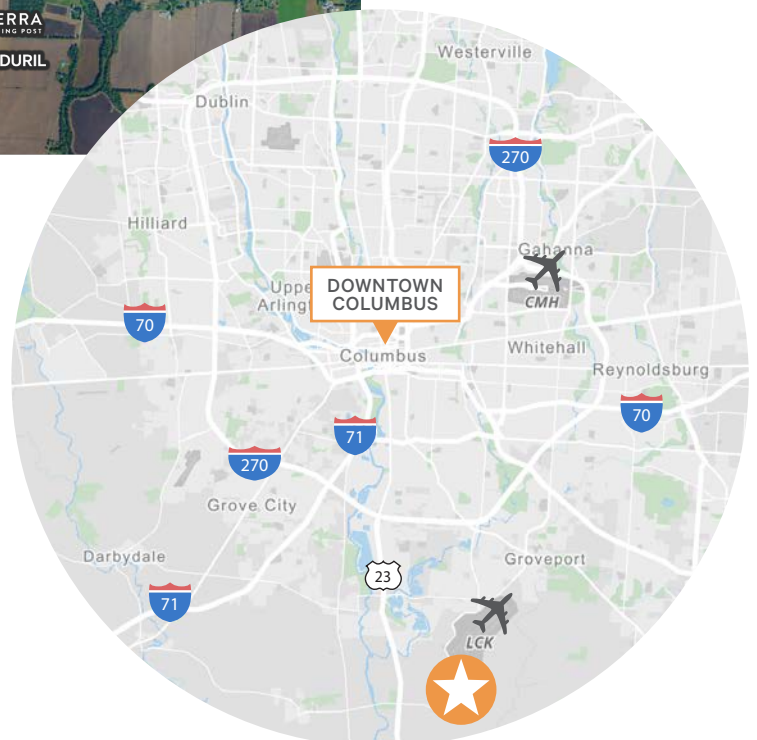
±2.5 Mi
to US-23

±19 Mi
to Downtown Columbus

±4.8 Mi
to Rickenbacker Int'l Airport

±23 Mi
to John Glenn Int'l Airport

- » Located in Rickenbacker, which has a **2.4% vacancy rate**
- » **±6.0 miles** to I-270, and close to I-71 and I-70
- » **Directly across** from the Norfolk Southern Rickenbacker Intermodal Yard
- » Within a **one-day truck drive (10 hours)** of 47% of the US population and 33% of the Canadian population
- » **Close proximity** to Distribution Hubs:
 - FedEx Smartpost - Grove City and Groveport
 - UPS Facilities - Obetz and Columbus West
 - FedEx Ground Hub - Grove City
 - FedEx Air Hub - Rickenbacker



Labor in Rickenbacker

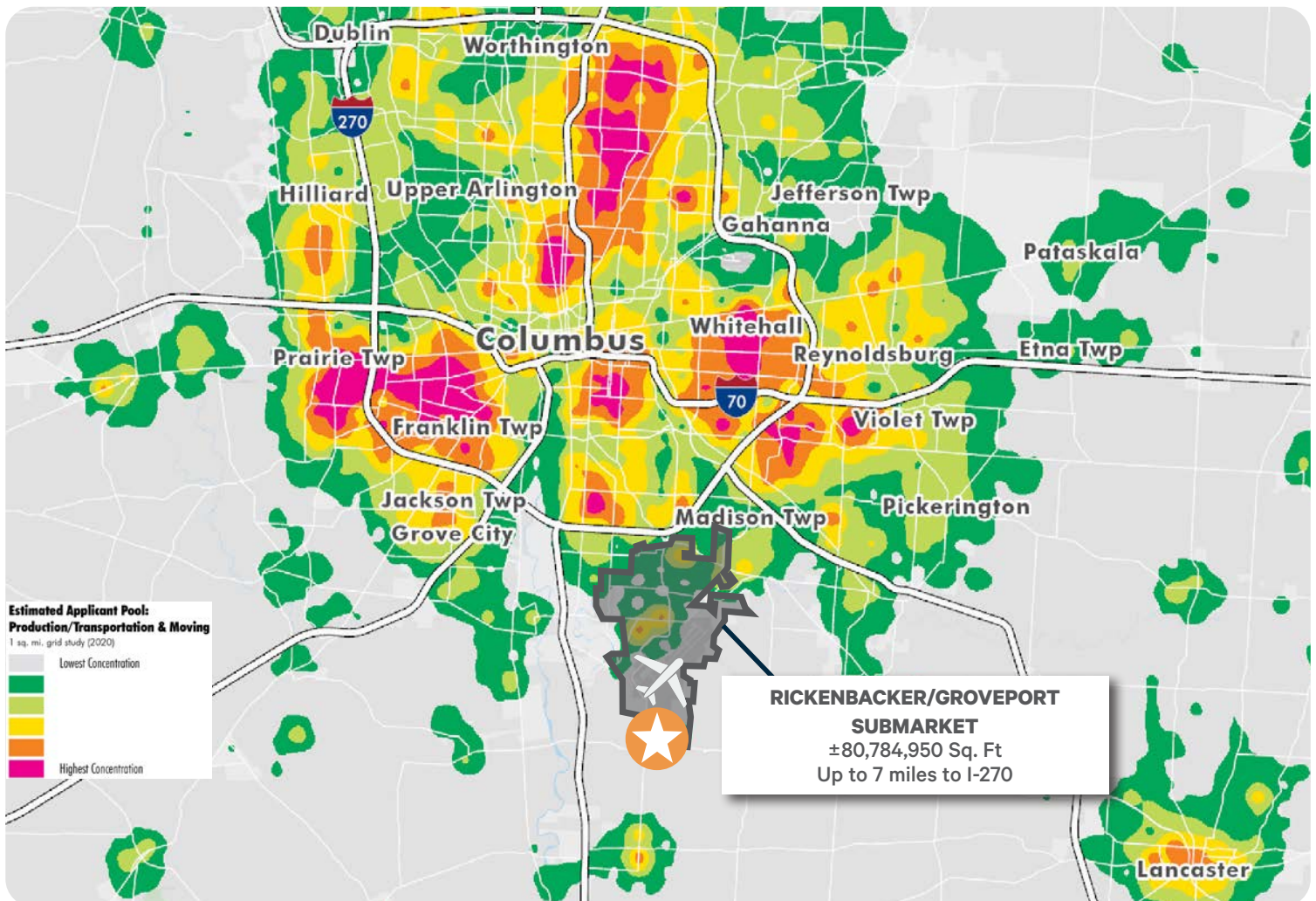
- » State incentives and tax programs available
- » Lower labor costs than the national average
- » More than 70,000 skilled and motivated workers in logistics-related occupations in Central Ohio
- » 62 colleges and universities nearby with 140,000 students provide excellent seasonal labor pool
- » Fisher College of Business at The Ohio State University ranks #5 in the nation among supply chain/logistics programs

4.00%
Unemployment Rate
(12/24)

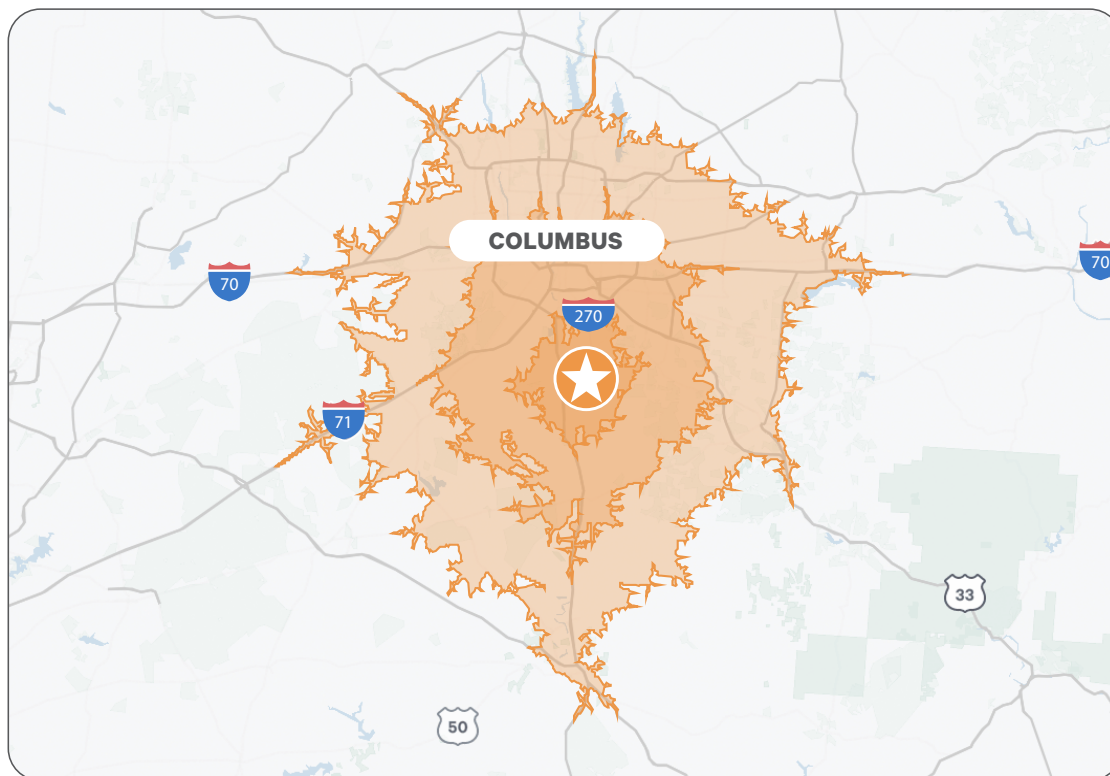
±16.48%
Employment Growth
Since 2011

51.97%
Labor Participation
Rate

\$20.32
Average Production
Wages (Per Hr)



Drive Times



WITHIN 15 MINUTES DRIVING TIME:

2022 Population (Current Year Est.)	96,159	Transportation and Material Moving	6,137
2022-2027 Annual Population Growth Rate	0.50%	Production	3,210
2022 Civilian Population 16+ in Labor Force	48,554	Installation, Maintenance and Repair	1,909

WITHIN 30 MINUTES DRIVING TIME:

2022 Population (Current Year Est.)	1,296,112	Transportation and Material Moving	60,754
2022-2027 Annual Population Growth Rate	0.42%	Production	31,943
2022 Civilian Population 16+ in Labor Force	685,757	Installation, Maintenance and Repair	15,870

WITHIN 45 MINUTES DRIVING TIME:

2022 Population (Current Year Est.)	1,926,602	Transportation and Material Moving	79,060
2022-2027 Annual Population Growth Rate	0.48%	Production	45,462
2022 Civilian Population 16+ in Labor Force	1,013,290	Installation, Maintenance and Repair	23,047

±508,775 Sq. Ft Available



Contact Us



Weston Devore
First Vice President
+1 614 430 5031
weston.devore@cbre.com



Rick Trott
Executive Vice President
+1 614 430 5091
richard.trott@cbre.com

© 2025 CBRE, Inc. All rights reserved. This information has been obtained from sources believed reliable, but has not been verified for accuracy or completeness. You should conduct a careful, independent investigation of the property and verify all information. Any reliance on this information is solely at your own risk. CBRE and the CBRE logo are service marks of CBRE, Inc. All other marks displayed on this document are the property of their respective owners, and the use of such logos does not imply any affiliation with or endorsement of CBRE. Photos herein are the property of their respective owners. Use of these images without the express written consent of the owner is prohibited.