



## For Lease | 1,500 SF Industrial Space

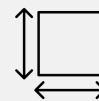
877 NE 27th Ln., Cape Coral, FL 33909

### Property Highlights:

- 1,500 +/- SF warehouse available with air-conditioned office, private restroom, 18' ceiling height, 3-phase power, and 12'x14' grade level door.
- The property is equipped with security cameras and professionally managed.
- Conveniently located in northeast Cape Coral – close to US 41 and I-75 for quick access to major routes.
- Ideal for contractors, service companies, storage, or light industrial use.



**Asking Rate:**  
Contact Broker for Pricing



**Square Footage:**  
1,500 SF



**Clear Height / Door:**  
18' Clear / 12' x 14'



**Parking Ratio:**  
2.00/1,000



**Zoning:**  
I-L



**Scan to  
Schedule  
a Tour**

**FOR MORE INFORMATION  
PLEASE CONTACT:**

**Dale Hersowitz**  
305.690.0046  
leasing@razillience.com

**Shalini Hersowitz**  
954.254.0824  
shersowitz@collektion.com

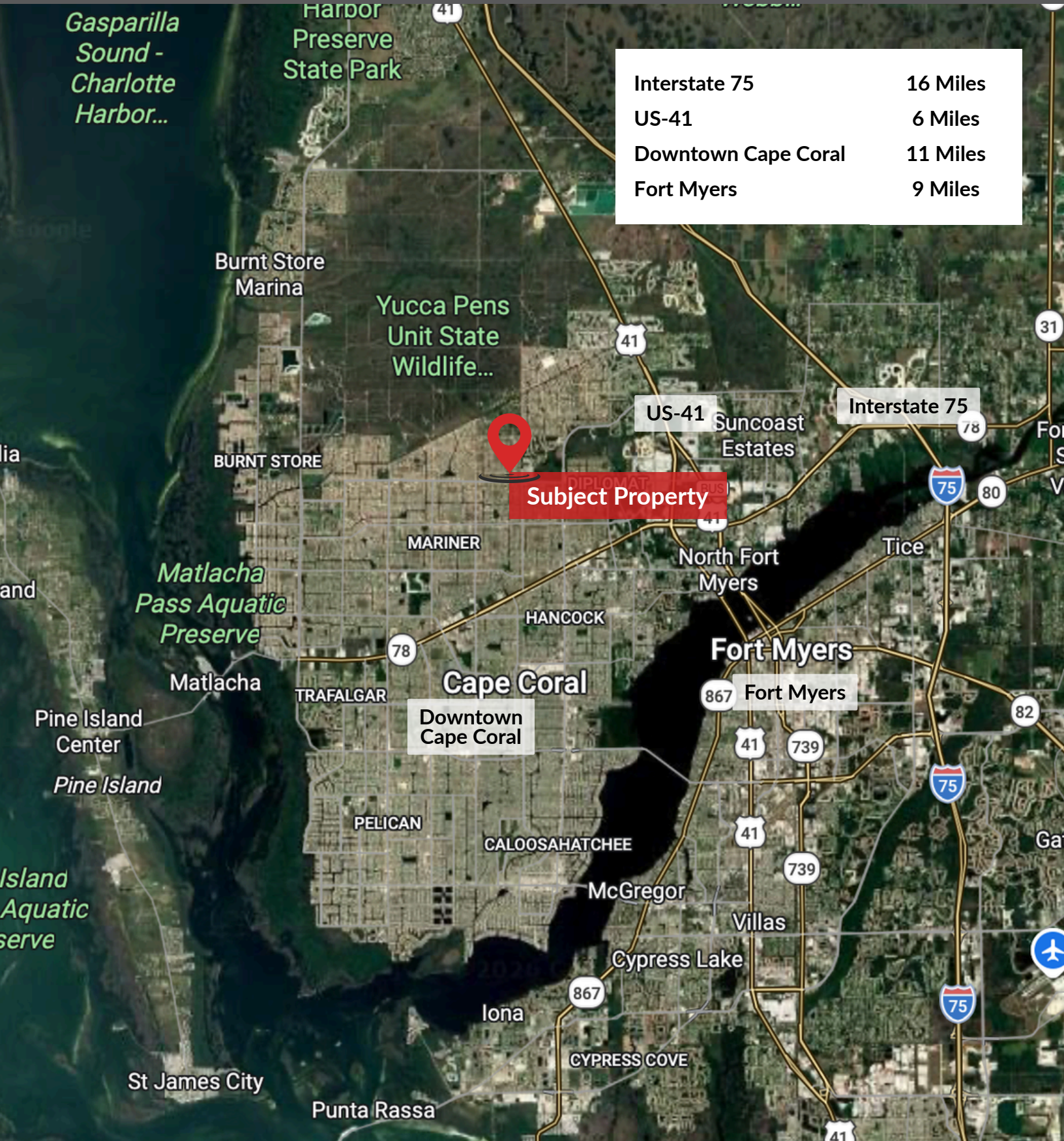
**COLLEKTION  
PROPERTIES**

The information contained herein has been obtained from sources deemed reliable, however, Collektion Properties makes no guarantees, warranties or representation as to its completeness or accuracy thereof. The presentation of this property is submitted subject to errors, omissions, change of price or conditions, prior to sale or lease or withdrawal without notice.

# For Lease | 1,500 SF Industrial Space

877 NE 27th Ln., Cape Coral, FL 33909

Interstate 75	16 Miles
US-41	6 Miles
Downtown Cape Coral	11 Miles
Fort Myers	9 Miles



FOR MORE INFORMATION  
PLEASE CONTACT:

Dale Hersowitz  
305.690.0046  
leasing@razillience.com

Shalini Hersowitz  
954.254.0824  
shersowitz@collektion.com



The information contained herein has been obtained from sources deemed reliable, however, Collektion Properties makes no guarantees, warranties or representation as to its completeness or accuracy thereof. The presentation of this property is submitted subject to errors, omissions, change of price or conditions, prior to sale or lease or withdrawal without notice.