

Most Affordable Space in Maple Lawn

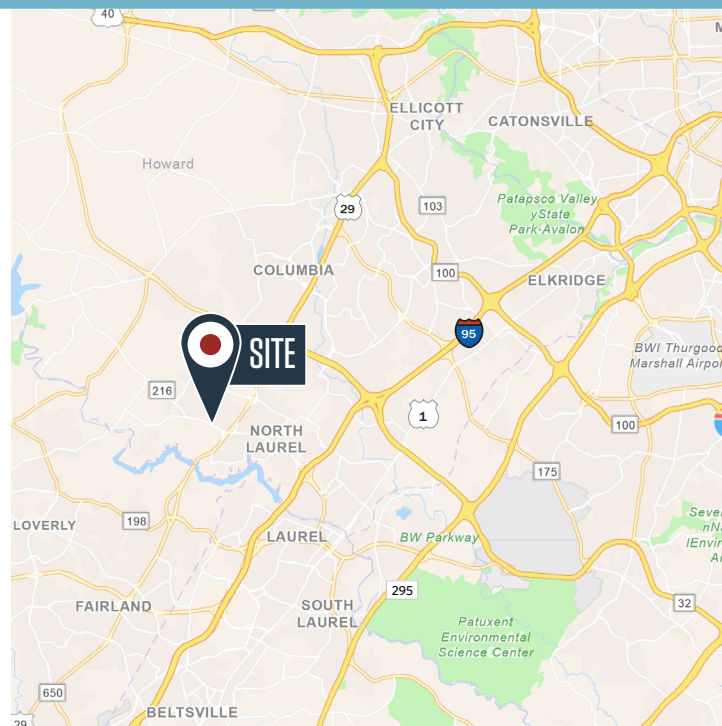


FOR LEASE

Building Highlights

- **Building Size:** 10,000 square feet
- **Available:** 2,432 SF, Full Service; Recently renovated
- **Lot Size:** .69 acres
- **Year Built:** 2014
- **Parking Spaces:** 34 surface spaces
- **Stories:** 2
- **Zoning:** MXD3
- **Closeby Access:** Routes 216, 29, 32 & I-95
- **Conf. Rooms:** Shared conference rooms available
- **Management:** On-site management

Nearby Amenities



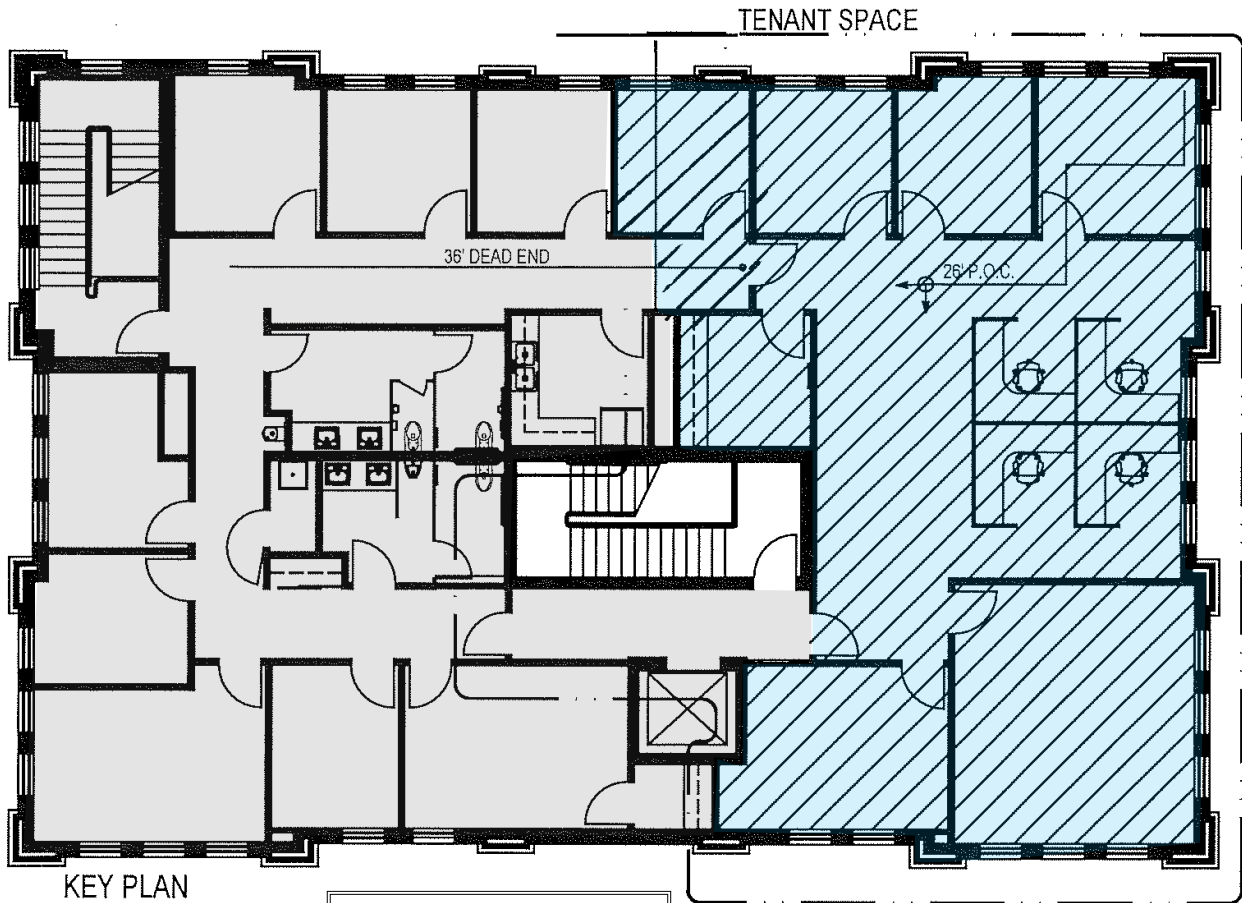
Abby Glassberg
aglassberg@klnb.com
443-574-1433

9881 Broken Land Pkwy, #300
Columbia, MD 21046
klnb.com

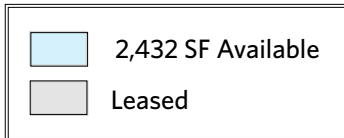
11825 WEST MARKET PL.

Fulton, MD 20759 | Howard County

FLOOR PLAN



KEY PLAN
SCALE: 1/84" = 1'-0"



DEMOGRAPHICS | 3 MILE



POPULATION
33,659



HOUSEHOLDS
11,511



MEDIAN
HH INCOME
\$176,597



MEDIAN
AGE
43.2



DISPOSABLE
INCOME
\$124,225

AERIAL VIEW



INTERIOR PHOTOS



11825 WEST MARKET PL.

Fulton, MD 20759 | Howard County



MARKET AERIAL



While we have no reason to doubt the accuracy of any of the information supplied, we cannot, and do not, guarantee its accuracy. All information should be independently verified prior to a purchase or lease of the property. We are not responsible for errors, omissions, misuse, or misinterpretation of information contained herein and make no warranty of any kind, express or implied, with respect to the property or any other matters.

Abby Glassberg
aglassberg@klnb.com
443-574-1433

9881 Broken Land Pkwy, #300
Columbia, MD 21046
klnb.com