



### Property Information

<b>Location:</b>	1523 Colony Circle Longview, Texas 75604 Located in Colony Point Office Park off of Gilmer Road
<b>Lot Size:</b>	0.33 Acre
<b>Asking Price:</b>	\$525,000.00
<b>Zoning:</b>	Planned Development Commercial
<b>Amenities:</b>	Nicely maintained office building with 5 offices, reception, conference room, work room with expansive storage and covered parking in the rear of the building.

*For more information:*

**Walter R. Northcutt**  
**(903) 753-2191**

[wnorthcutt@beerwellseasttexas.com](mailto:wnorthcutt@beerwellseasttexas.com)

## PROPERTY PHOTOS





This information has been secured from sources we believe to be reliable, but we make no representations or warranties, expressed or implied, as to the accuracy of the information. References to square footage or property boundary lines are approximate. Buyer must verify the information and bears all risk for any inaccuracies.

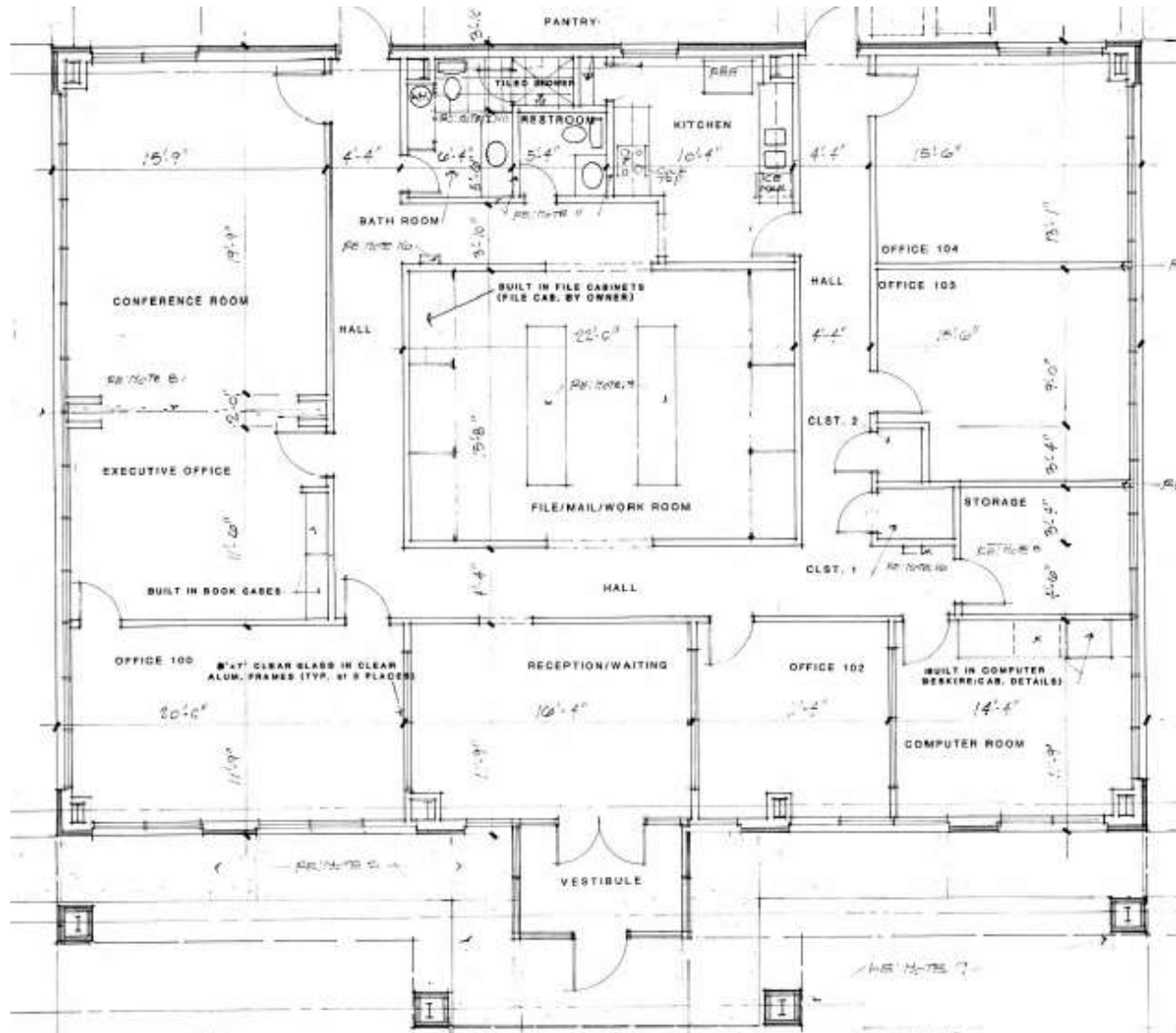




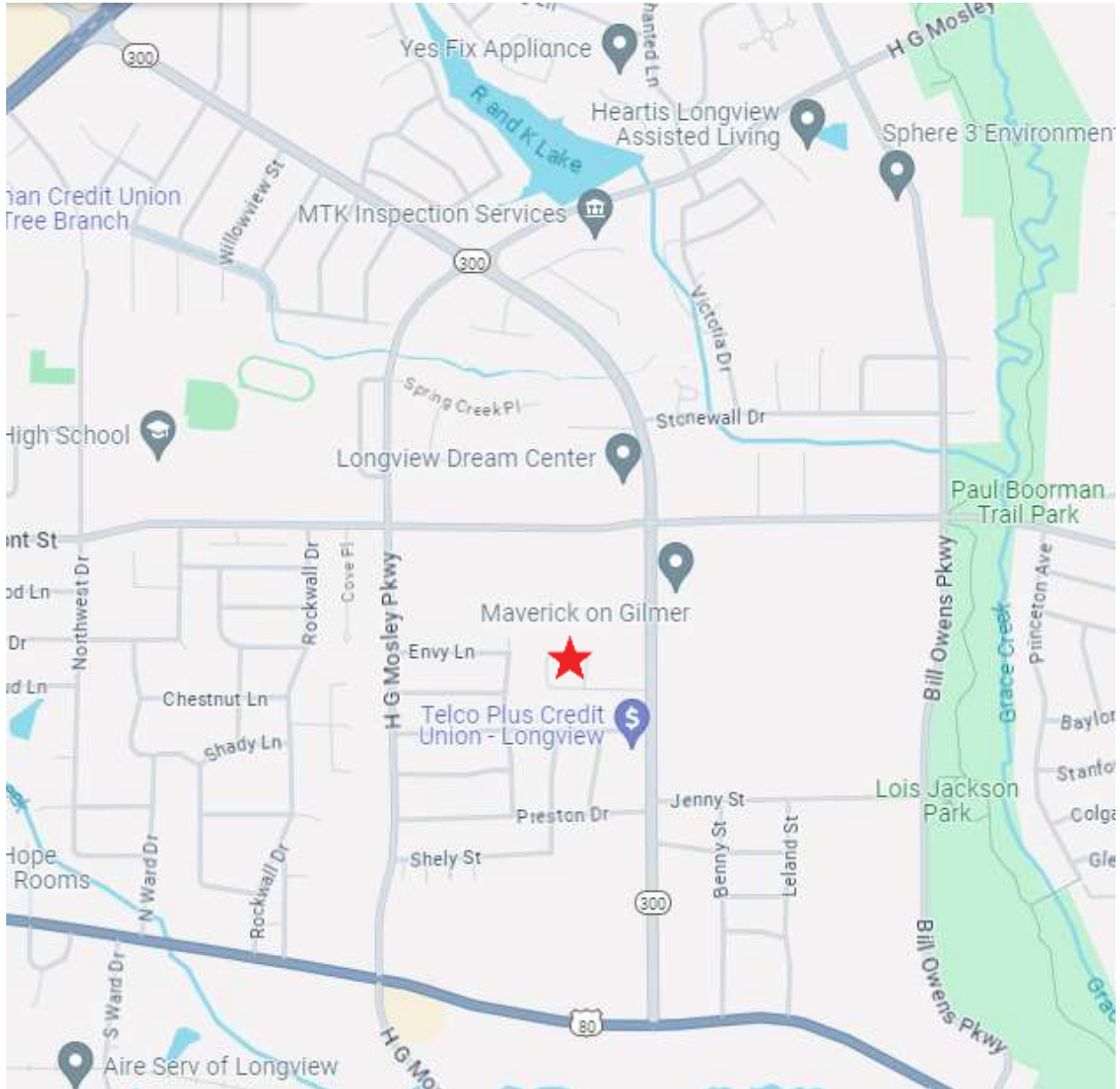


# FLOOR PLAN

(Actual Layout May Vary)



# MAP



This information has been secured from sources we believe to be reliable, but we make no representations or warranties, expressed or implied, as to the accuracy of the information. References to square footage or property boundary lines are approximate. Buyer must verify the information and bears all risk for any inaccuracies.



# AERIAL

