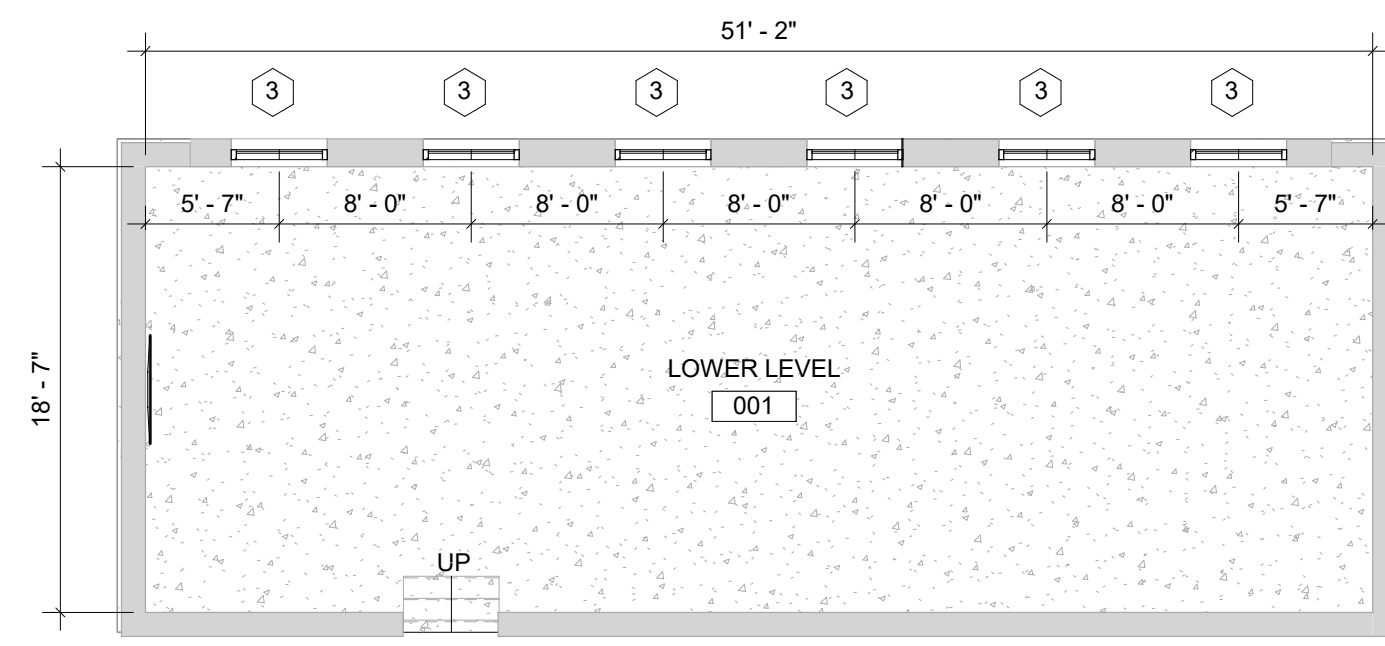


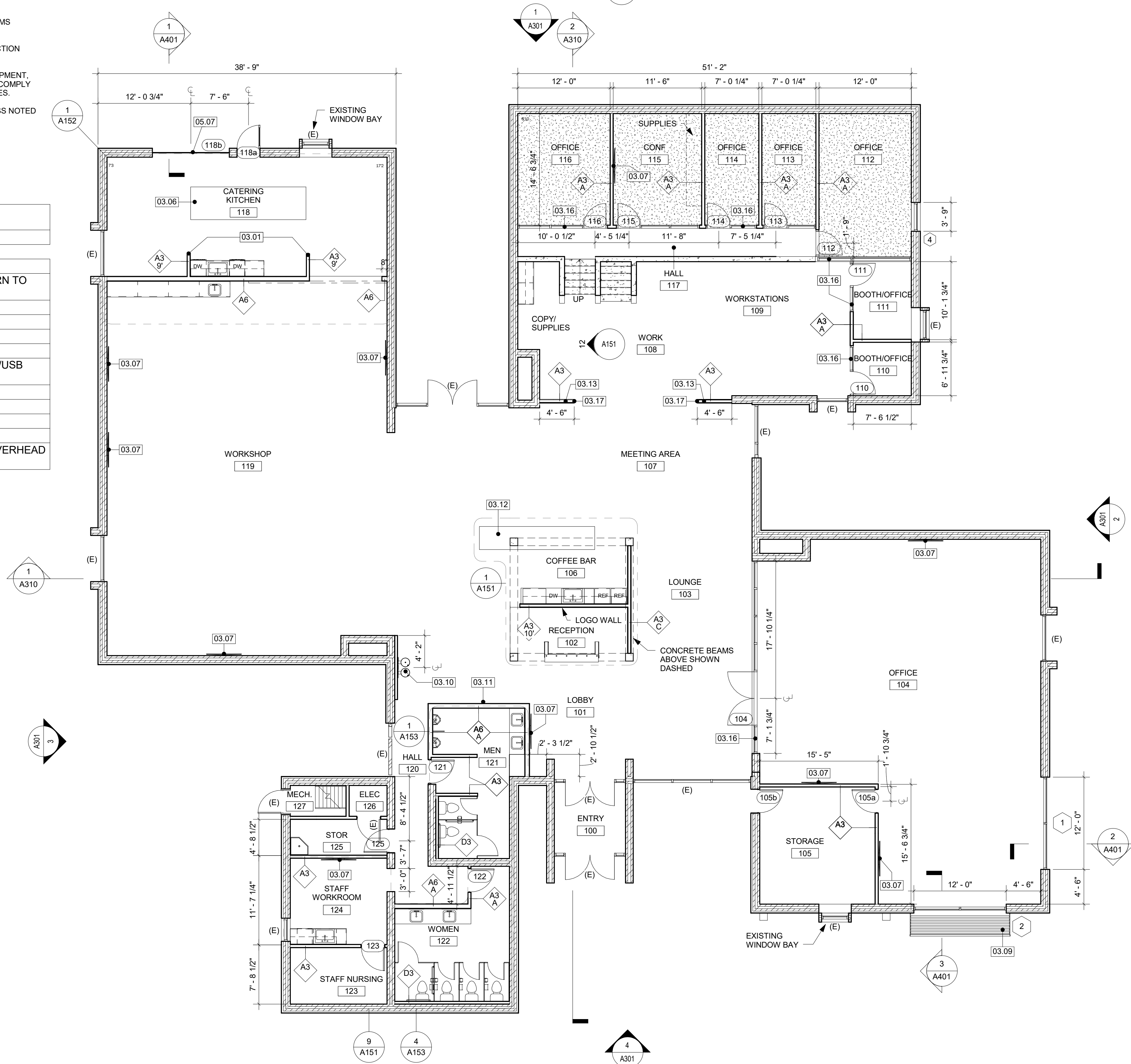
GENERAL FLOOR PLAN NOTES

1. ALL DIMENSIONS ARE FROM GRID LINE, EXTERIOR FACE OF STUD OR EXTERIOR FACE OF CONCRETE FOUNDATION UNLESS OTHERWISE NOTED.
2. FLOORS SHALL BE LEVELED WITHIN MANUFACTURERS SPECIFIED TOLERANCES FOR EACH FLOORING FINISH.
3. EACH TRADE INSTALLER SHALL EXAMINE THE SUBSTRATE CONDITION AND/OR SITE CONDITIONS WHICH AFFECT THE QUALITY OF EACH PRODUCT TO BE INSTALLED. IF ANY CONDITIONS EXIST WHICH HAVE A DETRIMENTAL EFFECT ON THE QUALITY OF THE INSTALLATION, THE INSTALLER SHALL IMMEDIATELY ADVISE THE CONTRACTOR. INSTALLATION SHALL NOT PROCEED UNTIL THE UNSATISFACTORY CONDITIONS ARE CORRECTED. INSTALLATION OF PRODUCTS SHALL SIGNIFY ACCEPTANCE BY THE INSTALLER OF THE SUBSTRATE CONDITIONS.
4. EACH TRADE INSTALLER SHALL REFER TO AND FOLLOW THE MANUFACTURERS INSTALLATION INSTRUCTIONS FOR THE PRODUCTS BEING INSTALLED AS WELL AS THE INSTALLATION INSTRUCTIONS OF RELATED PRODUCTS BEING USED IN CONJUNCTION.
5. EACH TRADE CONTRACTOR SHALL TAKE PRECAUTIONS TO MAINTAIN AND PROTECT NEW WORK AS WELL AS EXISTING SYSTEMS AND ELEMENTS THAT ARE TO REMAIN. ANY DAMAGE TO SUCH SYSTEMS AND ELEMENTS SHALL BE IMMEDIATELY REPAIRED TO AN ACCEPTABLE LEVEL OF THE OWNER AND ARCHITECT. IF SATISFACTORY REPAIRS CANNOT BE MADE, THE TRADE CONTRACTOR SHALL REPLACE SYSTEMS AND ELEMENTS WITH "NEW" PRODUCTS ACCEPTABLE.
6. COORDINATE AND PROVIDE BACKING FOR CASEWORK, GRAB BARS, AND ITEMS ATTACHED TO WALLS AND CEILINGS.
7. CONTRACTORS SHALL PATCH AND REPAIR EXISTING FIRE RATED CONSTRUCTION SUCH THAT AREAS ARE CODE COMPLIANT.
8. MOUNTING HEIGHTS INCLUDING BUT NOT LIMITED TO THE FOLLOWING: EQUIPMENT, ACCESSORIES, CONTROL DEVICES, DOOR HARDWARE, SIGNAGE, ETC., SHALL COMPLY WITH ANSI 117, LATEST ICC ACCESSIBLE AND USABLE BUILDINGS AND FACILITIES.
9. ALL SINKS AND COUNTERTOPS IN SCOPE SHALL BE ADA ACCESSIBLE UNLESS NOTED OTHERWISE.



2 LOWER LEVEL - FLOOR PLAN
1/8" = 1'-0"

Keynote Legend	
Key Value	Keynote Text
03.01	ALIGN
03.06	CAESARSTONE ISLAND COUNTER TOP WITH RETURN TO FLOOR EACH SIDE
03.07	TV MONITOR
03.09	SUN SHADE
03.10	DRINKING FOUNTAIN W/ BOTTLE FILLER
03.11	INFORMATION BOARD
03.12	CUSTOM BUILT BAR HEIGHT TABLE W/ ELECTRICAL/USB PORTS
03.13	SLATTED RECLAIMED BARN WOOD PANELS
03.15	LOCKER UNITS
03.16	STOREFRONT
03.17	RAW STEEL SHEET END CAPS
05.07	NEW OVERHEAD GLASS PANEL GARAGE DOOR - OVERHEAD DOOR CO - MODEL 511 - CLEAR ANODIZED ALUM



1 LEVEL 1 - FLOOR PLAN
1/8" = 1'-0"

INTERIOR PARTITION SYSTEMS

General Interior Partition Notes

1. PARTITION TO EXTEND TO STRUCTURE ABOVE OR EQUIVALENT UNLESS NOTED OTHERWISE.
2. PROVIDE FIRE RATED GYPSUM BOARD IN LIEU OF STANDARD GYPSUM BOARD AT FIRE RATED CONDITIONS.
3. PROVIDE MOISTURE RESISTANT (OR TILE BACKER BOARD AT WALL TILE LOCATIONS) IN LIEU OF STANDARD GYPSUM BOARD AT RESTROOMS AND/OR CUSTODIAL AREAS.

Symbol Legend

- A3** PARTITION TYPE
- 1** MODIFIER
- NA** NOT AVAILABLE
- UL#** UNDERWRITERS LABORATORY (UL) FIRE RESISTANCE DESIGN NUMBER

Modifier Legend

- A** ACOUSTICALLY RATED PARTITION - PROVIDE SOUND ATTENUATION INSULATION
- B** NON RATED, EXTEND 6" ABOVE SUSPENDED CEILING, BRACE TO STRUCTURE ABOVE
- C** NON RATED, EXTEND TO BOTTOM OF SUSPENDED CEILING ABOVE
- T** THERMALLY RATED PARTITION - PROVIDE NON FACED R-XX THERMAL INSULATION
- 1** 1 HOUR FIRE RATED PARTITION - SEE PARTITION TYPE FOR UL FIRE RESISTANCE DESIGN NUMBER
- 2** 2 HOUR FIRE RATED PARTITION - SEE PARTITION TYPE FOR UL FIRE RESISTANCE DESIGN NUMBER
- 3** 3 HOUR FIRE RATED PARTITION - SEE PARTITION TYPE FOR UL FIRE RESISTANCE DESIGN NUMBER
- 4** 4 HOUR FIRE RATED PARTITION - SEE PARTITION TYPE FOR UL FIRE RESISTANCE DESIGN NUMBER
- X-3'** PARTIAL HEIGHT PARTITION - SEE FLOOR PLAN FOR PARTITION HEIGHT

Interior Partition Types

A 1 LAYER GWB EACH SIDE

PARTITION TYPE	STUD WIDTH	ASSEMBLY WIDTH	FIRE RESISTANCE
A3	3 5/8"	4 7/8"	1 UL# U465
A4	4"	5 1/4"	2 NA
A6	6"	7 1/4"	4 NA

D 1 LAYER GWB ONE SIDE

PARTITION TYPE	STUD WIDTH	ASSEMBLY WIDTH	FIRE RESISTANCE
D1	1 5/8"	2 1/4"	1 NA
D2	2 1/2"	3 1/8"	2 NA
D3	3 5/8"	4 1/4"	4 NA
D4	4"	4 5/8"	
D6	6"	6 5/8"	

M CONCRETE MASONRY UNIT

PARTITION TYPE	ACTUAL WIDTH	NOMINAL WIDTH	FIRE RESISTANCE
M4	3 5/8"	4"	1 NA
M6	5 5/8"	6"	2 UL# U906
M8	7 5/8"	8"	3 UL# U904
M10	9 5/8"	10"	4 UL# U901
M12	11 5/8"	12"	
M14	13 5/8"	14"	
M16	15 5/8"	16"	

REMARKS: MAXIMUM ONE HOUR RATING AVAILABLE AT M4. MAXIMUM TWO HOUR RATING AVAILABLE AT M6.



DESIGN PRACTICE INC
3325 Mariposa St
Denver CO 80211
www.designpracticedenver.com
info@designpracticedenver.com
PHONE 303 561 3000

SHARE FAIR NATION
455 S PIERCE ST - LAKEWOOD, CO 80226

No.	Desc.	Date

Drawn By: MD
Checked By: MD

100%
CONSTRUCTION
DOCUMENTS
ISSUE DATE
06-21-16

FLOOR PLAN

A101