

AXIS 360

COMMERCIAL REAL ESTATE

3001½ Gill St.
Suite A
Bloomington, Illinois

www.axis360.co



Central Illinois Warehouse

ADDRESS

6070 Revere Road
Clinton, Illinois 61727

SIZE

10,684

ASKING

~~\$349,000~~ ~~\$249,000~~ **\$210,000**

TAX ID

07-35-400-004

ZONING

I-2 (DeWitt County)

YEAR BUILT

1968

LOT SIZE

.85 acres (37,025 sq. ft.)

A 10,684 sq. ft. warehouse located in central Illinois close to major highways, located at the corner of Route 10 and Revere Road in Clinton, Illinois. A rare find, priced to sell with a dock and overhead door. It has office space with 800 amp service and a building sprinkler system that is currently drained. The offices have heat and A/C, the warehouse space has hanging forced air units for heat. Property sits on 0.85 acres with city utilities.



Mike Talkington
Commercial Broker
mtalkington@axis360.co
(309) 530-4913

Visit our Website:
www.axis360.co

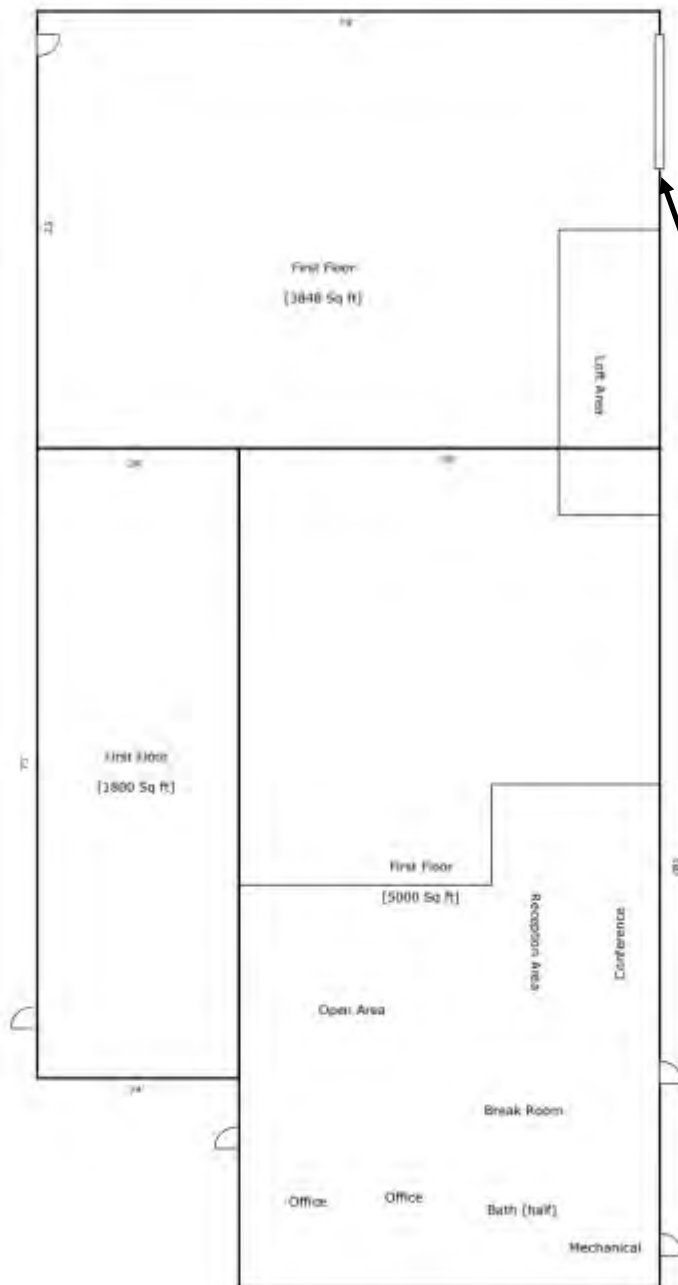




3001½ Gill St.
Suite A
Bloomington, Illinois

www.axis360.co

Visit our Website:



Mike Talkington, Commercial Broker

mtalkington@axis360.co

(309) 530-4913



3001½ Gill St.
Suite A
Bloomington, Illinois
www.axis360.co

Visit our Website:



Mike Talkington, Commercial Broker

mtalkington@axis360.co

(309) 530-4913



3001½ Gill St.
Suite A
Bloomington, Illinois
www.axis360.co

Visit our Website:



Mike Talkington, Commercial Broker

mtalkington@axis360.co

(309) 530-4913