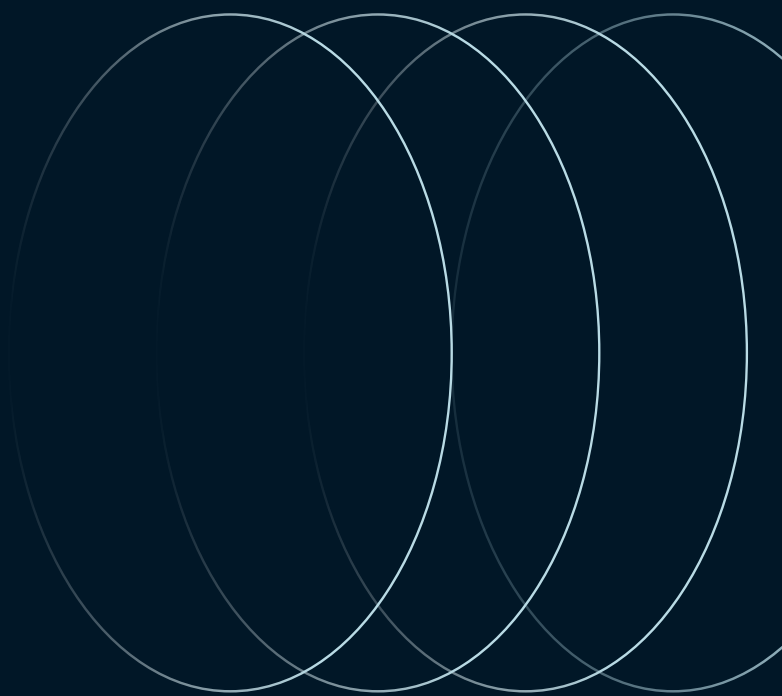


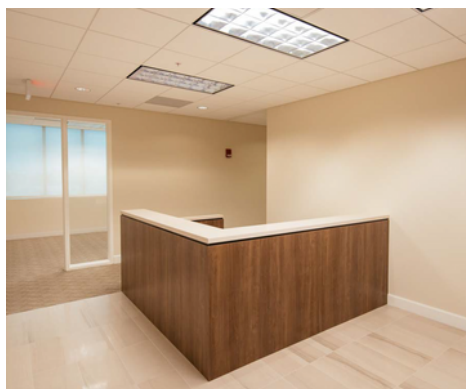


For lease

Courthouse Commons
444 West Railroad Ave
West Palm Beach, Florida



Availability



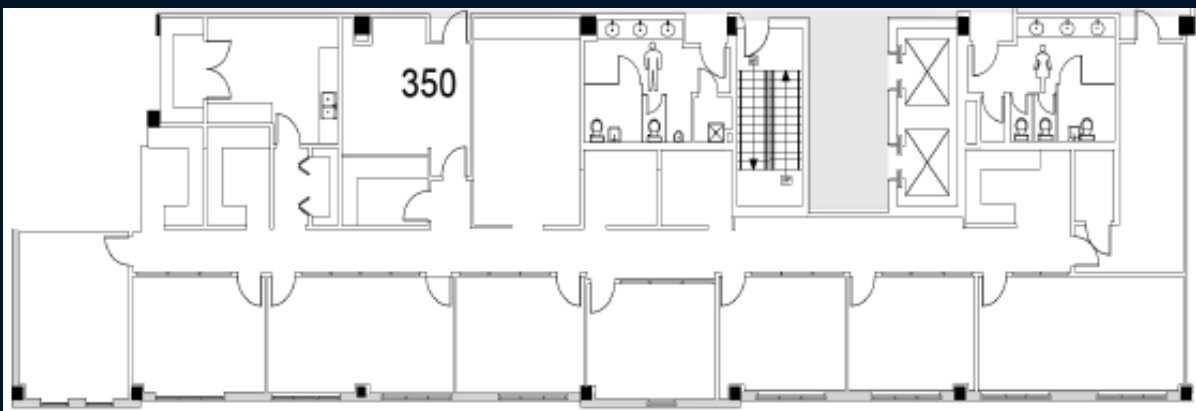
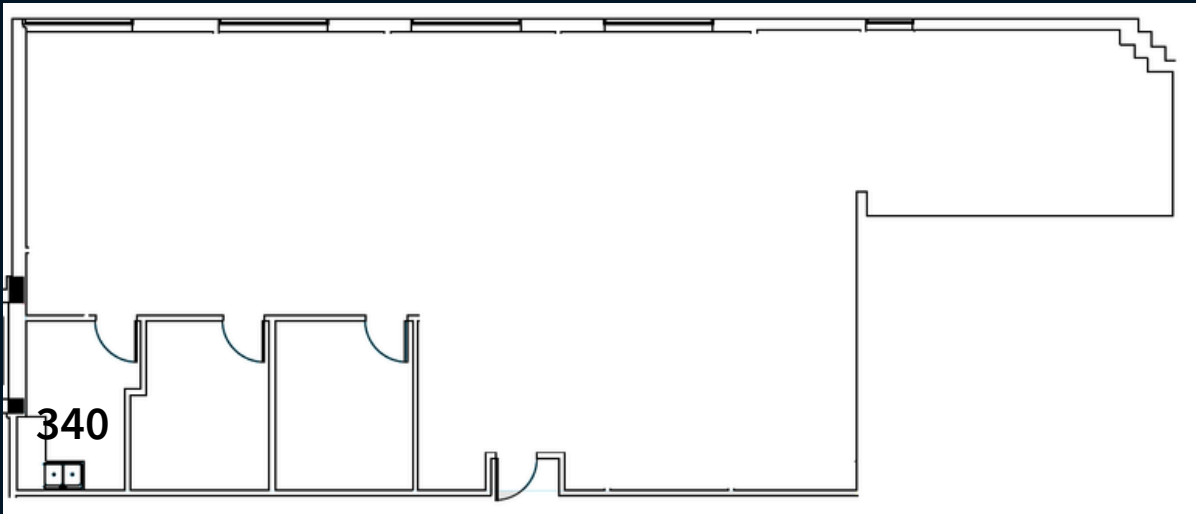
Suite	RSF	Availability
340	2,750 SF	Available
350	4,983 SF	Available
Asking Rate (PSF): \$36.00 NNN OPEX: \$18.50 PSF		

Property Highlights

- Close proximity to Bright-Line station, numerous restaurants, and City Hall
- Convenient garage parking
- Responsive and motivated institutional ownership
- On-site Restaurant
- Parking Ratio & Rate: 5.00/1,000 SF - approximately \$80/month unreserved
- Complimentary gym



Floorplans



Kevin Probel
Senior Managing Director
kevin.probel@jll.com
1+ 561 676 2131

Kevin McCarthy
Senior Managing Director
kevin.mccarthy@jll.com
1+ 561 292 2662

jll.com

Jones Lang LaSalle Americas, Inc. License #: CO508577000