

# FOR LEASE

Highway 101 & Del Guzzi Drive  
Port Angeles, WA 98362



## OLYMPIC PLAZA

Jamie Firth | Justin Holmes

First Western Properties—Tacoma Inc. | 253.472.0404  
6402 Tacoma Mall Blvd, Tacoma, WA 98409 | fwp-inc.com

# HIGHWAY 101 & DEL GUZZI DR:

LAST SPACE REMAINING!

**SUITE 2    1,487 ± SF    \$15.00 PSF    PLUS NNN**

- Site has great visibility
- Location has great access from Highway 101
- Site is located just 13 miles from Sequim
- Located just minutes from downtown Port Angeles
- Located on a lighted intersection
- Excellent retail/office opportunities
- Large pylon sign available on Highway 101
- Only 2 miles from the Port Angeles ferry landing



Regis - 2023

Population

Average HH Income

Daytime Population

Mile 1

3,779

\$65,624

4,422

Mile 3

19,065

\$73,854

17,988

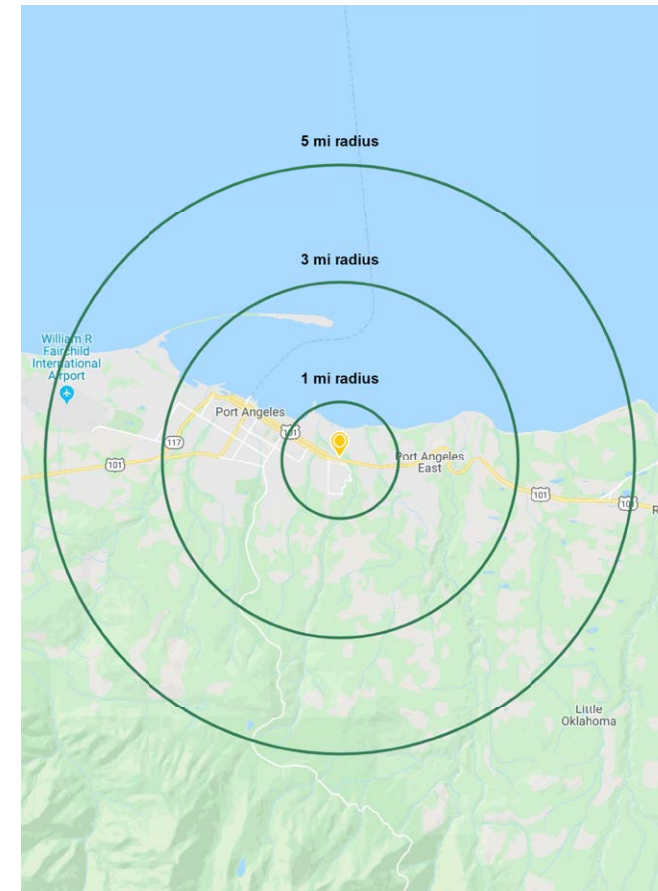
Mile 5

29,864

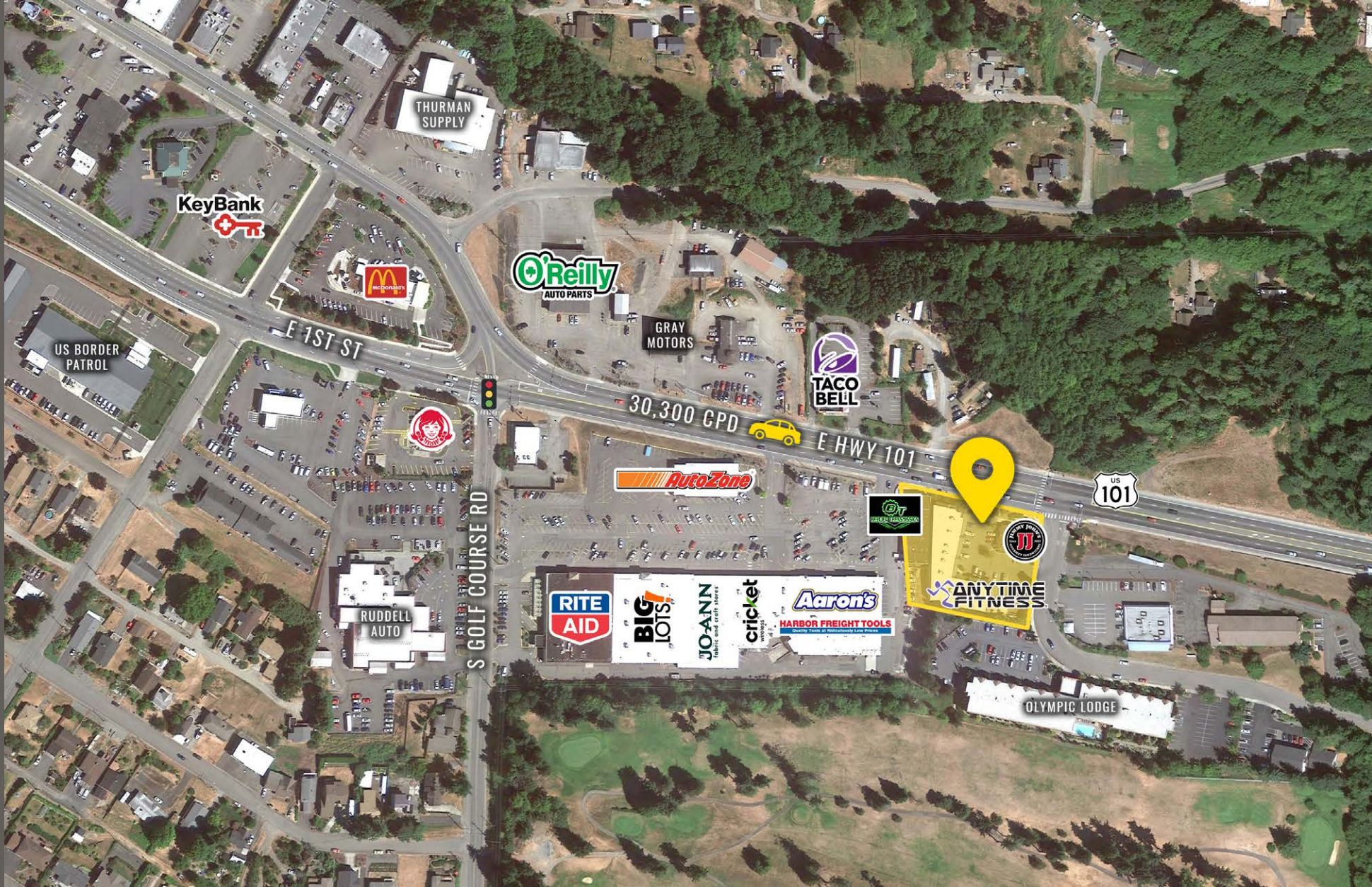
\$72,017

23,990

## NEARBY TENANTS



LOCATION DETAILS



Located directly along  
HWY 101

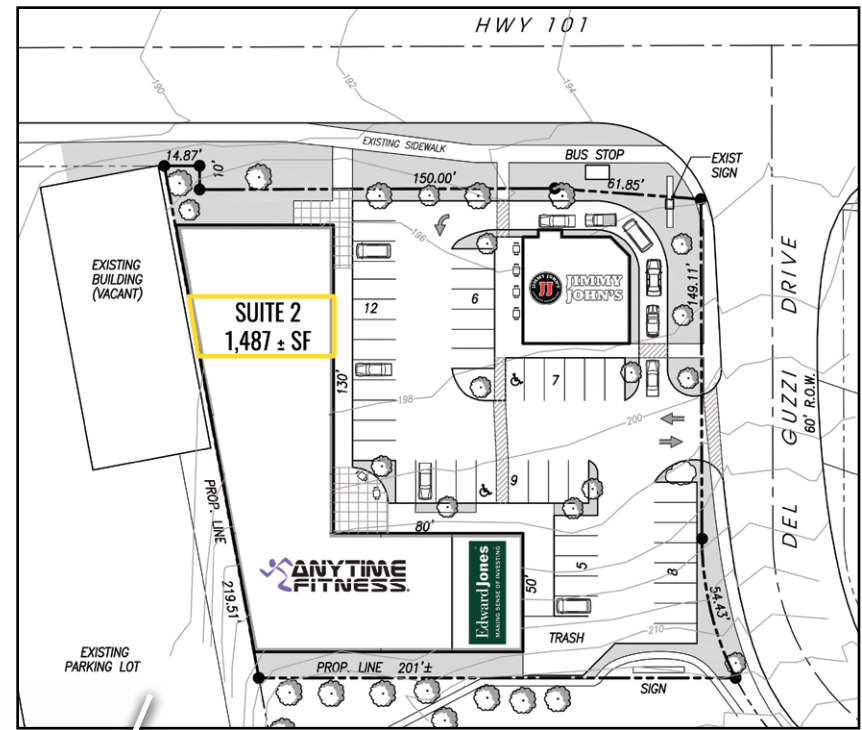


Located moments from  
downtown Port Angeles



30,300 CPD  
HWY 101

SITE PLAN



TACOMA | KIRKLAND | PORTLAND | SEATTLE



**RELATIONSHIP FOCUSED. RESULTS DRIVEN.**

**JAMIE FIRTH**

253.284.3649  
jamie@firstwesternproperties.com

**JUSTIN HOLMES**

253.447.2282  
justin@firstwesternproperties.com



First Western Properties—Tacoma Inc. | 253.472.0404  
6402 Tacoma Mall Blvd, Tacoma, WA 98409 | fwp-inc.com

© First Western Properties, Inc. DISCLAIMER: The above information has been secured from sources believed to be reliable, however, no representations are made to its accuracy. Prospective tenants or buyers should consult their professional advisors and conduct their own independent investigation. Properties are subject to change in price and/or availability without notice.