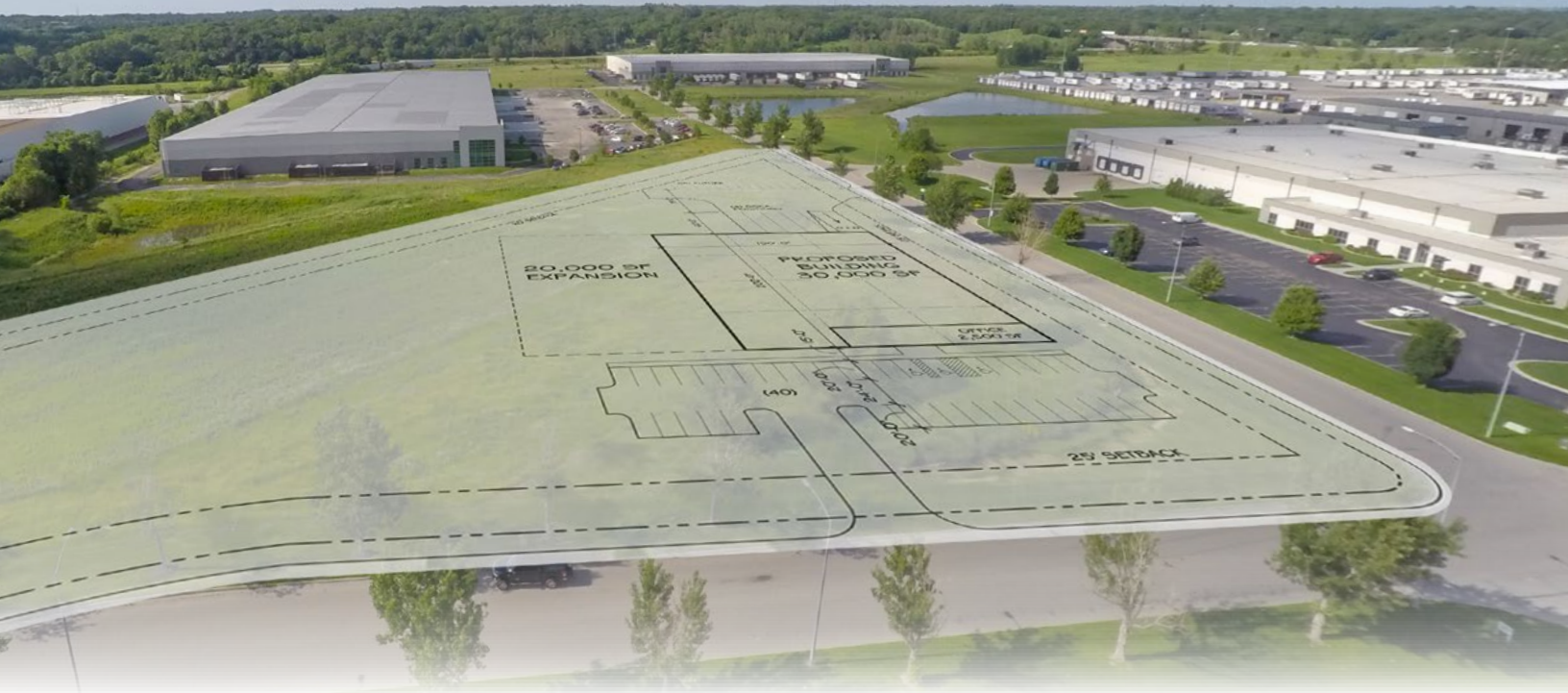


Midpoint Corporate Centre

2620 Midpoint Drive | Edwardsville, Kansas



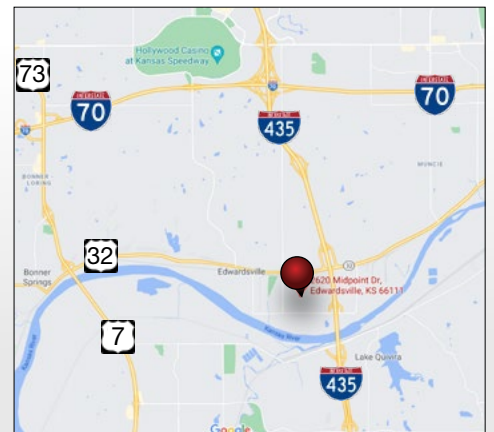
6.1-Acre Industrial Land Site For Sale

Midpoint Corporate Centre is a master-planned business park in Edwardsville, Kansas. Located immediately west of I-435, Midpoint contains a mix of national and regional companies including Office Max, MWI Veterinary, Herff Jones and Okonite.

Midpoint offers the ability to have 50% property tax abatement on qualifying projects, along with in-place roads and park covenants. 2620 Midpoint Drive is located seven (7) minutes south of the I-70/I-435 interchange, and only twelve (12) minutes north of the I-435/I-35 interchange.

Property Features:

- Upscale, protected business park environment
- I-1 Industrial Zoning
- 50% tax abatement program for qualifying projects
- Site Size: Approximately 6.11 Acres (266,042 SF)
- Screened-Fenced storage possible
- Property Taxes: \$20,036.28 (2023)
- Sale Price: \$1,100,000 (\$4.13 psf)



Tom Kennedy, SIOR

tom@nai-heartland.com

+1 913 515 3758

Logan Rose

lrose@nai-heartland.com

+1 913 890 2013

NO WARRANTY OR REPRESENTATION, EXPRESS OR IMPLIED, IS MADE AS TO THE ACCURACY OF THE INFORMATION CONTAINED HEREIN, AND THE SAME IS SUBMITTED SUBJECT TO ERRORS, OMISSIONS, CHANGE OF PRICE, RENTAL OR OTHER CONDITIONS, PRIOR SALE, LEASE OR FINANCING, OR WITHDRAWAL WITHOUT NOTICE, AND OF ANY SPECIAL LISTING CONDITIONS IMPOSED BY OUR PRINCIPALS NO WARRANTIES OR REPRESENTATIONS ARE MADE AS TO THE CONDITION OF THE PROPERTY OR ANY HAZARDS CONTAINED THEREIN ARE ANY TO BE IMPLIED.

NAIHeartland

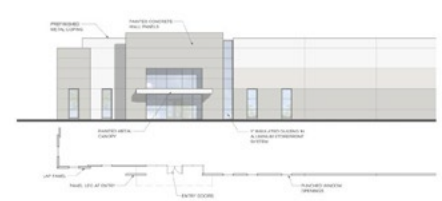
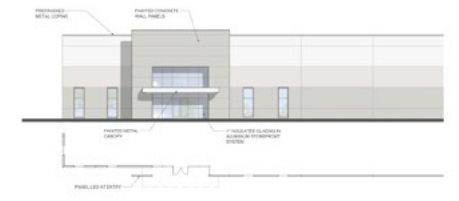
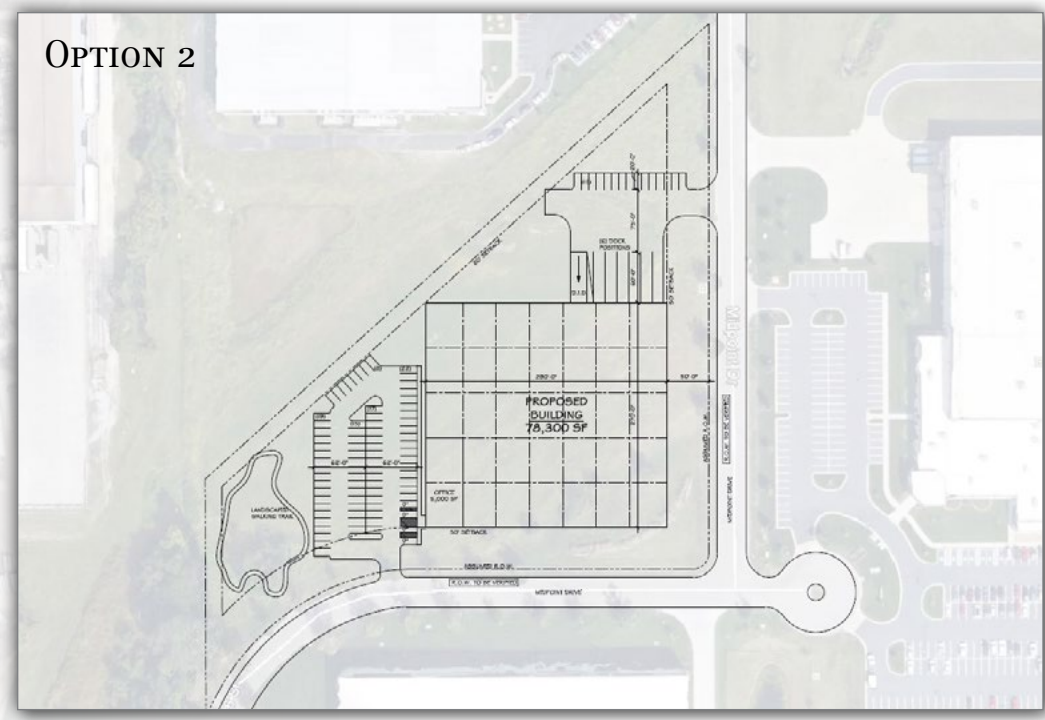
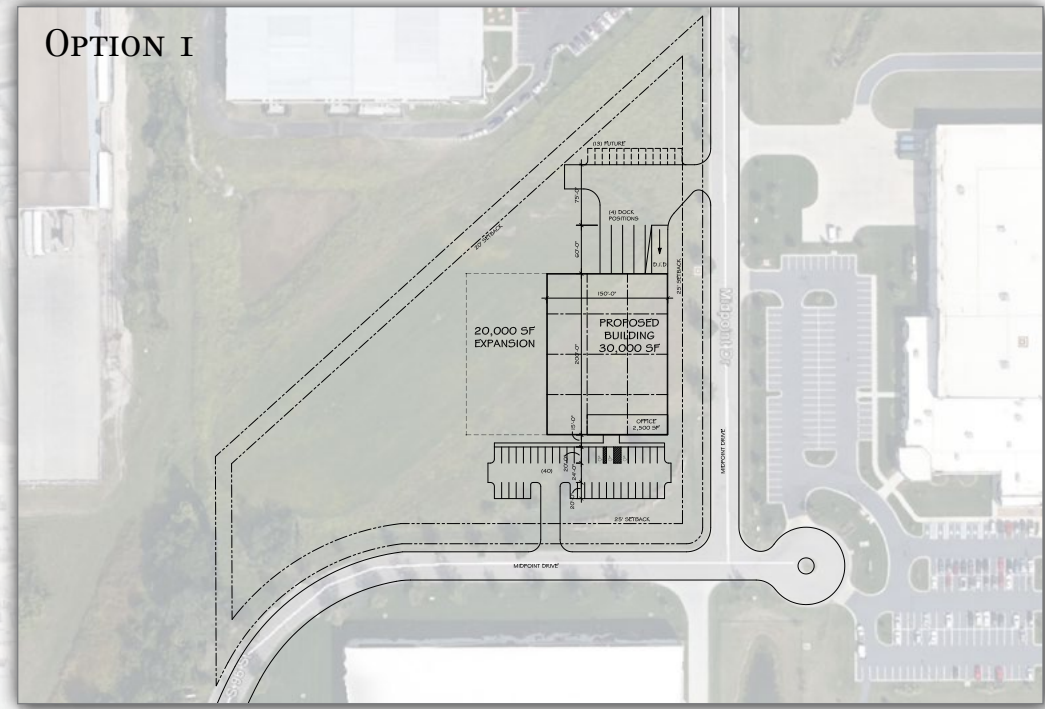
Midpoint Corporate Centre

2620 Midpoint Drive | Edwardsville, Kansas

2620 Midpoint Drive | Edwardsville, Kansas



Sample Site Plans:



Tom Kennedy, SIOR
tom@nai-heartland.com
+1 913 515 3758

Logan Rose
lrose@nai-heartland.com
+1 913 890 2013

Sample Site Plans (cont.)

