

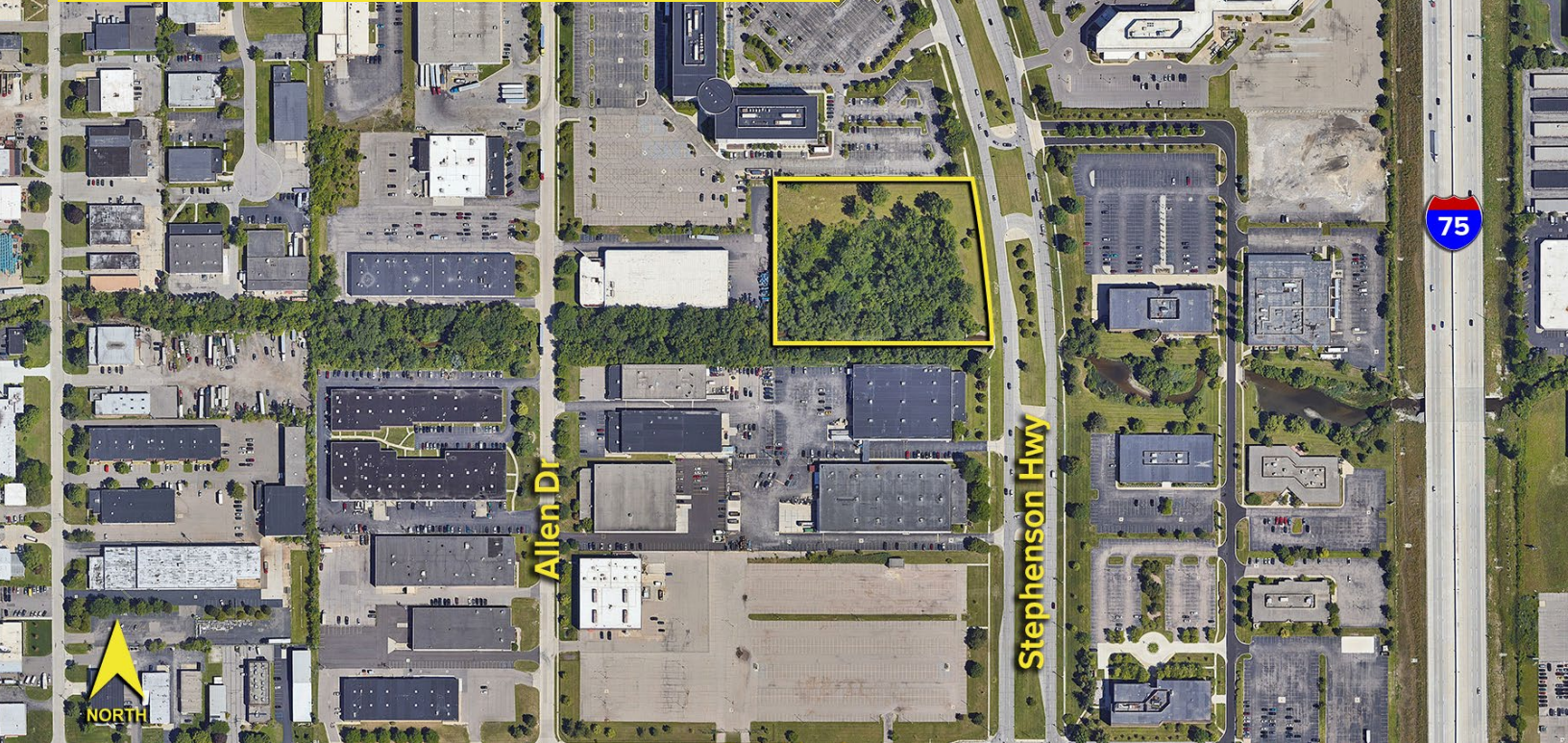
STEPHENSON HIGHWAY TROY, MICHIGAN



**SIGNATURE
ASSOCIATES**
KNOW SIGNATURE | KNOW RESULTS

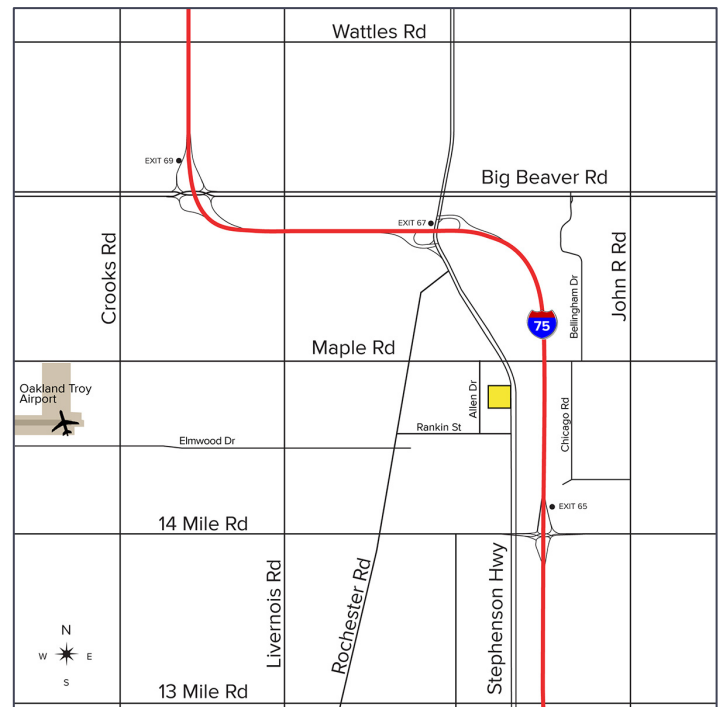
LAND FOR SALE
4.586 Acres Available

HIGH IMAGE SITE



PROPERTY FEATURES

- 4.586 acres available
- One of the last remaining parcels in Troy
- South end of parcel encumbered by Oakland County Drain
- Zoned Regional Center
- Sale Price: \$1,900,000 (\$414,847.16/acre)



For more information, please contact:

PAUL HOGE
(248) 948 0103
paulhoge@signatureassociates.com

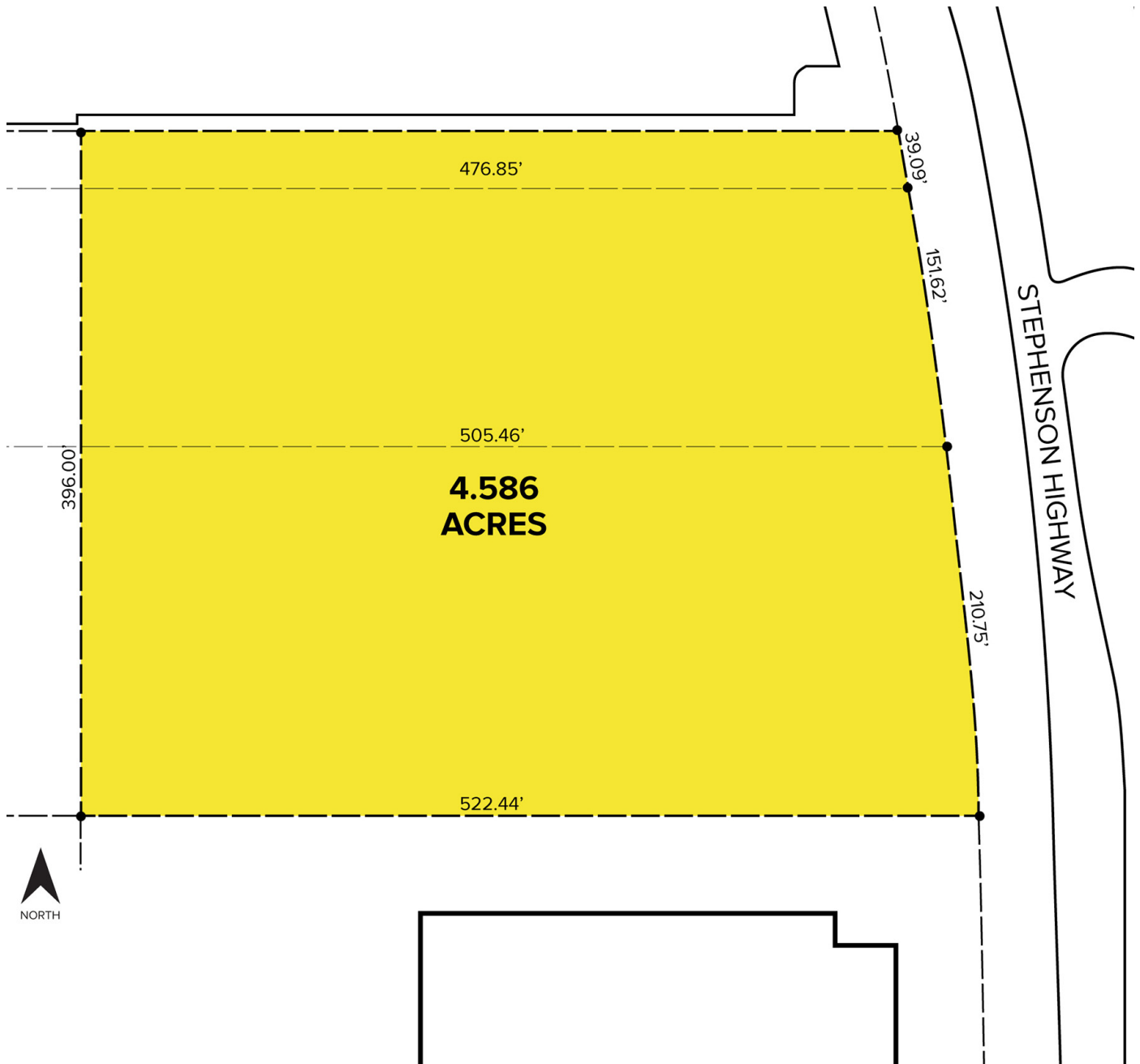
SIGNATURE ASSOCIATES
One Towne Square, Suite 1200
Southfield, MI 48076
www.signatureassociates.com

Stephenson Highway – Troy, Michigan

Land For Sale

4.586
Acres
AVAILABLE

Site Plan



For more information, please contact:

PAUL HOGE
(248) 948 0103
paulhoge@signatureassociates.com

SIGNATURE ASSOCIATES
One Towne Square, Suite 1200
Southfield, MI 48076
www.signatureassociates.com