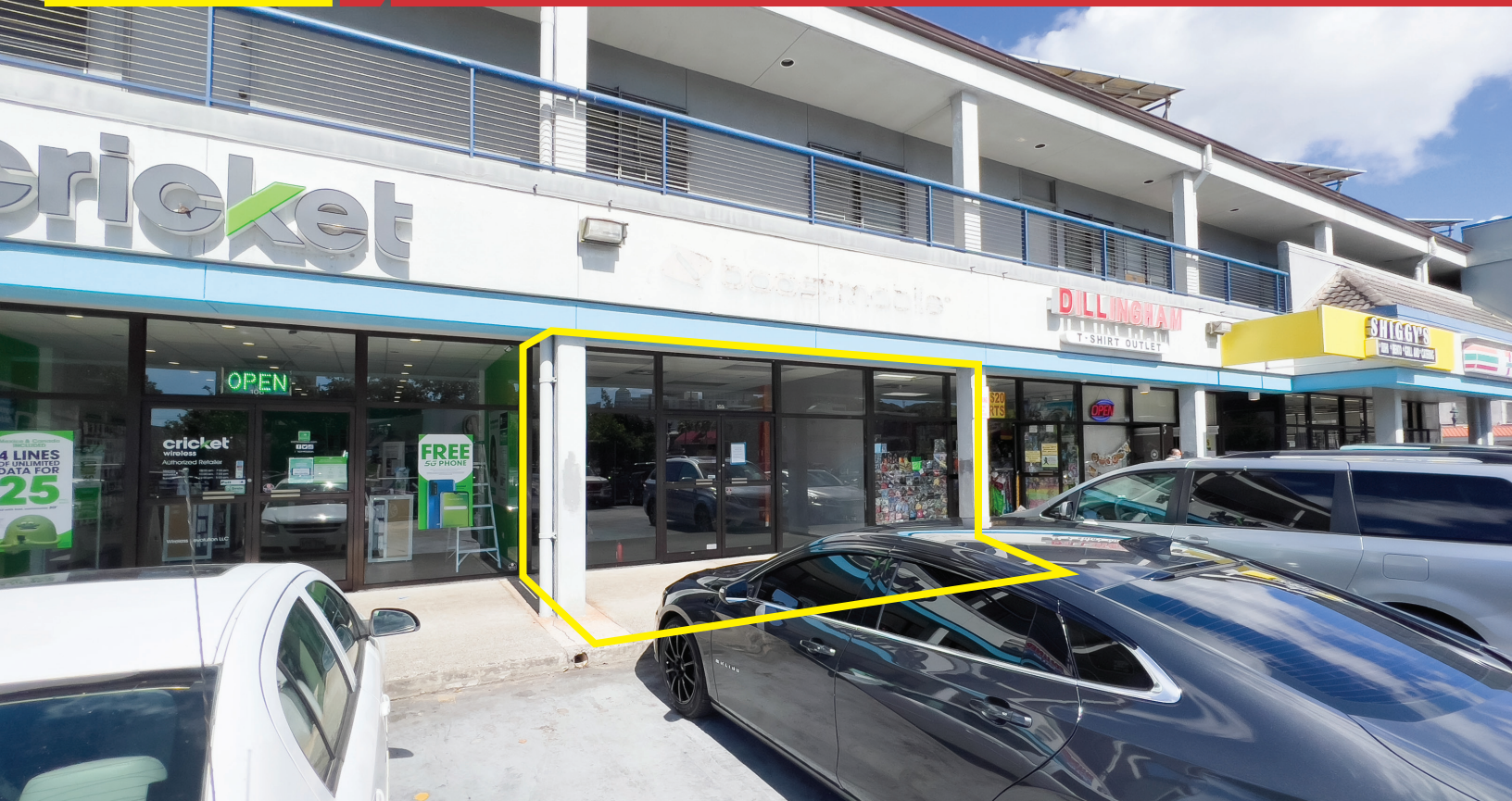


**FOR
LEASE**



555 N KING ST SUITE 105

Retail Space Just Outside Of Downtown Honolulu



SNAPSHOT

Area:	Kalihi
Building Type:	Retail
Availability:	972 SF
Base Rent:	\$3.45 per SF/mo
Estimated CAM:	\$1.26 per SF/mo
Zoning:	BMX-3

PROPERTY DETAILS

- Bus Stop
- High traffic intersection
- Proximity to Costco, Honolulu Community College, Downtown
- Lots of parking on street level and basement
- Tenant includes Jollibee, 7-11, Jiffy Lube, Shiggy's, Dental Office, Fast Signs, etc.
- High traffic location with great visibility and exposure
- Floor to ceiling clear glass frontage



Vanessa Kop (B)
RB-20654
808-256-0370
vkop@cbi-hawaii.com

Yuuki Inagawa (S)
RS-79726
808-342-3039
yinagawa@cbi-hawaii.com

The information contained herein has been obtained from sources reliable but has not been verified and no guarantee, Warranty or representation, either express or implied, is made with respect to such information. Terms or sale or lease and availability are subject to change or withdrawal without notice.



Vanessa Kop (B)
RB-20654
808-256-0370
vkop@cbi-hawaii.com

Yuuki Inagawa (S)
RS-79726
808-342-3039
yinagawa@cbi-hawaii.com

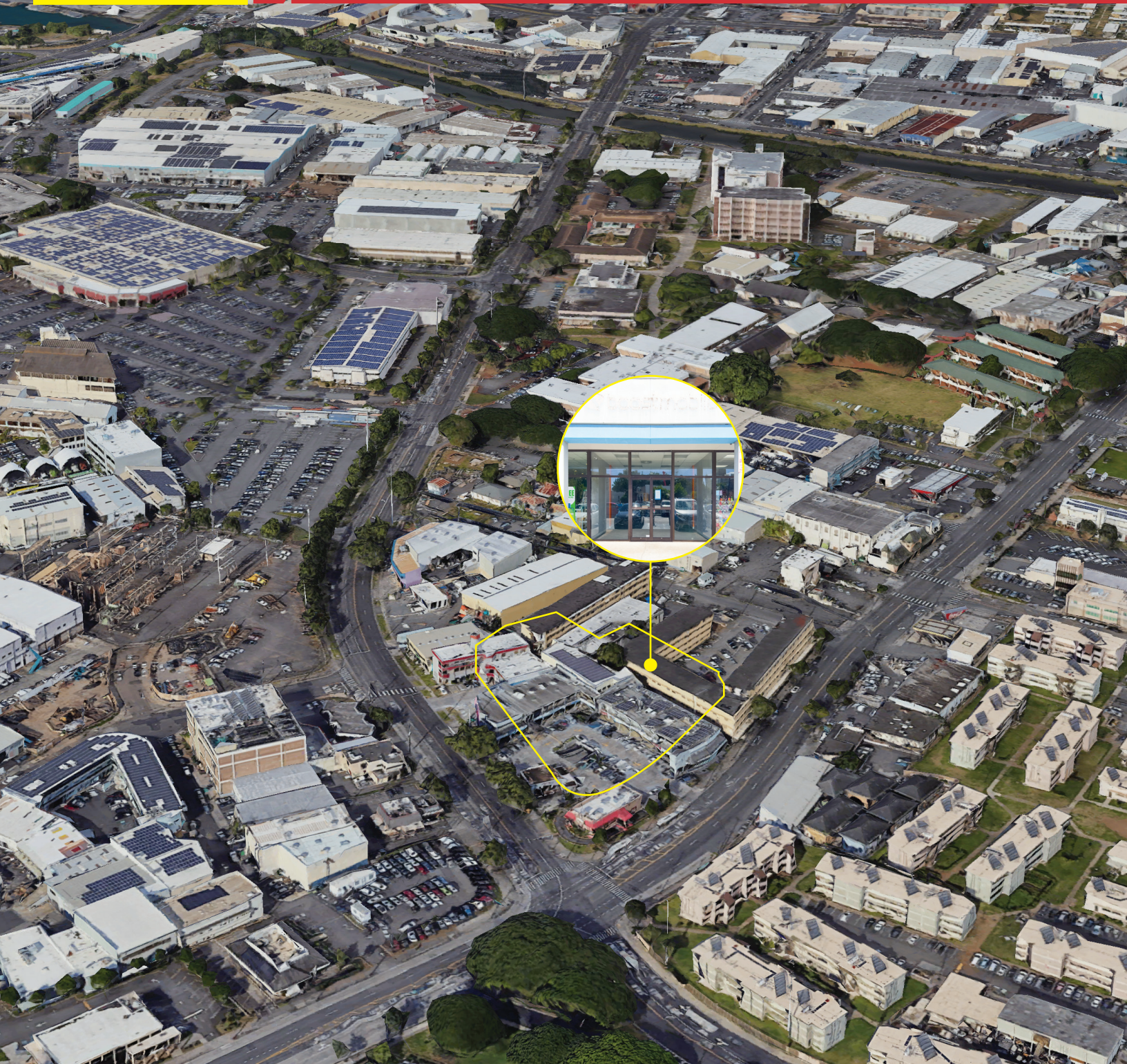
The information contained herein has been obtained from sources reliable but has not been verified and no guarantee, Warranty or representation, either express or implied, is made with respect to such information. Terms or sale or lease and availability are subject to change or withdrawal without notice.

**FOR
LEASE**



555 N KING ST SUITE 105

Retail Space Just Outside Of Downtown Honolulu



Vanessa Kop (B)

RB-20654

808-256-0370

vkop@cbi-hawaii.com

Yuuki Inagawa (S)

RS-79726

808-342-3039

yinagawa@cbi-hawaii.com

The information contained herein has been obtained from sources reliable but has not been verified and no guarantee, Warranty or representation, either express or implied, is made with respect to such information. Terms or sale or lease and availability are subject to change or withdrawal without notice.