



2480 W Campus Dr

Mount Pleasant, Michigan 48858

Property Highlights

- 5 building office complex
- Directly adjacent to Central Michigan University
- Easy access to US 127
- Minutes from restaurants, shopping and downtown
- Flexible floorplan layouts
- Private entries

Offering Summary

Lease Rate:	\$10.00 SF/yr (NNN)
Building Size:	44,073 SF
Available SF:	4,300 - 8,564 SF

Spaces	Lease Rate	Space Size
Building A	\$10.00 SF/yr	8,564 SF
C-200	\$10.00 SF/yr	4,300 SF

For More Information



Nick Vlahakis

Principal

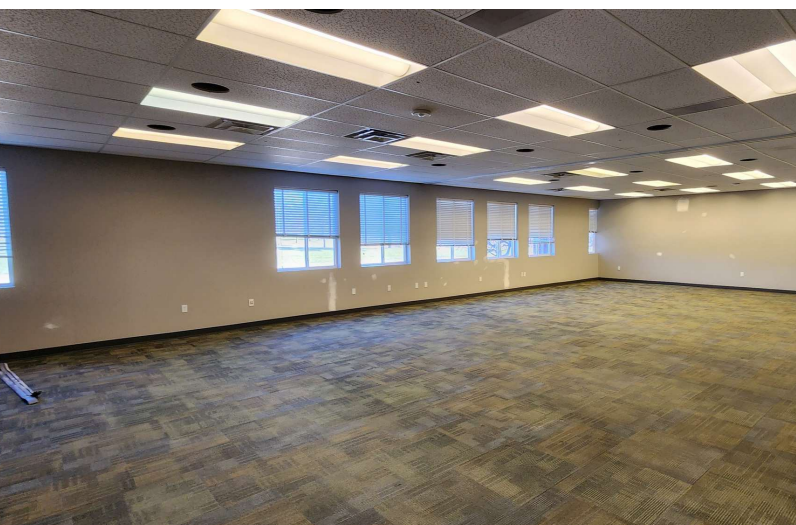
O: 517 487 9222 | C: 517 881 6088
nvlahakis@naimidmichigan.com

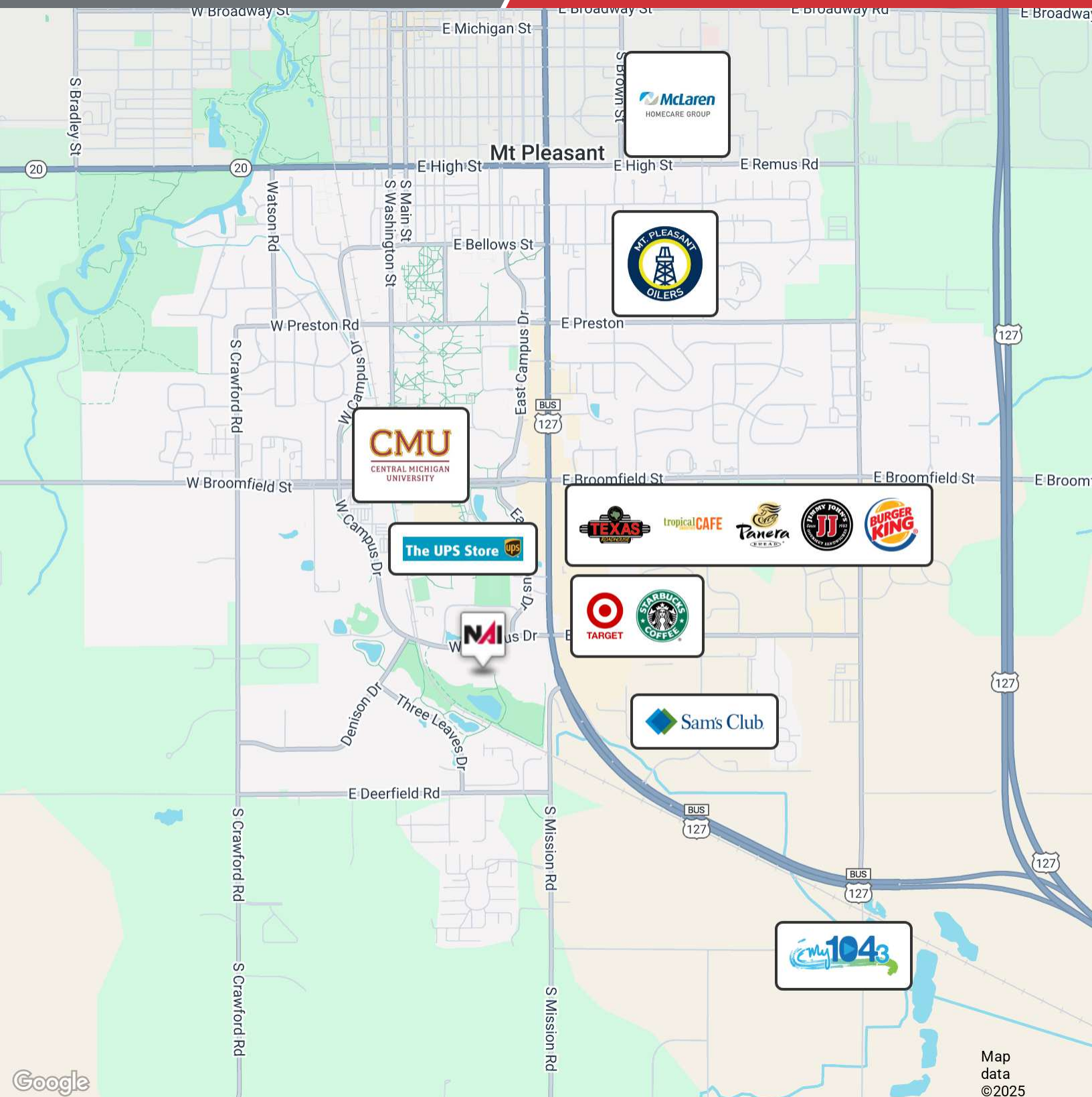


Jeffrey Branch

Commercial Advisor

O: 517 487 9222 | C: 517 899 6368
jbranch@naimidmichigan.com







Population	1 Mile	3 Miles	5 Miles
Total Population	7,397	29,438	36,567
Average Age	26	33	35
Average Age (Male)	0	0	0
Average Age (Female)	0	0	0
Households & Income	1 Mile	3 Miles	5 Miles
Total Households	2,421	12,067	14,942
# of Persons per HH	3.1	2.4	2.4
Average HH Income	\$46,706	\$61,415	\$69,783
Average House Value	\$220,855	\$210,795	\$215,981

Demographics data derived from AlphaMap