

951 JONES STREET
HOWELL, MICHIGAN

INDUSTRIAL FOR SALE
17,310 Square Feet Available



**SIGNATURE
ASSOCIATES**
KNOW SIGNATURE | KNOW RESULTS



PROPERTY FEATURES

- 17,310 square feet available
- 3,000 square feet of office space
- 18' clear height
- (1) 12' x 14' grade level door, (2) truckwells
- 1000 amps, 240 volts, heavy power
- Beautifully renovated and maintained facility with updated offices
- About ¼ mile from I-96 and close to all services
- Fenced outside storage
- Sale Price: \$2,800,000 (\$161.76/sq. ft.)



For more information, please contact:

JIM MONTGOMERY
(248) 359 0614

jmontgomery@signatureassociates.com

CHRIS D'ANGELO
(248) 948 0109

cdangelo@signatureassociates.com

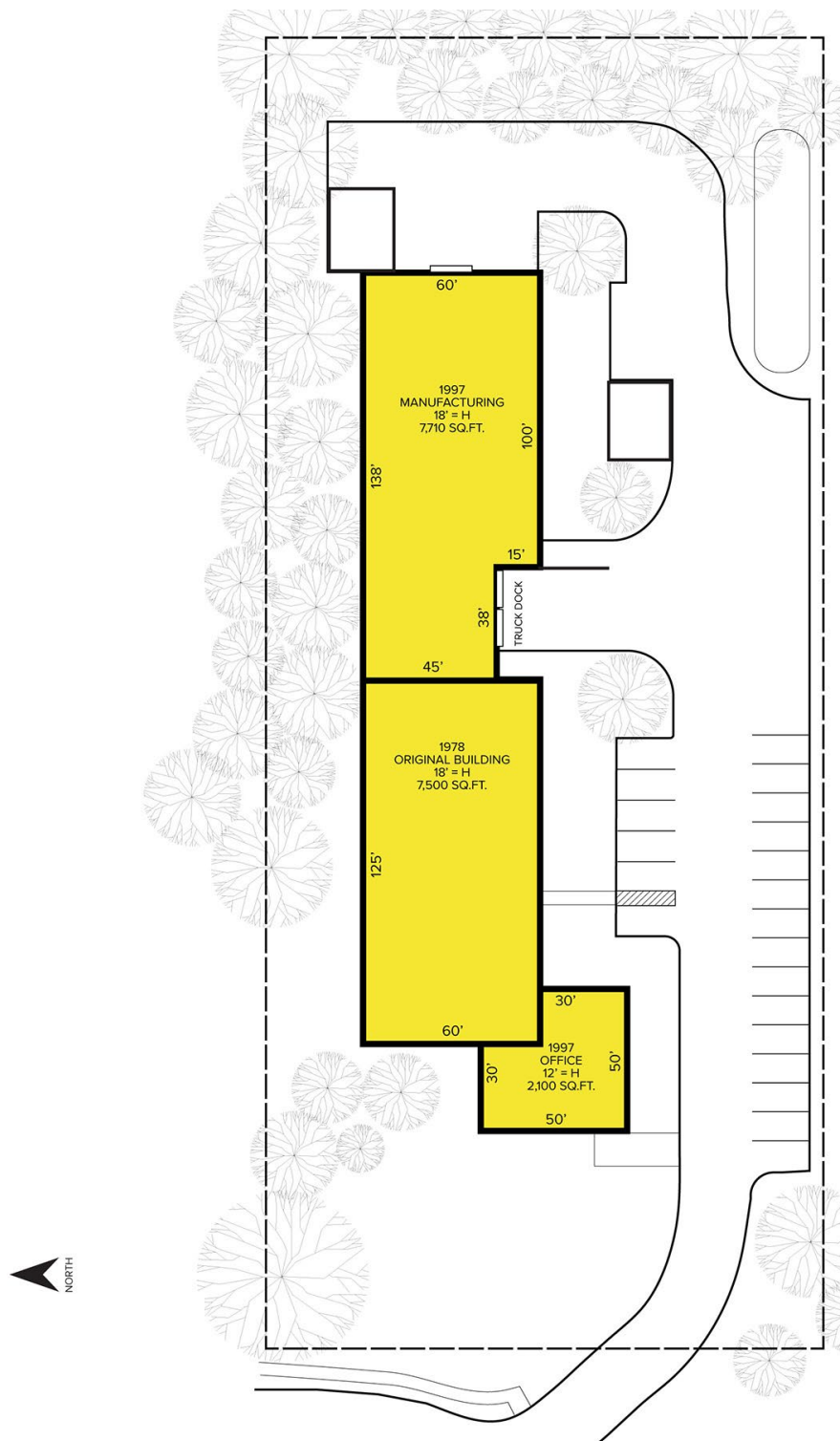
SIGNATURE ASSOCIATES
One Towne Square, Suite 1200
Southfield, MI 48076
www.signatureassociates.com

951 Jones Street – Howell, Michigan

Industrial For Sale

17,310
Square Feet
AVAILABLE

Site Plan



For more information, please contact:

JIM MONTGOMERY

(248) 359 0614

jmontgomery@signatureassociates.com

CHRIS D'ANGELO

(248) 948 0109

cdangelo@signatureassociates.com

SIGNATURE ASSOCIATES

One Towne Square, Suite 1200

Southfield, MI 48076

www.signatureassociates.com

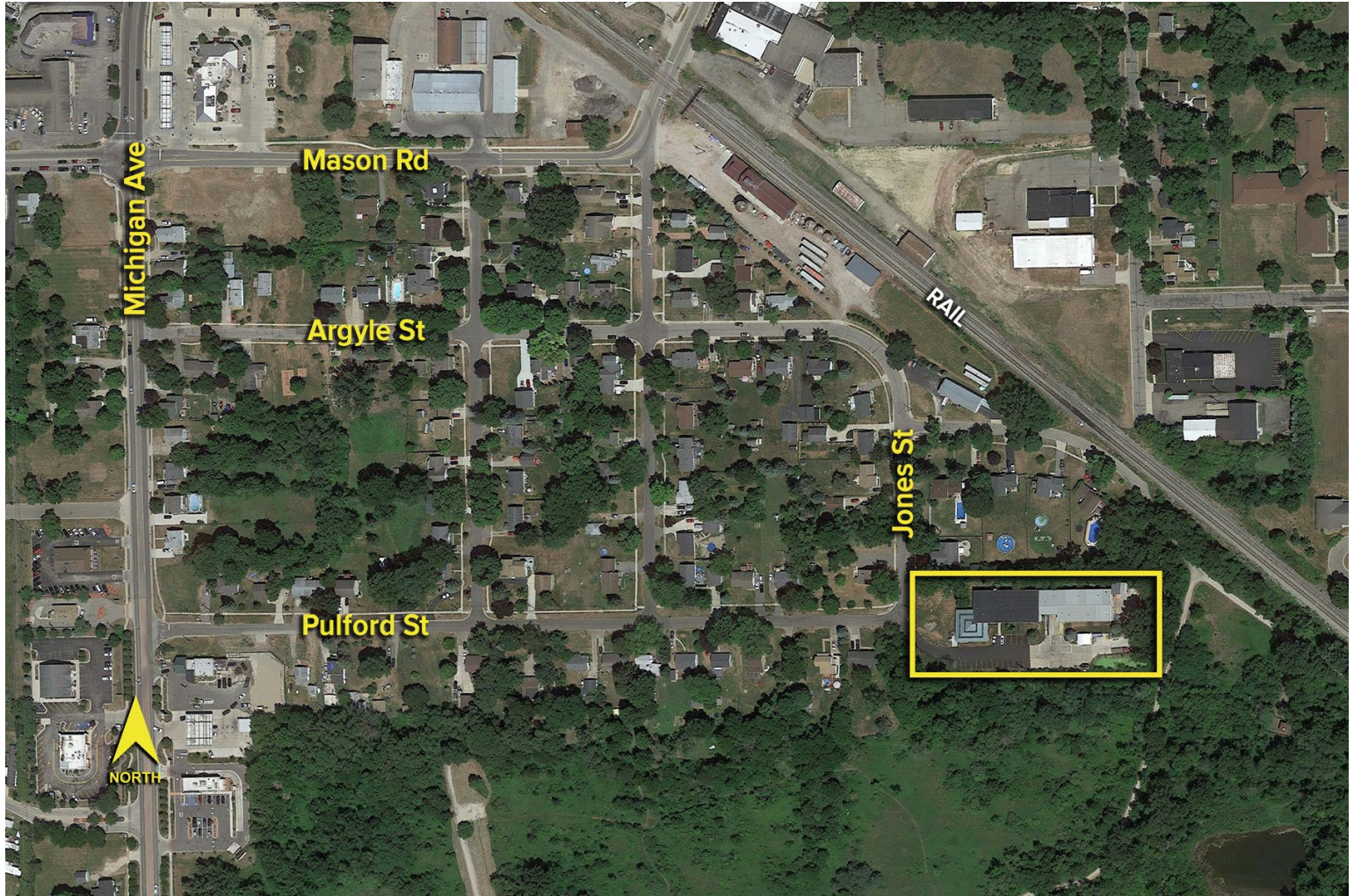
Information is subject to verification and no liability for errors or omissions is assumed. Price is subject to change and listing withdrawal.

951 Jones Street – Howell, Michigan

Industrial For Sale

17,310
Square Feet
AVAILABLE

Aerial



For more information, please contact:

JIM MONTGOMERY

(248) 359 0614

jmontgomery@signatureassociates.com

CHRIS D'ANGELO

(248) 948 0109

cdangelo@signatureassociates.com

SIGNATURE ASSOCIATES

One Towne Square, Suite 1200

Southfield, MI 48076

www.signatureassociates.com

Information is subject to verification and no liability for errors or omissions is assumed. Price is subject to change and listing withdrawal.