

AVISON
YOUNG

Rare Build- to-Suit MOB

+/- 15,000 SF medical
office building in the
heart of Glen Mills

1720 Wilmington Pike,
Glen Mills, PA 19342



Contact our team for more information:

Scott Martin | Principal
610 389 4200
scott.martin@avisonyoung.com

Patrick Kelley | Principal
215 901 1053
patrick.kelley@avisonyoung.com

John Sudjian | Associate
610 570 9407
john.sudjian@avisonyoung.com

Avison Young | +1 610 276 1079 | 300 Barr Harbor Drive, Suite 150, Conshohocken, PA 19428

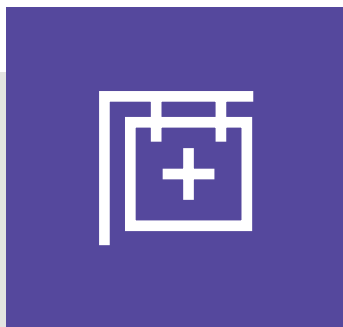
Proposed medical facility

1720 Wilmington Pike in Glen Mills, PA, is a prime development site approved for a +/- 15,000 SF or larger medical office building, ideal for a variety of healthcare providers.

Strategically located along Route 202, this site offers exceptional visibility, ample parking, and signalized access for patients and staff. With strong demand for medical services in the area, this new development presents an outstanding opportunity for medical operators looking to establish or expand their practice in a thriving community.



PROPERTY HIGHLIGHTS:



Build-to-suit medical center

Minimum 15,000 SF ground floor medical space that can be adapted for various healthcare needs.



High visibility area

Situated along Route 202, with over **37,500 vehicles per day**, the location benefits from high exposure and proximity to thriving retail, dining, and residential developments.



Prime location & access

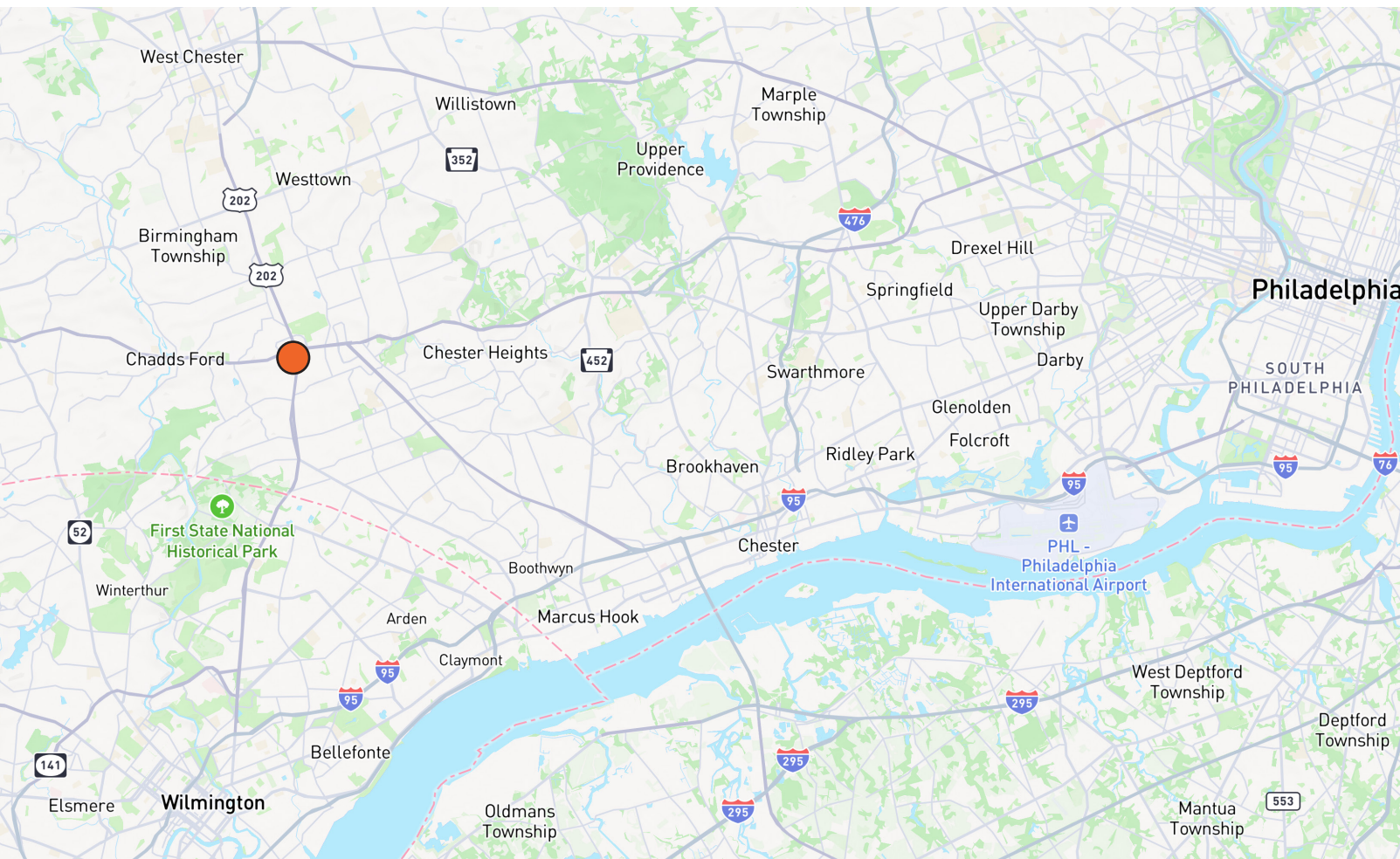
Situated along **Route 202**, the property offers convenient access to major transportation routes, making it an attractive location for both patients and healthcare staff.



Ample parking on property

Designed for convenience with **121 parking spots** to accommodate both staff and patients, along with private ambulance loading spot.

Location overview



6.9 miles
West Chester, PA

9.6 miles
Media, PA

10.0 miles
Wilmington, DE

26.4 miles
Philadelphia, PA

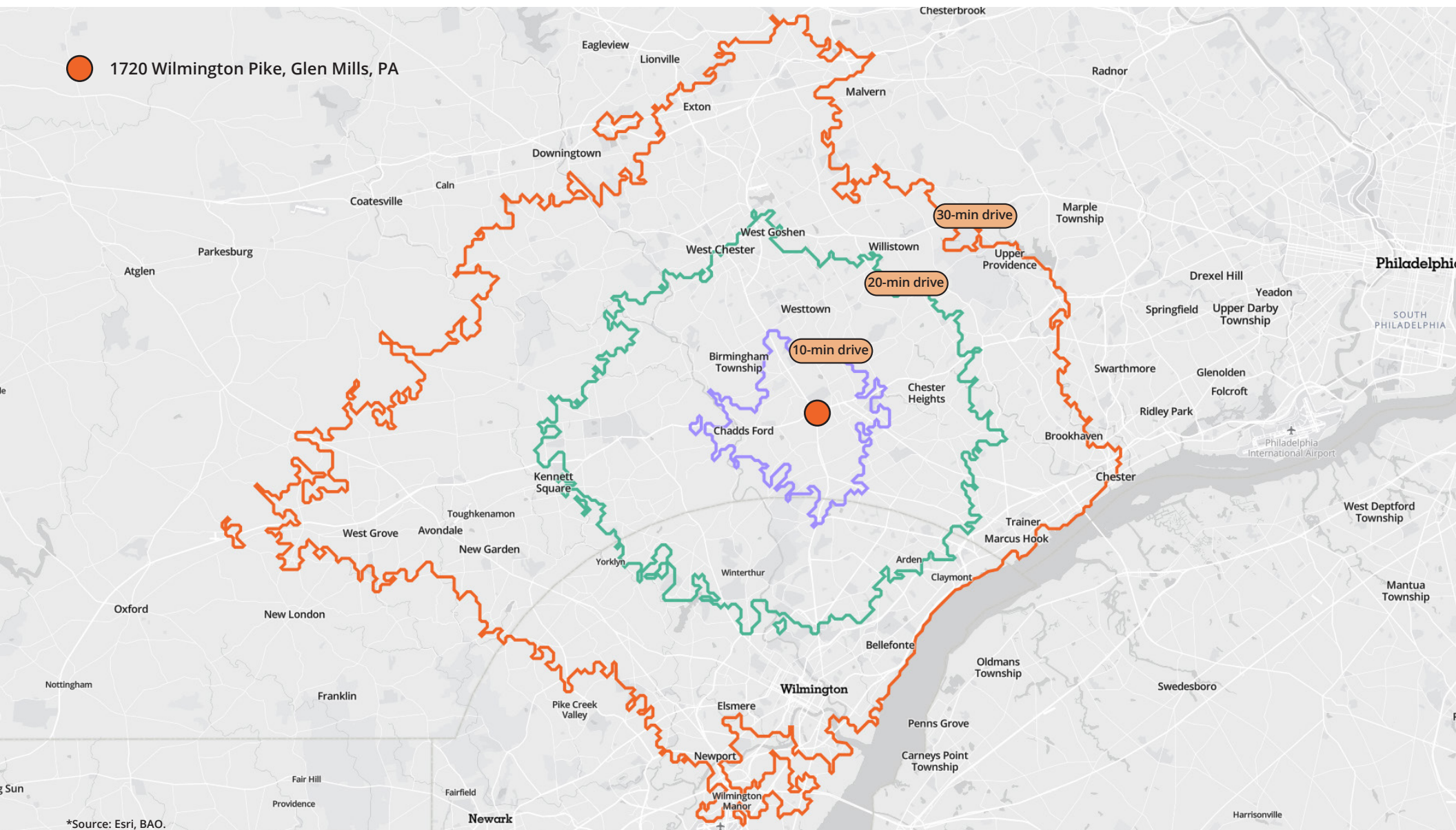
With convenient access to West Chester, Media, and Wilmington, this location is perfectly positioned to serve a diverse and growing patient base. Situated along major transportation routes, the property offers medical operators an ideal opportunity to establish or expand their presence in the region.

Location & access



1720 Wilmington Pike offers unmatched visibility and accessibility along U.S. Route 202 in Glen Mills, PA. Positioned directly across from the Brandywine Mills Shopping Center and minutes from major highways, the site provides seamless access for patients and staff traveling from nearby communities. This ±15,000 SF medical office development sits in a rapidly growing area with strong demand for healthcare services.

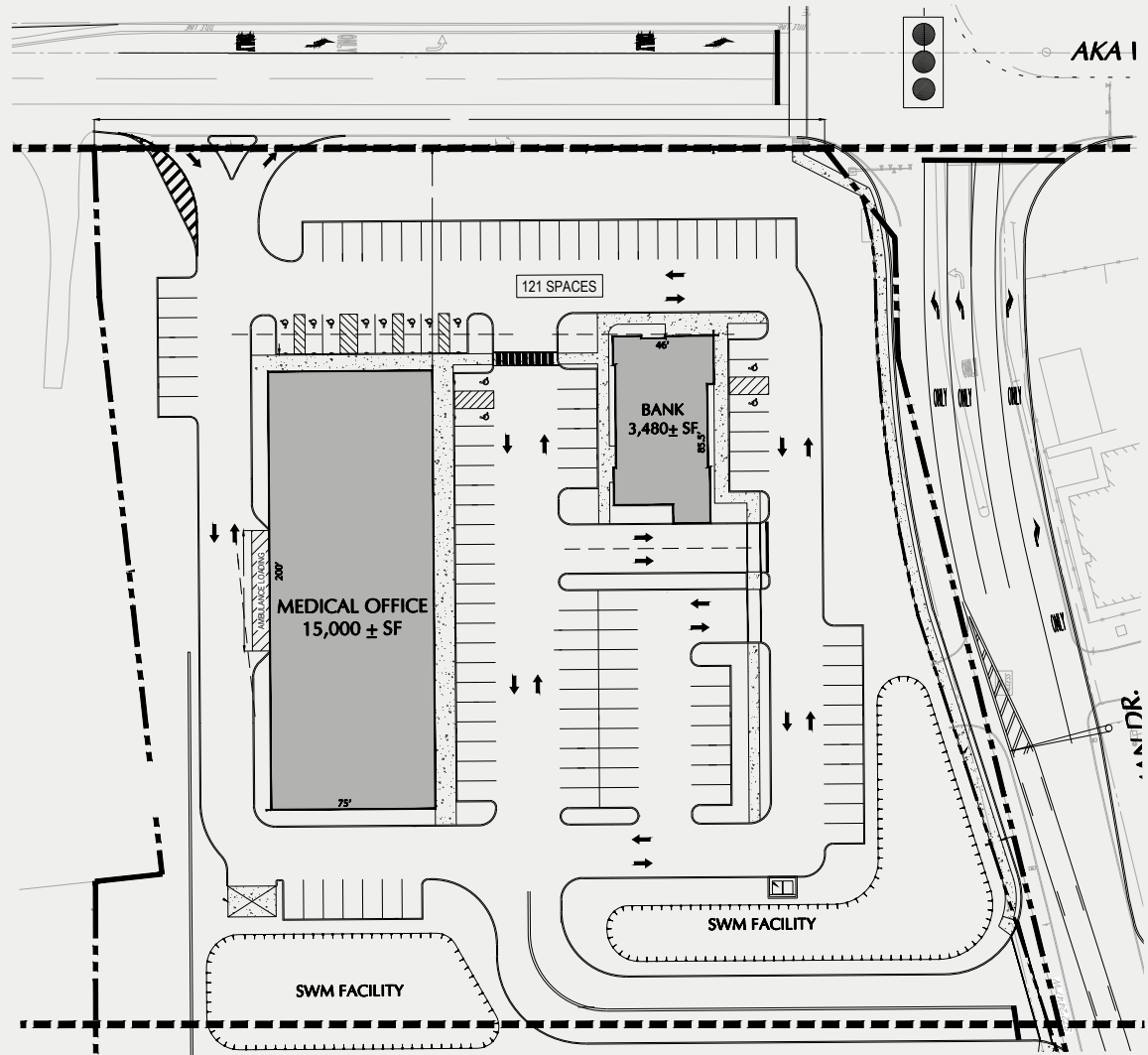
Driving times



Medical office opportunity

1st Floor | ±15,000 SF

- **104 parking spaces** dedicated for staff, patients, and ambulance access
- **17 parking spaces** allocated to the bank
- **Located directly across from Brandywine Mills Shopping Center**, offering nearby retail and dining
- **Build-to-suit opportunity** to meet unique medical office requirements
- **Prime visibility along Route 202**, with high traffic counts and excellent exposure
- **Zoned for medical office use**, ideal for a variety of healthcare providers
- **Easily accessible from major transportation routes**, ensuring convenience for patients and staff



Location demographics



492,279

TOTAL LOCAL
POPULATION



\$116,437

AVE HOUSEHOLD
INCOME



196,330

TOTAL LOCAL
HOUSEHOLDS



42 YO

MEDIAN
AGE



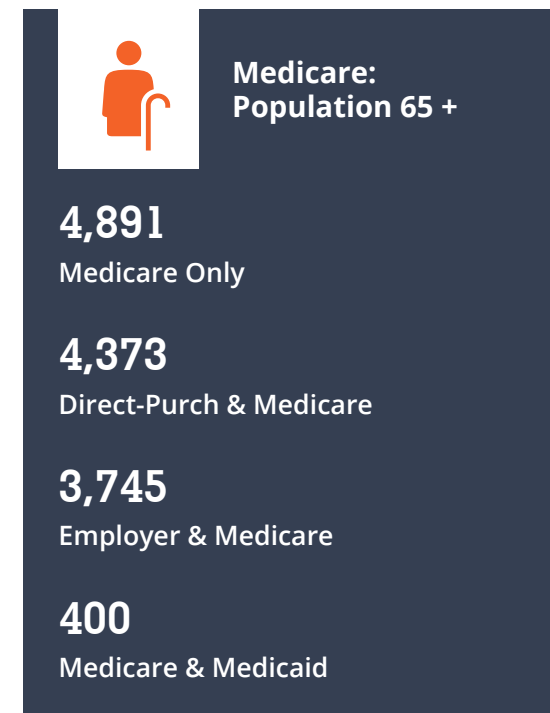
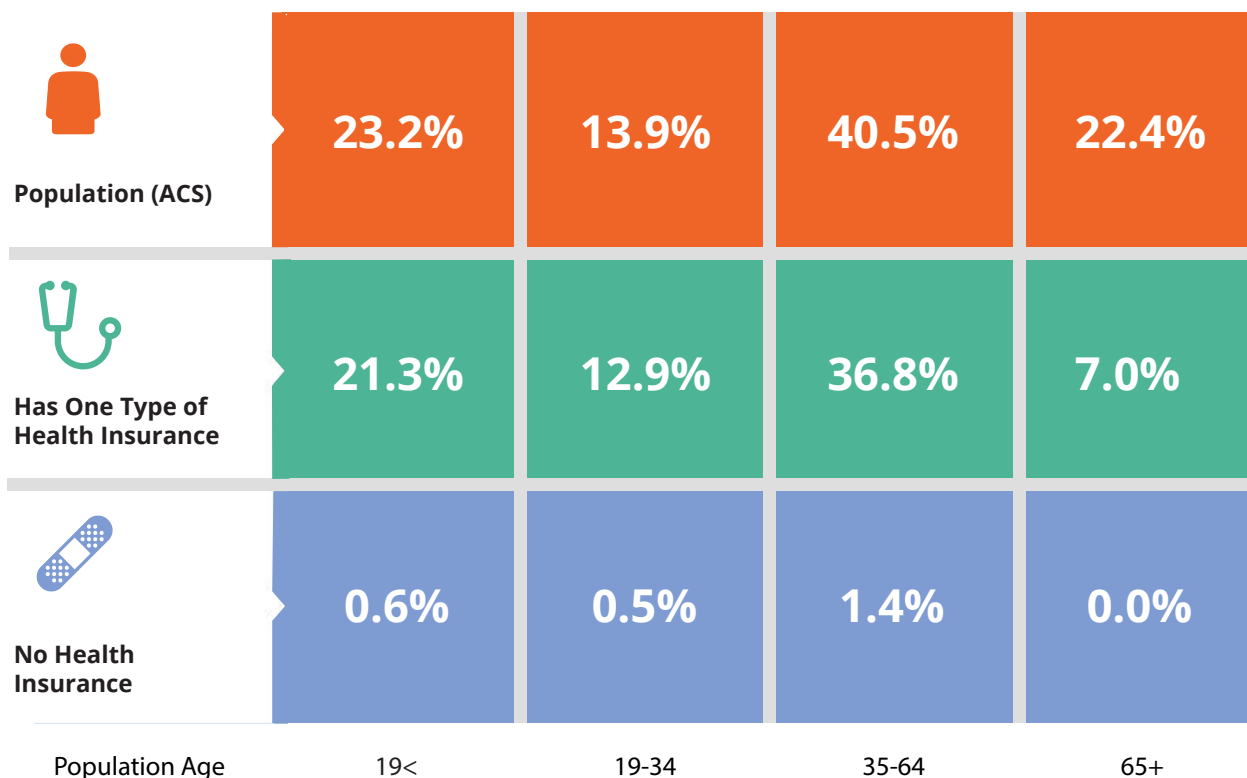
24,063

POPULATION OVER
65 YO



*Source: Costar. 10 mile radius

5-mile health care facts



\$8,084
ANNUAL HEALTH
INSURANCE EXPENDITURES

\$4,393
MEDICAL CARE

Blue Cross/Blue Shield	\$2,175.2
Medicare Payments	\$1,717.7
Physician Services	\$547.1
Dental Services	\$867.0

Eyecare Services	\$160.3
Lab Tests/X-rays	\$140.0
Hospital Room & Service	\$437.8
Convalescent/Nursing Home Care	\$88.5

*Source: Esri Business Analyst



Get in touch:

Scott Martin | Principal

610 389 4200

scott.martin@avisonyoung.com

Patrick Kelley | Principal

215 901 1053

patrick.kelley@avisonyoung.com

John Sudjian | Associate

610 570 9407

john.sudjian@avisonyoung.com

Avison Young | +1 610 276 1079 | 300 Barr Harbor Drive, Suite 150, Conshohocken, PA 19428

©2024 Avison Young - Philadelphia, LLC. All Rights Reserved.

The information provided herein was obtained from sources deemed reliable and is believed to be true; it has not been verified and as such, cannot be warranted nor form any part of any future contract.