

Summit Woods III

50 E Business Way



SHELBOURNE

CBRE

Building Highlights:



Total Building – 110,000 RSF



Efficient Floorplates – 27,500 RSF



10' Finished Ceilings



45' Column Free Clear Span



5 per 1,000 SF Parking Ratio



Monument Signage



Highly Visible and Accessible to I-275
& I-71 (1 minute from I-275 and Reed
Hartman Interchange)



\$14.50/SF Net



\$8.50/SF Opex



Million Dollar Renovation Underway Including:



Exterior Renovations - Parking Lot Resurfacing, Landscaping, Façade



2-Story Atrium Lobby and Common Areas



New Tenant Lounge



Café



Conference Center



Fitness Center



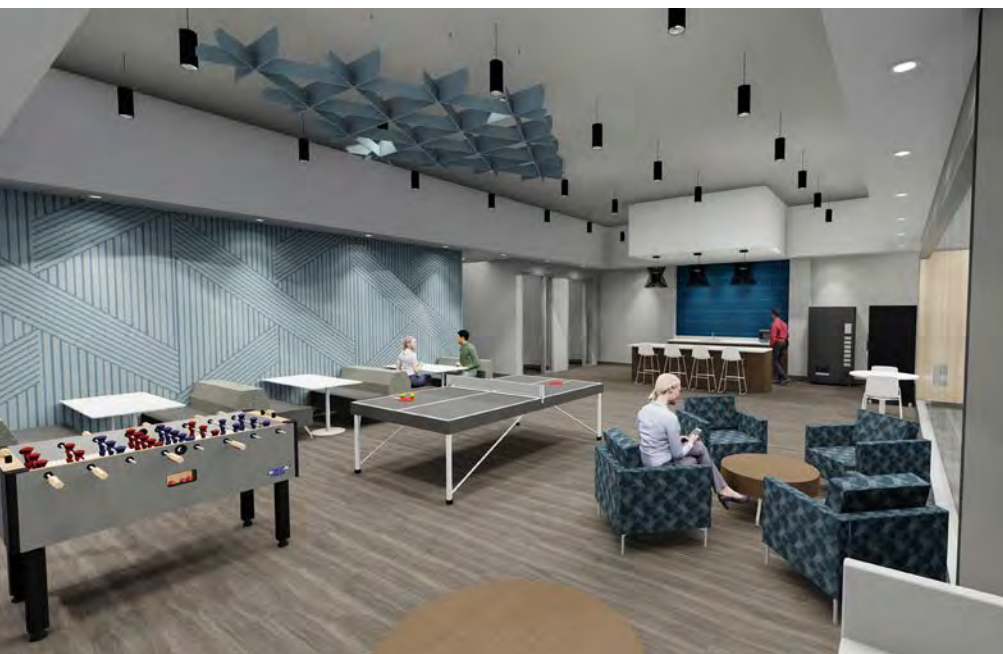
Restrooms



November 2022 Completion



Premier Amenities



Premier Amenities



Location, Restaurants + Amenities

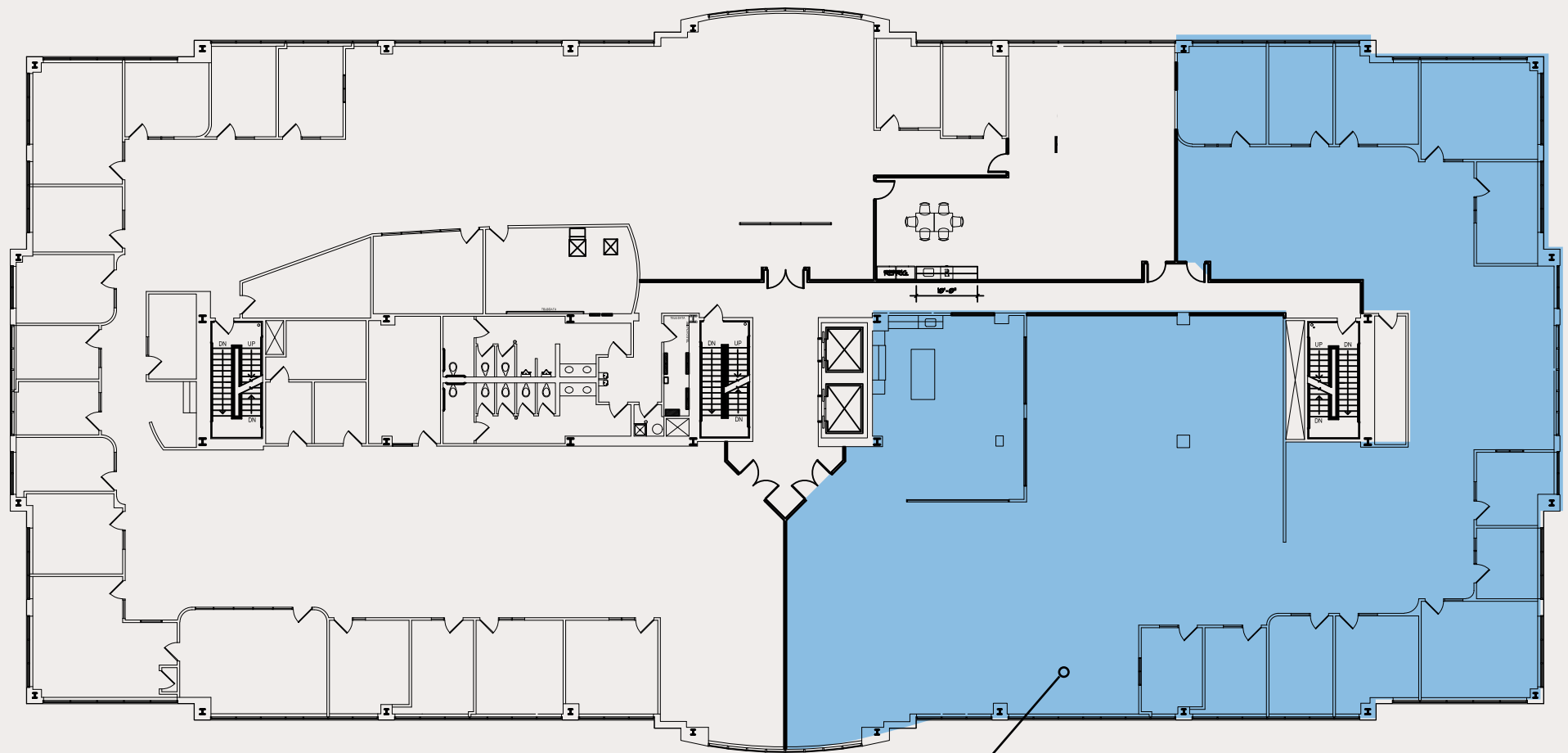




Floor Plans



Third Floor



AVAILABLE
SUITE 350 / 11,346 RSF

[VIEW VIDEO](#)

Summit Woods III

50 E Business Way

CHRIS VOLLMER, JR.

First Vice President

513 236 2163

chrisjr.vollmer@cbre.com

SCOTT YARDS

Senior Vice President

513 315 5800

scott.yards@cbre.com



©2022 CBRE, Inc. All rights reserved. This information has been obtained from sources believed reliable, but has not been verified for accuracy or completeness. You should conduct a careful, independent investigation of the property and verify all information. Any reliance on this information is solely at your own risk. CBRE and the CBRE logo are service marks of CBRE, Inc. All other marks displayed on this document are the property of their respective owners, and the use of such logos does not imply any affiliation with or endorsement of CBRE. Photos herein are the property of their respective owners. Use of these images without the express written consent of the owner is prohibited. PMStudio_August2022



SHELBOURNE

CBRE