

MASPETH, NEW YORK

# 57-00

## 49TH PLACE

NEW YORK'S PREMIER STORAGE AND DISTRIBUTION DISTRICT

LEASE OPPORTUNITY

**CBRE**



NEW YORK'S PREMIER

# STORAGE AND DISTRIBUTION

DISTRICT



**CEILING HEIGHT:**  
~ 26'

**COLUMN SPAN:**  
20' x 40'





# BUILDING EXTERIOR

Approximately **80,000 SF**  
with a **28,000 SF** lot.

There are two floors of well  
appointed offices connected to  
high ceiling warehouse space  
and a large private yard.

The building features 7 internal  
bays facing 49th Place, 2  
external docks in the rear of  
the building and 28 striped  
parking spots.

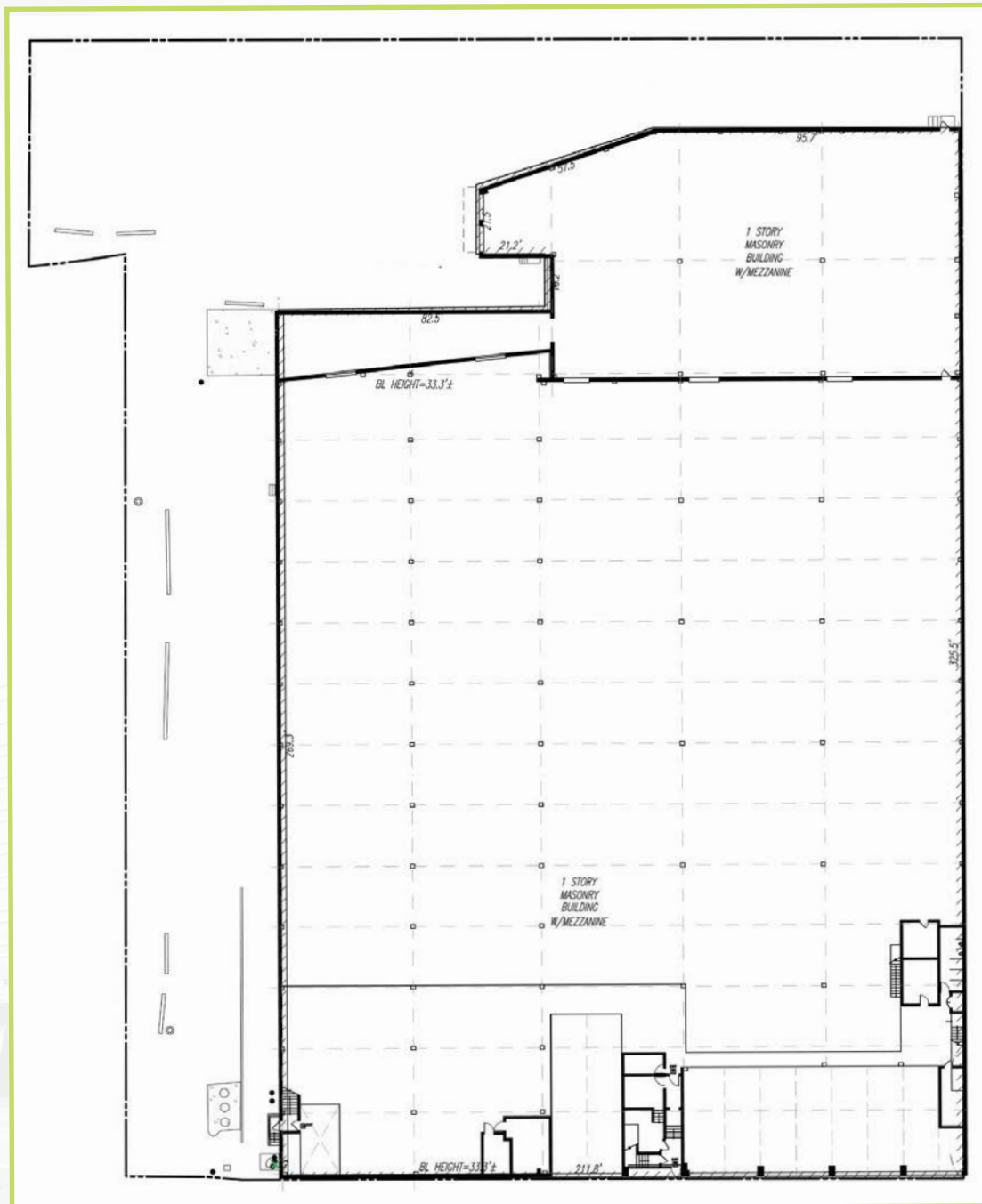


# THE WAREHOUSE



EXISTING CONDITIONS

# SITE PLAN





# NEW YORK CITY TAX MAP





# TRANSPORTATION

## MAP





# BUILDING AND PARKING

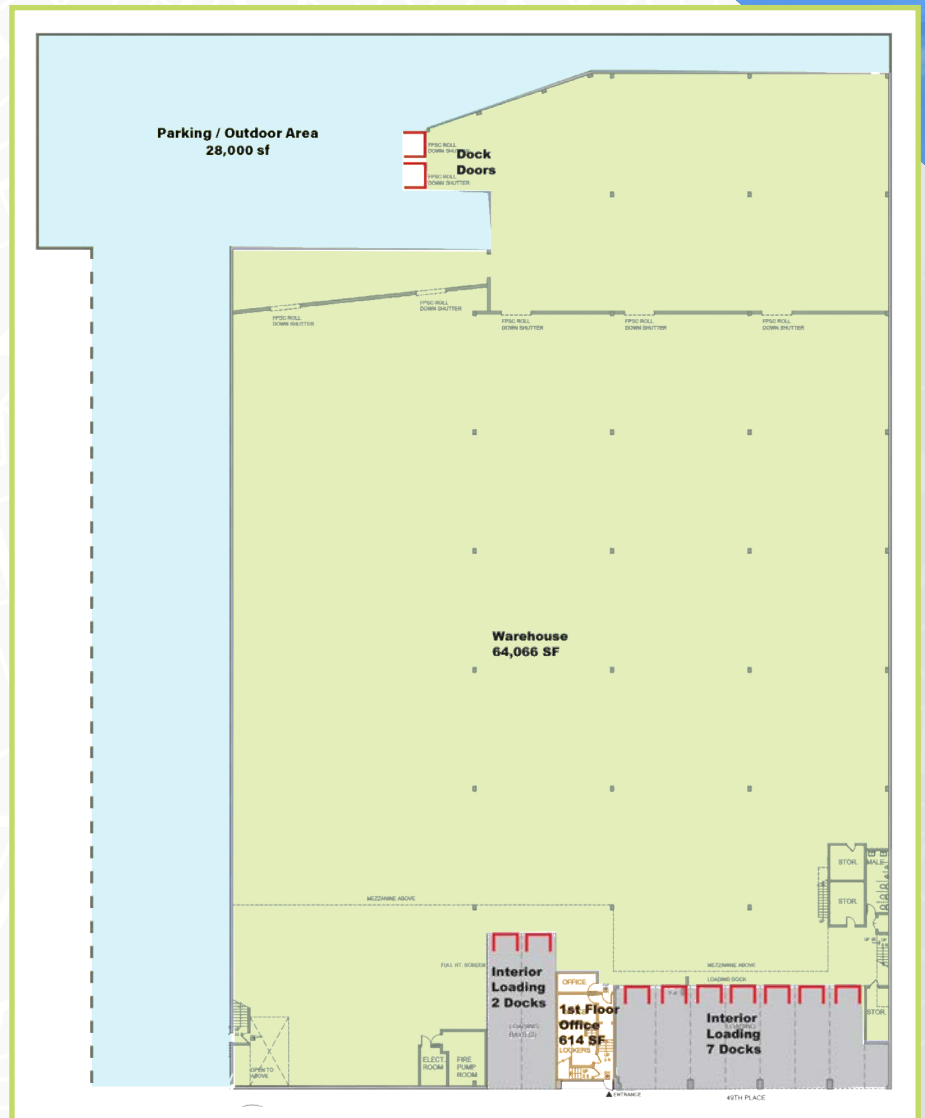
## 1ST FLOOR



**Warehouse**  
64,066 SF



**Office**  
614 SF



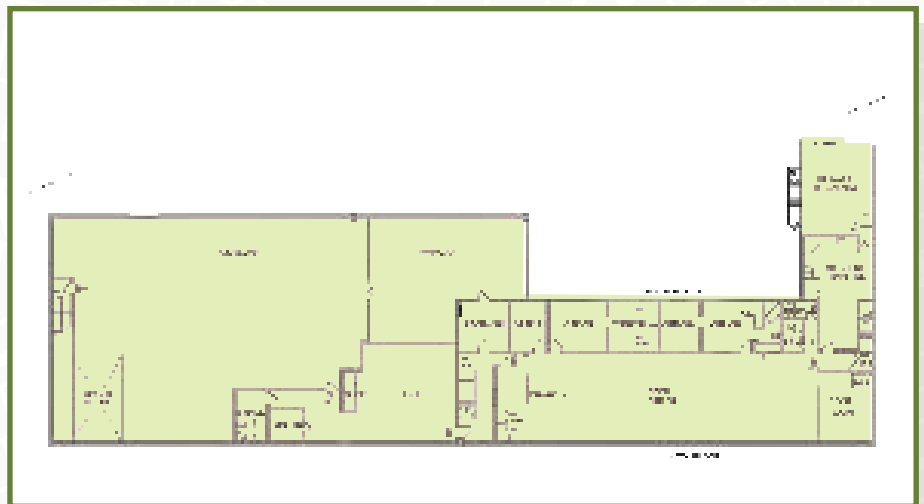
## 2ND FLOOR



**Storage/Other**  
11,076 SF



**Office**  
4,164 SF



MASPETH, NEW YORK

# 57-00 49TH PLACE

NEW YORK'S PREMIER STORAGE AND DISTRIBUTION DISTRICT

LEASE OPPORTUNITY

**John Reinertsen**

Senior Vice President

+1 718 289 7720

john.reinertsen@cbre.com

**Michael Lee**

Vice President

+1 718 289 7703

michael.lee@cbre.com

**Matthew Giordano**

Senior Associate

+1 718 289 7721

matthew.giordano@cbre.com

OWNED AND MANAGED BY:



© 2020 CBRE, Inc. The information contained in this document has been obtained from sources believed reliable. While CBRE, Inc. does not doubt its accuracy, CBRE, Inc. has not verified it and makes no guarantee, warranty or representation about it. It is your responsibility to independently confirm its accuracy and completeness. Any projections, opinions, assumptions or estimates used are for example only and do not represent the current or future performance of the property. The value of this transaction to you depends on tax and other factors which should be evaluated by your tax, financial and legal advisors. You and your advisors should conduct a careful, independent investigation of the property to determine to your satisfaction the suitability of the property for your needs. CBRE and the CBRE logo are service marks of CBRE, Inc. and/or its affiliated or related companies in the United States and other countries. All other marks displayed on this document are the property of their respective owners. Photos herein are the property of their respective owners and use of these images without the express written consent of the owner is prohibited.

**CBRE**