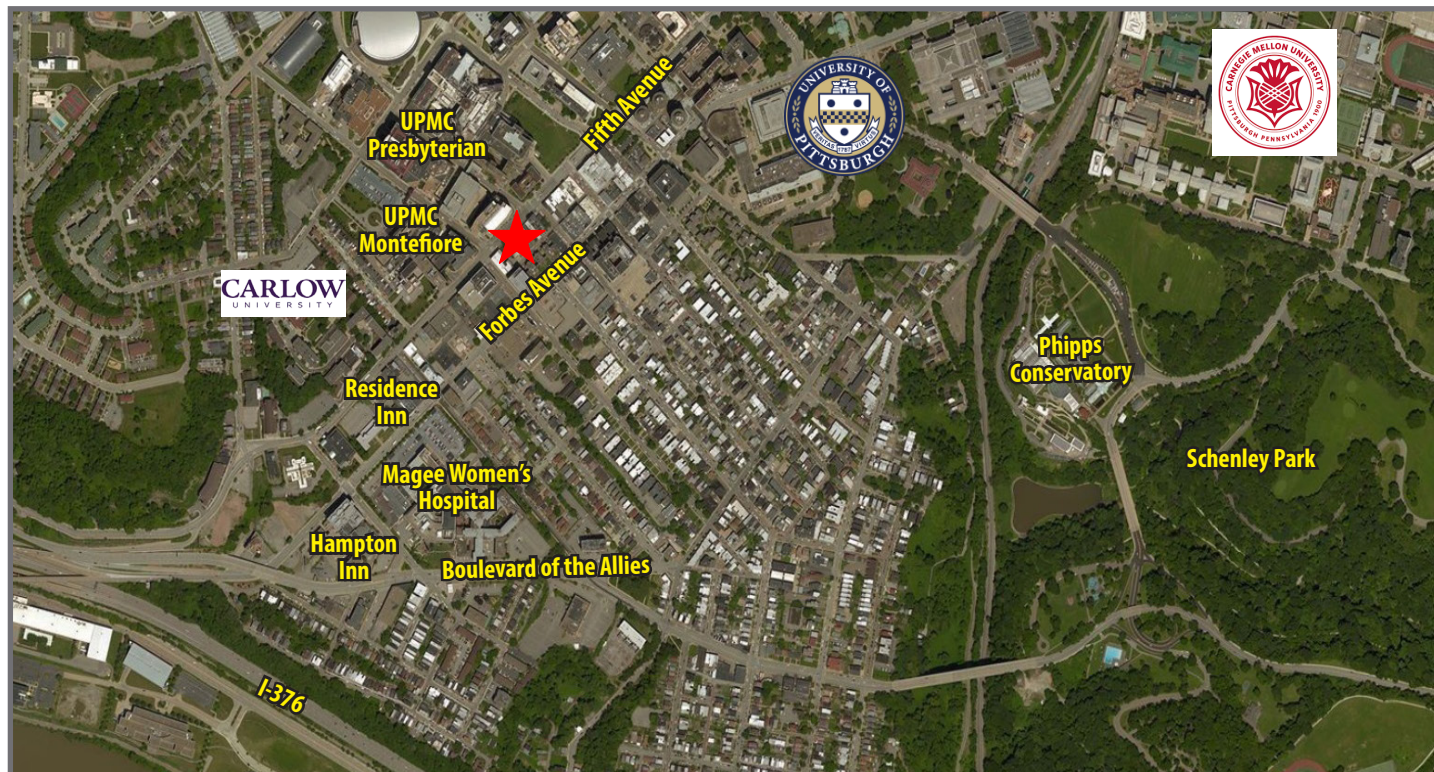




Modern Updated Lobby



Centrally Located in the Heart of Oakland



For more information please contact:

**Andrew Martz**  
Associate

Oxford Realty Services, Inc.  
412.261.0200, ext 3486

amartz@oxfordrealtyservices.com

**OXFORD**  
REALTY SERVICES, INC.

2545 Railroad Street  
Pittsburgh, PA 15222  
www.oxfordrealtyservices.com

Although all information furnished regarding property for sale, rental or financing is from sources deemed reliable, such information has not been verified, and no express representation is made nor is any to be implied as to the accuracy thereof, and it is submitted subject to errors, omissions, change of price, rental or other conditions, prior sale, lease or financing, or withdrawal without notice. Rental terms and all dimensions are approximate and specifications are subject to change without notice. Oxford Realty Services, Inc., an independent real estate services company.

**OXFORD**  
REALTY SERVICES, INC.

**FOR LEASE**

Real Estate Brokerage Services

Office | Industrial | Retail | Investing | Consulting

**3520 Fifth Avenue**  
Pittsburgh, PA 15213



Available **Premises**

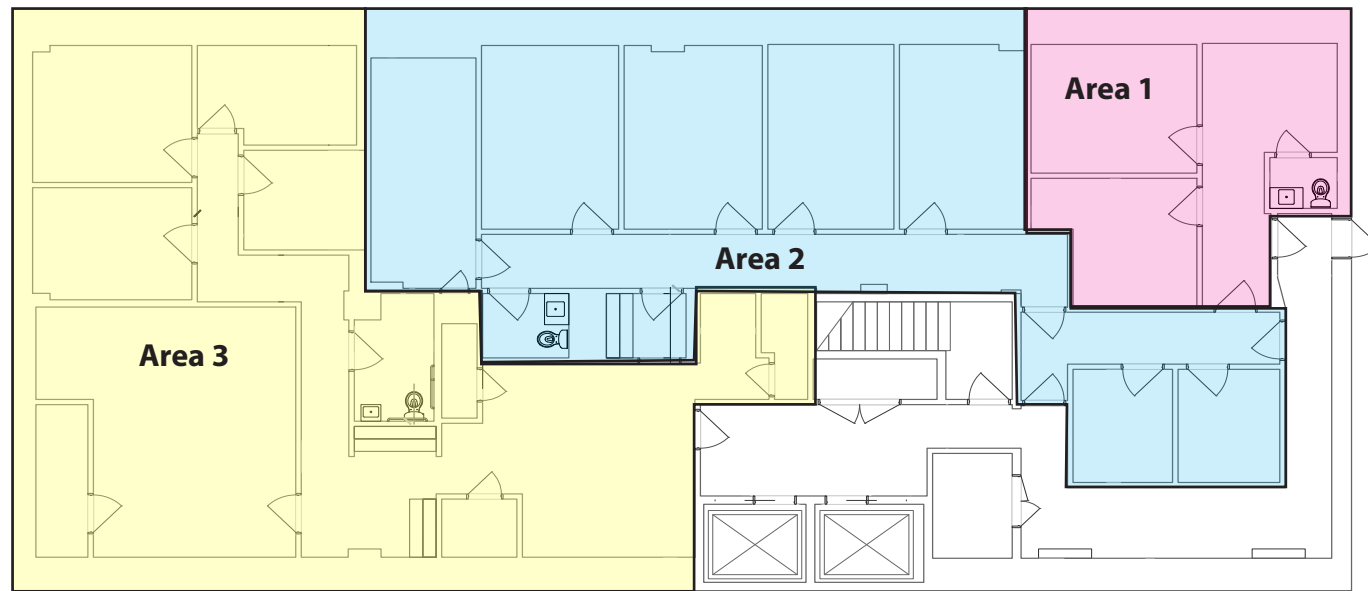
- 3,359 RSF - Ground Floor
- 2,200 RSF - Suite 205
- 1,472 RSF - Suite 220
- 5,334 RSF - Third Floor
- 2,145 RSF - Sixth/Seventh Floors

Property **Highlights**

- Located in the heart of Oakland's Business District along Fifth Avenue
- Abundance of amenities just steps away
- All suites have interior private restrooms
- Some on-site parking available
- Numerous garage parking options available within 1 block radius

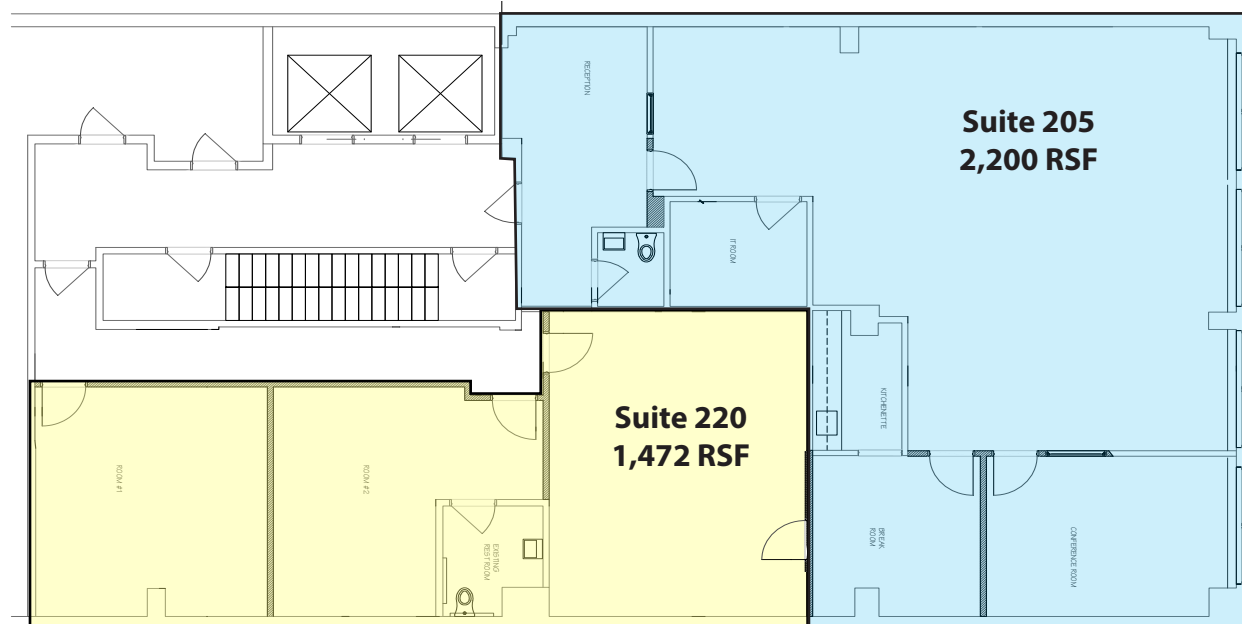


### Up to 3,359 RSF - Ground Floor



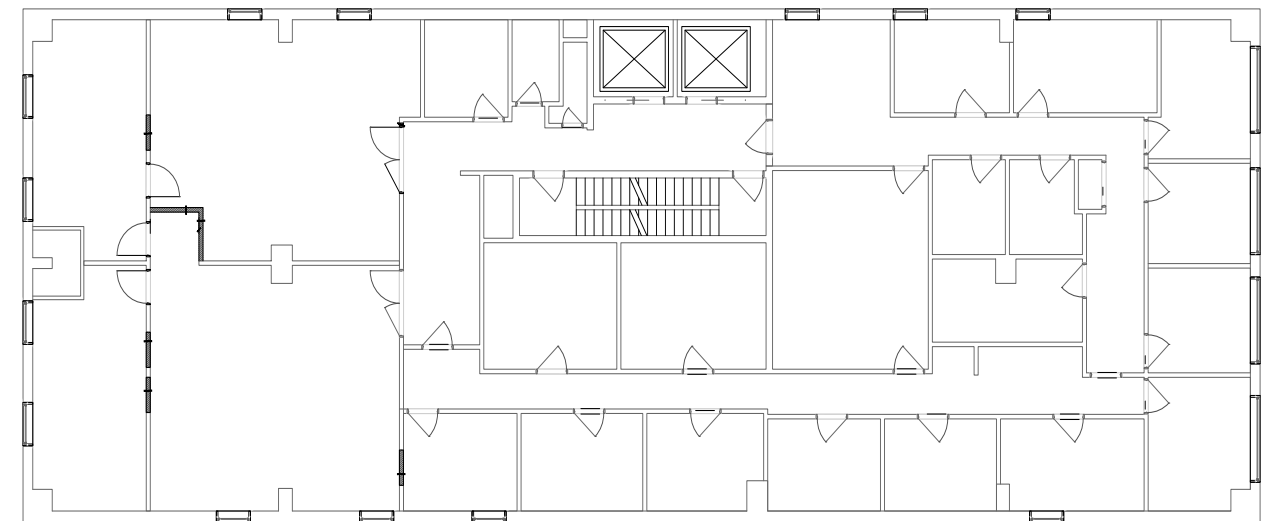
- Suite consists of 3 separate areas which can be assembled for a larger space
- Area 1 - 2 private offices / restroom
- Area 2 - 7 private offices / restroom / kitchen area
- Area 3 - Reception / 4 private offices / restroom / kitchen / conference room

### Up to 3,672 RSF - Second Floor



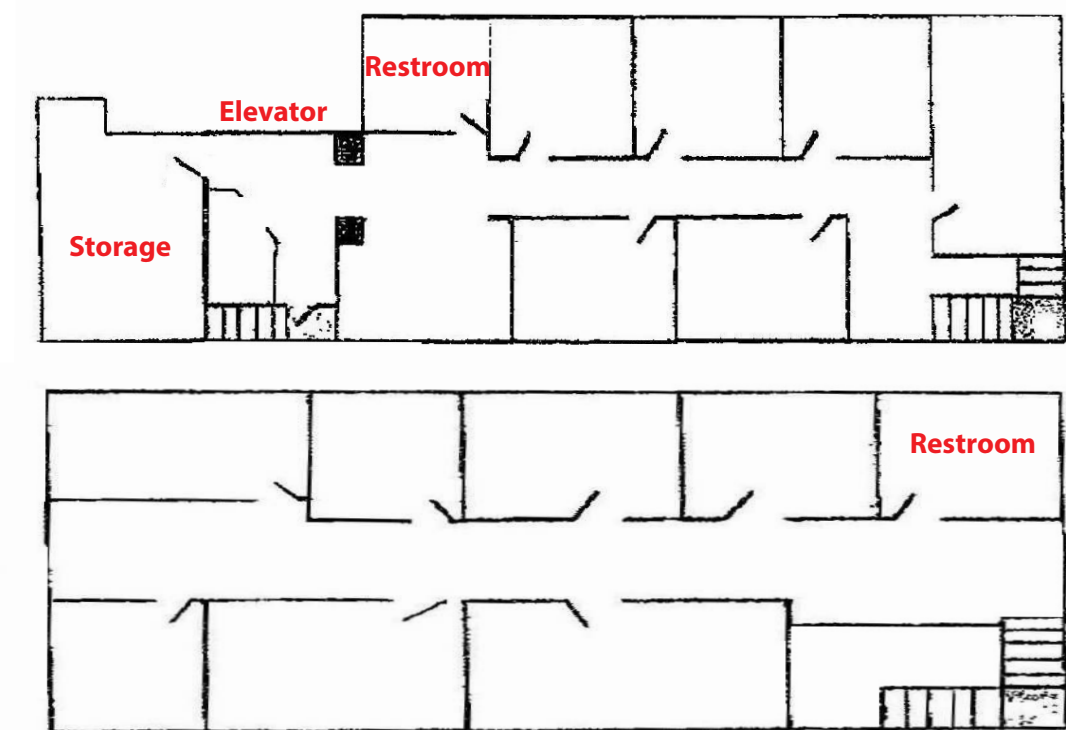
- Suites 205 and Suite 220 can be combined for a total of 3,672 SF or leased separately
- Suite 205 consists of a large open area, conference room and breakroom with kitchenette
- Suite 220 consists of a large conference room and two (2) smaller rooms
- Both suites have private interior restrooms

### Up to 5,334 RSF - Third Floor



- Suite consists of 17 private offices, a kitchen, work room, IT closet, 2 lab areas and a private restroom

### Up to 2,145 RSF - Sixth & Seventh Floors



- Each floor consists of a private restroom and is accessed via a connecting stair case
- 6th Floor consists of 6 private offices and a kitchen area
- 7th Floor consists of 7 private offices
- Suites contain an abundance of natural light